

'Art Rocks' deadline is Friday **PAGE 2**



MINDEN PRESS-HERALD

www.press-herald.com

May 28, 2015 | 50 Cents

THURSDAY

MINDEN CRIME

Minden man arrested on drug charges

MICHELLE BATES
michelle@press-herald.com

A trailer hitch blocking the expiration date on a license plate prompted a Minden police officer to initiate a traffic stop that ultimately led to the arrest of a Minden man.

Edward Pauley, 41, was

arrested Sunday, May 24, and charged with improper display, no driver's license, possession of drug paraphernalia, possession of Schedule II CDS (methamphetamine) with intent to distribute and three bench warrants for no driver's license, expired license plates and loud mufflers.

Police Chief Steve Cropper says Officer First Class Kenneth James conducted a traffic stop on Interstate 20 westbound for improper display. When he made



PAULEY

contact with Pauley, Pauley provided the proper paperwork with the exception of a driver's license.

"A warrant check was run on Mr. Pauley and headquarters advised he had three outstanding warrants through us," Cropper said. "He was initially arrested on those three bench warrants."

During an inventory search of the vehicle, according to reports, a small plastic bag containing suspected methamphetamines was discovered in a blue and black CD case. Several needles were in the same case, Cropper says. A large Ziploc bag

See **ARREST**, Page 2

INSIDE today



Second St. Jude slow pitch tourney set

SPORTS PG.6



Cemetery Association honors retiring member

LIFE PG.5



Tax wiggles for the ages

OPINION PG.4

WEATHER

TOMORROW'S OUTLOOK



89 HIGH **70 LOW**

Partly cloudy skies during the morning hours. Thunderstorms in the afternoon.

CONNECT WITH US

@mindenph

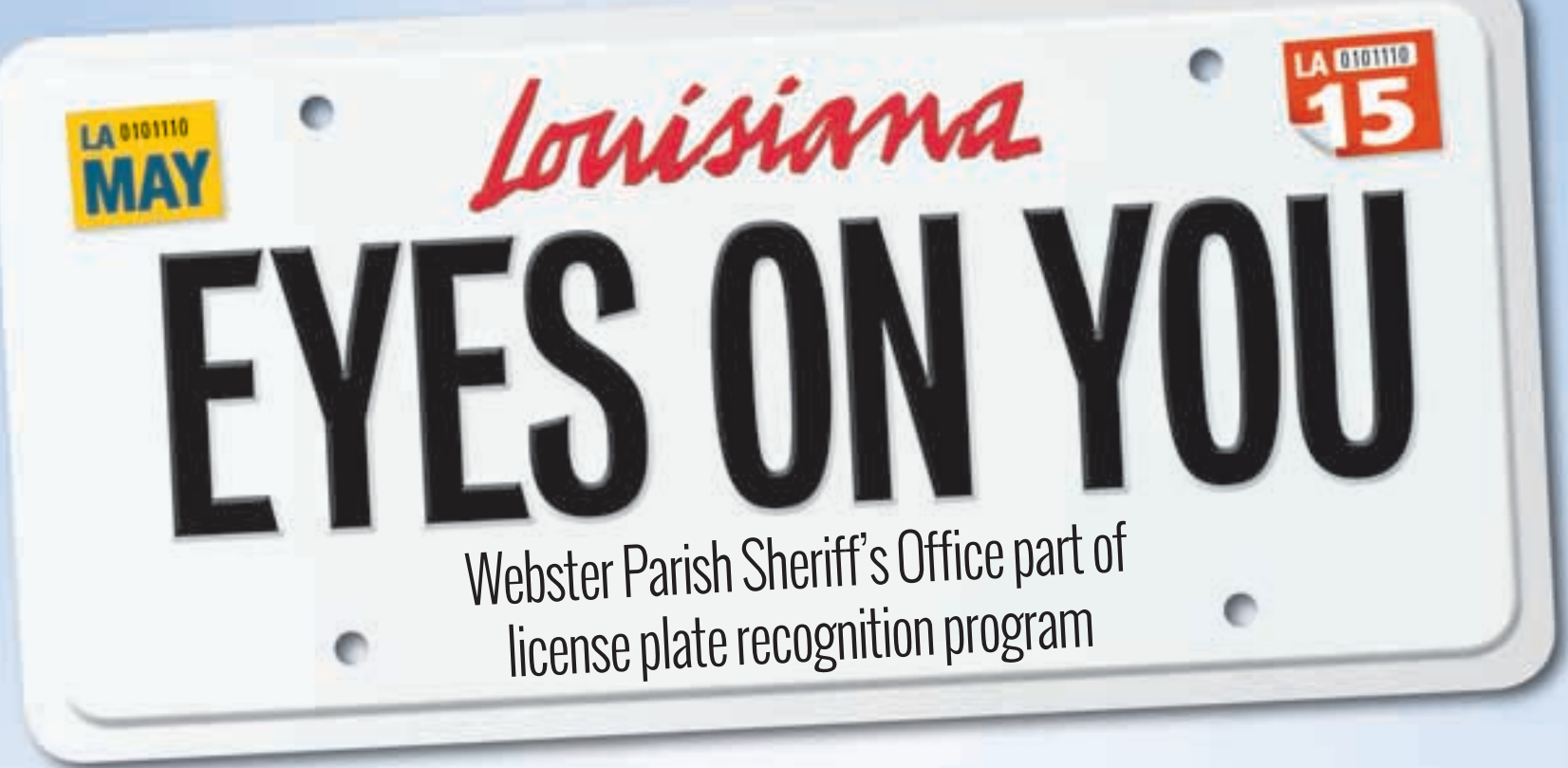


specht
NEWSPAPERS, INC.

Vol. 46 No. 234



LOUISIANA LEGISLATURE



Webster Parish Sheriff's Office part of license plate recognition program

MICHELLE BATES
michelle@press-herald.com

The Webster Parish Sheriff's Office is one of several participating in a program using the license plate recognition system to identify uninsured motorists and help stop vehicle theft.

Senate Bill No. 250, if passed into law, would create the Statewide Motor Vehicle Theft and Uninsured Motorists Identification Program.

This program would use the license plate recognition system to deter motor vehicle theft and in the identification of uninsured motorists, according to the bill's digest.

"There's two different types of cameras," Bossier/Webster District Attorney Schuyler Marvin said. "One can be mounted on the light bar of the car, about the size of a softball,

and it's a camera that only reads license plates. The general purpose of it is to find vehicles that don't have general liability insurance."

The other type of camera is a stationary one that can be set on a highway like Homer Road or Highway 531.

Sgt. Mike Vaitkus, in traffic safety with the Caddo Parish Sheriff's Office, says their department has been using the recognition system for years, and it has served to help stop vehicle theft, even putting away high profile suspects.

"It's recovered several stolen vehicles," he said. "It's recovered several high profile people wanted by the FBI and other various agencies. It's



MARVIN

See **CAMERAS**, Page 3



Shown is an example of one type of license plate recognition camera that is mounted to the roof of cruisers. Courtesy Photo

THE GIFT OF LIFE

LifeShare's 'Cuffs and Hoses' blood drive is Friday

MICHELLE BATES
michelle@press-herald.com

Local law enforcement and the Minden Fire Department are once again being challenged to give blood to those in need.

"Cuffs and Hoses," sponsored by the Webster

Parish Sheriff's Office in conjunction with LifeShare Blood Center, will host the blood drive from noon until 6 p.m., Friday, May 29, at the Minden Civic Center.

"This is kind of like a competition (among) the police, the fire department and the sheriff's (office)," Mary Jo Henderson, of

LifeShare Blood Centers, said. "Last year, the fire department donated more than the other two departments."

She says the Minden Fire Department donated some 42 units of blood to LifeShare. Fire Chief Kip Mourad says he and his family have always donated blood and it's important

to give.

"Anytime somebody needs it, not just for an emergency, there's always a shortage of it," he said. "It's great to have people get out and give blood. It's not like something you can just go out everyday and just buy. I've been giving blood my whole life; it's something that can't be manu-

factured, so it's hard to get."

Minden Police Chief Steve Cropper says his father gave blood on a regular basis, which inspired him to continue that tradition after his passing.

"My dad was a big believer in donating blood,

See **DRIVE**, Page 2

MBL Bank Your Town, Your Bank. Member FDIC LENDER

100 MBL Bank Drive • www.mblbank.com • 318-377-0523 • Saturday Drive-Thru Banking 9a.m - 1p.m.

SECONDFRONT

www.press-herald.com

ART IN MINDEN

Deadline for 'Art Rocks' is Friday

STAFF REPORTS

The deadline to sign up for the "Art Rocks" Minden City Art Works summer art camp is Friday.

The camp will be for children ages 7-16, and will be at 701 Main Street in downtown Minden.

The elementary division will be June 15-19 and will be divided into a morning and afternoon session. The morning session for children ages 7-9 will be from 10 a.m. until noon each morning. The afternoon session for children ages 10-12 will be from 2 until 4 p.m. each afternoon. Each student will complete a work of "rock art" to take home.

Local artists Larry Milford and Jeanne Mason will direct the senior high art camp June 22-26 from 5 until 7:30 p.m.

each evening. Again, each student will complete a work of "rock art" to take home.

Dress your children in clothing appropriate for painting and craftwork, i.e. an old t-shirt or shirt. Each child will need to bring a drink and snack each day.

There will be a \$10, nonrefundable supply fee for all students participating. There is limited enrollment on a first come, first serve basis.

Registration forms are available at Minden City Hall, 520 Broadway St., or City Art Works. Forms can also be printed online at www.mindenusa.com/mainstreet. The registration fee will increase to \$20 for late enrollees, provided space is available following the May 29 deadline.

ARREST

Continued from page 1

with suspected methamphetamine was found as well, he says.

"That's when he was charged with the possession with intent and the possession of drug paraphernalia," he said. "He

was cited for the improper display and no driver's license."

Cropper says they discovered 21 grams of methamphetamine with an approximate street value of \$2,100.

He was booked at the police station and transported to Bayou Dorcheat Correctional Center.



LifeShare representative Mary Jo Henderson shows off the shirt donors will receive after giving blood during the 'Cuffs and Hoses' blood drive Friday. Bruce Franklin/Press-Herald

DRIVE

Continued from page 1

and he received awards for donating so much blood," he said. "It does save lives. It saves more lives than anyone would ever dream. It's very simple, it's painless and for that little bit of time, people don't realize just how many lives they can save."

Even though it is a competition among the law enforcement and the fire department, Henderson encourages the public to be a part of it as well by coming out and donating. Minden has been one of LifeShare's biggest sup-

porters, and Henderson says she's proud of that.

"This is something that is very, very important, because the blood supply is way down," she said. "Minden does better than any place. It's the best to me. We're in need of all blood types, but O negative is the one that can be used universally."

For those who wish to donate, make sure to eat a good meal and increase fluid intake before donating. Also, be sure to know the names of all the medications you take.

Men must be at least 4 feet, 10 inches tall and weigh at least 111 pounds. Females must weigh at least 110 pounds and be

healthy.

Henderson says some people may be temporarily or permanently prevented from donating blood due to certain health conditions or certain medications. Diabetics may give blood, but those who are on blood thinners will need permission from their doctors before giving.

Anyone 16 or older, in good health who meets height, weight and donation eligibility requirements may give blood. All 16-year-olds must present signed permission from a parent or guardian at each blood donation.

A photo ID will be required.

Homer Police Department seeking reserve officers

The Homer Police Department is seeking individuals interested in applying to be a reserve officer. For more information and to obtain an application, contact Homer Police Department Officer Johnnie Hough, Police Chief Russell Mills by phone at 318-927-4001, email at homerpolice9@gmail.com or stop by the Homer Police Department at 400 East Main St. in Homer.

Court-Approved Supplemental Information About The Deepwater Horizon Economic Settlement Claim Deadline



June 8, 2015 – Deadline to File

Claim(s) with the Deepwater Horizon (BP) Economic Settlement Program

The Class Settlement and its objective, financial data based causation tests have been approved by final judgment.

If you reside or have a business in the map above, you have the right to file a claim.

If you submit a claim form and all required information and meet the formulas as approved by the Courts, you qualify for an award.

Not every claim filed will be eligible, but you have the right to file and find out.

The June 8, 2015 Deadline will NOT be extended

To file your claim go to:
www.deepwaterhorizoneconomicsettlement.com
 Or Call (866) 992-6174



EDUCATION IN WEBSTER

Committee formed in wake of Common Core compromise

MICHELLE BATES
michelle@press-herald.com

The Louisiana Department of Education is forming a review committee in the wake of a compromise agreement between both sides of the Common Core State Standards issue.

State Rep. Gene Reynolds says this is part of the compromise package that will take place during the 2015-16 school year where a panel of educators and other experts will look at the CCSS and perform a comprehensive review of them.

"This is one piece of the compromise," he said. "We have all these members and they're going to take the CCSS and go through

each and every one of them thoroughly. That group will report to BESE early next year. The results of that report will be reviewed by panels all over the state - open to the public."

During this period, parents and the general public will be able to express their opinions on the new proposed standards. Reynolds says the proposed standards will be a blend of the CCSS and standards proposed by the review committee.

"After those changes are made, when we go into session next year, those proposed standards will come to the legislature," he said, "and we can say yes we want these, or no we don't want these."

If the vote is an over-

whelming "no," Reynolds says a certain amount of time will be set aside to make the needed changes and get it ready to implement the following school year.

According to a news release by the DOE, 101 proposed members of four committees will review and develop learning expectations for students in English and mathematics. The proposed members include 58 school-based educators, 24 district leaders, five representatives from institutions of higher learning and 15 education and parental advocates.



REYNOLDS

"Two weeks ago, legislative leaders announced an agreement that would codify the process in law, requiring it to start July 2015 and be concluded by March 2016, at which time BESE will adopt the reviewed and developed standards," DOE officials stated.

The four committees will be one standards committee that will serve as a steering committee and oversee the work of the three content committees.

Webster Parish Superintendent of Schools Dr. Dan Rawls says this is a step in the right direction in allaying fears and frustrations by parents all over the state.

"It's finally getting the two sides together, and it

is a good thing," he said. "Both sides are finally going to reach across the aisle and we're going to sit down together and go through these GLE's and decide what's best for our kids. Somewhere in there, I think they will ultimately come up with a solution that will finally help kids."

However, he says his faculty still has some fears about testing now that the Partnership for Assessment for College and Careers, or PARCC, testing has been thrown out the window. Reynolds says a compromise test will take its place.

"The PARCC test is history, and everybody is in agreement with it," he said. "Just for this year, we will authorize a company to come up with a test that

only 49 percent of the questions can be national questions and the rest have to be Louisiana questions. That's just for this year."

In later years, if the standards need to change again, he says the state will go into contract with a company to design a test that meets those standards.

The fluidity of change is one of the better parts of the compromise package, Reynolds says.

"If the standards change again, this process can be used again to approve those standards," he said. "It gives everybody the opportunity for input on any standards that we put in place going forward from now on."

OBITUARIES

James Leon Hunter

A memorial service for James Leon Hunter will be Saturday, May 30, 2015, in Fort Towson, Oklahoma.

Leon Hunter was born May 2, 1941, in New Edinburg, Arkansas, to Omie Muckleroy and Ras Hunter. He left this world on May 25, 2015, in Plano, Texas.

Leon was raised in Minden. After serving in the U.S. Army, he lived and worked in the Mesquite and Dallas, Texas area until he retired. Then he moved to Fort Towson, Oklahoma and lived there for the rest of his life.

Leon was preceded in death by his parents, Ras and Omie Hunter and twin brothers Claude and Clyde Hunter.

Left to cherish his memory are his friend and companion, Freda Hambrick; twin sisters, Barbara Hughes of Benton and Charlotte Sandlin of Blanchard;

brothers, Gary Hunter and wife Billie of Homer, Orville Hunter and wife Trish of Dubberly; a very special sister-in-law, Joyce Hunter of Fort Towson, Oklahoma and a special nephew, Danny O'Brien and wife Roma of Krotz Springs.

He was well loved by his family and will be greatly missed.

Jim Ella Parker

Jim Ella Parker, 89, passed peacefully from this life at her residence in Minden on Monday, May 25, 2015. A funeral service will be at 3 p.m., Saturday, May 30, 2015 at Rose-Neath Funeral Home Chapel in Minden with visitation immediately before at 2 p.m. Officiating will be her nephew, Don DeLukie. Burial will follow at Gardens of Memory in Minden.

Born July 12, 1925, in Mt. Pleasant,

Texas, to Jim and Myrtle Thompson, she was the youngest of nine children. While still a young child, she moved with her family in 1930 to Minden. There she attended school, worked in her teen years as a drug store soda fountain attendant, and met the love of her life, Joe Parker.

Jimmie married Joe in 1945, began their family in Minden, then relocated with him to Shreveport in 1953 where they lived for over 55 years. A full-time mother and homemaker, she was also a faithful member of the Church of Christ with many friends at the Southern Avenue, Southern Hills and Sunset Acres congregations.

She treasured all living things, but pink roses and baby animals claimed a special place in her heart. One pastime she especially enjoyed was collecting toys and playthings in anticipation of her grandchildren's visits. Above all else, she loved reading the Word of God. Prayer was an important part of her life and she regularly prayed for her children, grandchildren,

and great-grandchildren by name.

Mrs. Parker was preceded in death by her husband of 65 years, Joe Wesley Parker; grandson Jarrod Parker; great grandson Elijah Toombs; brothers Cline, Cullon, and Corman Thompson; and sisters Reeta Basham, Rhoma Gray, Louise Smith, Janie Skinner and Edith DeLukie.

She is survived by daughter Linda Jordan and husband Lon of Mesquite, Texas; son David Parker and wife Ellen of Minden; grandchildren Amy Jordan Toombs and Jason of Largo, Florida, Angela Jordan Martinez and Mark of Forney, Texas, Rachael Parker Haddad and Nathan of Shreveport, Mark Jordan and Lacey of Watauga, Texas, and Slaid Parker of Shreveport, and nine great-grandchildren.

The family expresses special appreciation to caregivers Sue Penton and Lacy Green for their patient, compassionate and dependable assistance. They also thank the staff of Gamble Hospice, especially Lauren Taylor and Carolyn Robertson, for their gentle and thoughtful care.

information Center, or NCIC. "As soon as it captures that plate, before anyone can type the first few numbers of a license plate, it will automatically check it, and it will pop up if there's an alert," he said.

That doesn't mean there's no back up. Vaitkus says if an alert does pop up on the system, the officer or deputy still has to check with dispatch and run the plate to make sure the information is accurate, because the system does not recognize states, only plate numbers. A motorist may have the same license plate number as someone else, but it could be from two different states.

"You might get a hit confirmation on a license plate, but that license plate might be out of Georgia and not Louisiana," he said. "You have to pay attention and we have checks and balances in place to make sure no one is pulled over wrongfully."

Marvin says Webster Parish Sheriff Gary Sexton is excited about the prospect of getting the cameras, as it is another tool in helping law enforcement in their quest to find uninsured motorists. He made it clear the burden of having liability insurance would lie with the owner of the vehicle and not the driver, saying 22 percent of motorists in Louisiana do not carry general liability insurance.

He says his office and the sheriff's office has entered into an agreement with a private company to maintain the cameras, and 30 percent of the fine from the ticket would go to this company. It won't cost the sheriff's office or the DA's office a dime, he says.

"We don't have any liability for the cameras, maintenance or anything," Marvin said. "The public safety part of it is huge."

He recalled the burglary

at Harper Motors where all the vehicles were jacked up and all the tires were stolen. He says those are the kinds of crimes having the recognition system would solve. Had they had the cameras, he says, they would have been able to

identify the perpetrators much sooner.

"We want to get it started as soon as possible," he said.

If passed into law, then he hopes to have the program put in place by the first of the year.

CAMERAS

Continued from page 1

alerted on people on the terrorist watch lists. It's done its job."

Marvin says this will be effective for Bossier and Webster parishes as well.

"If a car that (a deputy) passed has an Amber Alert on it or a Be On The Look-out, or wanted in an armed robbery, it immediately notifies him on his laptop," he said. "He's able to turn around and conduct a traffic stop after he has proper backup. That's what we like about it."

Vaitkus explained the cameras work on reflectivity and come equipped with infrared technology. The infrared lights "see" the license plates and the camera snaps a picture. As soon as the photo is taken, it quickly cross-references the plate with a database in the National Crime Infor-

UNABLE TO WORK? • DENIED BENEFITS? • WE CAN HELP!
SOCIAL SECURITY DISABILITY LAW

- Win...No Award / No Fee
- Applications/Hearings/Appeals
- Immediate Access to Experienced Personnel
- We Strive For Quick Claim Approval
- Free Consultation

CALL TODAY FOR IMMEDIATE HELP!
(800) 478-9053

Bill Gordon & Associates is a nationwide practice limited to representing clients before the Social Security Administration. Bill Gordon is a member of the Texas & New Mexico Bar Associations. The attorneys at Bill Gordon & Associates work for quick approval of every case. Results in your case will depend on the unique facts and circumstances of your claim.

BIRTHDAYS FOR THURSDAY, MAY 28, 2015

Bobby Ray Lewis Jr.
Ella May Cole
A'Miracle Wesley
Jep Robertson
Gladys Knight
Jake Johnson
Carey Mulligan

HAPPY BIRTHDAY

f
/mindenph
For News Updates
Like Us!

SCAN WITH QR CODE SCANNER
TO LIKE

BUY ONE GET ONE FREE

2 Gallon Texas Star Hardy Hibiscus \$7.95 | 1 Gallon Angel Trumpet (Pink, Yellow, White) \$3.95

USE NOW!!!

ferti-lome

Ferti-lome Insecticide Fungicide • Mitiside • 1 quart | Ferti-lome Rose & Flower Food Systemic

Boston Fern 10" Small - \$11.99

multi-colored BRAIDED HIBISCUS

Garden Fertilizers 50#
8-8-8 • 13-13-13
8-24-24 • 33-0-0
10-20-10 • 17-17-17

Hi-Yield Kill A Bug Granules - 10 lb Bag

Bulk - Fresh Garden Seeds & Potatoes
Truckload Sale - Potting Soils, Mulches & Bulk Landscape Mix

Cone's We recommend Ferti-lome Products
Farm & Garden Mart 377-6235
221 E. Union • Minden

Senior Friends Bingo

Tuesday, June 9th at 3-4pm
Minden Medical Center Cafeteria

You must show your Senior Friends member card to attend. If you are not a Minden Medical Center Senior Friends member please come early if you would like to sign up.

BINGO For ages 65 and older.

Please R.S.V.P at 318-377-4663

MINDEN MEDICAL CENTER
Excellence in healthcare...close to home.

OPINION

www.press-herald.com

PERSPECTIVE

Tax wiggle for the ages

The Louisiana Senate began deliberations Monday on the \$24-billion state budget.

The spending plan for the 2015-2016 fiscal year sailed out of the House of Representatives late last week amid little fanfare. The new fiscal year begins July 1.

Lawmakers have until 6 p.m. on June 11 to get things right, or return for a special session in the worst of years to have one — an election year.

In the mix to help neutralize a \$1.6-billion revenue shortfall are some \$600-plus million in new taxes courtesy of the House of Representatives, which is fitting since all revenue measures must originate in the House. At least that's what the state Constitution tells us. For now anyway.

Included among the tax increases are a modest spike in the cigarette tax and 10 other measures that tinker with various tax breaks for the business community. The giveaways for the motion picture and solar industries are impacted, too, though far too lightly. Those folks should remind you of career bureaucrats, meaning you can never fill them up.

Though the House signed off on the tax hikes as if members were handing out Christmas presents, the state budget arrived in the Senate some \$155 million shy of being balanced. That's pocket change, especially with Senate President John Alario piloting the ship. If anyone can find a couple of hundred million dollars to shore up the budget, Alario can — with his eyes closed.

Still, the budget must be balanced thanks to that pesky provision in the state Constitution. To you fans of big government, that means the state can't follow the federal government's lead and engage in deficit spending, or just borrow money from the Chinese to make ends meet. Instead, in Louisiana we are expected to pay as we go, or at least give the impression we're paying our bills in a timely fashion.

After all, what the people don't know won't necessarily hurt them.

All along throughout this fiscal-only session of the Legislature as well as in the weeks leading up to the session, we were led to believe Gov. Bobby Jindal would never sign off on a budget that was balanced by any net increases in taxes. Apparently Jindal got his cue from Grover Norquist, better known as "the" anti-tax crusader in America.

Norquist, by the way, operates an outfit called Americans for Tax Reform. It's based in Washington, D.C., which, by my count, is a long way from the Capitol in Baton Rouge.

That's neither here nor there, though.

Besides, there's been a change in plans, or a change in how this year's budget is expected to spare higher education from deep cuts in state funding while keeping Norquist and his ilk happy.

That change surfaced Monday when Tim Barfield, secretary at the state Department of Revenue, said, in so many words, that the net increase in taxes wiggle would be figured over a five-year period. "It's OK to have some things front-loaded," Barfield said.

Which is just peachy since every tax hike the House passed, except the cigarette tax, expires in no less than 18 months after they're initially levied. In other words, the Legislature can pass these new taxes and Jindal can go along with them and two important goals will have been achieved: The "fiscal crisis" is abated and Jindal gets a passing grade in the eyes of Norquist.

But, my fellow Louisianians, the "fiscal crisis" is going nowhere. It's simply going into hibernation for a spell so lawmakers can run for re-election and Jindal can run for president.

So, in other words, there was no fiscal crisis. It's a political crisis. It always is.

Sam Hanna Jr. is publisher of *The Ouachita Citizen*, and he serves in an editorial/management capacity with *The Concordia Sentinel* and *The Franklin Sun*, three newspapers owned and operated by the Hanna family. He can be reached by call 318-805-8158 or emailing him at samhannajr@samhannajr.com.



SAM HANNA JR.

MINDEN PRESS-HERALD

203 GLEASON STREET, MINDEN, LOUISIANA 71055
318-377-1866 • www.press-herald.com

USPS NUMBER 593-340

DAVID A. SPECHT JR., *President*

GREGG PARKS, *Publisher*
gparks@press-herald.com

CAROL ANDREWS, *Chief Financial Officer*
carol@press-herald.com

BRUCE FRANKLIN, *Managing Editor*
bruce@press-herald.com

BLAKE BRANCH, *Sports*
blake@press-herald.com

JORDAN WILSON, *Community Editor*
community@press-herald.com

TELINA WORLEY, *Advertising Manager*
advertising@press-herald.com

PETE COVINGTON, *Circulation Manager*
circulation@press-herald.com

DENNIS PHILBAR, *Production Director*
production@press-herald.com

The Minden Press-Herald is published Monday through Friday afternoon by Specht Newspapers, Inc. at 203 Gleason Street, Minden, Louisiana 71055. Telephone 377-1866. Entered as Periodicals at the Post Office as Minden Press-Herald, P.O. Box 1339, Minden LA 71058-1339. Subscription rate: In-parish home delivery \$11 per month; \$33 per three months; \$66 per six months; \$99 per nine months and \$132 per year. Out-of-parish mail delivery is \$14.50 per month; \$43.50 per three months; \$87 per six months; \$130.50 per nine months and \$174 per year. POSTMASTER: Send address changes to Minden Press-Herald, P.O. Box 1339, Minden, LA 71058-1339.

PERSPECTIVE

A letter carrier's special delivery

Neither rain nor sleet nor snow — nor even the likelihood that he'd be killed en route — could stop this letter carrier from making his appointed rounds.

Doug Hughes is one gutsy and creative mailman. In April, this rural letter carrier from Florida stunned the Secret Service, eluded federal aviation authorities, embarrassed Washington's haughty all-seeing security hierarchy and threw members of Congress into a chaotic panic. Hughes did all this by boldly flying his tiny, homemade, gyrocopter right through the heart of our nation's most restricted airspace, then landing it on the front lawn of the U.S. Capitol.

Far from a terrorist or a kook, Hughes was just a mailman on a mission, a patriotic citizen who — like most of us — is disgusted that Big Money interests are able to openly buy lawmakers and laws. But he did more than write a letter to his congress critter — he wrote letters to all 535 of them, loaded the missives in his mailbag and — as postal workers do — literally went the extra mile to make a "very special delivery" in his gyrocopter.

This was no flight of fancy. Doug planned his mail delivery for months, and he was fully aware that he might crash, be killed by a scramble of military jets or be gunned down by guards when he landed. Nor was it a sneak attack — he repeatedly posted his intentions in blogs; a reporter was covering his preparations; and the Secret Service had investigated and interviewed him about his plans more than a year earlier.

His landing jolted the Capitol into lockdown. Guards rushed out to arrest Doug and haul him off to some deep cellblock; a bomb squad arrived; and spooked lawmakers were scared silly. They ran around screeching that they were threatened by terrorists. Of course, the real threat to America is not some guy flying a gyrocopter in protest but the utter corruption of Congress, the courts and democracy itself by the plutocratic elites whom this mailman targeted with nothing more (nor less) dangerous than a bagful of truth-telling letters.

Actually, Hughes was not alone on this heroic mission of civil disobedience — the great majority of Americans are totally on board with him, his message and his bold effort to shake up and shape up Congress.

It's not surprising that when the activist mailman delivered his powerful message to Congress he drew saturation coverage from the mass media.

Not coverage of his message, mind you, but a ridiculous spasm of media scaremongering over the non-existent terrorist threat that our self-absorbed members of Congress say his visit posed to them.

While Hughes carried no weapons of terrorism on his flight, the message he brought to Washington is politically explosive. So, congressional leaders, who're always terrified about anything that might ignite public outrage over their pay-to-play corruption, quickly rushed to divert attention from the message — to the messenger.

Shazam! In an instant, the politicos fabricated a sob story about themselves, recasting their role from for-sale villains to pitiable victims. We're threatened by a security network so porous, they squealed, that this dangerous terrorist can easily fly right up to the Capitol building. They convened emergency hearings, went on talk shows and imperiously demanded that they be made safe from such a horrific threat. And the media meekly bought into the whole hubbub, entirely losing sight of the damning message that the mailman was carrying.

Hughes did not commit and act of terror; it was an act of civil disobedience. His flight was a thoughtful, well-planned, non-violent stand against the tyranny of money, undertaken in the spirit of Henry David Thoreau and Martin Luther King, Jr. Hughes is standing up for We the People, and like freedom fighters before him, he's full-aware of and prepared to pay the price of civic defiance. On May 20, a federal grand jury indicted this messenger of democracy on a mess of charges that could add up to more than nine years in prison. Far from backing away, however, he's now calling out you and me: "We spend billions protecting the United States from terrorists," Hughes recently wrote. "It's time for Americans to spend time protecting democracy from plutocrats."



JIM HIGHTOWER

Malignant



EDITORIAL ROUND UP

Times-Picayune, on discrimination not being tolerable in New Orleans

Mayor Mitch Landrieu issued an executive order Thursday (May 21) to make clear that discrimination of any sort isn't tolerated in New Orleans. In a city famously tolerant and welcoming that should be obvious.

But the mayor is rightly concerned that Gov. Bobby Jindal, who is consumed by presidential ambitions, has sent the opposite message to the world with an executive order of his own.

The governor signed the "Marriage and Conscience Order" Tuesday (May 19) after a House committee effectively killed legislation to protect businesses opposed to same-sex marriage from losing state licenses, tax benefits or other sanctions.

The governor's order captures the essence of House Bill 707 but is more limited in scope because he only has authority over executive branch agencies. There may be little practical impact even on them since the order cannot create new law.

But Mayor Landrieu is right to worry that New Orleans, with an economy heavily reliant on conventions and tourism, could be harmed by the negative message the governor's order sends to gay couples.

Already some New York legislators have called on their governor to restrict travel to Louisiana because of Gov. Jindal's order.

"With this executive order, I am issuing a clarifying call to the nation that New Orleans is an accepting, inviting city that thrives on its diversity and welcomes people from all walks of life with open arms," Mayor Landrieu said in a written statement. "In New Orleans, we believe religious liberty and freedoms should be protected and discrimination prohibited, and we have passed our own laws to reflect that principle."

Religious freedom is a dearly held right in this nation — protected by the Constitution, the federal Religious Freedom Restoration Act passed during the Clinton administration and a

similar state law passed in 2010. But gay rights advocates and some legal experts argued that HB 707 could have sanctioned discrimination against same-sex couples if their marriages become legal in Louisiana.

Rep. Mike Johnson, the Bossier City Republican who introduced the bill, said the possibility that the U.S. Supreme Court would legalize gay marriage in part prompted the legislation. He amended the bill to say that no discrimination would be allowed.

But that didn't persuade the members of the House Civil Law and Procedure Committee, which voted 10-2 to shelve the bill. The 10 votes included four Republicans. Only Rep. Johnson, who is on the committee, and Chalmette Republican Rep. Ray Garofalo voted to keep the bill alive.

That should have settled the matter. But Gov. Jindal couldn't pass up an opportunity to try to burnish his conservative credentials nationally.

Sadly, his ambitions could prove costly for Louisiana.

Michael Hecht, CEO of Greater New Orleans Inc., told the House committee that Louisiana's recent economic gains could be undone if the state is perceived as discriminatory. "We're beginning to convince the world Louisiana is a great place to business," he said. But the positive perception is "fragile."

New Orleans Convention and Visitors Bureau CEO Stephen Perry, who was a top aide for Republican Gov. Mike Foster, said the state could lose millions of dollars in tax revenue because businesses or events go elsewhere. That could include the loss of Super Bowls, Final Four tournaments and national championships for New Orleans, he said. The Jefferson Chamber of Commerce said Friday (May 22) that the governor's executive order will be destructive.

It isn't only tourism and economic development officials who are worried about the

repercussions if Louisiana is seen as being hostile to gay people.

Earl Shipp, vice president of Dow Gulf Coast operations, issued a written statement Tuesday opposing Rep. Johnson's legislation.

"Dow opposes House Bill 707 and any similar efforts to hinder our ability to recruit talent to our growing Louisiana operations. We call upon our legislative leaders to focus on making our state more competitive and economically sound instead of taking actions that divide us as citizens," he said.

"Inclusion of our LGBT colleagues is a matter of fairness and equality. It is also a business imperative. And as we expand our operations throughout the Gulf Coast region, creating thousands of jobs, we urge the Legislature to help us foster that same sense of fairness and inclusion," he said in the statement.

Dow, which employs more than 6,000 people in Louisiana, was the second major corporation to oppose the proposed marriage conscience act. IBM had earlier stated its opposition.

Yet the governor has put those businesses, Mayor Landrieu and many others in the difficult position of having to argue that — appearances to the contrary — Louisiana isn't hostile to gay people.

Mayor Landrieu's executive order — not the governor's — expresses who we are.

The mayor says: The City of New Orleans is proud to be a culturally rich community of faith, inclusion, tolerance and diversity. A place that values freedom of religious expression and freedom against discrimination.

Gov. Jindal's executive order can be revoked by the next governor in January, and we hope that happens.

Until then, we should all work to make sure Mayor Landrieu's message of tolerance and inclusion is the one that is heard.

WEBSTERLIFE

facebook.com/mindenph

Around Town

Share your events with the community. Send your events to community@press-herald.com, fax them to 377-1866, over the phone by calling 377-1866 or in person at our offices located at 203 Gleason St. in Minden.

Thursday, May 28

First Impressions Child Care and Pre-School will have its graduation ceremony at the Minden Community House at 7 p.m.

The Minden/Webster Parish Branch of the NAACP will have its monthly meeting at 6:30 p.m. at the 14th District Building. For more information, contact President Minister Kenneth Wallace at 371-4436.

Friday, May 29

Y-Line's 3rd Annual Reunion will be at 6 p.m. at Dorcheat Seafood Frill (Bayou Inn) in Dixie Inn. For more information call Fannie Ashley at 318-564-6688 or Bettye Herring at 318-578-4757.

Sunday, May 31

Mt. Nebo Missionary Baptist Church of Dubberly will have its Pastor's Aid Program at 3 p.m. Featured guest will be Sister Angela Wills and Sister Therah Newman.

St. Rest Baptist Church will host its 150th Great Family Gathering with special guest Psalmist Geoffrey Golden at 10:45 a.m.

King Solomon MBS will have its Pastor Aid "Helping the Help" program at 3 p.m. Featured guest will be Min. Jay Williamson of Showers of Blessing Ministries.

Mt. Zion CME Temple will honor Elder Arnold B. Caesar and first lady Daisey Caesar at 3 p.m.

The Pastor Aide Auxiliary of Union Grove Baptist Church cordially invite you to come worship and get your praise on at the Minister Solo Singing Program (featuring Pastors / Ministers/ Evangelists from the surrounding area) at 6 p.m. Special guest will be Interfaith Voices of Deliverance from Arcadia.

Antioch Baptist Church located on Hwy 79 in Minden will host its Fellowship Program at 2:20 p.m. with guest speaker Pastor Ray D. Jiles of Valley Springs Baptist Church.

Tillman Church of God in Christ located at 972 Tillman Church Road in Heflin will have a free hot dog give away from 11 a.m. until 1 p.m. or until all gone. For information call Roy at 377-3205.



Sheppard Street Cemetery Association honors retiring member

An Appreciation Reception was given by the board members of Sheppard Street Cemetery Association honoring the retirement of Henry "Buck" Mack on May 25, 2015, at St. Rest Baptist Church. Mack served the Association for the last 16 years as the manager of the Cemetery and Chairman of the Board.

Family and friends joined in the celebration to thank Mack for his dedicated service to this voluntary position.

Mack says that he was privileged to

work along with Mr. Wm. Owens, E. L. Heard, P. V. Harris, Leroy Williams, Kelvin Jones, Mrs. Ollie Diggins, M. G. Thompson, and Bessie Johnson. All of these people helped him prepare to do the work that he did for 16 years.

Mack passes the torch to Larry Gipson who enthusiastically assumes the duties of chairman of the board. Mr. Gipson may be contacted at (318) 377-0907.

The Sheppard Street Cemetery Association wishes Mack a wonderful and fun-filled retirement.

UCAP needs:

Food
Canned chicken and dumplings

Household Items
Plates, pots and pans, silverware

Clothing
Boy's clothes - size 2
Men's work boots - all sizes
Men's pants and shorts - size 32 and 34 waist
Donations may be made at 204 Miller St. between 10 a.m. and 3 p.m. Monday, Wednesday and Friday or call 377-6804.

Celebrate your wedding, engagement, or anniversary with Webster Parish!

Send an email to community@press-herald.com to find out how!

HOL-MONT

Sales & Rental

YOUR OUTDOOR POWER EQUIPMENT HEADQUARTERS

1040 HWY. 531 • MINDEN, LA • (318) 371-0550

THE DEFINITION OF VALUE.



For more than three decades, Exmark® has raised the bar on durability, technological innovations, fuel efficiency, environmental friendliness, comfort and ergonomics. All aimed at helping you save time and money. *That's why landscape professionals purchased Exmark 2 to 1 over the next best-selling brand of mowing equipment.*

exmark.com

LAZER Z® E-SERIES RIDERS AS LOW AS

\$162 PER MO.

3.99% Monthly Interest for 60 months* based on LZE600GKA4B4A2

0% monthly interest for 42 MONTHS*

On all mowers. Limited time offer. See dealer for complete details.

Hol-Mont Sales & Rental

1040 Highway 531, Minden, LA 71055
(318) 371-0550
holmont@bellsouth.net

GIVE US A CALL OR STOP BY
MONDAY-FRIDAY: 8:00-5:00
SATURDAY: 8:00-12:00

HOME OF THE BRAVE

HONORING OUR VETERANS

DEADLINES - THURSDAY, JUNE 25, 2015

PUBLISHES TUESDAY, JUNE 30, 2015

*3.99% Monthly Interest for 60 Months. Financing Program offered by Spectra Financial. On qualified purchases of \$1000 or more with your Spectra credit card. A \$200 Pre-approval Fee will be charged. 60 Equal Monthly Payments Required. 2% Monthly Interest for 42 Months. Financing Program offered by Spectra Financial. On qualified purchases of \$1000 or more with your Spectra credit card. A \$200 Pre-approval Fee will be charged. 42 Equal Monthly Payments Required.

SPORTS

www.press-herald.com

SPORTS briefs

LHSAA

First female football coach hired in Louisiana

Being the first female head football coach at a Louisiana high school might be enough to impress some people.

Susan Gremillion has her sights set on higher goals.

"First woman to be a head football coach sounds nice," Gremillion said. "I'd rather be the first woman to coach a deaf national championship team. Or maybe in a couple of years, an eight-man state champion in the LHSAA."

"In my mind we were two tackles and one touchdown away from the deaf national championship. The goal now is to find ways to get this team to achieve those goals."

Gremillion is the new head football coach at Louisiana School for the Deaf, succeeding her husband, Darren, who will remain as an assistant football coach and head powerlifting coach while tackling assistant principal for discipline duties. Darren Gremillion was LSD's head football coach for 15 seasons.

NFL

Ray McDonald arrested again

CHICAGO -- Police in California arrested former Chicago Bears defensive end Ray McDonald at 5:35 p.m. local time Wednesday for violating a restraining order, the Santa Clara Police Department said.

It marked McDonald's second arrest in less than 72 hours. On Monday, authorities booked McDonald on suspicion of domestic violence and child endangerment as a result of an early-morning altercation with his former fiancée, who also is the mother of his child.

Several hours after the alleged incident, the police located McDonald at the home of former teammate Justin Smith, where they placed the veteran defender under arrest.

The restraining order McDonald is accused of violating Wednesday was issued as a result of Monday's case.

He posted \$5,000 bail and was released from custody late Wednesday night, according to multiple media reports.

According to the Santa Clara Police Department, detectives learned around 2:52 p.m. that McDonald had violated the restraining order by being at a Santa Clara residence.

They later found McDonald at a local restaurant, where he was arrested without incident.

McDonald's attorney, Steve Defilippis, told ESPN's Josina Anderson on Wednesday night that McDonald was never served with a restraining order, although he was told to stay away from his former fiancée.

NBA PLAYOFFS

FEELING GOLDEN

OAKLAND, Calif. (AP) — After a generation of wishing and waiting, the Golden State Warriors have finally arrived on basketball's biggest stage again.

Stephen Curry had 26 points and eight rebounds, Harrison Barnes added 24 points and the Warriors advanced to the NBA Finals for the first time in 40 years with a 104-90 victory over the Houston Rockets on Wednesday night.

"Why not us?" Curry said to a roaring, golden-yellow shirt wearing crowd after the Warriors received the Western Conference trophy from Alvin Attles, the coach of their last championship team in 1975.

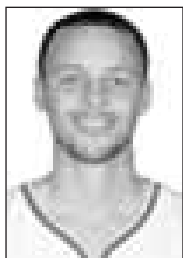
"The Bay Area's been waiting for 40 years," Curry said later. "I think it's time."

The Warriors shook off a slow start and sweated out a shaky finish in Game 5 to close out the Rockets and set up a matchup with LeBron James and the Cleveland Cavaliers beginning June 4.

It was hardly the prettiest performance — but one they'll savor nonetheless.

Yellow streams and confetti fell from the rafters when the final buzzer sounded. The Warriors shared hugs and handshakes, and the crowd chanted "M-V-P!" for Curry.

He relished the moment on the court with his 2-year-old daughter, Riley, who joined him in his postgame news conference — laughing, playfully interrupting him and walking around the room again.



CURRY



"I think she's taking advantage of the moment for sure," Curry quipped.

Dwight Howard led Houston with 18 points and 16 rebounds. But MVP runner-up James Harden had a forgettable finale, with a playoff-record 13 turnovers and 14 points on 2-of-11 shooting.

"Tried to do a little bit too much and turned the ball over and gave them easy baskets in transition," Harden said. "This isn't where we wanted to end at. It's a really good season for us. Next year we want to be better, and we will."

It was a tough way for the Rockets' run to end. They overcame a knee injury that sidelined Howard half the season to finish second in the West, played without starters Patrick Beverley and

Donatas Motiejunas in the playoffs and rallied from a 3-1 deficit to beat the Los Angeles Clippers in the second round.

The Warriors were one obstacle Houston couldn't clear.

"The guys fought hard," Rockets coach Kevin McHale said. "One thing about the team is that they were battlers, and a lot of guys in that room you feel pretty comfortable going to war with."

Curry said he had no lingering effects from his frightening fall in Game 4 that left him with a bruised head and right side. The MVP wore a protective yellow sleeve on his right arm, which he shed in the third quarter after shooting 4 for 12 and the Warriors clinging to a 52-46 halftime lead.

Things got tougher on Curry and the Warriors when backcourt mate Klay Thompson faked a shot that drew Trevor Ariza in the air early in the fourth quarter. Thompson absorbed Ariza's knee to the side of his head, sending him to the floor.

Thompson, who finished with 20 points, lay on the ground for a minute before walking to the locker room. He came back to the bench after receiving stitches on his right ear.

The Warriors initially said Thompson could've returned after passing a concussion test. The team said he began not feeling well after the game and started to show concussion-like symptoms. He will continue to be evaluated.

The Warriors did just fine without him, starting the

fourth on a 13-4 run and holding off Houston's last-ditch efforts on free throws.

Barnes highlighted the decisive spurt with a dunk that gave Golden State an 87-72 lead with 7:10 remaining. He flexed his muscles to the sellout crowd of 19,596, which spent the final quarter on its feet in anticipation of a long-awaited celebration.

Now it's LeBron vs. Curry.

King James vs. the Baby-Faced Assassin.

The four-time NBA MVP vs. the newly crowned MVP.

The hype has already started for two of the most popular and entertaining players in the world to take center stage for the championship, and it has a week to build even more before starting at rowdy Oracle Arena.

NFL

Williams wants to play



NEW ORLEANS (AP) — The book on P.J. Williams is that the New Orleans Saints may have gotten a steal.

Scouts and analysts around the league pegged Williams as a high second-round pick — perhaps a late first-rounder in a draft deep with cornerbacks. By the time the 78th pick rolled around, Williams was supposed to be long gone.

Disappointment sometimes sets in for a prospect who falls below his expected slot. After every draft, in nearly every NFL city, a rookie vows to make the teams who passed on him pay, no matter the circumstances of his slip.

Williams is not one of those rookies.

"My dream wasn't to go in the first round," he said. "My dream was to make it here."

Williams entered draft weekend prepared to fall down draft boards.

The Florida State product was arrested April 3 on suspicion of driving under the influence, although the charges were later dropped because of a lack of evidence — a decision announced just

three days before the draft. In October, he also reportedly left the scene of an accident before returning 20 minutes later, according to The New York Times.

Williams spent the three weeks after his arrest meeting with NFL teams in an effort to reassure them he wouldn't be a character concern, but he also knew the incidents might hurt him on draft day. In the end, Williams decided not to dwell on what might have been.

"You're going to think your level of talent is higher than others perceive it, but I was just happy," Williams said. "It was a great opportunity for me. I knew what could have happened, pretty much when it happened, but I was just excited to get drafted by an organization like this."

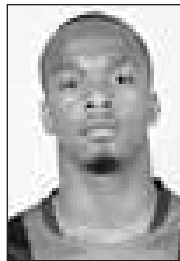
New Orleans may end up being a perfect fit of player and need. The Saints need a new slot cornerback, a position New Orleans considers a starter in the pass-happy NFL and a spot Williams played during his first two seasons at Florida State, although he moved primarily to the outside as a

junior in 2014. During the Saints' rookie minicamp, Williams showed he has the capability to contribute inside. "P.J. has picked things up," Saints coach Sean Payton said. "I do think he is a guy that will have a chance to compete at the nickel."

Williams offers a level of physicality that can bring an added dimension to the role of the fifth defensive back. At 6-foot and 196 pounds, Williams is built like a safety, and he built a reputation at Florida State as a sure tackler who can play at and around the line of scrimmage. If a team can put a physical player in the slot, it opens up the ability to blitz and create turnovers from that spot on the field, similar to the way the Arizona Cardinals use Tyrann Mathieu or the way the Green Bay Packers used to deploy Charles Woodson.

With that in mind, Williams has set out to learn as much as he can from Keenan Lewis and Brandon Brown, the Saints' entrenched veterans at cornerback. Like Williams, both players have made their names in press coverage, but their experience allows Williams to draw on a deep well of knowledge.

"Definitely guys I can learn from, be able to play with and get my game better," Williams said. "I've met with those guys, worked out with them and stuff, and they're giving me tips."



WILLIAMS

SOFTBALL

St. Jude slow pitch tourney

BLAKE BRANCH
blake@press-herald.com

The second St. Jude slow pitch softball tournament is set for May 30, and this year's tournament is aiming to build on the success of the first.

Tournament organizer Caitlin Slaton has been working hard to ensure that the event is a success not just for the participants, but for the children of St. Jude.

"I've always loved the St. Jude auction," Slaton said. "We've always donated and tried to be a part of it the best we could. I've played softball my whole life so I figured why not take something that I love and use it to do something for charity and something so close to the Minden community."

As of now, 10 teams are ready to get out on the diamond, but there is still plenty of time to join in on the festivities and help out the children of St. Jude.

Last year's tournament raised over \$8,000 for St. Jude, and Slaton said more local teams need to sign up if that mark is going to be surpassed.

"We're looking and hoping to have more local teams," Slaton said. "We only have one local Minden team right now so we're hoping people will get involved."

The tournament begins on May 30, at the Minden Recreation Center and the cost of registration is \$200, with all proceeds going straight to the children of St. Jude.

Also, there will be \$10 home run bracelets for sale and participants can pay \$15 to have a crack at the home run derby.

There will be prizes for tournament winners and home run derby winners.

The tournament will be played under USSSA rules with the co-ed teams, split either 6/4 or 7/5.

The following run rules will be in effect: 20-run rule after three innings, 15-run rule after four innings and 10-run rule after five innings.

Each tournament game will be played under a one hour time limit.

For more information, contact Caitlin Slaton (318-918-9860) or Jennifer Russell (318-754-6419).

What could you do with the amazing savings from Webster Printing?

Visit the beach

Go shopping

Buy a car

Have a party

Let us handle your paperwork!

WPC

WEBSTER PRINTING COMPANY

716 BROADWAY • MINDEN, LA 71055

P: (318) 377-8518 • F: (318) 377-8530

WEBSTERPRINTING@SUDDENLINK.NET

ALONG THE WAY

Your way or God's way

High school and college graduates are everywhere. It is an exciting time for them and their families. Decisions are to be made lest the summer gets away! Already many have made decisions leading them to the next level of life: college, trade/business school, military, marriage or jobs to ply their skills. For the most part, they all have been moving down the same road headed toward graduation. Now the road forks and special life-decisions stand before them.

Proverb 16:9 gives practical wisdom for all facing decisions. "A man's heart plans his ways; but the Lord directs his steps." (NKJV). Robert Frost penned the poem THE

ROAD NOT TAKEN which has inspired many through the years as they've pondered over decisions in life. "Two roads diverged in a yellow woods...I took the one less traveled by, and that has made all the difference." We face choices each day. Big or small choices in life should bring us to bended knees and a prayerful attitude before God. Every decision is important. Life is a series of choices/decisions overlaying each other, building a foundation of



BILL CRIDER

trust, surrender, and commitment to God's will. But selfish choices made without God's continual guidance will build a faulty foundation that cannot withstand life's harsh storms that are sure to

come. God's promises throughout the Bible (and there are many) are all designed for our good. He promises that we will prosper when we allow Him to direct our paths. (Proverbs 3: 5-6). That doesn't mean loads of money being dumped at our front door by Clearing House personnel in the next few days. But it does mean we can have a peace of mind, a satisfied heart, a sense of joy about our salvation, eternal security, purpose in life. A Spirit-led focus in life! What more is important?

Our graduates need to be guided down the road that will lead to self-denial, frugal living, sacrificial giving back to God and those in need. We have a responsibility to teach our children how to live a responsible life. God's promise to bless us is couched in the scripture Matt 7:14: "Seek

ye first the kingdom of God and His righteousness; and all these things will be added unto your life." Not all on our 'wants' list will be supplied, but we will have the necessities for a fulfilled life. Divine Guidance, diligent work mixed with a good dose of common sense produces a blessed life.

Some graduates do not want to travel far from home, staying in a safe, protected place. They choose not venture out to see what lies beyond the bends of life. Others will jump on any train, regardless where it is going. Some have made their theme song for life "My Way"! They want to do things their way, forgetting God! But if you are looking for a perfect prescription for life, you had better find another theme song. Perhaps "Have Thine Own Way, Lord!"

Many move to the cross-

roads without realizing 'man is made with purpose in mind.' We are made in God's image to have divine fellowship with Him. Because of man's sin (Adam and Eve), that relationship with God, the Creator, was broken. Through Abraham, God, then, designed a covenant relationship with man, to be passed down through each generation. But man moved farther away from God. Through the ages, He pursued man (Old Testament). He desired to restore that fellowship. The Law was given to help man realize his need for reconciliation with God. Time passed and then it happened!

God unveiled the mystery hidden from man through the ages. Luke 2: "Jesus was born of a virgin." The Savior of the world came to live among us and become the scapegoat for sinful man. He

taught: "Those who believe I am the Savior of the world will be saved." (John 3:16) The Gospel in a nutshell can be remembered in this easy manner: The A,B,C's of Salvation....A - realize all have sinned and come short of God's plan for man; B- believe that Jesus died for our sin; was buried and on the third day He arose from the grave; C- confess our sins and commit our life into the hands of the Lord. As He works His will in our life, He will nudge, direct and lead us to take the high road, which is the narrow trail and few will take it. (Matt. 7:13) The low road is wide and will lead many to destruction and destinations far away from God. (Remember the Prodigal Son - Luke 15)? The decision is clear, though not easy. I challenge you to take the high road...for it will make all the difference.

THE BIBLE SPEAKS

Love who?

I believe all would agree that a Christian should be one who acts like Christ, right? But how often is the evidence lacking. Jesus considered any person worthy of His love and attention even if it raised eyebrows or provoked criticism. Consider His choice of disciples. Matthew, a publican, was classed among the despicable to the Jews - considered a crooked traitor to stoop to exacting exorbitant taxes from his own countrymen as a collector for the hated Romans. "But their scribes and Pharisees murmured against his disciples, saying, Why do ye eat and drink with publicans and sinners? And Jesus answering said unto

them, They that are whole need not a physician; but they that are sick. I came not to call the righteous, but sinners to repentance" Luke 5:30-32. Jesus didn't let such words affect His concern for others.



KATHY IRIZARRY

Then there was His disciple Simon the Zealot. The Zealots were Jews who were aggressively, violently, against Roman rule. While I am confident that Simon changed his course under Jesus' leadership, Jesus was taking a risk to have such a person associated with His cause. Whether a Gentile Centurion, a Samaritan or lepers, Jesus was equally eager to lovingly meet the need of each. Is there a

person or a people group that you just can't find it in your heart to love? If so, it's time to fall at the feet of Jesus and ask for His kind of love for others. We don't want to betray the name "Christian" by our unlikeliness to Jesus.

Here is the acid test. "But I say unto you which hear, Love your enemies, do good to them which hate you, Bless them that curse you, and pray for them which despitefully use you. And unto him that smiteth thee on the one cheek offer also the other; and him that taketh away thy cloak forbid not to take thy coat also. Give to every man that asketh of thee; and of him that taketh away thy goods ask them not again. And as ye would that men should do to you, do ye also to them likewise" Luke 6:27-31.

That's a pretty tall order,

but Jesus showed us how. We have only to walk in His footsteps.

The next time you hear of some terrible deed done by some extremist and a

sense of hatred wells up within you, stop right then and pray for that person. Hate the sin, but love the sinner as did our Example. Jesus loves all. By His won-

der working grace we can be just like Him.

Kathryn Irizarry is a member of the Seventh-day Adventist Church.

THE UPWARD LOOK

The Majestic and Mighty God

"O LORD, our Lord, How majestic is Your name in all the earth, Who have displayed Your splendor above the heavens!" Psalm 8:1 NASB

Like David who wrote this Psalm, when I look into the night sky and gaze at the vastness of the universe, I stand in amazement at how great and sin,



MAX HUTTO

and mighty God is. When I gaze at the splendor of the mountains and fields, the beauty of the trees and flowers, and the abundance of all living creatures, I am amazed by the Creator God. When I think that the Almighty God loved mankind in spite of our rebellion of our rebellion.

When I think that the Lord God would by His mercy and grace provide a forgiving and cleansing salvation, I burst out in praise to the majestic Savior and Lord.

Lord God, let Your wonderful and glorious name be praised in all the earth. May You receive the glory and honor and praise in all that I do this day.

Max Hutto is a Baptist Minister and a resident of Minden. More information can be found at www.upwardlook.org.

"Men ought always to pray"
Luke 18:1

If you are in need of prayer, we can help you.

Contact the
FBC
24-hour
prayer ministry.

Dial
371-PRAY

Want to share the Good News?

Email your column to bruce@press-herald.com

FIRST BAPTIST CHURCH
301 Pennsylvania Avenue • Minden, LA

Obedience

The story of Adam and Eve is difficult to understand. Why was eating from the tree of knowledge of good and evil prohibited? The knowledge of good and evil is the root of having a conscience, and having a conscience is invariably praised as a good thing. The account in Genesis links eating from the tree of knowledge with death: "You are free to eat from any tree in the garden; but you must not eat from the tree of the knowledge of good and evil, for when you eat from it you will certainly die." (Genesis 2:16-17) Why was it necessary for them to die if they ate from this tree?

These are perhaps unanswerable questions, and while it certainly is cause for wonder why knowledge of good and evil is linked to our mortality, perhaps a simpler way to look at this story is to remember that it is part of the creation story, and God is making the rules as he makes the world. What he says literally creates the rules, just as it creates the world, and Adam and Eve were cut off from the tree of life because they were disobedient. Jesus restored our access to it by being obedient to God's will, accepting an agonizing and ignominious death on a cross. Are we being obedient to God's will in our life?

-Christopher Simon



And He said, "Abba, Father, all things are possible for you. Take this cup away from Me; nevertheless, not what I will, but what You will."
Mark 14:36

Your Guide To Area CHURCHES

ASSEMBLIES OF GOD

- Center Assembly of God
Pumpkin Center Rd. • Canton • 544-8888
- Central Assembly of God
2161 Hwy. 90 • Haughton
- First Assembly of God
407 Fort St. • 377-4202
- Peace After Assembly of God
Foster Afton Rd. • Canton • 544-2423
- Peace Chapel Assembly of God
328 Bellvue Rd. • Haughton • 689-4784
- Peace Chapel Assembly of God
State Park Hwy. 103 • Doyline • 745-2530
- Shepherd Heights Assembly of God
1588 Sheppard St. • 377-2844

BAPTIST

- Antech Baptist Church
1182 Hwy. 90 • 377-1682
- Ashland Baptist Church
528 Hwy. 103 • Canton
- Baptist Tabernacle
11181 Hwy 271 • Slidell • 552-2887
- Beach Springs Baptist Church
1510 Hwy. 90 East • 377-3028
- Berwick Baptist Church
1281 Parkers Rd. • 377-1791
- Blue Run Baptist Church
1228 Blue Run Rd. • 377-2274
- Bright Star Baptist Church
4337 Fuller Rd. • 377-9110
- Cadaver Baptist Church MA
1400 Homer Rd. • 382-1018
- Compassion Baptist Church
Cotton Valley • 832-4787
- Eastern Missionary Baptist
1251 Park Hwy. • 377-2528
- Etterwood Baptist Church
713 Homer Rd. • 377-2300
- Frontier Missionary Baptist Church
5284 Hwy. 90 • 377-1557
- Evergreen Baptist Church
Evergreen Road • Minden • 377-4841
- Fellowship Baptist Church
5287 Hwy. 571 • Dobbins • 377-5371
- First Assembly Baptist Church
105 Washington St. • 377-4424
- First Baptist Church Minden
301 Pennsylvania • 377-4424
- First Baptist Church Doyline
College St. • Doyline
- First Baptist Church Cotton Valley
125 Baptist Dr. • Cotton Valley • 832-5288
- First Baptist Church Canton
Hwy. 103 South • Canton • 544-8847
- Galloway Missionary Baptist Church
526 Galloway School Rd. • 377-5515
- Germanian Baptist Church
1828 Dogwood Trail • 377-8824
- High Baptist Church
Hwy. 103 • 377-9134
- Good Shepherd Baptist Church
402 Broadway • Minden
- Greater St. Paul Baptist
610 High St. • 377-0948
- Haughton Valley Missionary Baptist Church
1886 Fuller Rd. • 377-1431
- Holly Springs Baptist Church
Hwy. 79 • Minden
- Holly Baptist Church
Hwy. 377-2783
- Hope Missionary Baptist Church
Hwy. 571 • 377-5923
- King Solomon Baptist Church
373 Salsberry Rd. • 377-8823

Korea Baptist Church

- 1718 Hwy. 527 • Haughton • 947-3382
- Lighthouse Independent Baptist Church
413 Old Anacapa Rd. • 377-1983
- Mayflower Baptist Church
377-9181
- St. Clair Missionary Baptist
371 Bailey St. • 377-1780 or 377-1790
- Mount Comfort Church
247 N. Central Rd. • 377-5841
- St. Paul Baptist Church
523 Park Church Rd. • Slidell • 377-1387
- Mount Pilgrim Baptist Church
200 Camp St. • Minden
- St. Paul Missionary Baptist Church
949 Hwy. 527 • Dobbins
- New Beth Ministries
208 N. Fairview St. • Minden • 377-1488
- New Ebenezer Baptist Church
Church Hwy. 103 • Canton • 544-8823
- New Friendship Baptist Church
Friendship Rd. • Canton • 544-8823
- New Light Baptist Church
413 W. N. Reeder • Minden • 377-2542
- New Remedy Baptist Church
Hwy. 103 South • Slidell • 544-8823
- New Zion Baptist Church
Chick Road, Evergreen Community
377-4520
- New Zion Baptist Church
870 Arroyo Cabot Rd. • Doyline • 745-2705
- North Avenue Baptist Church
1822 Laverne Rd. • 377-4378
- Parkway Baptist Church
1618 Hwy 70 • 377-4287
- Plymouth Baptist Church
227 Oaklawn St. • Slidell • 377-4828
- Plymouth Baptist Church
211 Plymouth Road Baptist Rd. • 849-4108
- Present Hill Baptist Church
Forking • 377-4219
- Present Green Missionary Baptist Church
Hwy. 527 Dobbins Rd.
- Rocky Mt. Baptist Church
1427 Hwy. 534 • 827-9270
- Salem Baptist Church
481 Homer Rd. • Slidell • 377-4813
- Slidell Missionary Baptist Church
482 S. Main St. • Slidell • 377-4822
- St. James Baptist Church
108 St. James Church Rd. • 377-2482
- St. John Divine Baptist Church
817 Lake Rd. • Haughton • 377-1948
- St. Mark Baptist Church, Doyline
Doyline
- St. Paul Baptist Church
811 E. Union St. • 377-5428
- Tenly Baptist Church, Doyline
- Union Grove Baptist Church
Pine Farm Rd. • 377-4152
- Unity Baptist Church
204 Huddle St. • Cotton Valley • 832-4888
- Valley Peace Baptist Church
107 Cross • Cotton Valley • 832-4483
- Valley Spring Baptist Church
212 Fuller Rd. • 377-5773
- West Lake Baptist Church
287 Hwy. 103 • Doyline • 745-2498
- Whispering Pines Missionary Baptist Church
1638 Hwy 371 • 377-5775
- Zion Hill Baptist Church
118 Pigeon Hill Rd. • Doyline • 745-2434

CATHOLIC

- St. Paul Catholic Church
414 Foster Rd. • 377-6384
- CHRISTIAN
- Holy Faith Christian Church
222 Mason Lane • 377-9129
- CHURCH OF CHRIST
- Church of Christ
211 N. College • 377-1987
- Norman Church of Christ
613 Overlook
- CHURCH OF CHRIST IN GOD
- Faith Temple Christian Church of Christ in God
414 Malvern • 377-3028
- CHURCH OF GOD IN CHRIST
- Church of God in Christ
215 Sam • 728 Peach St. • 377-6763
- Crested Hill Church of God in Christ
528 Coughlin
- Forest Chapel Church of God in Christ
310 Sam St. • 377-8882
- Greater Blessing Church of God in Christ
402 Slidell Road • 377-8874
- Lanier Church of God in Christ
518 Collette St. • 377-6287
- New Beginnings Church of God in Christ
718 East St. • 377-8180
- Slidell Church of God in Christ
218 Westhollow St. • 377-5813
- Tanner Church of God in Christ

EPISCOPAL

- St. John's Episcopal Church
1107 Broadway • 377-1258
- FULL GOSPEL BAPTIST
- Peace Temple of Minden
228 N. Fairview • 377-1488
- INDEPENDENT CHRISTIAN
- Yellow Pine Christian Church
Yellow Pine Rd. off Hwy. 7
- Woody Peace & Worship Center
1021 Victory Way • 382-1000
- INTERDENOMINATIONAL
- New Life Fellowship Church
225 Pine St. • 377-0409
- Jehovah's Witness
- Armistead's Witnesses
108 Homestead Hwy • 377-2288
- LATTER-DAY SAINTS
- The Church of Jesus Christ of Latter-Day Saints
212 Wellington Dr. • Slidell • 821-9487
- LUTHERAN
- Immanuel Lutheran Church
286 Arroyo Dr. • Slidell City • 748-2215
- METHODIST
- Brimwood United Methodist Church
Dobbins
- Doyline United Methodist Church
118 Main St. • Doyline • 745-2512
- Evergreen United Methodist Church
Evergreen Road • Minden • 377-8827
- First United Methodist Church
821 Broadway • 377-1483
- First United Methodist Church
160 Church St. • Cotton Valley • 832-5237
- Holly United Methodist Church
124 N. Church St. • Haughton • 377-1978

Lakeview United Methodist Church

- 391 Lakeview Drive • 377-1228
- St. John CME Church
414 E. Union • 377-4171
- New Hope CME
Laverne Rd. • Minden, LA
- Plymouth Road United Methodist Church
Weaver Farm Rd. 4228
- Peace United Methodist Church
4943 Hwy 109 • 377-2698
- Present Valley United Methodist Church
Hwy. 1 North • 377-1124
- Slidell United Methodist Church
402 S. Main St. • Slidell • 377-8808
- Southern Methodist Church
Corner of 14th & Fairview
- St. John CME Church
1048 Salsberry Road • Slidell
- Walter Memorial CME Church
402 Wade Lyons Rd. • 377-2378
- Woody Grove CME
Hurdle Ave. • Cotton Valley • 832-5211
- NON-DENOMINATIONAL
- Christian Church at Minden
400 Broadway St. • 382-2028
- Faith Restoration Ministries
380 Country Club Circle • 377-1927
- Fresh Fire Ministries
427 Meadowview Dr. • 426-1617
- House of Power For All Nations
82 Dobbins Lane • Dobbins • 377-7728
- House of Power - PTBM
1222 Bayou Ave • Minden • 377-4271
- Living Word Working Center
442 Hwy. 103 • 377-9482
- Wiley Walker's Tribal Church
Dobbins • 377-4324
- Minden Christian Center
318 Dobbins St. • 345-2688
- To God Be The Glory Deliverance Outreach Ministries
8758 Hwy 271 • Haughton • 377-8828
- Worship Christian Fellowship
705 Main St. • 377-2478
- PENTECOSTAL
- Apollonia Light House
1501 Laverne Rd. • 377-2628 or 413-6288
- First Pentecostal Church
612 Hwy 527 • 377-6382
- First Pentecostal Church
Oakland • 843-8828 or 377-4822
- First United Pentecostal Church
2127 Hwy 371 • Cotton Valley • 832-4475
- United in Christ Pentecostal Church
5782 Hwy. 7 • 377-8577
- PRESBYTERIAN
- Minden Presbyterian Church
1021 Broadway St. • 377-3580
- SEVENTH-DAY ADVENTIST
- Minden Seventh-Day Adventist Church
108 Harvey's Hwy • 377-9275
- New Start Seventh-Day Adventist Church
108 Wiggins St. • 382-2888
- UNITED PENTECOSTAL
- Apollonia Temple of Truth
124 Main Grocery Rd. • 377-0175
- First Pentecostal Church
612 Hwy 527 • 377-6382
- Haughton United Pentecostal Church
127 Oak Lane • 949-8827
- WORD-BASED MINISTRY
- Full Deliverance Christian Outreach
701 Central St. • 377-0110

The Church Page is brought to you by the following businesses:

Coca-Cola
Coca-Cola Bottling Company of Minden, Inc.
500. Box 893 • 412 Pine Street
Minden, LA 71055 • Telephone (318) 377-6848
(800) 454-7103 • Fax (318) 377-9334

GBT
GIBSLAND BANK & TRUST
Great Banking Team
www.GibslandBank.com
FDIC

KFC
"See You After Church"
377-8828
1650 Homer Rd.
Minden, LA

Morris GUIN, CL
WEBSTER FARM ASSURANCE
P.O. Box 734
183 South Munster Street
Minden, LA 71058-0734
Phone (318) 377-9111
Fax (318) 377-9331
Call (318) 560-3268
www.websterfarm.com
websterfarm@thebonath.net

Let us handle your paperwork!!
WPC
WEBSTER PRINTING COMPANY

DIXIE PAPER CO.
Tiger Products Natural Paper Quantity
P.O. Box 1041 • Minden, LA 71058
1-800-824-8348 • andy@dixiepaper.net

This Space Available
Call 377-1866 and speak to an Ad Rep for details.

HARPER MOTORS
200 HIGHWAY 531 • MINDEN • 377-0395

BOSSIER PRESS-TRIBUNE
www.bossierpress.com
4200 Viking Drive
Bossier City, Louisiana 71111
318.247.7900
BPT

This Space Available
Call 377-1866 and speak to an Ad Rep for details.

"Serving all of North Louisiana with the Highest Standard of Palliative Care"
GAMBLE HOSPICE CARE
318-371-1140 203 Pearl Street • Minden, LA
GamblesHospiceCare.com

HINES
Family Practice
Serving Minden since 1979
Dr. Carl H. Hines
Hours: Mon-Fri 8:30 am - 5 pm, Sat 11:15 - 1:15 pm
1118 Homer Road • 377-1395

MINDEN PRESS-HERALD
"Your local news source!"
203 Gleason Street • Minden, LA 71055
Phone: 318-377-1866 • Fax: 318-377-1895
www.press-herald.com

ALWAYS Low Prices
Always WAL-MART

This Space Available
Call 377-1866 and speak to an Ad Rep for details.

PRIMETIME TELEVISION

'Dancing,' 'Voice' on top as viewers got musical last week

NEW YORK (AP) — Music and dancing ruled on the airwaves last week, as "Dancing With the Stars" and "The Voice" tuned up to score five out of the 10 most-watched shows.

ABC's "Dancing" took the top two slots, followed by a pair of regular broadcasts of NBC's "The Voice." A third, special edition of "The Voice" ranked ninth.

Adding to the chorus of unscripted fare, CBS' "Survivor" took fifth place, according to the Nielsen ratings company.

Cable crept into the rankings courtesy of TNT's telecast of Sunday's NBA playoff game between Atlanta and Cleveland. That game, with 7.8 million viewers, rounded out the week's Top 10.

Perhaps the week's most unusual special, "Red Nose Day," seemed to blow it with viewers. The first outing of what is hoped to be an annual entertainment-charity fundraising event averaged only 3.2 million viewers during its three star-studded hours.

For the week overall, CBS averaged 6.2 million viewers in prime time, ahead of NBC's 5.6 million, ABC's 5.4 million and Fox's 3.8 million. Univision had 2.2 million, Telemundo had 1.4 million, the CW had 1.2 million and ION Television had 1.0 million.

As the NBA playoffs continued, TNT remained the most popular cable network, averaging 3.00 million viewers in prime time. ESPN had 2.45 million, USA had 1.74 million and TBS had 1.51 million.

The see-saw ratings race for evening news viewers continues. After the previous week's loss, NBC's "Nightly News" reclaimed the lead with 7.59 million view-



A scene from 'The Voice' on NBC. Courtesy Photo

ers. ABC's "World News Tonight" had 7.54 million and CBS had 6.90 million.

For the week of May 18-24, the top 10 shows, their networks and

viewerships: "Dancing With the Stars" (Monday), ABC, 14.35 million; "Dancing With the Stars" (Tuesday), ABC, 13.49 million; "The Voice" (Tuesday), NBC,

11.56 million; "The Voice," NBC, 11.32 million; "Survivor," CBS, 9.74 million; "NCIS: Los Angeles," CBS, 9.33 million; "NCIS," CBS, 9.15 million; "The

Big Bang Theory," CBS, 8.11 million; "The Voice" (special), NBC, 7.83 million; NBA Playoffs: Atlanta/Cleveland (Sunday), TNT, 7.76 million.

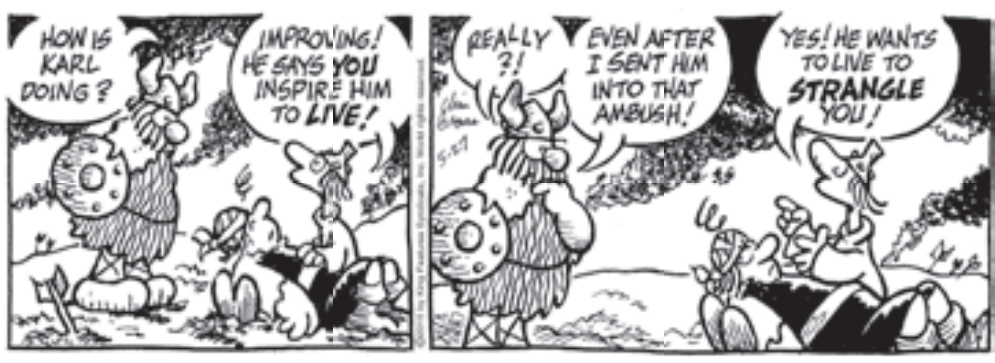
"The Voice" (Tuesday), NBC, 11.56 million; "The Voice," NBC, 11.32 million; "Survivor," CBS, 9.74 million; "NCIS: Los Angeles," CBS, 9.33 million; "NCIS," CBS, 9.15 million; "The

Big Bang Theory," CBS, 8.11 million; "The Voice" (special), NBC, 7.83 million; NBA Playoffs: Atlanta/Cleveland (Sunday), TNT, 7.76 million.

BABY BLUES | RICK KIRKMAN AND JERRY SCOTT



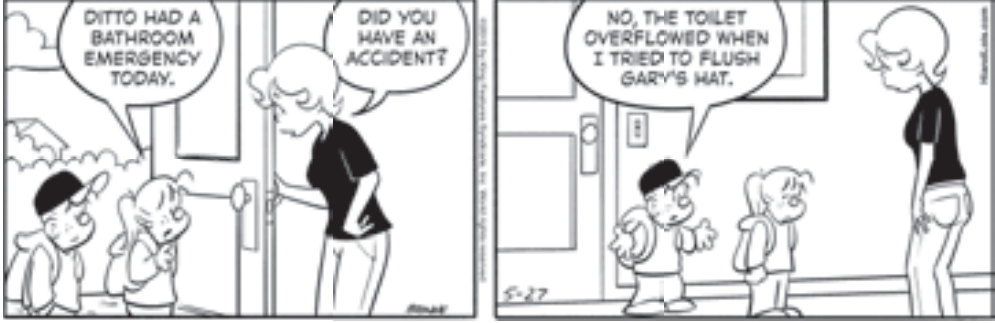
HAGAR THE HORRIBLE | CHRIS BROWNE



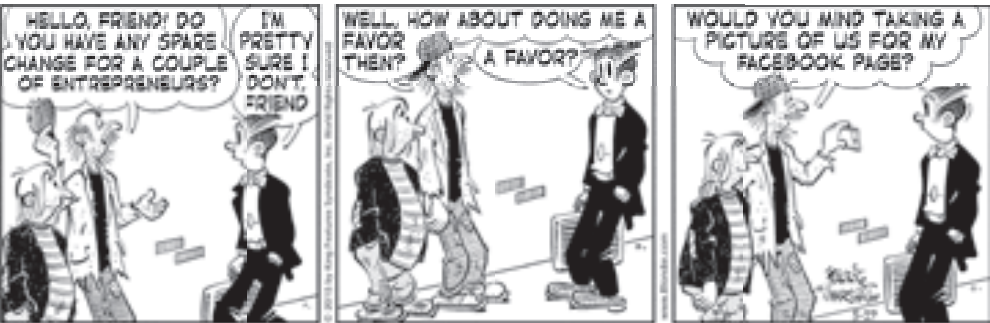
BEEBLE BAILEY | MORT & GREG WALKER



HI AND LOIS | BRIAN WALKER, GREG WALKER AND CHANCE BROWNE



BLONDIE | DEAN YOUNG AND JOHN MARSHALL



MOTHER GOOSE & GRIMM | MIKE PETERS



FUNKY WINKERBEAN | TOM BATIUK



SAM AND SILO | JERRY DUMAS



C NORTHWEST LOUISIANA CLASSIFIEDS

The Marketplace of Webster and Bossier Parishes.

MINDEN PRESS-HERALD | 203 Gleason Street • Minden, La. 71055 | 318-377-1866 | www.press-herald.com



Grow Your Business
Call Courtney to place your ad!

377-1866
PLACE YOUR AD TODAY!

Classified line ads are published Monday through Friday in the Minden Press-Herald, Bossier Press-Tribune and online at **press-herald.com**



Rates

Pricing is easy!

\$7.75

Per Day - Up to 20 words! Additional words are only 30¢ cents more!

Garage Sales
No word limit.

\$11

One Day

\$16.50

Two Days

Receive a **FREE Garage Sale Kit** with your two day ad!

*Garage Sale ads must be prepaid.

Deadlines

Ads

Line ads must be submitted by noon the day before publication. Display ads two days prior to publication.

Public Notices

Public notices must be submitted two days prior to publication date depending on the length. Notices may be emailed to classifieds@press-herald.com

Payments

Cash, Checks, Billing



Real Estate Notice

"All real estate advertised herein is subject to the Federal Fair Housing Act, which makes it illegal to advertise any preference, limitation or discrimination based on race, color, religion, sex, handicap, familial status, or national origin, or intention to make any such preference, limitation, or discrimination. We will not knowingly accept any advertising for real estate, which is in violation of the law. All persons are hereby informed that all dwellings advertised are available on an equal opportunity basis.

APARTMENTS FOR RENT

Hillside Apartments
1, 2 & 3 Bedrooms
400 Hillside Lane
Minden, LA 71055
318-377-5550

Lots of Room
Washer & Dryer connections
Sparkling Pool

Red Oak Villa

1155 Sheppard St.
Minden, LA

Carfree Independent Living For The Elderly

Low income subsidized housing. Free water & garbage. Mailboxes & laundry rooms. Emergency call system. Convenient to banking & shopping.

377-8474
8:00 - 4:00 - Mon. - Fri.

SUV'S



FOR SALE 2005 Pontiac Aztek Rally Edition \$3800 200K miles, runs great, air works, clean interior, automatic, clear title 780-8191

RENTAL

2BR 1BA HOUSE
631 Lewisville Rd. Kitchen appliances furnished. \$600/dep \$600/ mo. 377-5874. If no answer, leave message.
2BR MH off HWY 9
near Homer.. \$350/ mo 584-4373
3BR 2BA S/S Double
carport, has fridge, electric stove, dishwasher, ready by June 1st. 268-5932
BETWEEN MINDEN AND HOMER off Hwy 79. 3br, 2 bath, Din, Den, Liv, Central, Carport and shop on 2 acres. NO Smoking No Inside Pets. \$800 per month, first and last plus deposit. 318-218-4694

BOATS

FOR SALE 2008 Nitro Z-6 115 HP Merc. \$12,500 Firm. 318-265-0266

WANTED

FARMERS & VENDORS WANTED for the farmers market Saturdays in June and July at **The Farm** Call 268-2122 or 268-4555

SERVICES

GREEN LEAF LAWN & GARDENING, LLC
318-707-5785
NEED LAWN CARE SERVICE? Please call **Law n Management** for free quote! Mowing, edging, weed eating. 318-377-8169

EMPLOYMENT

6 TEMPORARY WORKERS Spencer Goldsmith Ranch Spencer Goldsmith 2598 CR 119 Baird TX. 79504 Occupation: Farm workers, Farms, Ranch and Animals 7/13/2015 - 01/13/2016 Pay rate \$10.35 per hour Farm workers Guaranteed 3/4 of contract hours. All tools, supplies, equipment and housing will be Provided at no cost to the worker. Duties Cattle Working. Herding cattle, castrating, branding, weighing, loading animals on truck, or enclosures, vaccination. Workers are required to have a minimum of two months' work experiences. Job specification Exposure to extreme temperature. Extensive sitting Lifting requirements up to 40lb, Repetitive movement Extensive pushing and pulling Extensive walking, frequent stooping. Transportation and Subsistence expense reimbursed after 50 % of contract is complete. Interested applicants can send resumes to nearest State Workforce Agency office (512) 475-2571 Using job listing TX836241

CARING & COMPASSIONATE CNA'S WANTED

Apply in person. Cypress Point Nursing Center Bossier City, LA (behind Lowe's on Douglas Dr.) 318-747-2700 Come & make a difference in someone's life

CW&W CONTRACTORS Sibley, la Now hiring for the following Positions: Heavy equipment diesel mechanic Heavy equipment operators Grapple truck drivers/ operators Low-boy and dump truck drivers Very competitive pay and benefits Package available. Send resume to hr@cwcontractors.com Or call 318-377-4823

FIBERBOND JOB FAIR Thursday, May 28th 9am - 2pm at the Minden Chamber of Commerce. Bring your resume. **NOW HIRING** qualified servers, hostesses and food runners/ bussers. Email contact information and previous work experience to admin@myromas.com. Private Assistant needed, must have good communication skills. Offer \$510 weekly interested person Should send resume : samirpms@outlook.com

RINGGOLD NURSING AND REHABILITATION CENTER is currently seeking FT LPNs on all shifts. HIGHER PAY FOR A SPECIALIZED UNIT! A great work environment and a low staff to resident ratio make RNRC a great place to work! Apply on-line at ringgoldnursing.iapplicants.com. Call Jessica Wren at 894-9181 for more info.

STAT HOME HEALTH in Sibley is looking for a full-time office RN case manager, Full-time office LPN case manager asst., and Full-time field RN with home health or med-surg experience. M-F, 8a-5p. please email resume to avarnell@stathomehealth.net, fax to 318-371-3675 or come by 252 N Main St., Sibley to fill out an application.

FOR SALE

08 KUBOTA TRACTOR L2800 Diesel with 5ft finish mower and metal roof. \$6,000 318-927-9234

GE DIGITAL CAMERA Great Condition. Great for summer vacations. \$50 Call 318-658-2923

TURN KEY 10K GENERATOR with 50ft cable to attach to home meter. \$1,000 371-9150

GARAGE SALES

1104 BEECH STREET Friday May 29th and Saturday May 30th 7am-Until 3. family garage sale.

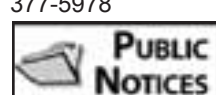
1205 BONNIE LANE Friday and Saturday! Multit-Family garage sale! Women's and babies clothing, home decor, and much more!

433 HANSON DR DOYLINE rain or shine Saturday May 30th 8a-4p. In metal building in back yard, moving can't take it, can't leave it. Everything must go, tools, furniture, collectables, books and appliances.

HOMES FOR SALE

COMPLETELY REMODELED!!! 4bd/2b 2108sqft manufactured home in country on 1 acre in Doynline, la. \$109,900. For showing/more info & pics, call/text tom 812-798-1583

HOME FOR SALE Heflin, Lake Bistineau, on the channel. 2br/2ba 3 carport, F. Dinning, Office, Utility, Shop and 2 piers. Awesome View. 318-377-5978



BIDS INVITED OFFICIAL JOURNAL July 1, 2014 to June 30, 2016

Sealed bids for Official Journal will be received by the Webster Parish Police Jury until the hour of 2:00 p.m., Monday, June 1, 2015, in the 3rd floor meeting room of the Webster Parish Courthouse, 410 Main Street, Minden, LA 71055 at which time bids will be opened and read aloud. Bids shall be for the period of July 1, 2015, through June 30, 2016, and shall be submitted in written form and signed by the publisher of the newspaper submitting the bid. Journal must qualify under the law for printing official proceedings of a public body. All Bidders must publish at least 5 days

weekly. Bid forms may be obtained at the Office of the Secretary, Webster Parish Police Jury. Ronda C. Carnahan

May 14 & 21 & 28, 2015
Minden Press-Herald

BIDS INVITED ADDENDUM #1 OFFICIAL JOURNAL July 1, 2014 to June 30, 2016

Sealed bids for Official Journal will be received by the Webster Parish Police Jury until the hour of 2:00 p.m., Monday, June 1, 2015, in the 3rd floor meeting room of the Webster Parish Courthouse, 410 Main Street, Minden, LA 71055 at which time bids will be opened and read aloud. Bids shall be for the period of July 1, 2015, through June 30, 2016, and shall be submitted in written form and signed by the publisher of the newspaper submitting the bid. Journal must qualify under the law for printing official proceedings of a public body. Bid forms may be obtained at the Office of the Secretary, Webster Parish Police Jury. Ronda C. Carnahan

May 25, 2015
Minden Press-Herald

PUBLIC NOTICE

Minden Planning Commission Meeting

June 4, 2015
10:00 a.m.

Pelican Conference Room - Minden City Hall

On the agenda is a request from James & Kimberly Huffman for a zoning variance on property owned and by them located at the municipal address of 1108 Broadway Street. This property is zoned R-2 (Single Family Residential). The purpose of this zoning variance is to use the property as a bed and breakfast facility. The residence will continue to be owner occupied and there will be no improvements necessary with the exception of minor cosmetic changes.

Legal Description: THE NORTH 225 FT. OF LOT #123, WILLIAMSON JONES MAP OF MINDEN & STRIP 15 X 225 FT. ADJ. IN NE/4 OF SW/4 SEC. 22-19-9 (FORMERLY AN ALLEY) (BEING A LOT FRONTING 95 FT. ON N. BROADWAY X 225 FT.)

All interested parties will be given a chance to be heard.

May 14 & 21 & 28, 2015
Minden Press-Herald

The Water We Drink Central Water System Public Water Supply ID: LA119003
We are pleased to present to you the Annual Water Quality Report for the year 2014. This report is designed to inform you about the quality of your water and services we deliver to you every day. (Este informe contiene informacion muy importante sobre su agua potable. Traduzcalo o habble con alguien que lo entienda bin). Our constant goal is to provide you with a safe and dependable supply of drinking water. We want you to understand the efforts we make to

continually improve the water treatment process and protect our water resources. We are committed to ensuring the quality of your water. Our water sources are listed in Table A on page 11. The sources of drinking water (both tap water and bottled water) include rivers, lakes, streams, ponds, reservoirs, springs, and wells. As water travels over the surface of land or through the ground, it dissolves naturally-occurring minerals and, in some cases, radioactive material, and can pick up substances resulting from the presence of animals or from human activity. Contaminants that may be present in the water include: **Microbial Contaminants**- such as viruses and bacteria, which may come from sewage treatment plants, septic systems, agricultural livestock operations, and wildlife. **Inorganic Contaminants**- such as salts and metals, which can be naturally-occurring or result from urban stormwater runoff, industrial, or domestic wastewater discharges, oil and gas production, mining, or farming. **Pesticides and Herbicides**- which may come from a variety of sources such as agriculture, urban stormwater runoff, and residential uses. **Organic Chemical Contaminants**- including synthetic and volatile organic chemicals, which are by-products of industrial processes and petroleum production, and can also come from gas stations, urban stormwater runoff, and septic systems. **Radioactive contaminants**- which can be naturally-occurring or be the result of oil and gas production and mining activities. A Source Water Assessment Plan (SWAP) is now available from our office. This plan is an assessment of a delineated area around our listed sources through which contaminants, if present, could migrate and reach our source water. It also includes an inventory of potential sources of contamination within the delineated area, and a determination of the water supply's susceptibility to contamination by the identified potential sources. According to the Source Water Assessment Plan, our water system had a susceptibility rating of 'LOW'. If you would like to review the Source Water Assessment Plan, please feel free to contact our office. In order to ensure that tap water is safe to drink, EPA prescribes regulations which limit the amount of certain contaminants in water provided by public water systems. Food and Drug Administration regulations establish limits for contaminants in bottled water which must provide the same protection for public health. We want our valued customers to be informed about their water utility. If you have any questions about this report, want to attend any scheduled meetings, or simply want to learn more about your drinking water, please contact

SAMUEL MIMS (MRDL)- The highest level of a disinfectant allowed in drinking water. There is convincing evidence that addition of a disinfectant is necessary for control of microbial contaminants. **Maximum residual disinfectant level goal (MRDLG)-** The level of a drinking water disinfectant below which there is no known or expected risk to health. MRDLG's do not reflect the benefits of the use of disinfectants to control microbial contaminants. During the period covered by this report we had noted violations of drinking water regulations in tables B-G. Our water system tested a minimum of 2 samples per month monthly sample(s) in accordance with the Total Coliform Rule for microbiological contaminants. During the monitoring period covered by this report, we had the following noted (in table B) detections for microbiological contaminants. In tables D-G we have shown the regulated contaminants that were detected. Chemical Sampling of our drinking water may not be required on an annual basis; therefore, information provided in this table refers back to the latest year of chemical sampling results.

+++Environmental Protection Agency Required Health Effects Language+++ Some people may be more vulnerable to contaminants in drinking water than the general population. Immunocompromised persons such as persons with cancer undergoing chemotherapy, persons who have undergone organ transplants, people with HIV/AIDS or other immune system disorders, some elderly, and infants can be particularly at risk from infections. These people should seek advice about drinking water from their health care providers. EPA/CDC guidelines on appropriate means to lessen the risk of infection by Cryptosporidium and other microbial contaminants are available from the Safe Drinking Water Hotline (800-426-4791).
There are no additional Required Health Effects Notices:
There are no additional required health effects violation notices.
+++++++
Thank you for allowing us to continue providing your family with clean, quality water this year. In order to maintain a safe and dependable water supply we sometimes need to make improvements that will benefit all of our customers.
We at the CENTRAL WATER SYSTEM work around the clock to provide top quality drinking water to every tap. We ask that all our customers help us protect and conserve our water sources, which are the heart of our community, our way of life, and our children's future. Please call our office if you have questions.

CLASSIFIEDS

facebook.com/mindenph

THANK YOU FOR READING!

Table A

Source Name	Source Water Type
WELL #3	Ground Water
WELL #2	Ground Water

Table B

Type	Category	Analyte	Compliance Period
MONITORING (TCR), ROUTINE MAJOR	MON	COLIFORM (TCR)	11/1/2014 - 11/30/2014
MONITORING, ROUTINE (DBP), MAJOR	MON	CHLORINE	4/1/2014 - 6/30/2014
PUBLIC NOTICE RULE LINKED TO VIOLATION	PN	PUBLIC NOTICE	9/17/2014 - 1/13/2015

Table C

Microbiological	Result	MCL	MCLG	Typical Source
No Detected Results were Found in the Calendar Year of 2014				

Table D

Regulated Contaminant	Collection Date	Highest Value	Range	Unit	MCL	MCLG	Typical Source
DI(2-ETHYLHEXYL) PHTHALATE	7/8/2013	0.98	0.98	ppb	6	0	Discharge from rubber and chemical factories
FLUORIDE	7/8/2013	0.7	0.3 - 0.7	ppm	4	4	Erosion of natural deposits, Water additive which promotes strong teeth; Discharge from fertilizer and aluminum factories

Table E

Lead and Copper	Date	90 th Percentile	Range	Unit	AL	Sites Over AL	Typical Source
COPPER, FREE	2010 - 2012	0.2	0.2 - 0.5	ppm	1.3	0	Corrosion of household plumbing systems; Erosion of natural deposits; Leaching from wood preservatives
LEAD	2010 - 2012	2	1 - 3	ppb	15	0	Corrosion of household plumbing systems; Erosion of natural deposits

Table F

Disinfection Byproducts	Sample Point	Period	Highest URAA	Range	Unit	MCL	MCLG	Typical Source
TOTAL HALOACETIC ACIDS (HAA5)	BOGALEWIS FLUSH VALVE	2014	35	25.2 - 46.9	ppb	60	0	By-product of drinking water disinfection
TOTAL HALOACETIC ACIDS (HAA5)	BURSON ROAD	2014	35	25.2 - 56.6	ppb	60	0	By-product of drinking water disinfection
TTHM	BOGALEWIS FLUSH VALVE	2014	48	36.7 - 63.7	ppb	80	0	By-product of drinking water chlorination
TTHM	BURSON ROAD	2014	33	23.4 - 37.6	ppb	80	0	By-product of drinking water chlorination


Table G

In the table below, we have shown the deficiencies that were identified during our latest survey done by the Louisiana Department of Health and Hospitals. These are deficiencies that we are currently working to resolve.

Date Identified	Facility	Category code	Activity Name	Due Date	Comments
12/18/2014	WATER SYSTEM	SE11			LAC 51:001.015.A - Fencing
12/18/2014	DISTRIBUTION SYSTEM	DS17			LAC 51:001.003.B - Coliform Routine Compliance Monitoring
12/18/2014	WELL #2	SO30			SAC WL - TSS 3.2.7.3.a.4 - GW - Check and Shutoff Valve, Pressure Gauge, Flow Meter, and Sample Tap

EMPLOYER: Bernard F Mokry (361-857-2976)
LOCATION: Corpus Christi, TX
OCCUPATION: Agricultural Equipment Operator
 Temporary need for farm equipment operator, tractor driver, combine driver, equipment servicing (grease, oil change, etc), shop work.
TEMPORARY POSITION: ONE (1) PERSON NEEDED
START DATE: 05/28/2015 - 12/01/2015
WAGES OFFERED: \$11.00 per hour
 The three-fourths Guarantee
 The employer will provide three-fourth guarantee to offer the worker employment for an total of work hours equal to at least three-fourths of the workdays of the total period of beginning with the first workday after the arrival of the worker at the work place of employment or the advertisement contractual first date of need whichever is later, and ending on the expiration date specified in the work contract.
 Work tools, supplies and equipment will be provided at no extra cost to the H2 A worker and those workers in correspondence employment who are not reasonably able to return to their residence within the same day, housing provided at no extra cost to the worker, 2 bedrooms, 2 bathrooms, kitchen, fully furnished, 4 person capacity home.
 Transportation and subsistence expenses to the worksite will be provided by the employer or paid by the employer upon completion of 50 percent of the work contract, or earlier, if appropriate.
 Position is temporary and only (1) job opening
PLEASE SEND YOUR RESUME TO THE NEAREST LOCAL OFFICE OF THE STATE WORKFORCE AGENCY (SWA) please refer to job order number TX3308192. (512-475-2571)

EMPLOYER: Lawrence J Mokry (361-813-8191)
LOCATION: Corpus Christi, TX
OCCUPATION: Agricultural Equipment Operator
 Temporary need for sprinkling, planting, harvesting, irrigation, maintenance and repair of motors. Operate and maintain agricultural equipment, maintain machines, monitoring of crops.
TEMPORARY POSITION: ONE (1) PERSON NEEDED
START DATE: 05/28/2015 - 12/01/2015
WAGES OFFERED: \$12.00 per hour
 The three-fourths Guarantee
 The employer will provide three-fourth guarantee to offer the worker employment for an total of work hours equal to at least three-fourths of the workdays of the total period of beginning with the first workday after the arrival of the worker at the work place of employment or the advertisement contractual first date of need whichever is later, and ending on the expiration date specified in the work contract.
 Work tools, supplies and equipment will be provided at no extra cost to the H2 A worker and those workers in correspondence employment who are not reasonably able to return to their residence within the same day, housing provided at no extra cost to the worker, 2 bedrooms, 2 bathrooms, kitchen, fully furnished, 4 person capacity home.
 Transportation and subsistence expenses to the worksite will be provided by the employer or paid by the employer upon completion of 50 percent of the work contract, or earlier, if appropriate.
 Position is temporary and only (1) job opening
PLEASE SEND YOUR RESUME TO THE NEAREST LOCAL OFFICE OF THE STATE WORKFORCE AGENCY (SWA) please refer to job order number TX2830104. (512-475-2571)



**Got your attention?
Good.**

The first rule of advertising is catching their eye.
The second is sustained, repeated advertising.

Advertising doesn't cost, it PAYS!

MINDEN PRESS-HERALD

For more information, call an Advertising Representative today at 377-1866.

SMALL ADS DO SELL! CALL AND PLACE YOURS TODAY! 377-1866

CRYPTOQUIP

V X V Y S Y S H I M P T T X N N T
 E S U F M T K X N V M K F V U U
 Y W I E N X N K B M W Y I , C K Y O E T Y V
 E V Y B L K U T L O H V C - P S H H W S X .
Yesterday's Cryptoquip: WHEN A FAMOUS SEISMOLOGIST HAD A FITTING FOR A TOUPEE, WAS IT MEASURED ON THE RICHTER SCALP?
 Today's Cryptoquip Clue: U equals L

CROSSWORD

ACROSS
 1 Read quickly
 5 The whole shebang
 8 Eastern potentate
 12 Author Morrison
 13 Halloween cry
 14 Easter emblem
 15 Winged bird?
 16 Early Gilligan's home
 17 Bicycle-seat style
 20 Restaurant chain acronym
 22 "Blondie" or "Zits"
 26 Face-to-face exams
 29 Cistern
 30 Altar affirmative
 31 Jackknife, for one
 32 Crony
 33 Had more than a hunch
 34 Female deer
 35 Roscoe

DOWN
 1 Impale
 2 Caffeine-rich nut
 3 — instant
 4 Saint-hood prerequisite
 5 Perpendicular to the keel
 6 Journal
 7 Sane
 8 "Cats" inspirer
 9 Typo
 10 Ailing
 11 Pumpernickel alternative
 19 Ph. bk. data
 21 DDE predecessor
 23 The former Mrs. Trump
 24 Notion
 25 "Hogan's Heroes" group
 26 Probability
 27 Laugh-a-minute
 28 Distaste
 32 Cinderella's coach, really
 33 Casual dismissal
 35 Coll. transcript stat
 36 Thickness
 38 Cove
 39 Bank transactions
 42 Genealogy chart
 43 Morays, e.g.
 44 Deteriorates
 45 Satchel
 46 Hearty brew
 48 Debtor's letters

Solution time: 24 mins.



Yesterday's answer 5-28

1	2	3	4	5	6	7	8	9	10	11	
12				13			14				
15				16			17				
18				19		20	21				
			22			23			24	25	
26	27	28				29			30		
31				32			33				
34				35			36				
37				38			39				
		40				41			42	43	44
45	46			47	48		49				
50				51			52				
53				54			55				

ATTENTION

CALL 377-1866
 ADVERTISING REPRESENTATIVE TODAY!
 SPEAK TO AN ADVERTISING REPRESENTATIVE TODAY!
 377-1866

BUSINESS & SERVICE DIRECTORY

ADVERTISE your business!
Call Telma or Curtis
at 377-1866.



PROFESSIONAL REFERENCES FOR ALL YOUR NEEDS

T & I ROOFING, LLC

Licensed & Insured

- Leak Repair
- Shingle Roofs
- Metal Roofs
- Flat Roofs
- Construction SVCS
- Senior Citizen Discount

150 Years Combined Roofing Experience

Work Guaranteed in Writing

Ask for Todd • FREE ESTIMATES • 318-458-5544

MITCHELL DIRT & ASPHALT

- Asphalt & Concrete Paving
- Dirt Work & Hauling
- Demolition

Contact Keith
377-8594 or 470-0812

Service Experts

HEATING & AIR CONDITIONING

AC NOT COOLING? CALL US TODAY!

WE DO: REPAIRS • INSULATION
SCHEDULE MAINTENANCE
NEW INSTALLATIONS
DUCT WORK • SOLAR

20% OFF REPAIR WITH FD

318-751-9289
WWW.SERVICEEXPERTS.COM

Dixie Floors, Inc

Serving All Of Northwest Louisiana

Hot Deals!
All prices are INSTALLED

Starting at \$1.17 sq ft Carpet & Pad
Starting at \$3.99 sq ft Laminate
Starting at \$4.99 sq ft Ceramic Tile

Free Estimates

Across the street from Capital One Bank
318.377.8979
617 Main Street, Minden, LA

Carpet
Vinyl
Laminate
Tile
Ceramic
Wood

PINK PRAT & QUE

731 MAIN STREET | MINDEN, LA | (318) 638-5035

- post opt supplies for breast prothesis
- bras
- lingerie
- shapewear for any occasion

STORE HOURS:
MON-THU 9AM-5PM
FRI-SAT 9AM-4PM
SUN 10AM-3PM
AFTER HOURS:
(318) 554-0146

NOW ACCEPTING: MEDICAID, MEDICARE, & PRIVATE INSURANCES

PINKPRAT&QUEATTN.COM

LILLY'S LAWN CARE

318.294.6867

Licensed & Insured

Changing Behavior Services, LLC

Mental Health Rehab Agency
Family, Individual & Group Counseling

Psychiatric Rehabilitation Services Includes:

- Assessment & Reassessment for MHRR Services
- Individual and Group Psycho-social Skills Training
- Family, Individual and Group Counseling
- Medication Management and Education

Clinical Staff Experience Includes:

- Master Level Staff
- Licensed Professional Counselors
- Licensed Clinical Social Workers

Office: 318-371-6707 Fax: 318-377-8164
114 West Union Street • Minden, LA 70155

Chelsea Starkey REALTOR®

Cell: 318-464-4818
chelseastarkey@gmail.com
www.diamondrealtysbc.com

315 East Texas Street
Bossier City, LA 71111
Office: 318-746-0011
Fax: 318-746-0939

"Making your dreams come true with the Diamond difference!"

DIAMOND REALTY

HOL-MONT

Sales • Rental

YOUR OUTDOOR POWER EQUIPMENT HEADQUARTERS

1040 HWY. 531 • MINDEN, LA • (318) 371-0550

YOUR SOURCE FOR OUTDOOR POWER AND RENTAL EQUIPMENT!

YETI COOLERS

FULL LINE YETI DEALER!

RENTAL EQUIPMENT FOR YOUR HOME PROJECTS:

Come see us on Highway 531 just 1.5 miles north of I-20 on exit 49
Monday-Friday 8:00-5:00 Saturday 8:00-12:00

Lucky Brake Driving Academy

Drivers Ed • Defensive Driving • Driving Lessons

LICENSED INSTRUCTORS
Elizabeth M. Hollingsworth
Owner, TPI
Paulista H. Gilbert
Kathie Boyett
Carolyn Hollingsworth

209 Pine • Minden
318-299-3853

Follow us on Facebook!

Pool Problems?

WE NOW OFFER MONTHLY SERVICE FOR \$75

Go Local. Go Pool Fool.
371-7773

Exclusively at The Gift Gallery

Music of the Spheres

ASSOCIATED IN AUSTIN, TEXAS USA

Hearing is believing

ACE Hardware Gift Gallery 318-382-9000
807 Homer Road Minden, LA

Taylor-Made Welding

Ornamental Iron Work or Custom Fabrication
Hand Rails, Trailers, Fences, Gates, Repairs and more

Rex David Taylor
812 Brackin St.
Minden, LA 71055
318-401-0835 • 318-230-5119

"You want it, I'll weld it."

Leigh's Maintenance Service

FREE Estimates!
Senior Discounts Available

Home Remodeling
Pressure Washing
Home Maintenance
Interior/Exterior Painting

318-245-0241

LAWN Management

Call today for a free quote! 318-377-8169

Weed Eating • Edging • Mowing • Blowing
Other Services

VISA

Brown

Chrysler • Dodge • Jeep • Ram

Competitive Everyday!

377-9855
1226 Homer Road • Minden

"Come Ride With Us"

Webster Parish Police Jury
Office of Community Services
PUBLIC TRANSPORTATION

Medical appointments, work, shopping, banking or visiting. From Springhill to Shreveport and all points in between we will get you there with dependable, courteous services.

For information or to schedule a ride
318-377-7022 - Minden
318-539-5696 - Springhill

Handicap & wheelchair accessible
Equal opportunity employees/services

Monthly Bus Passes Available

Shull Tree Service, LLC

Licensed & Insured Arborist
28 Years Experience
Honest, dependable, efficient
FREE ESTIMATES

- Tree Removal
- Tree Trimming
- Chipping & Hauling
- Clean-up
- Stump Grinding
- Firewood

Gerald Shull, Owner • 377-7725 or 470-5570

Brown Service Center

Fast oil changes starting at \$29.99
The Sales and Complete Service Available

390-1520
904 Homer Road • Minden

HAVE YOU HEARD?

Tru-Tone Hearing Aid Center

Has served the NWLA area for over 30 years providing experience, convenience, quality and value, the newest technology, a money back guarantee and easy financing for all your hearing needs!

371-0995
338 Morris Drive • Minden

Herman

ADVERTISE HERE!

Call 377-1866 and speak to an advertising representative today!

GT Hauling

Bobcat • Mulch/Forestry Head
Owner - Tommy Cookard

For Overgrowth, Shooting Lanes, Fence Lines, and Bucket Work

716 Corey Lake Rd | Minden, LA
318-371-1743 or 318-294-5052