



MINDEN PRESS-HERALD

www.press-herald.com

September 18, 2015 | 50 Cents

FRIDAY

INSIDE
today



Fleming criticizes
EPA's double
standard

NEWS PG.3



Teacher
of the
week

LIFE PG.5



Anger
on the
ballot

OPINION PG.4

WEATHER

TOMORROW'S OUTLOOK



93
HIGH

69
LOW

Sunshine and clouds
mixed. A stray shower or
thunderstorm is possible.

CONNECT WITH US

@mindenph



specht
NEWSPAPERS, INC.

Vol. 47 No. 55



WEBSTER CRIME

Complaint leads to drug arrest

MICHELLE BATES

michelle@press-herald.com

SAREPTA — A complaint by social services led to the arrest of a Sarepta couple on drug charges after sheriff's deputies were asked to assist in the investigation.

Junice Justin Rogers, 43, of the 500 block of Kings Corner Road in Sarepta, was charged with possession of

Schedule II CDS (methamphetamine), possession of a firearm in the presence of a CDS and possession of drug paraphernalia. Bond was set at \$25,500.

Lindsey Denise Thompson, 33, of the same

address was charged with possession of Schedule II C D S (methamphetamine), possession of a firearm in the presence of a CDS and possession of drug paraphernalia. Bond was set at \$25,560.



ROGERS



THOMPSON

According to the police report, Webster Parish Sheriff's Lt. Shawn K. Baker, Marshal Louie Newton and Springhill Police Chief Will Lynd went with the Department of Social Services regarding a complaint of illegal drug use by the couple in the presence of a minor.

Officers made contact with Rogers and Thompson and noted a three-year-old child inside the residence.

They explained why they were there and asked for consent to search the residence.

Once given consent, the search revealed an undetermined amount of suspected methamphetamine as well as four sets of digital scales, a glass pipe and three handguns.

Rogers and Thompson were placed under arrest and booked at Bayou Dorcheat Correctional Center.

LOUISIANA POLITICS

"I'm one of those guys who never thought they would be in public service, and certainly not for 40 years."

SEN. ROBERT ADLEY

Life after politics

Sen. Robert Adley reflects on political career as it comes to an end

MICHELLE BATES

michelle@press-herald.com

After 40 years of public service, Sen. Robert Adley is stepping out of the political limelight.

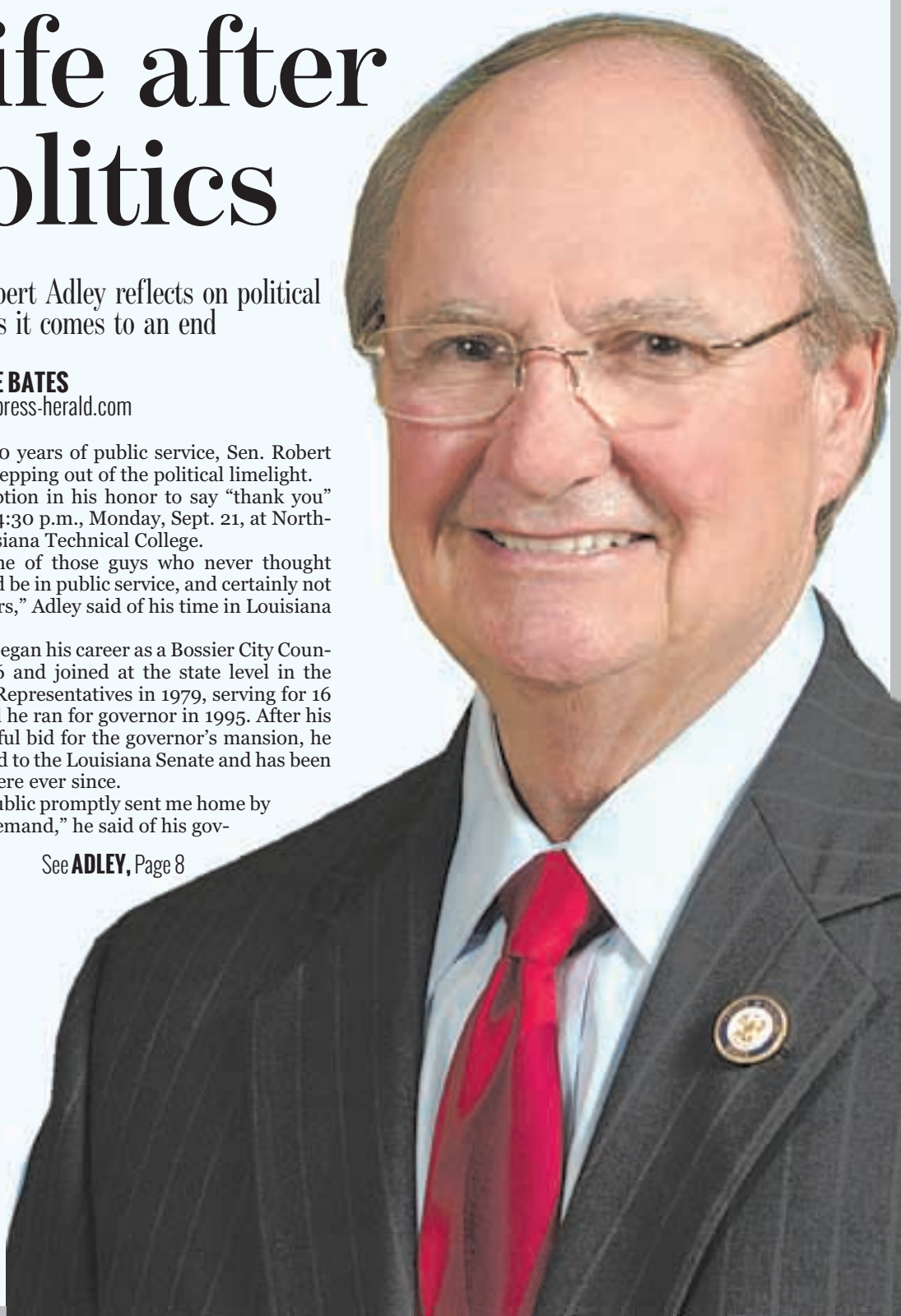
A reception in his honor to say "thank you" will be at 4:30 p.m., Monday, Sept. 21, at Northwest Louisiana Technical College.

"I'm one of those guys who never thought they would be in public service, and certainly not for 40 years," Adley said of his time in Louisiana politics.

Adley began his career as a Bossier City Council in 1976 and joined at the state level in the House of Representatives in 1979, serving for 16 years until he ran for governor in 1995. After his unsuccessful bid for the governor's mansion, he was elected to the Louisiana Senate and has been serving there ever since.

"The public promptly sent me home by popular demand," he said of his gov-

See **ADLEY**, Page 8



Col. William Myer, geologist, explains the studies and results of groundwater samples from Camp Minden. He talked about the geology of Camp Minden and how groundwater flows, as well as history of the military installation's cleanup process dating back to 1978. Michelle Bates/Press-Herald

Camp Minden groundwater safety focus of workshop

MICHELLE BATES

michelle@press-herald.com

DOYLINE — The Environmental Protection Agency hosted a community workshop and open house Thursday to present data to the public regarding Camp Minden's groundwater and give history of the site.

Col. William Myer, chief the environmental programs division of the Army National Guard and geologist, gave a presentation explaining his job and the data collected since the installation assignment to the EPA in 1978 of the Louisiana Army Ammunition Plant to present regarding groundwater and soil.

He says monitoring wells are set up around the perimeter of Camp Minden and throughout the base to monitor any contamination that might come up, and since then

See **WORKSHOP**, Page 8

HEALTHCARE

Flu season, vaccinations arrive in Webster Parish

MICHELLE BATES

michelle@press-herald.com

Two cases of the flu have been confirmed, which means flu season has officially arrived in Webster Parish.

"We've already had two cases of the flu documented this year, so we're already in

flu season," said Dr. Kim Reagan, pediatrician.

Ashley Frye, infection preventionist with Minden Medical Center, says the flu season typically begins around October, although last year it hit the northwest Louisiana region earlier than expected and lasted longer than expected. In 2013-14,

the medical industry missed the mark on flu vaccinations as the H1N1 hit the region with a vengeance.

"The ones (vaccinations) that we are using right now has two strains of A and two strains of B," she said, adding that one strain of A is the H1N1 virus. "They all get treated the same. When it

comes to treating the patient, the type doesn't really matter, because it all gets treated the same."

H1N1 is now considered the seasonal flu, she said. H1N2 was the strain predominant in 2014-15.

The flu season usually goes from October to April or May of the next year, she

says.

She says someone with the flu who is not presenting symptoms will spread it, because they don't know they are sick.

"Let's say you get sick on a Tuesday and you're contagious," she said. "On Mon-

See **FLU**, Page 2

We give you a reason to...

Family Dentistry • New Patients Welcome • Most Insurance Accepted

Same day permanent crowns now available.

ELM STREET DENTAL CENTER

ZACH M. GOODMAN, D.D.S. FRED V. CABANISS, D.D.S.

909 ELM STREET • MINDEN, LA 71055 • 318-377-9411

SECONDFRONT

www.press-herald.com

CHAMBER OF COMMERCE

‘Eggs and Issues’ candidate breakfast is Wednesday

The second “Eggs and Issues” will be at 7 a.m. Wednesday, Sept. 23, at the Minden-South Webster Chamber of Commerce office. The breakfast will be a “candidate forum.” All candidates for local offices are invited to come and participate in the open forum. Tickets are now on sale at the Chamber located at 110 Sibley Road in Minden for \$10. It is open to the public.

CURRENT CANDIDATES ATTENDING

Nick Cox	Police Jury District 8
Harper Edwards	Police Jury District 8
Randy Thomas	Police Jury District 4
Ryan Gatti	Senate District 36
Henry Burns	Senate District 36
Todd Hollenshead	Senate District 36
Tony Davis	BESE District 4
Mary Harris	BESE District 4
Gene Reynolds	State Representative
Morris Guin	Tax Assessor



ECONOMIC DEVELOPMENT IN MINDEN

Economic development director James Graham details his plan on implementing the strategic development plan for the city. Thursday’s meeting was the first of three. The next meeting will be at 6:30 p.m. Sept. 22 at the Community House located at 711 Gladney followed by the last at 6:30 p.m. Sept. 24 at Minden High School. Bruce Franklin/Press-Herald

Flu season is usually from October to spring of the next year

FLU

Continued from page 1

day, you are shedding the flu virus and you don’t even know you are sick. That’s why the flu starts spreading so rapidly. You start shedding that virus, you’re contagious a day before you know you are sick.”

She says the best way to prevent it is to get the flu vaccination.

Hand hygiene is extremely important as well, she said. Washing hands and using hand sanitizer on a regular basis will help hinder the spread of the virus.

While it may be more important for certain groups of people to get the flu shot, like the elderly or those with chronic illnesses, she says everyone needs to get the vaccination.

It is also important for children to be vaccinated as well, Reagan said.

Officials from the Centers for Disease Control and Reagan say the most common symptoms of the flu are fever/chills, sore throat, muscle aches, fatigue, cough, headache and a runny or stuffy nose.

“We usually test for it with a swab and that’s how we know if you have the flu or not,” she said. “If you do have the flu, there’s some medicine we can prescribe called Tamiflu to help decrease the symptoms.”

Children are vaccinated against the flu as young as six months of age she said. If a child is between the age of two and nine, then the child will have to be vaccinated twice the first time. The first dose will be done and then a second dose will be administered approximately four weeks later, she said. If the child is age nine or older, then the first time they are vaccinated only requires one dose.

“Usually we start getting

(vaccinations) in in October,” she said. “There is also a flu mist, which is like a nasal spray. Children over the age of two and don’t have a history of asthma can get that instead of the shot.”

Reagan explained the vaccinations given by injection are a dead virus while the flu mist is a live virus.

If an infant contracts the flu, they can become really sick, she said.

“The younger they are the more likely they are to have

issues with breathing, like when they get runny noses,” she said. “I have seen kids die from the flu and I highly recommend everyone gets their flu shot. Most people don’t get that bad off, but those whose immune system doesn’t work quite right, they can get pretty sick from the flu too.”

The CDC says it takes about two weeks for the protection of the vaccination to take full effect and it lasts through the flu season.



SHOOT FOR THE BLUE

LOUISIANA TROOPER FOUNDATION & LOUISIANA STATE TROOPERS ASSOCIATION

October 10, 2015 at Los Paloma Sporting Range



Thank you!!!

Thank you for making last year’s “Shoot for the Blue”, an overwhelming success. A Sporting Clays Event held at Los Paloma, Benton, LA. With your help Troop G, Louisiana State Troopers Association was able to support and fund our local endeavors. These included improvement of security measures at Troop G, scholarships for local college students, kid’s camps, support of the Northwest Louisiana Veteran’s Home, Christmas gifts for hospitalized children and donations to offset costs for unforeseen medical expenses of Law Enforcement Officers. We would like your help to continue to support these events.

This year’s activities & prizes include: 15 Station Sporting Clays Competition – Opportunity to shoot a Thompson submachine gun – Raffles to include shotguns, rifles and pistols – Lunch catered by Silver Star Steakhouse – Breakfast courtesy of Classic Stone – Various door prizes courtesy of local businesses.

TO BECOME A SPONSOR OR TO MAKE DONATIONS PLEASE GO TO OUR WEBSITE www.shootfortheblue.com or call Lt. Jimmy VanGossen at (318)741-2707 or email Jim.Vangossen@la.gov or mail to 5300 Industrial Dr. Ext., Bossier City, LA 71112

SPONSORS

Willis-Knighton • Yokem Toyota • Fairview Trucking, Inc. • Kilpatrick’s Rose-Neath • Minden Waste Management • Roy O. Martin • Bossier Healthcare Foundation • Woods Operating Company • F.J. Burnell, Inc. Life Air Rescue (Metro Aviation) • Edge Oilfield Services • Republic Services • Servpro of South Shreveport • Schuyler Marvin Bosser D.A. • Exxon Mobil • Caddo D.A. Rex Scott • Shreveport/Bossier New Car Dealers Association Lonestar Baptist Church • W. Clinton Rasberry, Jr. Investments • Baldwin Madden Energy, LLC • Dianne Steen Barnette & Benefield, Inc. • BlueLine Rental • Golf Cars of Louisiana • Curt Thurman • Silver Star • Britt Choate Community Coffee • Music Mountain Water • Coca Cola • Querbes & Nelson • R&V Ironworks • Sid Potts, Inc. Community Bank of Louisiana • Citizens National Bank • XTO Energy Inc. • Webster Parish Sheriff’s Office Chevyland • Baker Hughes • Fire Tech Systems Inc. • SRP Environmental LLC • Cloyce Clark (North LA Backwoods Boys) • Storer Equipment Co. Inc. Provenance Development Co. • Hall Oil Production • Dr. Jeffry H. Scruggs Financial Resources Fuels LLC • Stallion Production Services • Jones Environmental Inc. Custom Control & Design • Armitage • Bulldog Frac Rentals

POLITICS

Fleming criticizes EPA's double standard

WASHINGTON – Congressman John Fleming, M.D. released the following statement after questioning EPA Administrator Gina McCarthy:

“When it comes to cleaning up Camp Minden, or causing the Animas Mine spill in Colorado, EPA plays by a different rulebook than it applies to its victims. When

it came to Camp Minden, EPA was pushing for an open burn process that could put the citizens of Northern Louisiana at risk. EPA refused to certify that that this pro-



FLEMING

posed process was safe, all the while threatening fines for burning a pile of leaves. Fortunately, the community, along with Senator Vitter and I, were able to push back and get EPA to pursue a closed burn process.

“In the case of the Animas River, if a private individual had caused the mine waste spill, they would likely

be in jail. Instead, EPA ‘accepts responsibility’ in the same way the Hillary Clinton accepts responsibility for using a private email server to send classified material. EPA has taken no actions to fire or reduce the pay of any responsible actor.

“If EPA cannot hold itself accountable, and the President will not act, Congress

must act. Upon completion of this Congressional oversight investigation, Congress should insist upon dismissals, severe fines and withholding Congressional funding to hold accountable those responsible.”

Watch Congressman Fleming question EPA Administrator McCarthy online at [www.press-](http://www.press-herald.com)

[herald.com](http://www.press-herald.com).

Dr. John Fleming is Chairman of the Natural Resources Subcommittee on Water, Power and Oceans and is a member of the House Armed Services Committee. He is a physician and small business owner and represents the 4th Congressional District of Louisiana.

ACROSS THE STATE

Jindal announces millions approved for capital outlay projects

STAFF REPORTS

BATON ROUGE – Governor Bobby Jindal announced Thursday that millions of dollars for North Region projects were submitted to the State Bond Commission for recommendation and were approved for funding. These projects include funding for roads and infrastructure improvements across the North Region, as well as several key investments in higher education and health-care projects.

North Region projects submitted to the State Bond Commission

Road and Infrastructure Investments in the North

Region Include:

- \$3 million for improvements to the I-20 interchange and Kansas Garrett connector for Monroe in Ouachita Parish, with an additional \$20 million in new Priority 5 funding for a total of \$23 million in funding.
- \$740,000 for the Rayville Water Service facilities in Richland Parish, with an additional \$6.96 million in new Priority 5 funding for a total of \$7.7 million in funding.
- \$685,000 for street lighting along Highway 71, Phase II, in Bossier City from LA 511 to Parkway High School in Bossier Parish.
- \$500,000 for improve-

ments to the Oil City Water Treatment Plant in Caddo Parish.

- \$415,000 for drainage structure improvements to the Bayou Macon Cut-Off in Franklin Parish.
- \$385,000 for a connection for the Indian Village Water System to the Robinson Chapel Water System and associated improvements in Jackson Parish.
- \$325,000 for road improvements for Town of Benton in Bossier Parish.
- \$300,000 for the expansion of the water distribution system at the Caney Lake Extension in Jackson Parish.
- \$300,000 for the development of an alternative water supply from Lake

D'Arbonne for Lincoln and Union Parishes, with an additional \$2.6 million in new Priority 5 funding for a total of \$2.9 million in funding.

- \$290,000 for improvements to the Cotton Valley Sewerage System in Webster Parish.
- \$210,000 for the reconstruction of Wiles Road and Kountry Korner Road in Caldwell Parish.
- \$145,000 for improvements to the Plain Dealing Wastewater Treatment Plant in Bossier Parish.
- \$135,000 for improvements to the Ida Water System, including water wells, tanks, and booster stations in Caddo Parish.

• \$135,000 for repairs to the sea wall and sewer system at the Grand Bayou Reservoir in Red River Parish.

• \$25,000 for a pump station and force main in Farmersville on Highway 33 South in Union Parish, with an additional \$525,000 in new Priority 5 funding for a total of \$550,000 in funding.

Education, Healthcare, and Other Investments in the North Region Include:

- \$750,000 for the renovation or replacement of Wyly Tower at Louisiana Tech University in Lincoln Parish.
- \$500,000 for emergency water production, transmission and treatment in Madi-

son Parish.

- \$450,000 for Shreveport's C.C. Antoine Park in Caddo Parish.
- \$400,000 for Hannah's Run control structure in Ouachita Parish.
- \$300,000 for park trail sidewalks and restrooms for the Village of Sarepta in Webster Parish.
- \$300,000 for the renovations of the courthouse in West Carroll Parish.
- \$100,000 for the Monroe headquarters of the Office of Wildlife, District 2 in Ouachita Parish.
- \$90,000 for repairs and renovations to the Strand Theatre of Shreveport in Caddo Parish.

Owner: Bonnie and Clyde museum in peril from leaky roof

NEW ORLEANS – The owner of the Bonnie and Clyde Ambush Museum in rural north Louisiana says a leaky roof may force him to move elsewhere – possibly his hometown of Atlanta.

The building in Gibsland once housed the cafe where Clyde Barrow and Bonnie Parker bought sandwiches shortly before the ambush that killed them in Arcadia, about 7 miles away on May

23, 1934.

"The roof's been leaking about eight years. Now it ain't leaking no more – it's just pouring in," said Harry Carver, who bought the exhibits in January from L.J.

"Boots" Hinton, son of the youngest lawman in the ambush.

Carver said Thursday that the building's owner, James Walker of Denver, told him he could patch the roof

instead of paying rent.

"I've spent \$2,300 and there's no patching. It needs a new roof," he said.

Walker did not immediately respond to a call for comment.

Users at tripadvisor.com have listed the museum, under three names, as the first, second and third of four things to do in Gibsland. The

See **MUSEUM**, Page 8

OBITUARIES

Albert “Jack” Morrison

Funeral services for Mr. Albert Morrison will be at noon Saturday, Sept. 19 at Israelite B.C. in Ringgold with the Rev. Huey P. Roberson officiating. Interment will follow at the Israelite Cemetery.

Albert Morrison was born Nov. 20, 1939 to the late James Morrison and the late Inez Robinson Morrison.

He departed this life on Sept. 13 in Ringgold. He was preceded in death by his parents; a brother, Willie Morrison; a sister, Quella Cockerham; and two sons, Truma Fritz and Richard Fritz.

Family left to cherish his precious memory include the love of his life, Mrs. Lissie B. Morrison “Bird”; six sons, Bobby Fritz, Mormon Fritz, David P. Williams, Albert Morrison, of Ringgold, DeMarcus Madison of Monroe, and Edward Madison of Shreveport; two daughters, LaLessa Thomas and Patricia Cockerham of Ringgold; 15 grandchildren; 17 great grandchildren; and a host of other relatives and friends.

Visitation will be from 10 a.m. until 7 p.m. Friday, Sept 18 with family hour from 5 until 7 p.m. in Kennon's Mortuary Chapel.

Email condolences may be sent to kennonsmortuary@sudenlink.net



MORRISON

Linda Miller Shehee

Funeral services for Mrs. Linda Miller Shehee will be at noon Saturday, Sept. 19, at Carter Memorial B.C. with the Rev. John Fincher officiating. Interment will follow at Theus Cemetery.

Linda Miller Shehee was born to the late John Miller and Emily Lowery Miller. She was a 1983 graduate of Minden High School. She continued her educational pursuits and became a phlebotomist. She was employed by Minden Medical Center.

She departed this earthly life on Sept. 8 in Shreveport.

Linda leaves to cherish her precious memories her husband, Edward Shehee Sr.; her parents John and Emily Miller; two sons, Edward Shehee Jr. (Keisha) and Leroski Miller; a daughter, Crotisha Miller of Houston; 13 grandchildren; three brothers, John Miller Jr., Michael Miller, and Stafford Miller; and two sisters, Shirley James and Barbara Washington; and a host of aunts, uncles, paternal brothers and sisters, other relatives and friends.

Visitation will be from 10 a.m. until 7 p.m. Friday, September 18 in Kennon's Mortuary Chapel.

Email condolences may be sent to kennonsmortuary@sudenlink.net



SHEHEE

Douglas Louise Warren

Douglas Louise Lunsford Warren passed away peacefully in the loving arms of friends and family on Wednesday, Sept. 16, 2015. She was 94 years old. Douglas or “Duttie”, as she was known to her family, worked as a nurse at Highland Clinic in Shreveport for 44 years. She was married to Frank Warren for 40 years until his death in 1986. One of 10 children, Douglas was born May 21, 1921 in Minden and raised on a dairy farm in Minden. Her parents were Lula Mae Moreland and Douglas Durwood Lunsford.

Douglas is survived by her daughter, Patricia Warren Snapp; her son-in-law, Douglas Snapp; and her two grandchildren, Rebecca and Joshua Snapp who live in Minnesota. Her sister, Nellie Martin, still resides in Minden.

Graveside services will be at 2 p.m. Sunday, Sept. 20, 2015 at Gardens of Memory in Minden with the Rev. Brian Mercer officiating. The family will receive friends from 11 a.m. Sunday until service time.



Wills Successions

Rick Warren

Attorney at Law

219 Main Street • Minden, LA • 377-8150



Michelle Barr

ISSO Certified Instructor/Judge

BHS Stage 11

PATH Registered Instructor

(225) 964-7222

Michelle@rightlead.com

www.rightlead.com

17237 Hwy 80 East

Minden, LA 71055

BIRTHDAYS FOR

FRIDAY, SEPTEMBER 18, 2015

Morris Jackson III • La'Tanjoreia Smith

Cherry Rhodes • Delphine Phenix

SATURDAY, SEPTEMBER 19, 2015


Gloria Green • Billy Flournoy • Ganny Green • George Brewer

SUNDAY, SEPTEMBER 20, 2015

Patricia Stone • Pat Bell • Ronnisha Reaner • Pete Williams

HAPPY BIRTHDAY





I am Vera Benton

Darison, Police Juror

representing District 10

and Vice President of

the Jury.

I would like to thank the citizens of District 10 for allowing me to represent them for another term. I have served three terms and I have only missed one meeting date and never missed a called meeting. I am always here for you and if you need assistance or if you have a question, please call me. If I am away from the phone, leave me a message and I will return your call.

I believe in Webster Parish and thank you for believing in me.

Thank You

On behalf of the family of Luke Shepherd, we would like to thank everyone that came by, sent a card, a flower, or a dish or said a prayer. We certainly felt the love from everyone. Our dad and husband will certainly be missed but every one of you have made this transition a little easier for us. “Big Daddy” as everyone called him loved people and you all certainly showed us that he was truly loved back. There was such an out pouring of support for us that we do not want to miss thanking each and every one of you for all your efforts.

The Family of Luke Shepherd

AKA Big Daddy

EPIC Hoarder's Barn Sale

Who: Karla Loftin, The Epio Hoarder and other junkers

When: October 10, 2015

8am to 4pm

Where: Loftin Barn

284 Fowler Rd.

Doyline, LA

Antiques

Pure Junk

Old Furniture

New Furniture

Christmas Decor

Pig Collection

Ecclectic Junk

Funky Junk

Household

Karla Loftin

@KarlaLoftin

OPINION

www.press-herald.com

PERSPECTIVE

Prayer changes things

Alfred Lord Tennyson said "more things are wrought by prayer than this world dreams of."

A friend recalled that her alcoholic father overheard his wife praying out loud, not realizing that he had just walked into the door late at night. She pleaded "you have got to help me or I am going to have to leave my husband because all of our grocery money is being spent on alcohol."

The husband was so overwhelmed by his wife's prayer that he immediately stopped drinking and never touched another drop.

Shortly thereafter, his wife placed a plaque in their living room that read: "prayer changes things."

From the backwoods of Arkansas, before going into an orphanage, to today, God has had His hand on my life whether I deserved it or not, pulling me out of tight places that would have destroyed me had He not rescued me.

I have so many stories that just keep coming to me that I've never written about. I must get right on it!

We are told in Matthew 6:6 "But thou, when thou prayest, enter into thy closet, and when thou hast shut thy door, pray to thy Father which is in secret; and thy Father which seeth in secret shall reward thee openly."

Prayer works! He has never left me stranded. Some of my experiences are too personal to write about.

As though waiting in the wings -- answers came out of the blue!

We all feel vulnerable and hesitate to share our secrets and our deepest fears -- yet it's in being open, we reach out and give others hope.

People have to know we care, that we are not just reaching out because we are on some paid staff. Caring comes across in so many ways, whether we know it or not.

We can't fake caring. Having witnessed floods on every hand across the nation, and around the world, I can't help but wonder how many prayers have been uttered behind closed doors or did we just run for our pumps and sand bags to protect our homes while we listened to the weather channel. Do we put our trust in Him or in our ability to make it on our own?

The truth is we can't make it without His help.

I believe that God demands us to acknowledge Him for who He is -- our creator -- our protector, -- the God of our lives -- and not in some pious -- holier than thou art way.

He made us for Himself and He will get us to the right place at the right time.

Sarah Hudson Pierce is a syndicated columnist who lives near Mooringsport

Share
your
thoughts.

Email Letters to the Editor to
bruce@press-herald.com.

MINDEN PRESS-HERALD

203 GLEASON STREET, MINDEN, LOUISIANA 71055
318-377-1866 • www.press-herald.com

USPS NUMBER 593-340

DAVID A. SPECHT JR., *President*

GREGG PARKS, *Publisher*
gparks@press-herald.com

CAROL ANDREWS, *Chief Financial Officer*
carol@press-herald.com

BRUCE FRANKLIN, *Managing Editor*
bruce@press-herald.com

BLAKE BRANCH, *Sports*
blake@press-herald.com

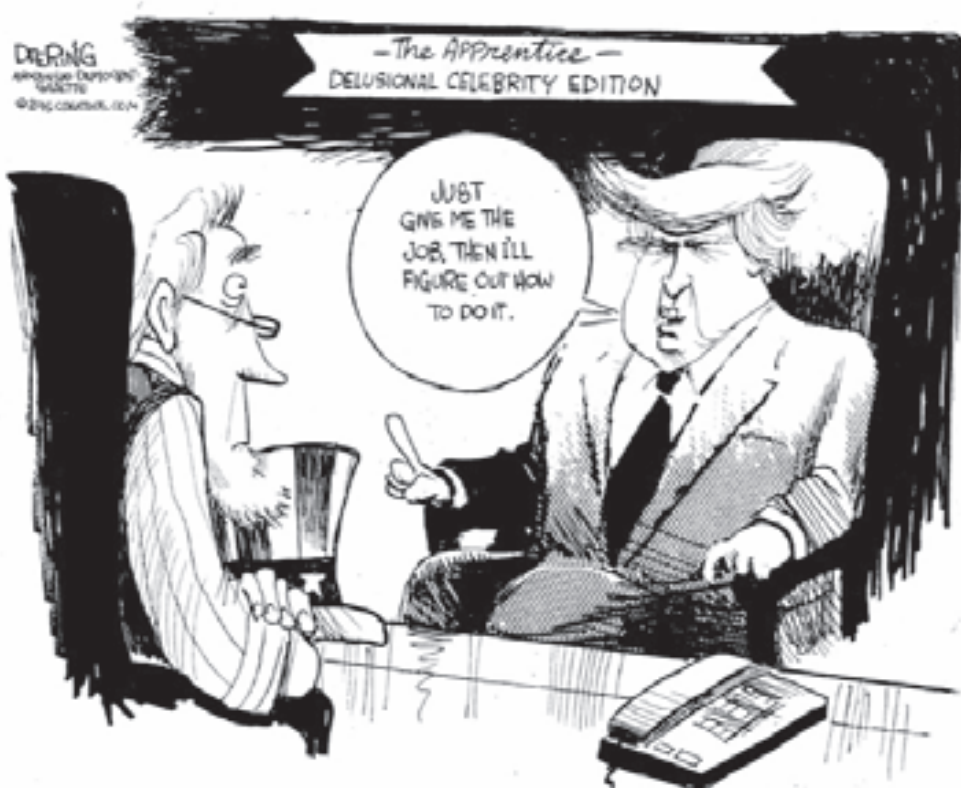
JORDAN WILSON, *Community Editor*
community@press-herald.com

TELINA WORLEY, *Advertising Manager*
advertising@press-herald.com

PETE COVINGTON, *Circulation Manager*
circulation@press-herald.com

DENNIS PHILBAR, *Production Director*
production@press-herald.com

The Minden Press-Herald is published Monday through Friday afternoon by Specht Newspapers, Inc. at 203 Gleason Street, Minden, Louisiana 71055. Telephone 377-1866. Entered as Periodicals at the Post Office as Minden Press-Herald, P.O. Box 1339, Minden LA 71058-1339. Subscription rate: In-parish home delivery \$11 per month; \$33 per three months; \$66 per six months; \$99 per nine months and \$132 per year. Out-of-parish mail delivery is \$14.50 per month; \$43.50 per three months; \$87 per six months; \$130.50 per nine months and \$174 per year. POSTMASTER: Send address changes to Minden Press-Herald, P.O. Box 1339, Minden, LA 71058-1339.



EDITORIAL ROUNDUP

The Courier on spending money from the BP oil spill settlement on marsh projects

Lafourche Parish is planning to use the \$1.3 million it will get from the BP Deepwater Horizon oil spill settlement to build a series of marsh-creation projects.

The parish has a multi-year plan (that) sets out how it will spend the oil spill money, and it has laid out a good guide for spending it on projects that will build marsh and thereby protect property and lives.

These projects will adopt several strategies, but the goal is the same: Build land along a coast that is in peril.

To that end, the parish is planning to move freshwater and sediment into area marshes, approaches that are endorsed by environmental experts as efficient ways to restore ground that has been lost to erosion.

The particular attraction of these projects is that they can be undertaken for relatively little money. The parish, for instance, is embarking on a handful of them with the BP money and hopes to build tens of thousands of acres of marsh.

That is a good return on

the investment, and it allows individual areas to press ahead with restoration initiatives without waiting on the integrated, coast-wide approach that is truly needed.

The good these projects can do is not limited to the immediate areas where they are located.

The collective good of all these projects across the coast is a recovering coastline that eventually can begin to recover from the decades of neglect that have seen it suffer some of the most rapid land loss in the world.

Even better, each project that is built gives added protection from future storms and helps stem the tide of loss.

Mother Nature once provided us with natural protections from hurricanes, lesser storms and tidal actions.

Leveeing off our rivers, though, cut off our marshes and barrier islands from the freshwater and sediment the rivers once delivered in abundance every time they flooded.

Now, for us to recover

some of the benefits of the freshwater and sediment, we have to do it with pipelines and diversions. The downside is that moving water and soil can be an arduous process that requires engineering and planning and substantial investment. The upside is that these projects are not nearly as expensive as larger restoration projects. That means they can be done as time and money allow.

The current projects are proof of that.

They aren't huge projects, but they are the projects we can afford, and they will offer significant coastal restoration.

That, for now, is the best we can hope for from our public coastal projects.

Ideally, we would have the money available to allow the parish and the state to plan, design and build all the projects they have on the books. Short of that, we have to do what we can with what we have, and the parish is doing just that.

PERSPECTIVE

Anger on the ballot

There were a couple of very clear winners at Wednesday night's Republican debate. One was Carly Fiorina, who certainly proved she is more than ready for prime time. Because of CNN's selection process, Fiorina almost didn't make it to the main event in California. But in many ways she dominated the debate, and she unquestionably has dominated the post-debate analysis.

Even our perspicacious and professorial Charles Krauthammer, a notoriously tough grader, gave Fiorina an 'A.' Then, Charles being Charles, he felt compelled to lower that to an 'A-minus.'

The other big winner, aside from the always articulate and well-informed Marco Rubio, was not actually a candidate. It was an emotion - anger.

One of the night's most stirring moments came when Fiorina and anger coalesced. Speaking about Planned Parenthood's gruesome practices, Fiorina displayed sheer indignation, demanding a bill to end federal funding for the abortion provider.

Her take on Planned Parenthood has been the most talked-about sound bite of the debate, with the possible exception of Fiorina's response to Donald Trump's comments about her looks. That reply was also laced with righteous anger,

which was primarily evident not in Fiorina's verbiage, but her visage.

Then there was normally amiable Jeb Bush, who angrily defended his brother, saying, "He kept us safe!" Marco Rubio was livid when criticizing the nuke deal with Iran, Chris Christie seemed ticked off while talking about terrorism, Rand Paul was peeved when pontificating on America's role in the world, and Mike Huckabee grew enraged when the subject turned to religious liberty. Meanwhile, Donald Trump often seemed irate, perfectly understandable considering he was under attack all night long.

The more amiable candidates in the GOP field - notably Ben Carson, Scott Walker, and John Kasich - had a harder time breaking through at the Reagan Library. Not on a night when anger was front and center.

On the Democratic side, Bernie Sanders has been soaring in the polls because he has also tapped into a widespread sense of anger among millions of Americans. And, really, who can blame the folks?

Barack Obama promised to bring the country together, but he has been one of the most divisive presidents in history. His signature domestic achievement was rammed through with absolutely no support from Republicans, while the recent deal with Iran has zero support among the GOP and very little backing from the American people.

The economy is stagnant, with wages for working men and women on the decline. Religious Americans feel under siege. President Obama has strengthened secular groups who are hell-bent on destroying traditional American values, especially those in the Judeo-Christian tradition. Meanwhile, the country seems to be more impotent than ever overseas and the world is in chaos.

Given this bleak landscape, conventional candidates have no answers for the citizen fury. Trump, Fiorina, and Sanders currently own the stage and the curtain is not even close to coming down. They are ascendant because they have tapped into the anger of many voters who believe they are being abused and manipulated by craven politicians.

Meanwhile, we have a president who seems totally disengaged, even delusional. The day before the Republican debate, Barack Obama said something fairly remarkable. "America's winning right now," he boasted.

Winning? Mr. President, many millions of people simply don't agree with that assessment. Just ask Donald Trump, Carly Fiorina, and Bernie Sanders.

Bill O'Reilly is a talk show host on Fox News. His column runs on Friday in the Minden Press-Herald.



BILL O'REILLY



Give us your
two cents!

Send your Letter to the Editor to
bruce@press-herald.com.

Around Town

September 18, 2015

Richland State Bank will sponsor an American Cancer Society Relay for Life Fundraiser from 10 a.m. until 2 p.m. Hamburger plates with all the trimmings will be available with a \$7 donation. Delivery will be available.

September 19, 2015

Full Deliverance Church will have "An Evening of Gospel" at 6 p.m. Guests will include the Canton Southernairs and the Amos Brothers. For more information contact Pastor Brown at 318-268-1251.

September 19 - 20, 2015

House of Prayer Outreach Ministries will have a "Prophetic Youth-Conference" nightly at 7 p.m. Guest speaker Sept. 19 will be Devante Crutchfield and guest speaker Sept. 20 will be Christian Jordan.

Minden Church of Christ's youth group will have a car wash at 9 a.m. outside of Advance Auto Parts on Homer Road. All proceeds will benefit the American Cancer Society Relay For Life.

September 20, 2015

Blue Run Baptist Church will have a Family and Friends Day program at 3 p.m. with special guest the Rev. Calvin Williams. All churches are invited.

Annual Choir Day at Pleasant Valley Baptist Church will be at 3 p.m. with special guest Pastor Willie McGee.

Pilgrim Rest Baptist Church's Annual Homecoming will be at 2:30 p.m. with guest speaker the Rev. Robert White.

September 21 - 23, 2015

Pilgrim Rest Baptist Church's Annual Revival will be at 7 p.m. nightly with guest speaker the Rev. Kenneth Jenkins.

The family of Freddie Gavin is asking for your prayers and donations to help with medical expenses. Freddie is a resident of the Couchwood community in the Cotton Valley area. He has been diagnosed with stage 4 congestive heart failure and is in desperate need of a heart transplant. In an effort to raise funds to provide medical treatment at Baylor Hospital in Dallas, accounts are currently opened at Carter Federal Credit, Regions Banks and a gofundme.com account.
Carter Federal Account # 39150901 - Regions Bank Account # 0218333311

Minden Farm & Garden
1307 Sibley Road • Minden, LA • 371-0010

*Minden Press Herald and
Minden Farm & Garden's*

TEACHER OF THE WEEK

Congratulations to Minden High School's Kelli Carter. She is this week's MPH/Minden Farm & Garden's Teacher of the Week. Kelli is a MHS Alum that obtained a Master of Arts in Teaching at Grambling State University. Kelli teaches 9th grade math at Minden High

The Press-Herald's Teacher of the Week feature is brought to you every other Friday by Minden Farm & Garden.

Lunch Menu

Monday, September 21

Ham/Cheeseburger, French Fries, Sandwich Fixings, Carrot Sticks, Pineapple Chunks, Brownie, Milk

Tuesday, September 22

Chicken Sausage Gumbo, Steak Rice, WK Corn, Cantaloupe, Crackers, Milk

Wednesday, September 23

Beef Steak Fingers, Mashed Potatoes, Green Beans, Carrots, Fruit Cocktail, Rolls, Milk

Thursday, September 24

Beef Taco, Whole Kernal Corn, Cinnamon Rolls, Taco Salad Cup, Peaches, Milk

Friday, September 25

Chicken Tetrizzini, Green Beans, Popeye Salad, Apples/Orange Wedges, Rolls, Milk

*Share your events
with the community.
Send your events to
community@press-herald.com,
fax them to 377-1866,
over the phone by
calling 377-1866 or in person
at our offices located at 203
Gleason St. in Minden*

WEBSTER PARISH FAIR



*Your ticket to
good times!*

**\$1
GATE FEE and
\$1 RIDES
TUESDAY
ONLY!**

**GATE
ENTRANCE
FEE:
\$2 Rest
of Week**

DAILY EVENTS

TUESDAY, OCTOBER 6

Fair Parade Downtown Minden - 5:00 P.M.
Fair Gates Open - 5:00 P.M.
Livestock Weigh-In - 5:00 P.M.
Poultry and Rabbit Show - 6:00 P.M.
Live Entertainment - **Char-Ray Kareoke** - 6:00 P.M.

WEDNESDAY, OCTOBER 7

Special Kids Day! 9:00 A.M. – 12:00 P.M. (Armory Building)
Fair Gates Open - 5:00 P.M. "Armband Night"
4-H Swine Showmanship - 6:00 P.M.
Then Swine Weight Classes (Livestock Arena)
Live Entertainment - **Stormy Weather Band** - 7:00 P.M.

THURSDAY, OCTOBER 8

Senior Citizen Day 9:00 A.M. – 1:30 P.M.
Fair Gates Open - 5:00 P.M.
Armband Night - \$1 Off with 2 Canned Goods
Dress Your Pet Costume Contest - 5:30 P.M. (4-H Barn)
4-H Pee Wee Pig Show - 6:00 P.M.
4-H Leaders/Principals Pig Pusher - 6:00 P.M. (Livestock Arena)
4-H Goat, Lamb, Beef & Dairy and Doug Sale Showmanship-7:00 P.M.
Live Entertainment - **Dorcheat Bottom Band** - 7:00 P.M.

FRIDAY, OCTOBER 9

Buyer's Luncheon - 11:30 A.M.
Livestock Auction - 1:00 P.M. (Armory Building)
Fair Gates Open - 5:00 P.M.
Live Entertainment - **Hard Times Band** - 7:00 P.M.

SATURDAY, OCTOBER 10

Fair Gates Open - 12:00 P.M.
Live Entertainment - **Char-Ray Kareoke** - 1:00 - 5:00
4-H Talent Show - 10:00 A.M.
Kids Day! 1:00 – 5:00 P.M. 5 Rides for \$5.00
Pizza Eating Contest - 2:00 P.M.
Live Entertainment - 7:00 P.M.



WEBSTER PARISH FAIR PARADE

DATE: Tuesday, October 6, 2015

START TIME: 5:00 P.M.

LINE UP: 3:00 P.M.

NAME OF GROUP: _____

NAME OF SPONSOR (IF ANY): _____

ADDRESS: _____

TELEPHONE: _____

APPROX. NUMBER OF PEOPLE IN GROUP: _____

DESIGNATE:

DRILL TEAM

FLOAT

BAND

MARCHING GROUP

AUTO OR TRUCK

SEND ENTRIES BY SEPTEMBER 26, 2015

MAIL TO: TG COMPANIES, LLC
456 HWY 531
MINDEN, LA 71055

INFORMATION: DONNIE IRBY
PHONE: 377-6250
FAX: 377-4769

****NOTE****

The parade's pace will be slow enough for your group to perform routines. Therefore, when the parade is started there will be no stopping of any group. A close interval must be maintained at all times. If any group can not comply with this request you will not be allowed to participate in any future fair parades. If planning on having throws you must have walkers on each side of float for crowd control. If parade is stopped, then you must stop giving out throws until float is moving. Thank you for your cooperation.



SPORTS

 www.press-herald.com

HIGH SCHOOL FOOTBALL

Apaches looking for leaders



BLAKE BRANCH
blake@press-herald.com

It hasn't been the start Glenbrook coaches, players or fans were hoping for.

At 0-4, the Apaches are behind the eight ball in their quest to post a 14 straight winning or .500 season. It appears the Apaches will need a miracle to keep the streak alive, or maybe, just some leadership.

"Tuesday we had an absolutely terrible practice," Apache head coach Caleb Carmikle said. "We sat the guys down and laid it out there, that it's going to be a really long season if we don't turn it around right now. We elected official team captains and all the coaches spoke with those captains about what we expect from them in terms of leadership, because that's really what this team is missing right now."

Carmikle said the team chose seniors, Archer Moses, Garrett Sanders, Drennan Keen and Lyle Reagan as captains for the remainder of the season, and praised the efforts of the foursome up to this point.

"Drennan is just a different kind of kid, Carmikle said. "He's had a nagging injury since the start of the season and I hate it for him. He's someone the kids look up to, someone who brings it everyday in practice.

Archer Moses is the vocal leader of our team both on the field and in the locker room. He gives all he has every day in practice and I'm proud of the way he's handled himself."

Carmikle praised Sanders for leading by example on the field so far this season, and Reagan for playing through injury.

"We've talked with them

about laying the foundation," Carmikle said. "They're laying out the future for our program. If you don't build a solid foundation the house will crumble."

Carmikle said the team responded positively, rebounding with the best practice of the season on Wednesday.

"Hopefully this was a turning point for us," Carmikle said. "Obviously we still have a steep challenge with Riverfield. They're huge up front and they have a huge running back. They're just going to hand it to him and let him do his thing."

It starts up front for the Apaches with the running game. Offense has been hard to come by for Glenbrook, and this week's opponent isn't the type of team to allow the Apaches to find a rhythm, despite giving up 61 points to Trinity Episcopal last week.

"Their defensive line gets after it," Carmikle said. "They like to send linebackers up the middle and bring six-man pressure. Our running backs will be extremely involved in pass protection this week. In the passing game, our receivers just have to catch the football. We had nine drops last week, so it's time to start making plays."

The Apaches will be without a pair of starters for this week's contest, Hunter Chopin and Da'Maza Robinson.

"We're a little banged up," Carmikle said. "It's just little nick-nack issues throughout the grind of the season. Of course it hurts you on Friday night, but it hurts us worse throughout the week of practice. With low numbers we need everybody available for scout team reps, but on the flip side we're as healthy on the offensive line as we've been all season. Hopefully we can see more production this week on offense behind a healthy group of offensive linemen."

The Apaches and Raiders will kick things off at 7 p.m. from Apache Stadium.



Glenbrook quarterback Hunter Vaughn delivers a pass in last week's game against Prairie View Academy. The Apaches will need a big game from Vaughn and his receivers to knock off Riverfield Academy at Apache Stadium Friday night. Courtesy Photo/Braxton Stuckey

FOOTBALL EXPERTS PICK 'EM



This week's games

Minden vs N. Webster
Glenbrook vs. Riverfield
Lakeside vs Grambling
LSU vs. Auburn
LaTech vs. Kansas State
Georgia vs. S. Carolina
Texas Tech vs. Arkansas
Ole Miss vs. Alabama
Ga Tech vs. Notre Dame
Florida vs. Kentucky
49ers vs. Steelers
Patriots vs. Bills
Chargers vs. Bengals
Seahawks vs. Packers
Saints vs. Bucs
Cowboys vs. Eagles
Last week
Overall



Zach Specht

Minden
Riverfield
Grambling
LSU
Kansas State
Georgia
Texas Tech
Alabama
Notre Dame
Florida
49ers
Patriots
Chargers
Seahawks
Saints
Eagles
9-7
25-7



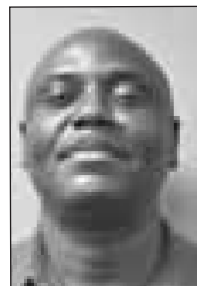
Gregg Parks

Minden
Riverfield
Lakeside
LSU
Kansas State
Georgia
Arkansas
Alabama
Notre Dame
Florida
Steelers
Bills
Chargers
Packers
Saints
Cowboys
11-5
25-7



Blake Branch

Minden
Riverfield
Grambling
LSU
Kansas State
Georgia
Arkansas
Ole Miss
Ga Tech
Florida
Steelers
Patriots
Bengals
Packers
Saints
Eagles
11-5
23-9



Louis Mitchell

Minden
Riverfield
Grambling
LSU
Kansas State
Georgia
Texas Tech
Ole Miss
Notre Dame
Kentucky
49ers
Patriots
Bengals
Packers
Saints
Cowboys
8-8
22-10



Curtis Mays

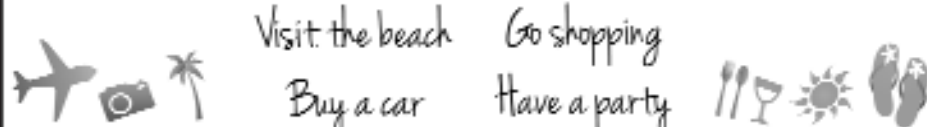
Minden
Riverfield
Grambling
LSU
Kansas State
Georgia
Arkansas
Alabama
Georgia Tech
Kentucky
Steelers
Patriots
Bengals
Seahawks
Saints
Eagles
10-6
21-11



Pete Covington

Minden
Riverfield
Grambling
LSU
Kansas State
S. Carolina
Arkansas
Alabama
Georgia Tech
Florida
Steelers
Patriots
Chargers
Seahawks
Saints
Cowboys
9-7
19-13

What could you do with the amazing savings from Webster Printing?



Let us handle
your paperwork!

WPC

WEBSTER PRINTING COMPANY
716 BROADWAY • MINDEN, LA 71055
P: (318) 377-8518 • F: (318) 377-8530
WEBSTERPRINTING@SUDDENLINK.NET

HIGH SCHOOL FOOTBALL

Knights ready and willing to take on Tide



BLAKE BRANCH
blake@press-herald.com

SPRINGHILL - North Webster head coach John Ware speaks for most of the parish when he talks about how excited he is for Friday's Webster Parish showdown between his Knights and the visiting Minden Crimson Tide.

"There's no reason this game should have ever stopped," Ware said. "No doubt, it's definitely a game the parish needs between these two good football teams. We're excited about it."

Ware said he can't tell if his players are treating this game any different than the next, noting the

preparation has been quiet and crisp.

"We don't get too hyped up in practice," Ware said. "We'll let that come out on Friday, but it's obviously a big game and we understand the significance of it."

The Knights will have the luxury of homefield advantage, a place where North Webster has been nearly unstoppable. Just ask Patterson High School how hard it is to win in Springhill. The Lumberjacks watched as the Knights erased a 20-point fourth quarter deficit last year in the playoffs, so the Tide have their work cut out for them.

"We've been on the road three weeks in a row," Ware said. "I don't know how much of an advantage it will be. After about one quarter, football takes over. It will be a huge crowd and a great night for football in Webster Parish."

Ware was very complementary of the Minden team and coaching staff.

"Minden is a tough team," Ware said. "They put a lot of pressure on you and they're well-coached. It's one of those things

where you have to prepare correctly and be disciplined. Our guys have been doing a good job of that in practice."

Ware said the matchup that could have the biggest role in determining a winner will be the Minden passing game against a North Webster secondary comprised of mostly newcomers.

"They can hurt you there," Ware said. "They do a lot of play action stuff and put you in a lot of different formations that make it tough to line up against."

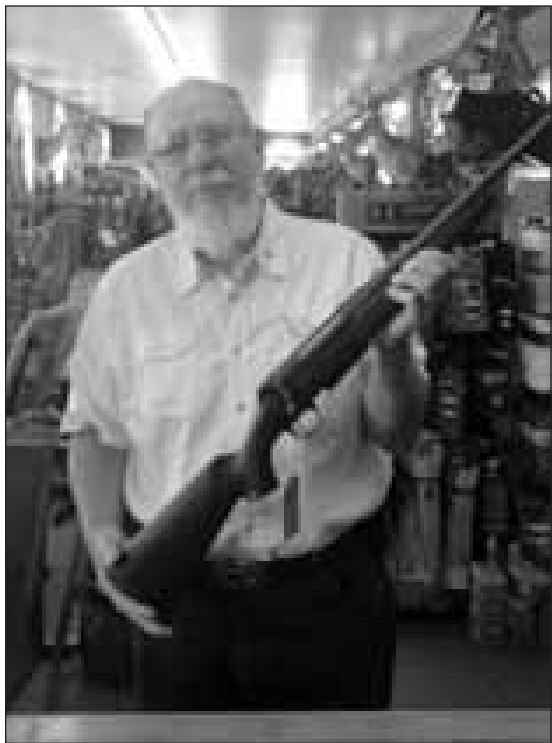
North Webster's offense will counter with a heavy dose of runs with Devin White and Jalen Smith, but don't sleep on the Cameron Huff to Wesley Franklin connection that has been good for the Knights' passing game so far this season.

"Their defense puts a lot of pressure on you," Ware said. "They attack and are always in good position. We have to take care of our business because I'm really impressed with their defense; they get after it."

The battle for Webster Parish bragging rights begins at 7 p.m. in Springhill.



Courtesy Photo/Lori Hughes



Glenbrook Hunter's Super Raffle

Congratulations to last week's big winners in the Glenbrook Hunter's Weekly Super Raffle. Left, Randy Clemons poses with the Remington 870 Youth 20 GA Shotgun won by Steve Lemmons in the Wednesday (9/9) drawing, with winning numbers 741. Right, Jim Frazier of Minden poses with the Browning A Bolt III Bolt Action Rifle he won in the Saturday (9/12) drawing. His winning numbers were 588. The Glenbrook Super Raffle is sponsored by Rockin' Rooster and Michael's Men's Store and Sporting Goods in Homer. Courtesy Photos

with the
Minden Press-Herald
&
YOUR AUGUST ELECTRIC
BILL COULD BE FREE!

Subscribe or renew your subscription to the Minden Press-Herald for 3 months or more and you will have a chance to have your August electricity bill paid by us (up to \$500).
It's that easy!

The name of one lucky subscriber will be drawn on Friday, September 18, 2015 at 4:00 p.m. The subscriptions are for home delivery only. You must pay for your subscription before the day of the drawing to win.

FREE ELECTRIC BILL	Home Delivery Prices:	<input type="checkbox"/> 3 Months	<input type="checkbox"/> 6 Months	<input type="checkbox"/> 1 Year
		\$33.00	\$66.00	\$132.00
		<input type="checkbox"/> New Subscriber <input type="checkbox"/> Renewal		
	Name: _____			
Address: _____				
City: _____ State: _____ Zip: _____ Tel. No. _____				
MINDEN PRESS-HERALD 377-1866				
203 Gleason St. Minden, LA 71055 P.O. Box 1389 Minden, LA 71058				

MINDEN PRESS-HERALD
203 Gleason Street
Minden, LA • 377-1866

New Subscribers, Subscription Renewals & Private Residents Only.
Home delivery only. Payment must be mailed with coupon, or brought by our office.
Minden Press-Herald employees or immediate family members are not eligible.

1-20 & Sibley Road
Minden, LA
318-377-8694
www.hebertsford.com

2014 Ford Escape
One Owner, Rear Camera

Only 31K Miles! **\$15,000⁰⁰**

2011 Ford Expedition
Leather, Power Liftgate, Rear Camera

Only 65K Miles! **\$23,500⁰⁰**

WEBSTER & MORE

 www.press-herald.com

ADLEY

Continued from page 1

ernor's bid. "Then the senate seat came open and I thought I'd never go back – but I did. I have thoroughly enjoyed it. It has been a real honor. The people I have represented have been wonderful and they have been great people to represent."

He says he feels much has been accomplished, particularly in this area, with the new technical school, the new Webster Council on Aging facility, among many other projects in Cotton Valley, Springhill, Sarepta, Ringgold, all over the district. However, there was one bill that he will never forget, he says.

"I had a really good friend," he said. "He was a small business guy, and he had two or three employees in the oil and gas business. He got terminal cancer. He left the hospital and came to my office – and I mean he looked terrible – and he was so mad. The insurance company had cancelled his insurance while he was lying on his death bed."

In Louisiana at that time, Adley recalled, health insurance companies could do that.

"He said, 'You have to change this,'" he said. "He

died, and in his name I came to Baton Rouge and passed it off the House floor, and it wasn't any problem."

It hit the Senate committee and it was killed.

"I was sitting at the witness table, and I said, 'No, you're not through,'" he recalled. "I'm not going to get up from this table until you pass this bill."

He says they threatened to call security and the authorities to physically remove him from the room, and he told them he'd "scream and holler" about what the Senate committee had done until the entire state had heard it. The chairman adjourned the meeting and asked if Adley would meet with them in side chambers about what they could do. A few adjustments were made and the bill soon after became law.

He talked about the bill that taught him the most, he says. It was a two-year fight over regulations regarding horse racing. Every race track in Louisiana had a certain amount of race days and Louisiana Downs had less, he says. He introduced a bill to correct that issue and it met vehement opposition.

"I didn't think it was going to be a problem, but it turned out to be a gosh-awful fight," he said.

Adley says he has served under every governor since Dave Treen, including the

governor he lost his bid against, Mike Foster.

"I've met tons of wonderful people all over the state and all over the world," he said. "The difficult part, the part that I hate the most, is that if you're not somewhat wealthy, you just can't afford to serve. And I hate that. I wish there was some way that the average guy could go down there and experience that."

Beginning in the oil and gas field in his 20s, he's spent his entire business career in the industry, and has made a decent living, he said. Once he retires, he says he will probably remain in the industry, although not quite as heavily.

"Since the last session has ended, outside of the oil and gas consulting, we're on the verge of full retirement, and I'm trying to get used to that," he said. "You have to stay involved, and in our case, we have a lot invested in Louisiana – and I don't mean money, I mean time and effort and love."

He's been married to his wife, Claudia, for 25 years, and he has one son, Dr. Brandon Adley, DVM, and one grandchild. He reiterated that he is everything Louisiana and he will now be able to spend more time rooting for his favorite home team, the LSU Tigers.

On his last day on the Senate floor, he was giving



Dist. 10 Rep. Gene Reynolds, left, and Dist. 36 Sen. Robert Adley discuss the state budget before the 2013 Legislature. Courtesy Photo

his closing speech, and he said in part, "I heard a preacher say when you have an extramarital affair, you ought to admit it and admit it publicly, so today on this

floor in the Senate – with my wife sitting in the back of the chamber – I said, 'I'm going to admit to you that I've had an extramarital affair, and let me tell you her name. Her

name is Louisiana. I just fell in love with her, and I always have been in love with Louisiana."

MUSEUM

Continued from page 1

ambush marker in Arcadia is listed fourth.

The museum's exhibits include a strongbox and flashlight taken from Barrow's car, newspaper articles about Bonnie and Clyde, bul-

lets from other sites they robbed, and a 1934 Ford V-8 with decals to represent bullet holes.

Barrow's car, the shirt he was wearing and other memorabilia are at Whiskey Pete's Casino in Primm, Nevada; the casino paid \$85,000 just for the shirt.

A Minden resident had lent the museum a shotgun

"taken out of the death car," but has reclaimed it because of the roof problems, Carver said. "He said once we've got everything squared up, he'll bring it back."

The building also houses a food bank.

Carver said Walker offered to sell the part that holds the museum for \$40,000 and put another

\$10,000 into roof repairs.

"It's one roof that covers it all. The whole roof needs to be re-covered," Carver said. He estimated that a new roof would cost \$18,000 to \$20,000.

He said he has offered to buy the whole building for \$20,000 and put the same amount into a new roof.

"Then I'm committed to

Gibbsland for \$40,000. That's a lot of money to invest in a town that has nothing but the museum," he said.

If he had a suitable building, he said, he'd like to add two businesses: Bonnie's Boutique and Bonnie and Clyde's Sandwich Shop.

"I'm at my wits end," he said. "I left six kids, my mom and grandkids in Atlanta to

come over and do this. I didn't come here for this headache. I will pack it up and move back to Atlanta."

"It's not what I want to do," he added. But he said he's had two heart attacks and is currently on medication for anxiety.

"I've stopped ordering everything, my souvenirs and everything," he said.

WORKSHOP

Continued from page 1

cleanup of the so called "red water ponds," after its designation as a Superfund site, the damage to soil and groundwater have greatly diminished over the years.

The area of focus was on Area P, where the red water ponds were located, and a topographical view of the entire military base show the flow of water from surface water all the way down to

aquifer water.

Dr. Brian Salvatore, one of the first to blow the whistle on the open burn process of nearly 16 million pounds of M6 demilitarized artillery propellant improperly stored at Camp Minden, showed concern about the water flow in the Boone Creek area, where he felt any potentially contaminated groundwater might escape. He called it a "perfect storm of worry."

"I just think that though you are not getting detections there, you need to maybe get some concentrators and get down as low as

you possibly can, because it seems like that is a big concern," Salvatore said.

Boone Creek flows into Dorcheat, which flows into Bistineau, and groundwater under Camp Minden feeds Boone Creek. The major concern there is about surface water filtering into the shallow groundwater, Salvatore said.

Myer answered, saying all the tests and monitoring of the groundwater and soil have come back negative for contamination, but it will certainly be something they can look at.

"We can look at that, but I don't know if we're going to get any different results," he said. "We did the investigation, we did the remediation and we're monitoring groundwater quality. Historically, from the samples we've done, we haven't had any surface water detects (problems)."

Myer spent some time going over the geology of Camp Minden, showing how the contamination to the ammunition plant began and how it was cleaned up.

Essentially, the munitions companies, at that time, were

trucking wastewater from manufacturing to ponds where that water was allowed to sit, evaporate and soak into the soil.

After the site was put on the National Priorities List in 1989, Myer says remediation began and the soil from those old ponds was dug up, treated and returned to its origin and "capped off" with red clay, impermeable dirt that does not allow water through.

Since the site cleanup in the late 80s and early 90s, the contamination levels, according to their data, con-

tinue to diminish, but there are still some very small areas in Area P that still register above what scientists deem safe to human and environmental health.

Myer also spent some time going over the process by which action is taken on environmental cleanups, from the time they know about contamination until post-remediation, when the area has been returned to its natural state.

BABY BLUES | RICK KIRKMAN AND JERRY SCOTT



BEETLE BAILEY | MORT & GREG WALKER



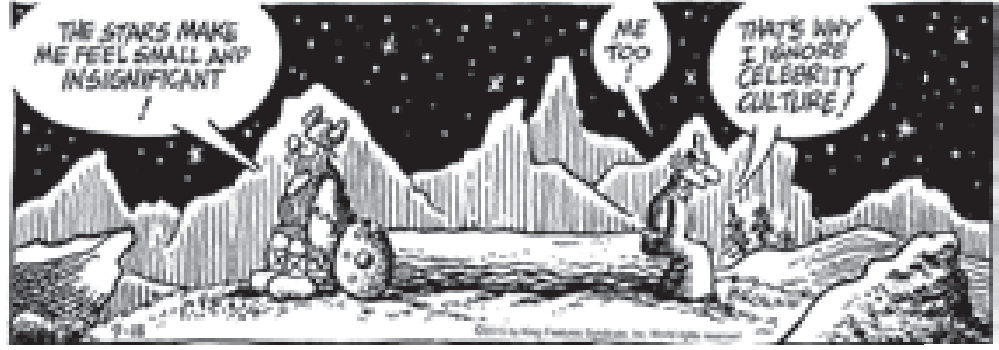
BLONDIE | DEAN YOUNG AND JOHN MARSHALL



FUNKY WINKERBEAN | TOM BATIUK



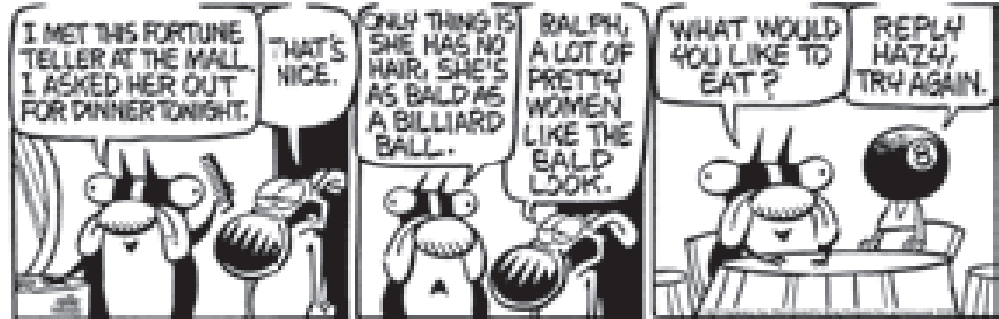
HAGAR THE HORRIBLE | CHRIS BROWNE



HI AND LOIS | BRIAN WALKER, GREG WALKER AND CHANCE BROWNE



MOTHER GOOSE & GRIMM | MIKE PETERS



SAM AND SILO | JERRY DUMAS



NORTHWEST LOUISIANA CLASSIFIEDS

The Marketplace of Webster and Bossier Parishes.

MINDEN PRESS-HERALD | 203 Gleason Street • Minden, La. 71055 | 318-377-1866 | www.press-herald.com



Grow YourB usiness
Call Courtney to place your ad!
377-1866
PLACE YOUR
AD TODAY!

Classified line ads are published Monday through Friday in the Minden Press-Herald, Bossier Press-Tribune and online at **press-herald.com**

Rates

Pricingise asy!
\$7.75
Per Day - Up to 20 words! Additional words are only 30¢ cents more!

GarageS ales
No word limit.

\$11
One Day

\$16.⁵⁰
Two Days

Receive a **FREEGar agesA le Kit** with your two day ad!
*Garage Sale ads must be prepaid.

Deadlines

Ads
Line ads must be submitted by noon the day before publication. Display ads two days prior to publication.

Public Notices
Public notices must be submitted two days prior to publication date depending on the length. Notices may be emailed to classifieds@press-herald.com

Payments
Cash, Checks, Billing



RealE stateNot ice
“All real estate advertised herein is subject to the Federal Fair Housing Act, which makes it illegal to advertise any preference, limitation or discrimination based on race, color, religion, sex, handicap, familial status, or national origin, or intention to make any such preference, limitation, or discrimination. We will not knowingly accept any advertising for real estate, which is in violation of the law. All persons are hereby informed that all dwellings advertised are available on an equal opportunity basis.

APARTMENTS FOR RENT

Hillside Apartments
1, 2 & 3 Bedrooms
400 Hillside Lane
Minden, LA 71055
318-377-5550
Lots of Room
Washer & Dryer
connections
Sparkling Pool

Red Oak Villa

1358 Sheppard St.
Minden, LA

Carefree Independent
Living For The Elderly

Low income
subsidized housing.
Free water & garbage.
Mailboxes & laundry
rooms. Emergency call
system. Convenient to
banking & shopping.

377-8474
8:00 - 4:00 • Mon. - Fri.

AUCTIONS

PUBLIC AUCTION
Sunday Sept. 20th
2:P. M. ALCO's
7733 Highway 80E
Princeton, La. We
have Furniture,
tools, glassware,
music instruments,
box lots, far far
more. Check it
out! Call for info.
Auctioneer Al Cox
La#626. All local
and state tax col-
lected. Cash or pre-
approved checks.
Snack bar open. No
consignments.

RENTAL

1730 DORCHEAT RD. 3br 1ba, Brick, C H/A, \$796/mo. Call Susan 272-9948
2 & 3 BEDROOM MOBILE HOMES Central H/A, All Electric. Call for more information 318-268-7937

Austin Rd. Minden \$750+de-
posit Owner/Agt
377-6062 **Holo-**
man Dubberly
\$750+deposit Owner/Agt 377-6062

GRICE APART-
MENTS 2 & 3 Bed-
rooms for rent. Call
318-377-7975
LARGE 3BR 3BA
fridge, stove, mi-
crowave, and dish-
washer. 318-268-
5932 or 423-4761

OFFICE FOR RENT
on Main St. Call
377-6235

SERVICES

EXPERIENCED
MALE SITTER for
work to take care of
male patient. Refer-
ences available.
318-475-8443

FLOWER BEDS
CLEANED, hedges
trimmed, fence
rows cleared, bush-
es cut. Call **Lawn**
Management for
free estimates 377-
8169

HUSBAND FOR
HIRE Home main-
tenance jobs. Call
Charles Stubbs
426-5425 or 377-
8658

EMPLOYMENT

CARING & COM-
PASSIONATE CNA'S
WANTED Apply in
person. Cypress Point
Nursing Center Boss-
ier City, LA (behind
Lowe's on Douglas
Dr.) 318-747-2700
Come & make a differ-
ence in someone's life

12 TEMPORARY WORKERS Felix Venegas Shearing Felix Venegas 6202 Farm Road 2083 Ozona TX. 76943 Occupation: Farm work-ers, Farm, Ranch and Animals 10/11/2015 - 08/11/2016 Pay rate \$10.35 per hour Sheep Ewe \$2.00 per head sheep Feedlot Lamb \$1.50 per head Sheep, Replacement Lamb \$1.90 per head Sheep Buck / Ram Shearer \$4.00 per head Farm work-ers Guaranteed 3/4 of contract hours. All tools, supplies, equipment and hous- ing will be Provided at no cost to the worker. Duties: Shearing Sheep / Sheep han- dler. Workers are re- quired to have a mini- mum of two months' work experiences. Job specification Ex- posure to extreme temperature, Exten- sive sitting Lifting re- quirements up to 40lb Repetitive movement Extensive pushing and pulling, Exten- sive walking, frequent stooping. Transporta- tion and Subistence expense reimbursed after 50 % of con- tract is complete. Interested applicants can send resumes to nearest State Work- force Agency office (512)475-2571 Using job listing TX2859700

COUNTRY ROAD RESOURCES, INC.

Would you like to make a difference in someone's life? Direct Support Workers and CNAs welcome. Must have High School Diploma or GED. Part time and Full time position available. Must have a positive attitude and be energetic. Must pass a drug test, criminal background check, and have a valid driver's license. Must share a commitment to better the lives of the people we serve in the communi- ty. We are a provider agency that is com- mitted to providing individualized support services to individu- als with disabilities in there home. Currently looking for workers in the Minden area. We offer competitive pay. CRR employees are paid weekly. For more information please contact us at 318- 847-4193 Our office is located at 25687 Hwy 371 Sarepta, LA 71071

FRONT OFFICE MEDICAL RECEPTIONIST BENTON CLINIC JOB DE-
SCRIPTION: Ben-
ton, LA - New family medical clinic looking for an energetic, pro-
fessional and driven member to join our team as a front office medical reception-
ist. **RESPONSIBILI-**
TIES: Greet patients Customer friendly atti-
tude Answer phones Schedule appoint-
ments Check in/check out Verify Insurance Collect copays, de-
ductibles, outstand-
ing balances Medical records Experience in coding preferred **REQUIREMENTS:** Medical experience including billing, cod-
ing, and/or health claims background preferred. High school diploma/college de-
gree Excellent com-
puter skills Should be very personable Excellent customer service skills Ability to multi-task Allscripts software experience preferred Interested applicants should contact Susan Conly at 318-326-7272 or email resume to susan.conly@ncmcla.com

DRIVERS

BILL & RALPH'S INC., 118 B&R Drive, Sarepta, La., Accepting ap-
plications for De-
livery Route Drivers with a CDL-A License. Paid em-
ployee medical insurance. Also available, family medical, employee dental and family dental. 401K match benefits, hourly plus incentive pay, yearly safety bonus pay. Apply at Bill & Ralph's, Contact Mickey Hodges at (318)539-2071

NOW HIRING qual-
ified servers, host-
esses and food
runners/ bussers.
Email contact in-
formation and pre-
vious work experi-
ence to admin@
myromas.com.

THE VILLAGE OF DI-
XIE INN is currently
seeking a part time
animal control of-
ficer to work 20
hours per week.
The applicant must
be a compassion-
ate person toward
animals. Applica-
tions can be picked
up at village hall,
60 Shell Street,
Monday - Thursday
from 8:00A. M. to
4:00P. M. The Vil-
lage of Dixie Inn is
an equal opportu-
nity employer.

VAC TRUCK
DRIVERS
NEEDED **Stal-**
lion produc-
tion services
in homer &
haughton, la is
seeking vacu-
um truck driv-
ers. Must have
clean record
and pass drug/
alcohol/work-
steps. Ben-
efits include:
competitive
pay, medical/
dental/vi-
sion insur-
ance-2 plans
to choose
from-, 401k
w/co match,
long & short
term disability,
5/2 schedule.
\$500 sign on
bonus pd after
90 days excel-
lent emp re-
cord. Apply in
person @ 7034
hwy 79 n, hom-
er, la or 205
hwy 164, bldg.
A, haughton,
la or email re-
sume to jro-
len@sofs.cc

VILLAGE OF DOY-
LINE is accepting
resumes for a part-
time maintenance
person. Duties will
include, but are not
limited to, mowing,
minor street and
sign repairs, an
other maintenance
duties as needed.
Equipment opera-
tion and mainte-
nance experience
is a must. Apply
in writing, giving
qualifications by or
before October 2,
2015. Mail resumes
to the Village of
Doyline, PO Box
626, Doyline, LA
71023 or drop them
off at Town Hall,
624 College St. in
Doyline on a Mon-
day, Tuesday, or
Thursday between
the hours of 8am-
12pm.

HOMES FOR SALE

16X80 MOBILE
HOME FOR SALE as
is. Must be moved.
\$2,000. 268-7937

412 GOODE 3BR,
brick, C A/ H, R&O,
DW. Needs repairs
\$59,500 Call 377-
8767

BEAUTIFUL 1 & 1/2
STORY HOME in
great neighborhood
1405 Whisper-
ing Pines Dr. 2480
sqft. 3br 2 & 1/2ba,
Attached carport,
318-433-056



SHERIFF S SALE

WELLS FARGO
BANK, NA

VS.

ROBERT LYNN
ROWELL A/K/A
ROBERT A/K/A
ROWELL A/K/A
ROBERT ROWELL
AND DEBRA
STUART ROWELL
A/K/A DEBRA S.
ROWELL A/K/A
DEBRA ROWELL

In the
Twenty-Sixth
Judicial District
Court of Webster
Parish, Louisiana,

FOR SALE

ALFALFA HAY FOR
SALE \$16/Bale.
22% protein. Deliv-
ery Available. Call
or text Terry. 318-
245-2070

GARAGE SALES

102 EWELL ST.
8am-until. Satur-
day Sept. 19th.
Brand new clothing,
household items,
cleaning supplies,
and lots more! NO
EARLY BIRDS!

16TH ANNUAL 5
Mile Rummage
Sale Sat. Sept. 19,
2015 in Shongaloo
on Hwy 159 & just
of 159, from new
Shongaloo to the
state line. Watch for
signs and balloons!
Lots of stuff! Great
Prices! Come rum-
mage and have fun
with us! Sat. Sept.
19th, 2015 Ya'll
come!

207 ELLIS DR. Sat-
urday Sept 19th.
7:00-11:00 (2) din-
ing room tables
with 4 chairs. Mi-
crowave stands (2),
toys, books, knick
knacks, clothes, so
much more.

308 LAKESHORE
DRIVE Friday 8AM
and Saturday 8AM.
Large garage sale,
including men and
womens clothing,
shoes, Christmas
decorations, large
outdoor manger
scene, John Deere
walk behind mow-
er w/electric start,
Ceiling fan w/lights,
grill, rotisserie,
and miscellaneous
items. Jewelry No
customers before
Friday 8AM

308 PINE STREET
Toddler clothes and
other items, toys
household goods
and more, located
in office building on
Pine street

409 E UNION ST.
Saturday Septem-
ber 19th 2015.
7am-2pm. Women
and men cloth-
ing, shoes, jewelry,
purses, household
& seasonal items
and much more!

HOMES FOR SALE

16X80 MOBILE
HOME FOR SALE as
is. Must be moved.
\$2,000. 268-7937

412 GOODE 3BR,
brick, C A/ H, R&O,
DW. Needs repairs
\$59,500 Call 377-
8767

BEAUTIFUL 1 & 1/2
STORY HOME in
great neighborhood
1405 Whisper-
ing Pines Dr. 2480
sqft. 3br 2 & 1/2ba,
Attached carport,
318-433-056



SHERIFF S SALE

WELLS FARGO
BANK, NA

VS.

ROBERT LYNN
ROWELL A/K/A
ROBERT A/K/A
ROWELL A/K/A
ROBERT ROWELL
AND DEBRA
STUART ROWELL
A/K/A DEBRA S.
ROWELL A/K/A
DEBRA ROWELL

In the
Twenty-Sixth
Judicial District
Court of Webster
Parish, Louisiana,

No. 74750.

By virtue of a WRIT
OF SEIZURE AND
SALE issued out
of the Twenty-Sixth
Judicial District
Court of Webster
Parish, Louisiana,
in the above styled
and numbered suit
and to me directed,
I have seized and
taken into my pos-
session and will offer
for sale at public auc-
tion to the last and
highest bidder for cash
WITH the benefit
of appraisalment
and according to law
at the principal
front door of the
Courthouse in the
City of Minden,
Louisiana Parish,
Louisiana, on
WEDNESDAY,
September 23,
2015,

during the legal
sale hours, the
following property,
to wit:

A four (4) acre
tract of land in the
Northeast Quarter
(1/4) of Southeast
Quarter (1/4),
Section 5, Township
18 North, Range
8 West, Webster
Parish, Louisiana,
more particularly
described as
follows:

Begin at the
Southeast corner
of Northeast
Quarter (1/4) of
Southeast Quarter
(1/4), Section 5,
and run North 89
degrees 30 minutes
West 106 feet to
a point on West
right of way line of
Louisiana Highway
No. 532, thence
run along said right
of way North 03
degrees 16 minutes
East 585.23 feet,
thence run North
02 degrees 34 minutes
East 319.04 feet to
the point of begin-
ning of the property
herein being de-
scribed; thence run
North 89 degrees
17 minutes 06
seconds West 06
seconds East 417.5
feet to a point on
West right of way
line of Louisiana
Highway No. 532,
thence run South
02 degrees 34
minutes 25 seconds
West 417.5 feet to
the point of begin-
ning, together
with all buildings
and improvements
located thereon.

Including a
2006 KABCO
manu factured
home, Model
#KB-3206, VIN
#KB010954A/B.

SOLD SUBJECT
TO ANY
SUPERIOR LIENS,
MORTGAGES
OR PRIVILEGES
THERETO.

Linda Vaughan-
Deputy

GARY S. SEXTON
Sheriff and Ex-
Officio Auctioneer,
Webster Parish,
Louisiana

Linda Vaughan-
Deputy

August 21, 2015
September 18, 2015
Minden Press-Herald

SHERIFF S SALE

21ST MORTGAGE
CORPORATION

VS.
JANIE M. MARTIN

In the
Twenty-Sixth
Judicial District
Court of Webster
Parish, Louisiana,
No. 74741.

By virtue of a WRIT
OF SEIZURE AND
SALE issued out
of the Twenty-Sixth
Judicial District
Court of Webster
Parish, Louisiana,
in the above styled
and numbered suit
and to me directed,
I have seized and
taken into my pos-
session and will offer
for sale at public auc-
tion to the last and
highest bidder for cash
WITH the benefit
of appraisalment
and according to law
at the principal
front door of the
Courthouse in the
City of Minden,
Webster Parish,
Louisiana, on
WEDNESDAY,
September 23,
2015,

during the legal
sale hours, the
following property,
to wit:

2003 Chande-
leur 16 x 80 mobile
home bearing
serial number
C H 3 A L 0 7 1 3 6
immobilized onto
and including the
following described
i m m o v a b l e
p r o p e r t y :
commence at the
southwest corner
of the SE/4 of the
SE/4 of Section 26,
Township 20 North,
Range 9 West,
Webster Parish, LA
and run north along
the west line of said
section, a distance
of 100 feet to the
point of beginning;
thence continue
north along the
section line a
distance of 160
feet; thence run
east and parallel to
the south forty line
a distance of 200
feet; thence run
south and parallel
to the west forty
line a distance of
260 feet to the
south forty line
thence run west
along the south
forty line a distance
of 125 feet; thence
run north 100 feet;
thence run west
a distance of 75
feet to the point of
beginning.

SOLD SUBJECT
TO ANY
SUPERIOR LIENS,
MORTGAGES
OR PRIVILEGES
THERETO.

Linda Vaughan-
Deputy

August 21, 2015
September 18, 2015
Minden Press-Herald

SHERIFF S SALE

REVERSE
MORTGAGE
SOLUTIONS, INC

VS.

DELORES ANN
M E A C H A M
FESTERVAN

In the
Twenty-Sixth
Judicial District
Court of Webster
Parish, Louisiana,
No. CV74771.

By virtue of a WRIT
OF SEIZURE AND
SALE issued out
of the Twenty-Sixth
Judicial District
Court of Webster
Parish, Louisiana,
in the above styled
and numbered suit
and to me directed,
I have seized and
taken into my pos-
session and will offer
for sale at public auc-
tion to the last and
highest bidder for cash
WITHOUT the benefit
of appraisalment
and according to law
at the principal
front door of the
Courthouse in the
City of Minden,
Webster Parish,
Louisiana, on
WEDNESDAY,
October 21, 2015,
during the legal
sale hours, the
following property,
to wit:

GARY S. SEXTON
Sheriff and Ex-
Officio Auctioneer,
Webster Parish,
Louisiana

Linda Vaughan-
Deputy

August 21, 2015
September 18, 2015
Minden Press-Herald

SHERIFF S SALE

LPP MORTGAGE
LTD

VS.

ARTHUR ARCHIE
NEAL AND
PATRICIA ANN
CREGHAN NEAL
In the
Twenty-Sixth
Judicial District
Court of Webster
Parish, Louisiana,
No. 74618.

By virtue of a WRIT
OF SEIZURE AND
SALE issued out
of the Twenty-Sixth
Judicial District
Court of Webster
Parish, Louisiana,
in the above styled

and numbered suit
and to me directed,
I have seized and
taken into my pos-
session and will offer
for sale at public auc-
tion to the last and
highest bidder for cash
WITH the benefit
of appraisalment
and according to law
at the principal
front door of the
Courthouse in the
City of Minden,
Webster Parish,
Louisiana, on
WEDNESDAY,
September 23,
2015,

during the legal
sale hours, the
following property,
to wit:

Lots 103 & 104,
Babb addition, City
of Minden, Webster
Parish, Louisiana,
as per plat recorded
in Book 2 Page 82,
in the Conveyance
Records of Webster
Parish, Louisiana,
together with all
buildings and im-
provements thereon.

Which has the
address of 1007
Horton Street,
Minden, LA 71055

SOLD SUBJECT
TO ANY
SUPERIOR LIENS,
MORTGAGES
OR PRIVILEGES
THERETO.

S a i d
property seized
is that of the
defendant and will
be sold to satisfy a
judgment rendered
in our Honorable
Court.

GARY S. SEXTON
Sheriff and Ex-
Officio Auctioneer,
Webster Parish,
Louisiana

Linda Vaughan-
Deputy

August 21, 2015
September 18, 2015
Minden Press-Herald

SHERIFF S SALE

REVERSE
MORTGAGE
SOLUTIONS, INC

VS.

DELORES ANN
M E A C H A M
FESTERVAN

In the
Twenty-Sixth
Judicial District
Court of Webster
Parish, Louisiana,
No. CV74771.

By virtue of a WRIT
OF SEIZURE AND
SALE issued out
of the Twenty-Sixth
Judicial District
Court of Webster
Parish, Louisiana,
in the above styled
and numbered suit
and to me directed,
I have seized and
taken into my pos-
session and will offer
for sale at public auc-
tion to the last and
highest bidder for cash
WITHOUT the benefit
of appraisalment
and according to law
at the principal
front door of the
Courthouse in the
City of Minden,
Webster Parish,
Louisiana, on
WEDNESDAY,
October 21, 2015,
during the legal
sale hours, the
following property,
to wit:

GARY S. SEXTON
Sheriff and Ex-
Officio Auctioneer,
Webster Parish,
Louisiana

Linda Vaughan-
Deputy

August 21, 2015
September 18, 2015
Minden Press-Herald

SHERIFF S SALE

LPP MORTGAGE
LTD

VS.

ARTHUR ARCHIE
NEAL AND
PATRICIA ANN
CREGHAN NEAL
In the
Twenty-Sixth
Judicial District
Court of Webster
Parish, Louisiana,
No. 74618.

By virtue of a WRIT
OF SEIZURE AND
SALE issued out
of the Twenty-Sixth
Judicial District
Court of Webster
Parish, Louisiana,
in the above styled

Description: (Tract
A) A 1.28 acre,
more or less, tract of
land located in the
Northeast Quarter,
of the Southwest
Quarter, (NE/4
SW/4), Section
34, Township 20
North, Range 10
West, Webster
Parish, Louisiana,
more particularly
described as
follows:

CLASSIFIEDS

www.press-herald.com

Begin at a found iron pipe located at the Northwest Corner of the Northwest Quarter (NW/4 NW/4), said Section 34; thence run South 00 degrees 29 minutes 24 seconds West for a distance of 2728.32 feet to a found iron pipe; thence run South 89 degrees 03 minutes 28 second East for a distance of 2438.22 feet to a point; thence run South for a distance of 23.74 feet to a set 3/4 inch iron rod; thence run South 37 degrees 07 minutes 09 seconds West for a distance of 236.00 feet to a sets 3/4 inch iron rod; thence run North 61 degrees 16 minutes 53 seconds West for a distance of 212.53 feet to a set 3/4 inch iron rod; thence run North 31 degrees 18 minutes 2 seconds East a distance of 261.709 feet to the point of beginning; subject to restrictions, servitudes, rights-of-way and outstanding

mineral rights of record affecting the property.

SOLD SUBJECT TO ANY SUPERIOR LIENS, MORTGAGES OR PRIVILEGES THERETO.

Said property seized is that of the defendant and will be sold to satisfy a judgment rendered in our Honorable Court.

GARY S. SEXTON
Sheriff and Ex-Officio Auctioneer,
Webster Parish,
Louisiana
Linda Vaughan-Deputy

September 18, 2015
October 16, 2015
Minden Press-Herald

SHERIFF'S SALE

SELENE FINANCE LP
VS.

ROBERT AARON MILLER A/K/A
ROBERT A. MILLER A/K/A
ROBERT MILLER AND DONNA LYNN BROWN A/K/A
DONNA L. BROWN A/K/A
DONNA BROWN

In the Twenty-Sixth Judicial District Court of Webster Parish, Louisiana,

No. 74677.
By virtue of a WRIT OF SEIZURE AND SALE issued out of the Twenty-Sixth Judicial District Court of Webster Parish, Louisiana, in the above styled and numbered suit and to me directed, I have seized and taken into my possession and will offer for sale at public auction to the last and highest bidder for cash WITHOUT the benefit of appraisalment and according to law at the principal front door of the Courthouse in the City of Minden, Webster Parish, Louisiana, on

WEDNESDAY, October 21, 2015, during the legal sale hours, the following property, to wit:

A 1.075 acres, more or less, tract of land in the Northeast 1/4 of Section 36, Township 20 North, Range 9 West, Webster Parish, Louisiana, more fully described as follows:

From the Northeast corner of said Section 36, run thence South 0°33' West along the East line of said Section 36, a distance of 1778.38 feet to a set railroad

spike and Point of Beginning of the tract herein described. Continue thence South 0°33' West along the East line of Section 36, a distance of 5.0 feet to a found 2 iron pipe for corner, being a point on the Northwest right-of-way line of Miller Road; run thence South 31°30' West along Miller Road, a distance of 210.0 feet to a found 1/2 iron pipe for corner; run thence North 58°30' West, a distance of 210.0 feet to a found 1/2 iron pipe for corner; run thence North 0°33' East, a distance of 105.0 feet to a found 2 iron pipe for corner; run thence South 58°30' East a distance of 53.4 feet to a set 1/2 iron pipe for corner; run thence South 0°29'54" West, a distance of 133.05 feet to a set 1/2 iron pipe for corner; run thence South 69°33'06" East, a distance of 142.97 feet to the POINT OF BEGINNING; as shown on the map of survey dated February 1,

2007 by Roger C. Wilkinson, P.L.S., together with all improvements thereon and all rights thereunto belonging, together with Manufactured Home more fully described as a 2007 Deer Valley DV8011, 32 x80 Manufactured Home, Bearin Sserial Number DVAL10701660 A/B, HUD #TRA563295 & HUD #TRA563296, said unit(s) attached to the land in a permanent manner so as to be rendered an immovable fixture and an integral part of the subject property.

SOLD SUBJECT TO ANY SUPERIOR LIENS, MORTGAGES OR PRIVILEGES THERETO.

Said property seized is that of the defendant and will be sold to satisfy a judgment rendered in our Honorable Court.

GARY S. SEXTON
Sheriff and Ex-Officio Auctioneer,
Webster Parish,
Louisiana
Linda Vaughan-Deputy

September 18, 2015
October 16, 2015
Minden Press-Herald

SMALL ADS DO SELL! CALL AND PLACE YOURS TODAY! 377-1866

IT PAYS

A man wakes up after sleeping under an **ADVERTISED** blanket on an **ADVERTISED** mattress, shaves with an **ADVERTISED** razor, brushes his teeth with **ADVERTISED** toothpaste, washes with **ADVERTISED** soap, puts on **ADVERTISED** clothes, drinks a cup of **ADVERTISED** coffee, drives to work in an **ADVERTISED** car and then refuses to **ADVERTISE** believing it doesn't **PAY**.

Later, when his business is failing he **ADVERTISES** it for sale in the...

MINDEN PRESS-HERALD CLASSIFIEDS

Let your customers know what you have.
Call and **ADVERTISE** today! 377-1866

CRYPTOQUIP

Q G O K R G B F I B Z Z G Y A
R F Z Y V A R M B Q B Z G L F B O G O
B F G O R , V O R F G T I L K B Y Y F R
B K V B Y - V C G R O L R M Z R C Q V O .

Yesterday's Cryptoquip: SHE HAS BEEN HARBORING RESENTMENT AGAINST THAT MENIAL LABORER. I GUESS SHE'S HOLDING A DRUDGE.

Today's Cryptoquip Clue: B equals A

CROSSWORD

- | | | | |
|---------------------------------|---------------------------------------|--------------------------------------|---------------------------------|
| ACROSS | 41 Mexican entree | 4 Small flycatcher | 21 Engine noise |
| 1 Picks out of a lineup | 42 "Wow!" | 5 Laugh-a-minute | 22 Leave |
| 4 Ship's front | 47 Squirrels' hangouts | 6 Bobby of hockey | 23 Tiers |
| 8 Wild party | 48 "That's funny!" to a texter | 7 Become one | 25 Amorphous mass |
| 12 Plaything | 49 Cincinnati team | 8 Anne who married Henry VIII | 26 In toto |
| 13 Green land | 50 Genealogy chart | 9 More than enthusiastic | 27 Burn somewhat |
| 14 Curved molding | 51 Sweet potato | 10 Antitoxins | 28 Lily variety |
| 15 "Wow!" | DOWN | 11 Command to Fido | 30 Coffin support |
| 17 Traditional tales | 1 Judge Lance | 16 Oxen's binder | 33 Data holders |
| 18 Versifier | 2 Homer's interjection | 19 Young blokes | 34 Ganges wrap |
| 19 Constitutional | 3 Formal discussions | 20 Too confident | 36 Talk a blue streak? |
| 20 Orated | | | 37 Use a teaspoon |
| 22 Overcast | | | 38 Loathe |
| 24 Ponder | | | 39 On the rocks |
| 25 "Wow!" | | | 40 Prepare a casserole |
| 29 Swiss canton | | | 42 Braille component |
| 30 Huffs and puffs | | | 43 Anvil's site |
| 31 Born | | | 44 Extinct New Zealander |
| 32 "Wow!" | | | 45 Shade provider |
| 34 Unescorted | | | |
| 35 Unpaid bill | | | |
| 36 Illinois city | | | |
| 37 Bake eggs | | | |
| 40 Perry Mason portrayer | | | |

Solution time: 25 mins.

C	H	A	D	I	R	K	R	I	C	O
L	E	V	I	M	O	I	A	C	I	D
E	R	O	S	P	E	T	D	E	A	D
F	O	N	D	U	E	G	L	A	W	
				A	L	L	T	H	E	R
P	O	S	I	T	H	E	N	T	A	D
I	V	A	N		P	U	N	L	E	W
T	A	I		A	R	M		P	E	R
A	L	L	T	H	E	B	E	S	T	
				B	E	A	T	R	I	T
O	B	O	E	Z	O	O	I	S	L	E
L	O	A	N		E	N	D	N	E	T
D	O	T	S	L	E	E	G	R	A	S

Yesterday's answer 9-18

1	2	3		4	5	6	7		8	9	10	11
12				13					14			
15			16						17			
		18						19				
20	21					22	23					
24					25					26	27	28
29				30						31		
32			33						34			
			35						36			
37	38	39					40					
41						42	43				44	45
46						47					48	
49						50					51	

BUSINESS & SERVICE DIRECTORY

PROFESSIONAL REFERENCES FOR ALL YOUR NEEDS

ADVERTISE your business!
Call Telma or Curtis
at 377-1866.



T & I ROOFING, LLC

Licensed & Insured

- Leak Repair
- Shingle Roofs
- Metal Roofs
- Flat Roofs
- Construction SVCS
- Senior Citizen Discount

150 Years Combined Roofing Experience

Work Guaranteed in Writing

Ask for Todd • FREE ESTIMATES • 318-458-5544

Lucky Brake Driving Academy

Drivers Ed • Defensive Driving • Driving Lessons

LICENSED INSTRUCTORS
Elizabeth M. Hollingsworth
Carter, TPT
Paulesta H. Gilbert
Kathie Boyett
Carolyn Hollingsworth

209 Pine • Minden
318-299-3853

Follow us on Facebook!

Pool Problems?

WE NOW OFFER
MONTHLY SERVICE FOR
\$75

**Go Local.
Go Pool Fool.
371-7773**

HAVE YOU HEARD?

Tru-Tone Hearing Aid Center

Has served the NWLA area for over 30 years providing experience, convenience, quality and value, the newest technology, a money back guarantee and easy financing for all your hearing needs!

371-0995
338 Morris Drive • Minden

Cowart Chair Caning

Services Include:
Seat Weaving
Cane Webbing
Shaker Tape Repairs

Visit us on Facebook!

Service Experts

HEATING & AIR CONDITIONING

AC NOT COOLING? CALL US TODAY!

WE DO:
REPAIRS • INSULATION
SCHEDULED MAINTENANCE
NEW INSTALLATIONS
DUCT WORK • SOLAR

318-751-9289
WWW.SERVICEEXPERTS.COM

May Mays Pampered Pets

Grooming, Love and Care for a reasonable price!

Doggy Daycare & Boarding available!

148 Gregory Circle
Minden, LA 71055
318-299-3593

(call for pricing)

Leigh's Maintenance Service

FREE Estimates!
Senior Discounts Available

Home Remodeling
Pressure Washing
Home Maintenance
Interior/Exterior Painting

318-245-0241

LAWN Management

Call today for a free quote! **318-377-8169**

Weed Eating • Edging • Mowing • Blowing
Other Services

VISA

Shull Tree Service, LLC

Licensed & Insured Arborist
28 Years Experience
Honest, dependable, efficient
FREE ESTIMATES

- Tree Removal
- Tree Trimming
- Chipping & Hauling
- Clean-up
- Stump Grinding
- Firewood

Gerald Shull, Owner • 377-7725 or 470-5570

"Come Ride With Us"

Webster Parish Police Jury
Office of Community Services
PUBLIC TRANSPORTATION

Medical appointments, work, shopping, banking or visiting. From Springhill to Shreveport and all points in between we will get you there with dependable, courteous services.

For information or to schedule a ride
318-377-7022 - Minden
318-539-5696 - Springhill

Handicap & wheelchair accessible
Equal opportunity employees/services

Monthly Bus Passes Available

A-1 PAINT COMPANY

Interior/Exterior painting • Staining • Drywall • Siding • Gutter • Roofing • Scaffolding

318-390-3286 • 318-455-9992

MITCHELL DIRT & ASPHALT

- Asphalt & Concrete Paving
- Dirt Work & Hauling
- Demolition

Contact Keith
377-8594 or 470-0812

LILLY'S LAWN CARE

318.294.6867
Licensed & Insured

Brown Service Center

Fast oil changes starting at \$29.99
Tire Service • Brakes • Alignment

390-1520
904 Homer Road • Minden

Brown's Glass

See us for all your glass needs!
"Automotive" "Residential" "Commercial"

371-9898
611 Shreveport Road • Minden

BOBBY WILLIAMSON

SEA WALLS, BOAT HOUSES AND DOCKS

Phone: 318-927-2806
Cell: 318-245-3308

Yellow Ruthe Business Services

219-776-0404

"Shopping/Errand Services"

PICK UP & DELIVERY OF:
• Groceries
• Prescriptions
• Retail Items (Walmart, Sears, etc.)
• Fast Food

10% SENIOR CITIZEN DISCOUNTS ARE AVAILABLE

FAST, FRIENDLY & PROFESSIONAL SERVICE!

Changing Behavior Services, LLC

Mental Health Rehab Agency
Family, Individual & Group Counseling

Psychiatric Rehabilitation Services Includes:
• Assessment & Reassessment for MH Services
• Individual and Group Psycho-social Skills Training
• Family, Individual and Group Counseling
• Medication Management and Education

Clinical Staff Experience Includes:
• Master Level Staff
• Licensed Professional Counselors
• Licensed Clinical Social Workers

Office: 318-371-6707 Fax: 318-377-8164
114 West Union Street • Minden, LA 70155

CRUMPLER CONSTRUCTION

Custom Homes
Remodeling • Additions
Custom Decks • Driveways

318.927.2325
Licensed & Insured

HOL-MONT

Sales • Rental
YOUR OUTDOOR POWER EQUIPMENT HEAD-QUARTERS

1040 HWY. 531 • MINDEN, LA • (318) 371-0550

YOUR SOURCE FOR OUTDOOR POWER AND RENTAL EQUIPMENT!

KAMADO JOE
YETI COOLERS
FULL LINE YETI DEALER!

Monday-Friday 8:00-5:00 Saturday 8:00-12:00

PINK PRATIQUE

731 MAIN STREET | MINDEN, LA | (318) 638-5035

- post opt supplies for breast prothesis
- bras
- lingerie
- shapewear for any occasion

NOW ACCEPTING: MEDICAID, MEDICARE & PRIVATE INSURANCES!

STORE HOURS:
9AM-5PM (M-F)
10AM-3PM (SAT)
AFTER HOURS:
318-554-8116

PINKPRATIQUEMATT.NET

Dixie Floors, Inc

Serving All Of Northwest Louisiana

Hot Deals!
All prices are INSTALLED
Starting at \$1.57 sq ft Carpet de Pad
Starting at \$3.99 sq ft Laminate
Starting at \$4.99 sq ft Ceramic Tile

Free Estimates

Across the street from Capital One Bank
318.377.8979
617 Main Street, Minden, LA

Carpet
Vinyl
Laminate
Tile
Ceramic
Wood

Exclusively at The Gift Gallery

Music of the Sphreres

HANDCRAFTED IN AUSTIN, TEXAS, USA

Hearing is believing

ACE Gift Gallery
Hardware

318-382-9000
807 Homer Road
Minden, LA