



MINDEN PRESS-HERALD

www.press-herald.com

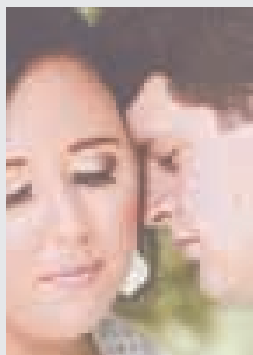
October 23, 2015 | 50 Cents

FRIDAY

INSIDE
today



Webster
arrest
report
NEWS PG. 9



Gray - Birky
engaged
to marry
LIFE PG.5



Giving
sanctuary to
anarchy
OPINION PG.4

WEATHER

TOMORROW'S OUTLOOK



86
HIGH
67
LOW

Cloudy. A stray shower or
thunderstorm is possible.
Winds SSE at 5 to 10 mph.

CONNECT WITH US
@mindenph
f t
specht
Vol. 47 No. 80



HOMEcoming

Minden High, Lakeside to celebrate homecoming

Courts to be presented at tonight's football games



Minden High School, above, and Lakeside High School, right, will welcome alumni over the weekend to celebrate homecoming. At tonight's games, the schools will crown the homecoming queen and present the court. Meet the court ahead of the games inside in the annual homecoming sections. Courtesy Photos

**MHS Homecoming
Parade starts at
3:30 p.m. in
downtown Minden**



ELECTION 2015

Police jurors, governor top ballot

Polls open from 7 a.m.
until 8 p.m. Saturday

MICHELLE BATES
michelle@press-herald.com

Saturday is the chance for voters to have their say in who Louisiana's next governor will be as well as other statewide and local offices.

Also on the ballot will be four constitutional amendments as well as one parish-wide tax renewal proposition for the Webster Parish School Board. Saturday's ballot includes:

Local
Police Juror, District 4: "Bruce" Compton and Randy Thomas

Police Juror, District 5: Bernard Hudson and Perry Kirkland

Police Juror, District 6: "Jim" Bonsall and Ronald Douglas Sale

Police Juror, District 8: Nicholas "Nick" Cox and Harper Edwards

Police Juror, District 9: Beverly "Debbie" Kennon and Jerri M. Lee

Police Juror, District 12: George Fuller, Bryan Langford, Dustin Moseley and Rebecca Shelley-Sherrard

WPSB Tax Renewal Proposition
Vote YES or NO
"Shall the Webster Parish School District, Parish of Webster, Louisiana (the "District"), continue to levy and collect a special tax of two and eighty-two hundredths (2.82) mills on all property subject to taxation in the

See **BALLOT**, Page 14

INSIDE
View a
sample
ballot of
Saturday's
election
inside on
pg. 8.

FUNDRAISER

Bloxom gun auction raises more than \$16k

MICHELLE BATES
michelle@press-herald.com

Guns owned by a legend went to a good cause Thursday, as thousands of dollars were raised for the children's building at First United Methodist Church.

The late T.C. Bloxom's gun collection went up for auction with the highest bid at \$950 for a Smith and Wesson model 669 9mm. The lowest bid was \$150 for an Essex long gun. Bloxom owned a 1915 Stevens Arms Co. 22 long rifle "crack shot" that went for \$250.

The total raised by gun sales, a duck hunt and a quail hunt was \$16,750. Tickets to the event raised roughly \$2,500.

Pam Bloxom, the late

chief's wife, says she is overwhelmed by the turnout and the generosity of those who attended.

"I'm overwhelmed with the support and the terrific memories they have of T.C.," she said. "I am just so grateful for the amount of money that was raised for the church. They can all take great satisfaction in knowing that they contributed to something that's going to be a part of Minden's children's daily lives for many years to come."

Jerry Holley, a member of FUMC, says he didn't know T.C. Bloxom well, but they had a saying about him because he served as Minden's fire chief and police chief for so long.

See **AUCTION**, Page 3



Potential bidders looked at pistols up for bid before a gun auction Thursday. Proceeds from the sales of the late T.C. Bloxom's gun collection will go towards the construction of the children's building at First United Methodist Church. Michelle Bates/Press-Herald

We give you a
reason to...



Family Dentistry • New Patients Welcome • Most Insurance Accepted
Same day permanent crowns now available.

ELM STREET DENTAL CENTER

ZACH M. GOODMAN, D.D.S. FRED V. CABANISS, D.D.S.

909 ELM STREET • MINDEN, LA 71055 • 318-377-9411

SECONDFRONT

www.press-herald.com

CITY UTILITIES

City to continue electrical construction Monday

MICHELLE BATES
michelle@press-herald.com

The City of Minden will be replacing more electrical lines and poles in certain areas beginning Monday.

The areas affected by the project include the alternative school, Constable Street (starting at the 800 block and going north), Crestview Drive, Loop Road, Shirley Drive, Guthrie Lane, Ellis Drive (between Constable and Howard Street), Martin Circle and Susan Circle.

The work will continue until it is completed.

Public works director George Rolfe says the project

is necessary to rehabilitate the electrical system and is in preparation to connect the missing link in the city's transmission loop. The work began on Lewisville Road Monday.

"This is in preparation to start completing the loop," he said.

Affected areas this week have included the south side of Pecan View Drive, the north side of Bay Creek Road, Bonnie Lane from the south side of Pecan View Drive to Mary Drive, Mary Drive and the south side of Virginia Avenue.

The whole project may take as many as two years, he said.

In August, he explained the system was upgraded from 69 kva, or 1,000 volt amps, to 115 kva transmission.

"The old system stopped at the steam plant at 69 kva and used to loop the whole town," he said in August.

In 2001, a new substation on East Street was built and the substations at Sheppard Street and Germantown were upgraded. Part of that upgrade was new galvanized poles.

Rolfe says power outages will occur as work commences, but crews are trying to keep the outage time to a minimum.

TRAFFIC ADVISORY



REPAIRS DETOUR LA. HWY 159 TRAFFIC

Traffic along La. Hwy 159 (Lewisville Road) is being detoured due to repairs being made to a bridge. Cindy Dorfner with the Louisiana Department of Transportation and Development says crews are conducting erosion repair under the Caney Creek bridge north of Minden and the detour should last about 14 days. Bruce Franklin/Press-Herald



ELECT

Nick Cox

Webster Parish

Police Jury

District 8

■ VOTE TOMORROW ■



He doesn't just believe in our values,
HE LIVES THEM EVERY DAY.

"As a father, a husband, a Christian and a Conservative, you can count on me to be the voice in Baton Rouge that represents who we are and what matters to our families."

— Ryan Gatti

RYAN
GATTI^{#55}
STATE SENATE DISTRICT 36

Ryan Gatti will vote:

- To protect our businesses, create jobs and balance the budget
- Against tax increases
- To put education back in the hands of our teachers
- For the protection of the unborn
- To support first responders, law enforcement officers and firemen
- To protect our 2nd Amendment rights and Northwest Louisiana values

As the next State Senator for District 36, you can count on Ryan Gatti to be a strong, pro-business conservative that will stand strong for the people of Northwest Louisiana.

Ryan has fought for our families for the last 15 years, and he will bring that same grit and determination to Baton Rouge. Protecting what is most important to us will drive every decision he makes.

He will represent who we are and what matters to our families.

WEBSTER CRIME

DWI charge sends one to jail

MICHELLE BATES
michelle@press-herald.com

A Minden woman found herself under arrest when she was stopped for a speeding violation.

Theresa Cook, aka “Tank,” 33, of the 100 block of Chandler Street, was arrested Wednesday, Oct. 21, and charged with driving while intoxicated (first offense)

and open container. She was cited for speeding. Bond was set at \$1,580.

According to reports, Webster Parish sheriff’s deputy Coby Barton initiated a traffic stop on Highway 371, clocking the driver, identified as Cook, traveling 82 in a 55 mile per hour zone.

Upon contact with Cook, reports indicate her eyes were red and watery and her speech was slurred. Barton

reportedly detected a strong odor of an alcoholic beverage coming from her person.

Field sobriety tests were conducted to which she performed poorly, according to reports. Inside her vehicle, a cup with



COOK

an alleged alcoholic beverage was discovered.

Cook was transported to the Minden Police Department where she was given a breathalyzer test, with a blood alcohol content of .195. The legal limit is .08.

She was transported to Bayou Dorcheat Correctional Center for booking on the above charges.

EDUCATION

Common Core spring scores released

MICHELLE BATES
michelle@press-herald.com

Assessment scores from the Common Core spring testing were released to the public Thursday.

Webster Parish superintendent of schools Dr. Dan Rawls says he’s just received the results and is just scratching the surface of what they all mean.

“I’ve just scratched the surface,” he said. “It’s going to take a while to look at all of this.”

Thursday’s release of district and school scores follows last week’s release of statewide results showing that only 22 of 40 percent of Louisiana public school students show what state officials consider “mastery” of their subject matter, depending on grade and subject matter.

The state considers “mastery” the level at which students are ready for post-secondary education, state education superintendent John White said in a news conference.

And while schools and districts can currently earn an “A” grade in the state accountability system when the average score is the lower “basic” level, that bar will slowly be raised in the coming years. Schools and districts will have to average out at the “mastery” level to do that well in 2025.

The 2014-15 school year is the first of two years of baseline scores before the scores will “count,” but White says this year’s scores, using the



RAWLS

new test, are in line with how students performed overall last year.

“If they give the same test next year, they can compare this year’s scores with next year’s scores,” Rawls said. “Then they will count. But if you change the test again, then they won’t. That’s what people are complaining about all the time. He’s saying, ‘We’re trying to standardize the test so you can compare them.’”

White says the results aren’t surprising.

“You’re not going to see us compare this year’s results with last year’s results because you have different kids taking the tests and you have different tests,” White said. “However, the results are generally comparable to past assessments.”

The tests administered in the spring to about 320,000 students in grades 3-8 were

developed by the Partnership for Assessment of Readiness for Colleges and Careers, or PARCC, to align with Common Core standards adopted by about 40 states.

The PARCC tests are being used in about 11 states and the District of Columbia.

White says some 98.5 percent of eligible students took the PARCC test in the spring. Some areas had higher rates of non-participation than others, he said.

The Louisiana Department of Education will join BESE in developing a policy to address assessment of school quality where non-participation is a factor without giving unfair advantage to schools with higher numbers of non-participants.

The Associated Press contributed to this report.

AUCTION

Continued from page 1

“For years and years, he was the fire chief,” he said. “They used to make fun of him; they would say he’s the fire chief, the police and the Indian chief.”

Holley’s wife, Pam, says T.C. Bloxom would be happy with the turnout.

“It raised money for the church, and I think he’d be happy with that,” she said.

James Madden, host of the event, says about 50 to 60 percent of the bidders were church members; others were friends and family of T.C. Bloxom and area public figures. Madden

and his wife, Lyda, are also members of FUMC.

“It makes me feel good that we had a local gathering, time and fellowship and raised money for a good cause,” he said. “To me that was the great part of the evening. We’re kind of a small community and we support each other.”

More than 30 firearms went up for auction as well as a hunting knife.

T.C. Bloxom served Minden as a firefighter and in law enforcement for more than 70 years. He was a firefighter for 63 years, serving as chief for the last 37. He held the title of Minden police chief for 20 years. He passed away July 12, 2014 at the age of 84.

EVENT

The Anna Pink Ribbon Cancer Foundation will host a breast cancer awareness event Friday at Pink Pratique Mastectomy Boutique located at 731 Main St. in Minden. Information will be shared to raise awareness of breast health programs available in our community and to schedule breast cancer screening and diagnostic appointments. A representative from Martin Luther King Health Center & Pharmacy based in Shreveport will be in the boutique from noon until 3 p.m. to share information about financial assistance available to women who need to schedule a mammogram with Minden Medical Center. Dr. Denise A. Webb, MD will be at the boutique from 1 until 2 p.m. to discuss breast healthcare services and support available at Minden Medical Center.

OBITUARIES

Birdie Dennis

Sis. Birdie B. Dennis was born April 7, 1926 to Mr. John Dennis Sr. and Mrs. Annie Bell Autry Dennis. She was the fourth of 10 children born to this parentage.

At the very young age of 12, she received the Lord as her personal Saviour at Mt. Olive Baptist Church where she grew strong in the Lord. She sang in the church choir and served as the church secretary and treasurer from May 15, 1965 to March 20, 1997. She was a very faithful member until her health failed.



DENNIS

Birdie was educated in the Caddo and Webster Parish school systems. She later moved to Eldorado, Arkansas at an early age. She was employed at the Garrett Hotel where she worked for several years.

She met Robert Shutes of Smackover, Arkansas and to their bond one daughter, Delores was born. Still at a young age, she returned to her hometown of Minden where she was employed as a household technician and a private duty caregiver.

Birdie B. Dennis departed this life on Oct. 13 in Minden. She was a praying mother, loving, giving and kind to her daughter, granddaughter and great grandchildren. She leaves great memories to her daughter Delores Dennis; one granddaughter Kimberly Ann Dennis Cobb-Howard (Josh); four great grandchildren, Jauwayn Dennis-Howard; Jaylen Dennis-Howard, Jermeica Dennis-Howard, and Javeon Dennis-Howard; one brother, Alberta Dennis; one sister, Perleana Coleman nieces, nephews, cousins and a host of other relatives and friends.

Funeral services for Sis. Birdie B. Dennis will be at 2 p.m., Saturday, Oct. 24 at Mt. Olive B.C., with the Rev. Roy Edwards officiating. Interment will follow at Mt. Olive Cemetery.

Visitation will be from 10 a.m. until 7 p.m. Friday, Oct. 23 with family hour from 6 until 7 p.m. in Kennon's Mortuary Chapel.

Email condolences may be sent to kennonsmortuary@suddenlink.net

Jean Esther Lincoln Sharp

Sunrise: Aug. 16, 1949
Sunset: Oct. 15, 2015

Jean Esther (aunt Jeanie) Lincoln Sharp lived and enjoyed a lifetime of independence, love and laughter. She laid a foundation of love and provided an endearing maternal imprint on all she came in contact with. Preceding her in eternal rest, Felton Lincoln (father), Alice Mae Black Lincoln Denson (mother), Ruthie Mae Lincoln (sister), George Ray Lincoln (brother) Robert Earl Lincoln (brother). She leaves to cherish her memory and keep her legacy, the loves of her heart, Byron, Keidra, Teshia, Brittany and Tremel.

Memorial services will be from 1 until 2 p.m. Sunday, Oct.25, 2015 at Tinsley Park (Soccer Field Parking) on Tinsley Boulevard in Bossier City.



SHARP

Executive Ride

24 HOURS A DAY

services include:
taxi, limousine,
transportation
& delivery

NOW SERVING WEBSTER PARISH! Call 318-606-3223

ELECT '72

★★★★★

Harper Edwards

-POLICE JURY DISTRICT 8-
October 24th

Experienced Leader • Desert Storm Veteran
Your Voice on Our Police Jury

Wills Successions

Rick Warren
Attorney at Law

219 Main Street • Minden, LA • 377-8150

You know the price before we start!

FREE
roo killer treatment with the mention of this ad!

- Sewer Repair
- Drain Cleaning
- Water Heater Repair
- Plumbing Repair

CALL TO SCHEDULE YOUR APPOINTMENT!
453-5108

GET UP TO \$1,250* OFF.

IT'S GAME TIME. THE BAD BOY® FALL SALES EVENT IS GOING ON NOW!

0% FINANCING FOR 24 MONTHS AVAILABLE FOR QUALIFIED BUYERS.

*Offer valid on select models. Offer good until 10/31/15. Dealer price not to be beaten.

Fairway Carts Inc.
1620 Hwy 531
Minden, LA 71055
(318) 371-2278

BAADBOY®

GET UP TO \$500* OFF.

FALL INTO SAVINGS! THE E-Z-GO® FALL SALES EVENT IS GOING ON NOW.

0% for 24 months financing available for qualified buyers.

*Offer valid on select models. Offer good until 10/31/15. Dealer price not to be beaten.

Fairway Carts Inc.
1620 Hwy 531
Minden, LA 71055
(318) 371-2278

BIRTHDAYS FOR

FRIDAY, OCTOBER 23, 2015
Ryan Reynolds • Pele • Weird Al

SATURDAY, OCTOBER 24, 2015
Kennith Jones • Shakera Banks • Drake

SUNDAY, OCTOBER 25, 2015
Devin Alex "9" • TyTiana Spencer • Katy Perry

Clara • Craig Robinson • Josh Henderson

OPINION

www.press-herald.com

LETTER TO
THE EDITOR

Props to the Civtans Club

Letter to the Editor:

On behalf of MAR-C Industries, Inc., I would like to take this opportunity to thank the coordinators of the Minden Fair and the Civtans Club. Every year, our consumers look forward to the opportunity to attend the fair. For some of them, it would not be possible without the help of dedicated people like those involved with "Special Kids Day". They made the rides available for our individuals and provided lunch for them.

I also want to say "Thank-You" to the young men from Youth Challenge. Every year, they are available to provide "hands-on assistance" to our consumers.

All of the groups involved in making this day happen are attentive and respectful to all of our consumers, without regard to disability. We are truly grateful for your time, attention and efforts.

Sincerely,
Angelita Police Hudson
Executive Director, MAR-C Industries

EDITORIAL
ROUND UP

The Town Talk on La.'s National Guard growth

Any time a group is ranked in the top 5 nationally, it's newsworthy. So we commend the Louisiana National Guard for being ranked No. 4 nationally for exceeding troop targets and first in the nation in retention.

It is even more commendable when you consider that three years ago Louisiana ranked closer to the bottom than the top — 38th out of 54 states and U.S. territories. The improvement has been strong and steady — much like the guard operation — moving up 18 spots to 20th in 2013, then 15th in 2014. As of the close of the 2015 fiscal year, the Louisiana National Guard had 9,650 soldiers, which is 101.2 percent of their target goal. The Air National Guard also surpassed its goal of 1,390 airmen with 1,496 airmen (107 percent).

The growth is even more impressive when one considers that the National Guard, like all U.S. military forces, is a volunteer force and that admission standards have steadily increased over the years.

There was a time not so long ago when National Guardsmen were not taken seriously as soldiers. The term "weekend warrior" came from the organization's one weekend per month and two weeks in the summer drill schedule.

While reservists still follow that schedule, the expectation is that the soldiers will maintain a state of readiness as close to that of full-time active duty soldiers as possible. The reality is that as the Defense Department has steadily decreased the size of the regular Army and other military divisions, the role of the National Guard has steadily increased.

National Guard members are still on call and available to help out in-state emergencies, such as hurricanes, or in the event of major civil unrest, as was seen in Ferguson, Missouri. But it has become increasingly routine for National Guard units to be deployed overseas to fight and provide support in combat as active duty soldiers.

National Guard members undergo the same rigorous training as regular Army soldiers. In fact, the Army just launched an overhaul of their Basic Training program that places an increased emphasis on combat readiness with the expectation that the majority of those trained will be deployed in combat.

Another bright spot in this story was revealed in a remark by Col. Kenneth Donnelly, commander of the Recruiting and Retention Command. "It's great to see patriotism as the main reason people want to join an all-volunteer force."

With bickering and divisiveness dominating so many headlines, it's a relief to know so many of our young people have not lost their patriotic principles.

Congratulations to the Louisiana National Guard on their ranking. And to the men and women proudly wearing their uniform, thank you for your service.

MINDEN PRESS-HERALD

203 GLEASON STREET, MINDEN, LOUISIANA 71055
318-377-1866 • www.press-herald.com

USPS NUMBER 593-340

DAVID A. SPECHT JR., *President*

GREGG PARKS, *Publisher*
gparks@press-herald.com

JORDAN WILSON, *Community Editor*
community@press-herald.com

CAROL ANDREWS, *Chief Financial Officer*
carol@press-herald.com

TELINA WORLEY, *Advertising Manager*
advertising@press-herald.com

BRUCE FRANKLIN, *Managing Editor*
bruce@press-herald.com

PETE COVINGTON, *Circulation Manager*
circulation@press-herald.com

BLAKE BRANCH, *Sports*
blake@press-herald.com

DENNIS PHILBAR, *Production Director*
production@press-herald.com

The Minden Press-Herald is published Monday through Friday afternoon by Specht Newspapers, Inc. at 203 Gleason Street, Minden, Louisiana 71055. Telephone 377-1866. Entered as Periodicals at the Post Office as Minden Press-Herald, P.O. Box 1339, Minden LA 71058-1339. Subscription rate: In-parish home delivery \$11 per month; \$33 per three months; \$66 per six months; \$99 per nine months and \$132 per year. Out-of-parish mail delivery is \$14.50 per month; \$43.50 per three months; \$87 per six months; \$130.50 per nine months and \$174 per year. POSTMASTER: Send address changes to Minden Press-Herald, P.O. Box 1339, Minden, LA 71058-1339.



PERSPECTIVE

Giving sanctuary to anarchy

Something absolutely appalling took place this week in the United States Senate. The so-called 'world's greatest deliberative body' had a choice between protecting American citizens ... and utter lawlessness. Lawlessness prevailed!

44 Democratic senators and one Republican blocked a bill that would punish cities that give sanctuary to illegal aliens, even those wanted for a serious crime. The sanctuary city bill was attached to Kate's Law, which mandates prison terms for illegal aliens who return to the USA after committing aggravated felonies.

Meanwhile, San Francisco's Board of Supervisors proudly voted to retain its insane sanctuary policies. That is the very city, of course, where 32-year-old Kate Steinle was murdered by an illegal alien who simply should not have been in this country.

One of the supervisors, Malia Cohen, displayed her great bravery by declaring, 'I am not afraid of Fox News.' The audience cheered like trained seals brought in from San Francisco Bay. Ms. Cohen has another reason to be extremely proud - last year she sponsored a bill prohibiting employers and landlords from asking about an applicant's criminal history.

She also voted against a measure that would have prevented people from lying about on city sidewalks, although presumably not in front of the \$581,000 condo she owned before it was foreclosed. This woman has a real

knack for protecting the criminal class.

During an appearance on The Factor after those votes, Kate Steinle's parents expressed their utter disgust with what happened in San Francisco and Washington. Disgust, but not surprise. Sadly, we are accustomed to being slapped around by liberal politicians who never pay a price for their votes.

Juan Francisco Sanchez-Lopez, charged with the murder of Kate, is a career criminal who has used more than 30 aliases and has been deported to his native Mexico time and again. During his most recent return to the USA, he picked San Francisco because that city is known for leniency toward illegals. That's where he broke into a car, stole a handgun, and recklessly fired that gun in a public place, killing Kate Steinle.

Astoundingly, the New York Times portrays this repeat criminal as a choir boy who apparently got lost on the way to church: 'Mr. Lopez-Sanchez was a homeless man,' the Times tearfully lamented, 'with drug convictions but no record of violent crime; the bullet he fired was found to have ricocheted off the pier, suggesting that he had not targeted anyone.'

So the Times, rather than worrying about cops being shot and killed in Harlem, is actually defending this felonious thug in San Francisco. Meanwhile, the odious supervisor Malia Cohen had the audacity to claim that her city's sanctuary policy played no role in Kate Steinle's death. And another supervisor, David Campos, worried about 'scapegoating immigrants.' These lefty loons genuinely care more about killers than victims, and it is utterly sickening.

But don't wait for President

Obama to criticize his party's decision to side with sanctuary cities and counties, which now number more than 300. He doesn't hesitate to weigh in when a boy designs a clock that resembles a bomb, but he is conspicuously silent when localities protect ticking human time bombs. President Obama is sworn to uphold the law of the land, but he does not uphold immigration law.

It is inevitable that another innocent person will be killed or raped or maimed by an illegal felon who has returned to the USA after being deported. Those are the miscreants who would be targeted by Kate's Law - we are not talking about gardeners and chambermaids and plumbers. When it happens, Malia Cohen and her pals might want to answer a few questions.

Right now the political establishment is pulling out its hair, wondering how a guy like Donald Trump could be leading the race for the Republican nomination. Perhaps they should look to Capitol Hill in the East and Telegraph Hill in the West. Democrats in the Senate, led by Harry Reid, endorse laws that protect violent felons. And city 'leaders' in San Francisco express great pride in doing the same thing.

Yes, things in much of America are totally out of control. Some liberal precincts resemble Tombstone, Arizona, that infamously lawless town in the Wild West. And many people find themselves wondering when a new sheriff will finally show up to restore some order. Wyatt Earp, a nation turns its frightened eyes to you.

Bill O'Reilly is a talk show host on Fox News. His column runs on Friday in the Minden Press-Herald.

EDITORIAL
ROUND UP

The Houma Courier on the oil industry in the state

The nation's most prominent economist spoke last week to a group of government and business officials, and his message was sobering and troublesome: Our region could lose as many as 2,000 jobs over the next year.

Those job losses would come on top of those that have already hit us since the price of oil collapsed more than a year ago.

In June 2014, the price of oil hit a high of \$115 per barrel.

This week, it is around \$47.

In a region that relies as heavily as we do on the oil and gas industry, obviously that will have a negative impact on jobs and economic activity in general.

Fortunately, that impact did not happen right away. Instead, it has slowly come to pass over the last year.

But LSU economist Loren Scott told the South Louisiana Economic Council on Thursday that the pain will continue even as oil prices begin to recover.

That's because the effects of any price change are delayed. It takes time for oil companies to react to the changes and get more or fewer workers on the job in the oilfield.

So we didn't get the slowdown immediately, and the recovery won't be immediate either.

That's the bad news.

The good news, though, is that recovery is within sight.

Scott predicts that the jobs picture will begin improving the year after next, with our region gaining 1,000 jobs as prices continue to rise.

There will be pain, of course, particularly for the workers and their families who are affected by layoffs and slowdowns.

It is important, however, for everyone in our region to remember that the bad times, just like great times of the past, won't last forever.

Oil prices run in cycles. That doesn't make the layoffs less painful. And it doesn't mean the economy doesn't suffer when times are bad.

What it does mean, though, is that the slowdowns eventually come to an end, prices stabilize and the good times return.

We are blessed with bountiful natural resources.

We collect and move much of the energy that powers our entire nation.

Our economy thrives, on the whole, because we are so important to the oil and gas industry.

But the reliance we have on that industry comes with some uncertainty, and times like these remind us of the vulnerability we have.

It could be much worse. We could live in a depressed region where jobs have left and are not likely to ever return.

Instead, we have a cyclical industry that rises and falls with wide changes in oil prices. We are in a down cycle, but an up cycle is on the horizon.

We just have to look ahead to better times.

Share
your
thoughts.

Email Letters
to the Editor to
bruce@press-herald.com.

Around Town

Oct. 13-31

First United Methodist's "Pumpkin Patch" featuring 1,500 pumpkins will be open throughout the month. "Football in the patch" will be from 5 until 7 p.m. Oct. 17, The LSU game will be shown via projector. There will also be games and food. Attendees should bring own chairs. "Pumpkin Shine" will be Oct. 24 from 3 until 5 p.m. with food and carnival games. For more information contact First United Methodist's main office.

Oct. 24

Iota Rho Omega Chapter of Alpha Kappa Alpha sorority, in cooperation with Partners for Healthy Eating, will sponsor a Food, Fun and Fitness Day from 10 a.m. until noon at St. Rest Baptist Church Family Life Center. Activities are open to all children grades K-12. Parental supervision is required. There will be games, prizes and snacks. For more information contact Ora Rice at 377-6842.

Mt. Comfort Baptist Church's Husband and Wife program will be at 6 p.m.

Oct. 25

HALLELUJAH! Many Voices One Song Musical will be at Union Grove Baptist Church at 3 pm. Special guest will be House of Peace Ministries. Other guest will be soloists and choirs from the surrounding area.

Galilee Missionary Baptist Church's Men's Day program will be at 8 a.m. with guest speaker Pastor Allen Jackson.

Miller Chapel Baptist Church's 114th anniversary will be celebrated along with Family and Friend day at 3 p.m. with guest speaker the Rev. Donnie Johnson.

Mt. Calm Baptist Church's 119th church anniversary will be celebrated at 10:30 a.m. The guest speaker will be the Rev. F. Bernard Mitchell, At 5 p.m. there will be a Musical presented by the Mt. Calm Mass Choir. The guest soloist will be the Rev. C D Pate.

Lakeview United Methodist Church will host an annual Fall Fest from 4 until 6 p.m. on the church yard at Turner's Pond. Free games for the children, free face-painting, a free cup cake walk, a free bounce house, free soft drinks and lots of fun. There will also be a silent auction featuring cakes and other desserts prepared by Lakeview cooks. Non-perishable food items are welcome and will be donated to UCAP. There will also be a "Pumpkins on the Pond" contest for all children who wish to bring a decorated or carved pumpkin.

Fresh Fire Ministries will be having their Founder's Day Program honoring Pastor Jacques & 1st Lady Alysia Mitchell at 4 p.m.

Gray - Birky engaged to marry



Courtney Nicole Gray of Minden and Patrick Hunter Birky of Shreveport are proud to announce their engagement and upcoming wedding.

The bride-elect is the daughter of Terry and Carla Gray of Minden. She is the granddaughter of Sammy and Annette Thrash of Minden and Mary Gray of Benton and the late Leon Gray of Sibley.

Courtney is a 2010 Minden High School graduate. She graduated from Bossier Parish Community College in 2012 with an associate of general studies, and then in 2014 she obtained an associate of applied science with a focus in physical therapy assistant. She is currently employed as a physical therapy assistant at Senior Care Center at Spring Lake Rehabilitation Center.

The groom-elect is the son of Debby Birky and Sammy Mijalis of Shreveport as well as Bruce and Tina Birky of Lake In the Hills, Illinois. He is the grandson of Oral and Patricia Link of Shreveport and the late William and Janet Birky of Normal, Illinois.

Patrick is a 2009 Captain Shreve High School graduate. In 2012 he obtained Emergency Medical Technician certification at Bossier Parish Community College. He currently works as a firefighter and EMT at the Bossier City Fire Department.

The wedding will be at 6 p.m., Dec. 5, 2015 at Eastside Baptist Church in Minden, with a reception at Lakehouse Event Center at the Villagio in Bossier immediately following the ceremony.

MAR-C Industries is raffling off a 65-quart Yeti cooler to help raise funds for a down payment to purchase a van to help with transporting their workers. The drawing is Nov. 10 and tickets are \$10. Call 377-4774 to purchase tickets. You do not have to be present to win.

Lunch Menu

Tuesday, Oct. 27

Roasted Chicken, Steamed Brown Rice/Gravy, Turnip Greens, Yam Patty, WG Cornbread, Fresh Fruit Cup, Milk

Wednesday, Oct. 28

Beef Steak Fingers, Mashed Potatoes/Gravy, Green Beans, Carrots, Fruit Cocktail, Rolls, Milk

Thursday, Oct. 29

Hot Dog/Chili Dog, Baked Beans, Potato Wedges, Mandarin Oranges, Milk

Friday, Oct. 30

Hamburger, Baked Fries, Sandwich Fixings, Baked Beans, Slice Peaches, Carnival Cookie, Milk



/mindenph

For News Updates


Like Us!

SCAN WITH



TO LIKE

Re-Elect
Jerri M. Lee #74
Police Jury District 9



"I continue to have the Ability, Commitment, and Availability to Represent District 9. Your concerns and issues are mine also."

<p>2008 Chevrolet HHR Recent Trade-In *Call 639-9505*</p> <p>ONLY \$7,995 +TTL</p> 	<p>2011 GMC Terrain Great Gas Mileage • Power Sunroof *Call 639-9505*</p> <p>\$16,995 +TTL</p> 	<p>2008 Cadillac CTS Ride in Style! *Call 639-9505*</p> <p>ONLY \$12,995 +TTL</p> 
<p>2013 Chevrolet Malibu Only 36K, One Owner Miles! New Tires!</p> <p>\$16,995 +TTL</p> 	<p>2008 Dodge 3/4 Ton Cummins • Adult Driven • Extra Clean</p> <p>\$25,695 +TTL</p> 	<p>2008 Mercury Grand Marquis Only 52K Actual Miles! • New Tires</p> <p>\$10,995 +TTL</p> 
<p>308 Broadway Minden, LA 639-9505</p> <p>BROWN</p> <p>WE BUY GOOD, CLEAN USED CARS & TRUCKS!!</p> <p>1228 Homer Rd. Minden, LA 377-9855 www.brownbrown.com</p>		
		

Virus Removal, Parts Replacements & More Starting @ \$69.99



727 Main Street | Minden | 299-3856
www.gorillatechandrepair.com

PARISH WIDE MAINTENANCE TAX RENEWAL PROPOSITION (MILLAGE RENEWAL)

Shall the Webster Parish School District of Webster, Louisiana (the "District"), continue to levy and collect a special tax of two and eighty-two hundredths (2.82) mills on all property subject to taxation in the District (an estimated \$729,400 reasonable expected at this time to be collected from the levy of the tax for an entire year), for a period of ten (10) years, beginning with the year 2016 and ending with the year 2025, for the purpose of giving additional support to public schools in the Parish of Webster, including acquiring, constructing, improving, maintaining or operating the public school system of the District?

Please get out and VOTE on Saturday, October 24, 2015.

SPORTS

 www.press-herald.com

HIGH SCHOOL FOOTBALL

Thursday Knight lights

NORTH WEBSTER MAULS MANSFIELD, 48-6, IN 1-3A MATCHUP



BLAKE BRANCH
blake@press-herald.com

MANSFIELD - In front of a national television audience and a large homecoming crowd, the visiting North Webster Knights sent a message that district 1-3A is their's for the taking with a dominant 48-6 road triumph.

Coming into Thursday's game, the Knights were concerned with the Wolverines size up front and Jaylin Wilson's playmaking ability at quarterback.

Neither proved to be very effective against the three-headed back-field monster of Devin White, Jalen Smith and T.J. Hawthorne, or a ballhawking Knights defense led by White and fellow linebackers, Blake Atchley and Ke'Untra Gipson.

"It was a big win," North Webster head coach John Ware said. "We were ready to play tonight and jumped on them from the start. Our kids played aggressive and excited tonight."

North Webster received to start the game and was forced to punt after gaining one first down on their opening possession. The Knight's defense



Devin White finished with three rushing touchdowns and two interceptions to lead the Knights.

North Webster running back Devin White returns a punt for touchdown in a game earlier this season against Homer. White had three rushing touchdowns Thursday night in a 48-6 win over Mansfield. Lori Hughes/Courtesy

responded with Rico Gonzalez coming up with a fumble recovery on a botched snap, and on the next play White went 20 yards untouched into the endzone to make it 7-0 Knights.

On Mansfield's next

offensive possession, Blake Atchley stepped in front of a Jaylin Wilson pass and darted around the left side into the endzone for a pick six that put North Webster on top, 14-0.

North Webster kept

attacking, this time through the air, as Atchley capped another turnover-aided possession with a three-yard touchdown reception to make it 21-0.

The Wolverines, perhaps sensing the game

slipping away, attempted a reverse on the ensuing kickoff, but the handoff was bobbled and the ball recovered by the Knights.

With another short field it didn't take White long to find the endzone

for his second touchdown of the night, this one a two-yard score.

Quarterback Cameron Huff tossed his second touchdown of the night in the second quarter to sophomore T.J.

Hawthorne to make the score 34-0, and after the fifth turnover of the half by Mansfield, White ended all homecoming hope with his third short touchdown of the night to make it 41-0.

"We're finally gelling a little bit on offense," Ware said. "You have to pick your poison and hopefully that will continue over the next few weeks."

The second half was played with a running clock, and North Webster exited Mansfield with a victory that provides plenty of confidence heading into next week's matchup with district 1-3A's No. 2 team, Green Oaks.

"This is the time of the year to do it," Ware said. "We've peaked this time of year in the past and I hope we're getting ready to do that again. Tonight was certainly a great start."


Wide receiver Wesley Franklin, the Knights leading receiver, went down with an apparent ankle injury in the first quarter. Ware certainly hopes his 6'4" playmaker will be okay going forward, but isn't sure of the severity as of now.

"I'm not real sure what the deal is right now," Ware said. "We're hopeful it's just an ankle sprain."

FOOTBALL EXPERTS PICK 'EM

						
This week's games	Gregg Parks	Louis Mitchell	Blake Branch	Curtis Mays	Zach Specht	Pete Covington
Minden vs. Northwood	Minden	Minden	Minden	Minden	Minden	Minden
Glenbrook vs. Riverdale	Glenbrook	Glenbrook	Glenbrook	Glenbrook	Riverdale	Riverdale
Lakeside vs. Red River	Red River	Red River	Red River	Red River	Red River	Red River
LSU vs. W. Kentucky	LSU	LSU	LSU	LSU	LSU	LSU
LaTech vs. Middle Tenn.	LaTech	LaTech	LaTech	LaTech	LaTech	LaTech
Auburn vs. Arkansas	Arkansas	Auburn	Auburn	Arkansas	Arkansas	Auburn
Tennessee vs. Alabama	Alabama	Alabama	Alabama	Alabama	Alabama	Alabama
Texas A&M vs. Ole Miss	Ole Miss	Ole Miss	Texas A&M	Ole Miss	Texas A&M	Ole Miss
Mississippi St. vs. Kentucky	Miss. St.	Miss. St.	Mississippi State	Miss. State	Kentucky	Kentucky
Vikings vs. Lions	Vikings	Vikings	Lions	Vikings	Vikings	Vikings
Patriots vs. Jets	Patriots	Patriots	Patriots	Patriots	Patriots	Patriots
Texans vs. Dolphins	Dolphins	Dolphins	Dolphins	Dolphins	Texans	Texans
Raiders vs. Chargers	Chargers	Chargers	Chargers	Chargers	Raiders	Chargers
Steelers vs. Chiefs	Steelers	Steelers	Chiefs	Steelers	Chiefs	Steelers
Cowboys vs. Giants	Cowboys	Cowboys	Giants	Giants	Giants	Cowboys
Colts vs. Saints	Colts	Saints	Colts	Saints	Colts	Colts
Last week	14-2	10-6	11-5	11-5	9-7	11-5
Overall	81-31	81-31	80-32	77-35	77-35	67-45

What could you do with the amazing savings from Webster Printing?



Visit the beach Go shopping
Buy a car Have a party

Let us handle your paperwork!



WEBSTER PRINTING COMPANY
716 BROADWAY • MINDEN, LA 71055
P: (318) 377-8518 • F: (318) 377-8530
WEBSTERPRINTING@SUDDENLINK.NET

COLLEGE FOOTBALL

Harris using his critics as motivation



BATON ROUGE — LSU quarterback Brandon Harris makes it clear that he reads and watches the news, and knows just about everything being said about him.

He doesn't see the need to be one of those players who contends — honestly or not — that he pays no attention to the media.

"Apparently, people think I can't throw," Harris said after passing for 202 yards and two touchdowns against in a victory over Florida last weekend that boosted the unbeaten Tigers (6-

0) to fifth in the national rankings.

"It's nothing but motivation to me," Harris continued, adding that he sometimes makes a point before games of reminding his receivers what certain analysts have said about LSU's lack of a passing game. "I play with a chip on my shoulder every single week."

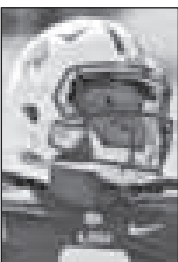
"This team knows how talented we are passing the ball and everybody knows what I can do throwing the football," Harris continued. "It really hurts when people say that all we have is a running game and this and that. That's so much motivation. For those that keep saying that, keep doubting me. I love it."

Harris, a sophomore from Bossier City, Louisiana, won the starting job this summer

and has, in the words of coach Les Miles, done "exactly" what LSU needed. For the most part, that has been managing an offense featuring running back Leonard Fournette and produc- i n g 3 2 5 . 5 y a r d s rushing per game as a team.

I n three of L S U ' s first four games, Harris passed for fewer than 100 yards. A game against heavy underdog Eastern Michigan may have been the low point, when Harris was victimized by a couple drops in or near the end zone and finished 4 of 15 for 80 yards.

But in each of LSU's



HARRIS

recent victories over South Carolina and Florida, Harris eclipsed the 200-yard mark to raise his season average to 135.3 yards passing per game. This week, LSU hosts Western Kentucky, whose quarterback, Brad Doughty, averages 378.7 yards passing.

"You don't play football at risk of injury without playing with a little passion and caring about how you're received," Miles said this week when asked about Harris' inclination to engage his critics publicly. "But he needs not to worry about that at all."

"The opinions that matter will all come from ... that big building that we practice in," Miles continued. "Others don't know. ... So he needs to just do the things that he's been doing and not try to

exceed the play call."

Harris appeared to exceed one play call shortly before the first half last week, but it worked out.

After being flushed from the pocket, Harris slipped a tackle while rolling right and launched a deep pass that Malachi Dupre hauled in for a 50-yard touchdown.

"He had a few guys he could have thrown the ball to," Dupre said after reviewing film of the third-down play. "He was smart and realized that at the worst-case scenario, it could have been an interception, but it would have just been like a punt that they would have had to do anyway."

So Brandon's just becoming a great quarterback and a leader."

Dupre said there have been times when he wanted to tell Harris to

ignore the critics, but the receiver said he has also come to appreciate Harris' ability to handle criticism and make it work for him.

"He likes to step up to challenges and I feel like he keeps hearing a lot of noise outside of the team — people talking about how he can't throw the ball — just because we weren't throwing the ball as much the first couple games of the season and we didn't have that much success throwing the ball in the first couple games," Dupre said. "I think that bothered him a lot and it just drives him more and more."

"I see how hard he works. He's only getting better," Dupre added. "He made some really beautiful throws this weekend and I think he just wants to keep proving people wrong."

CROSS COUNTRY

Lander, Greene win at Menard



Special to the Press-Herald

ALEXANDRIA - The Lakeside Warrior Cross-Country teams once again performed at a very high level at the Menard Cross Country meet in Alexandria.

The girls team placed fourth out of 10 entries. The boys' team was fifth out of 14 teams. Most every performer ran a personal best time over the hilly three-mile course.

Alisa Lander lead the girls with an outstanding time of 18:07 which gave her the championship by 33 seconds over Menard's Claire Vaughn at 18:40. Placing 22nd was Kerrigan Zachary at 21:59. Other finishers for the ladies were Kaylee Davis (45th, 23:42); Tynia Joiner (47th, 23:47); Angelina

Futch (48th, 23:47.80); Alaina Stiles (52nd, 23:56); and Egypt Anderson (69th, 24:42). There were 99 runners in this division.

Senior Eric Greene cruised to a 19 second victory in the boys' division running a 15:59. Placing fifth was Cody Robinson who ran a 16:40. Tyler Davis garnered the 21st spot with a 17:56. Returning from an injury, Logan Bailey placed 44th at 19:25. Austin Nunn finished 101st at 22:35. Trent Gordon was 125th at 25:48. There were 131 male runners.

Former Lakeside star, Enrique Soto, had his most impressive race as a collegian, running a 25:39 8K at the Alabama Crimson Classic. This placed him 44th out of 262 runners and made him the number one runner for the McNeese Cowboy team. He averaged 5:08 per mile in this race.

Coach Dan Grantham's Lakeside teams will next be in action at the NSU State pre-meet on Saturday before hosting the Ant Hill Classic on October 31, at the Minden Rec Complex.

HOCKEY

Mudbugs making a comeback

It's official — the Bossier-Shreveport Mudbugs will be back on the ice in 2016.

The announcement came Thursday during a press conference with Encompass Sports and the State Fair of Louisiana. The Mudbugs will return to their first home of the Hirsch Coliseum and will play in the North American Hockey League (NAHL).

The Bossier-Shreveport Mudbugs formed in 1997, creating

a dedicated following, but ceased operations in 2011 following that season's President's Cup Championship citing lack of season ticket sales.

The team played in the CenturyLink Center (formerly CenturyTel Center) from 2000 until ceasing operations.

The NAHL is the only USA Hockey-sanctioned Tier II Junior league. The NAHL features student athletes ages 16-20 with the goal of playing in college.

FALL FESTIVAL

First Baptist Minden

Wednesday, October 28

FLC Gym & Parking Lot

Family Fun for All Ages!

Minimal Cost on Food & Drink Items

Carnival from 5:30-7:30 pm

DOOR PRIZES
must be present to win

- Free Admission
- Dessert Walk
- Costume Contest
- Carnival Games
- Inflatable Games
- Turkey Legs, Nachos & More!
- 18 Foot Slide
- Dunking Booth
- Kiddie Cow Train
- Pony Ride

COME JOIN US FOR A NIGHT OF FAMILY FUN!

HEBERT'S

Town and Country

FORD • LINCOLN

1-20 & Sibley Road
Minden, LA
318-377-8694
www.hebertsford.com

TAKE \$9,000 OFF MSRP ON ANY NEW

2015 F-150 XLT Supercrew

4x4

IN STOCK

MSRP \$48,250
Hebert's Discount \$3,750
Retail Cash \$1,500
Bonus Cash \$2,500
Ford Credit Cash \$750
Special Cash \$500

\$39,250⁰⁰

SAVE \$9,000

Come see us tomorrow at our Big Sale on Saturday!

SAMPLE BALLOT

www.press-herald.com

OCT. 24 ELECTION IN WEBSTER PARISH

WILL YOU VOTE FOR IT?

SHOWN ARE BALLOTS AS THEY WILL APPEAR IN THE VOTING BOOTH. SOME BALLOT ITEMS ARE ELIGIBLE ONLY TO CERTAIN VOTERS OF THE PRECINCT; DEPENDING ON YOUR ADDRESS, YOU MIGHT NOT BE ELIGIBLE TO VOTE ON CERTAIN ITEMS.

IF YOU DO NOT KNOW YOUR DESIGNATED PRECINCT, REFER TO YOUR VOTER REGISTRATION CARD OR VISIT WWW.GEAUXVOTE.COM TO SEARCH BY ADDRESS.

LOUISIANA GOVERNOR

Vote for one.

SCOTT A. ANGELLE

Republican

1

☐

BERYL BILLIOT

No Party

2

☐

"JAY" DARDENNE

Republican

3

☐

CARY DEATON

Democrat

4

☐

JOHN BEL EDWARDS

Democrat

5

☐

JEREMY "JW" ODOM

No Party

6

☐

ERIC PAUL ORGERON

Other

7

☐

S L SIMPSON

Democrat

8

☐

DAVID VITTER

Republican

9

☐

LIEUTENANT GOVERNOR

Vote for one.

ELBERT LEE GUILLORY

Republican

10

☐

MELVIN L. "KIP" HOLDEN

Democrat

11

☐

"BILLY" NUNGESSER

Republican

12

☐

JOHN YOUNG

Republican

13

☐

SECRETARY OF STATE

Vote for one.

"TOM" SCHEDLER

Republican

14

☐

"CHRIS" TYSON

Democrat

15

☐

ATTORNEY GENERAL

Vote for one.

GERALDINE "GERI" BALONEY

Democrat

16

☐

JAMES "BUDDY" CALDWELL

Republican

17

☐

ISAAC "IKE" JACKSON

Democrat

18

☐

"JEFF" LANDRY

Republican

19

☐

"MARTY" MALEY

Republican

20

☐

TREASURER

Vote for one.

JOHN KENNEDY

Republican

21

☐

JENNIFER TREADWAY

Republican

22

☐

COMMISSIONER OF AGRICULTURE AND FORESTRY

Vote for one.

"CHARLIE" GREER

Democrat

23

☐

ADRIAN "ACE" JUTTNER

Green

24

☐

JAMIE LABRANCHE

Republican

25

☐

MICHAEL G. "MIKE" STRAIN

Republican

26

☐

COMMISSIONER OF INSURANCE

Vote for one.

"JIM" DONELON

Republican

27

☐

DONALD HODGE JR.

Democrat

28

☐

CHARLOTTE MCGEHEE

Democrat

29

☐

MATT PARKER

Republican

30

☐

BESE DISTRICT 4

Vote for one.

TONY DAVIS

Republican

38

☐

MARY JOHNSON HARRIS

Republican

39

☐

GLYNIS JOHNSTON

Republican

40

☐

STATE SENATOR 36TH SENATORIAL DISTRICT

Vote for one. All precincts.

HENRY BURNS

Republican

54

☐

RYAN GATTI

Republican

55

☐

TODD HOLLENSHEAD

Democrat

56

☐

POLICE JUROR - DISTRICT 4

Vote for one.

"BRUCE" COMPTON

Republican

65

☐

RANDY THOMAS

Republican

66

☐

POLICE JUROR - DISTRICT 5

Vote for one.

BERNARD HUDSON

Democrat

67

☐

PERRY KIRKLAND

Republican

68

☐

POLICE JUROR - DISTRICT 6

Vote for one.

"JIM" BONSALL

Democrat

69

☐

RONALD DOUGLAS SALE

Other

70

☐

POLICE JUROR - DISTRICT 8

Vote for one.

NICHOLAS "NICK" COX

No Party

71

☐

HARPER EDWARDS

Republican

72

☐

POLICE JUROR - DISTRICT 9

Vote for one.

BEVERLY "DEBBIE" KENNON

Democrat

73

☐

JERRI M. LEE

Democrat

74

☐

POLICE JUROR - DISTRICT 12

Vote for one.

GEORGE FULLER

Democrat

75

☐

BRYAN LANGFORD

No Party

76

☐

DUSTIN MOSELEY

Other

77

☐

REBECCA SHELLEY SHERRARD

Republican

78

☐

VOTER INFORMATION
ONLINE AT
GEAUXVOTE.COM

PROPOSED CONSTITUTIONAL AMENDMENTS

Amendment No. 1

Do you support an amendment to rename the Budget Stabilization Fund to the Budget and Transportation Stabilization Trust; to authorize the mineral revenue base to be increased every five years; to create the Budget Stabilization Subfund as a subfund in the Trust, to be funded with mineral revenues until reaching a maximum balance of five hundred million dollars, to be appropriated and used when the state has a deficit; to create the Transportation Stabilization Subfund as a subfund in the Trust, to be funded with mineral revenues until reaching a maximum balance of five hundred million dollars, to be appropriated and used for planning, design, construction, and maintenance connected with the state highway program, with twenty percent dedicated for use by the Louisiana Intermodal Connector Program; and to provide for the interruption of deposits into the Budget Stabilization Subfund and the Transportation Trust Subfund the year that the state has a deficit and the following year with the resumption of deposit of mineral revenues in the Budget and Transportation Stabilization Trust thereafter?

YES

☐

NO

☐

Amendment No. 2

Do you support an amendment to authorize the investment of funds for a state infrastructure bank to be used solely for transportation projects?

YES

☐

NO

☐

Amendment No. 3

Do you support an amendment to allow any legislation regarding the dedication of revenue, rebates, and taxes to be considered during a fiscal legislative session?

YES

☐

NO

☐

Amendment No. 4

Do you support an amendment to specify that the ad valorem property tax exemption for public lands and other public property shall not apply to land or property owned by another state or a political subdivision of another state?

YES

☐

NO

☐

PROPOSITION

Parishwide School District Proposition (Millage Renewal)

Shall the Webster Parish School District, Parish of Webster, Louisiana (the "District"), continue to levy and collect a special tax of two and eighty-two hundredths (2.82) mills on all property subject to taxation in the District (an estimated \$729,400 reasonably expected at this time to be collected from the levy of the tax for an entire year), for a period of ten (10) years, beginning with the year 2016 and ending with the year 2025, for the purpose of giving additional support to public schools in the Parish of Webster, including acquiring, constructing, improving, maintaining or operating the public school system of the District?

YES

☐

NO

☐

POLLS OPEN SATURDAY,
OCT. 24 AT 7 A.M. AND
CLOSE AT 8 P.M.

SAMPLE BALLOT

 www.press-herald.com

OCT. 24 ELECTION IN WEBSTER PARISH

WILL YOU VOTE FOR IT?

SHOWN ARE BALLOTS AS THEY WILL APPEAR IN THE VOTING BOOTH. SOME BALLOT ITEMS ARE ELIGIBLE ONLY TO CERTAIN VOTERS OF THE PRECINCT; DEPENDING ON YOUR ADDRESS, YOU MIGHT NOT BE ELIGIBLE TO VOTE ON CERTAIN ITEMS.

IF YOU DO NOT KNOW YOUR DESIGNATED PRECINCT, REFER TO YOUR VOTER REGISTRATION CARD OR VISIT WWW.GEAUXVOTE.COM TO SEARCH BY ADDRESS.

LOUISIANA GOVERNOR

Vote for one.

SCOTT A. ANGELLE

Republican

1

☐

BERYL BILLIOT

No Party

2

☐

"JAY" DARDENNE

Republican

3

☐

CARY DEATON

Democrat

4

☐

JOHN BEL EDWARDS

Democrat

5

☐

JEREMY "JW" ODOM

No Party

6

☐

ERIC PAUL ORGERON

Other

7

☐

S L SIMPSON

Democrat

8

☐

DAVID VITTER

Republican

9

☐

LIEUTENANT GOVERNOR

Vote for one.

ELBERT LEE GUILLORY

Republican

10

☐

MELVIN L. "KIP" HOLDEN

Democrat

11

☐

"BILLY" NUNGESSER

Republican

12

☐

JOHN YOUNG

Republican

13

☐

SECRETARY OF STATE

Vote for one.

"TOM" SCHEDLER

Republican

14

☐

"CHRIS" TYSON

Democrat

15

☐

ATTORNEY GENERAL

Vote for one.

GERALDINE "GERI" BALONEY

Democrat

16

☐

JAMES "BUDDY" CALDWELL

Republican

17

☐

ISAAC "IKE" JACKSON

Democrat

18

☐

"JEFF" LANDRY

Republican

19

☐

"MARTY" MALEY

Republican

20

☐

PROPOSED CONSTITUTIONAL AMENDMENTS

Amendment No. 1

Do you support an amendment to rename the Budget Stabilization Fund to the Budget and Transportation Stabilization Trust; to authorize the mineral revenue base to be increased every five years; to create the Budget Stabilization Subfund as a subfund in the Trust, to be funded with mineral revenues until reaching a maximum balance of five hundred million dollars, to be appropriated and used when the state has a deficit; to create the Transportation Stabilization Subfund as a subfund in the Trust, to be funded with mineral revenues until reaching a maximum balance of five hundred million dollars, to be appropriated and used for planning, design, construction, and maintenance connected with the state highway program, with twenty percent dedicated for use by the Louisiana Intermodal Connector Program; and to provide for the interruption of deposits into the Budget Stabilization Subfund and the Transportation Trust Subfund the year that the state has a deficit and the following year with the resumption of deposit of mineral revenues in the Budget and Transportation Stabilization Trust thereafter?

YES

☐

NO

☐

Amendment No. 2

Do you support an amendment to authorize the investment of funds for a state infrastructure bank to be used solely for transportation projects?

YES

☐

NO

☐

Amendment No. 3

Do you support an amendment to allow any legislation regarding the dedication of revenue, rebates, and taxes to be considered during a fiscal legislative session?

YES

☐

NO

☐

Amendment No. 4

Do you support an amendment to specify that the ad valorem property tax exemption for public lands and other public property shall not apply to land or property owned by another state or a political subdivision of another state?

YES

☐

NO

☐

PROPOSITION

Parishwide School District Proposition (Millage Renewal)

Shall the Webster Parish School District, Parish of Webster, Louisiana (the "District"), continue to levy and collect a special tax of two and eighty-two hundredths (2.82) mills on all property subject to taxation in the District (an estimated \$729,400 reasonably expected at this time to be collected from the levy of the tax for an entire year), for a period of ten (10) years, beginning with the year 2016 and ending with the year 2025, for the purpose of giving additional support to public schools in the Parish of Webster, including acquiring, constructing, improving, maintaining or operating the public school system of the District?

YES

☐

NO

☐

TREASURER

Vote for one.

JOHN KENNEDY

Republican

21

☐

JENNIFER TREADWAY

Republican

22

☐

COMMISSIONER OF AGRICULTURE AND FORESTRY

Vote for one.

"CHARLIE" GREER

Democrat

23

☐

ADRIAN "ACE" JUTTNER

Green

24

☐

JAMIE LABRANCHE

Republican

25

☐

MICHAEL G. "MIKE" STRAIN

Republican

26

☐

COMMISSIONER OF INSURANCE

Vote for one.

"JIM" DONELON

Republican

27

☐

DONALD HODGE JR.

Democrat

28

☐

CHARLOTTE MCGEHEE

Democrat

29

☐

MATT PARKER

Republican

30

☐

BESE DISTRICT 4

Vote for one.

TONY DAVIS

Republican

38

☐

MARY JOHNSON HARRIS

Republican

39

☐

GLYNIS JOHNSTON

Republican

40

☐

STATE SENATOR 36TH SENATORIAL DISTRICT

Vote for one. All precincts.

HENRY BURNS

Republican

54

☐

RYAN GATTI

Republican

55

☐

TODD HOLLENSHEAD

Democrat

56

☐

POLICE JUROR - DISTRICT 4

Vote for one.

"BRUCE" COMPTON

Republican

65

☐

RANDY THOMAS

Republican

66

☐

POLICE JUROR - DISTRICT 5

Vote for one.

BERNARD HUDSON

Democrat

67

☐

PERRY KIRKLAND

Republican

68

☐

POLICE JUROR - DISTRICT 6

Vote for one.

"JIM" BONSALL

Democrat

69

☐

RONALD DOUGLAS SALE

Other

70

☐

POLICE JUROR - DISTRICT 8

Vote for one.

NICHOLAS "NICK" COX

No Party

71

☐

HARPER EDWARDS

Republican

72

☐

POLICE JUROR - DISTRICT 9

Vote for one.

BEVERLY "DEBBIE" KENNON

Democrat

73

☐

JERRI M. LEE

Democrat

74

☐

POLICE JUROR - DISTRICT 12

Vote for one.

GEORGE FULLER

Democrat

75

☐

BRYAN LANGFORD

No Party

76

☐

DUSTIN MOSELEY

Other

77

☐

REBECCA SHELLEY SHERRARD

Republican

78

☐

VOTER INFORMATION
ONLINE AT
GEAUXVOTE.COM

POLLS OPEN SATURDAY,
OCT. 24 AT 7 A.M. AND
CLOSE AT 8 P.M.

CRIME TRACKER

Webster arrests for the week of Oct. 15

MINDEN POLICE DEPARTMENT

Raymond Iverson, 32, 600 block of Durwood in Minden. Charged with aggravated assault with a firearm.

Kelvin Gipson, 34, 600 block of Sibley Road in Minden. Charged with aggravated assault, simple battery, and is a fugitive from Caddo Parish Sheriff's Office.

Kevin Stewart, 27, 100 block of Fuller Street in Minden. Charged with criminal trespassing.

Davonte Hunt, 22, 100 block of Loop Road in Minden. Charged with second offense domestic abuse battery with child endangerment.

Jimmy L. Taylor, Jr., 25, of Homer. Charged with criminal damage to property, possession of

Schedule I CDS, and resisting an officer.

Teadrien Burris, 17, 800 block of Peach Street in Minden. Charged with simple criminal damage to property.

Caleb Walker, 19, 100 block of Frazier Street. Charged with modified exhaust.

Suzette Galbreath, 46, 11000 block of Clay Ansley Highway in Ruston. Charged with driving under suspension.

SPRINGHILL POLICE DEPARTMENT

Ryan Hoffman, 25, 300 block of Walnut Road in Springhill. Charged with attempted simple escape and simple criminal damage to property.

Ashley Bittle, 30, 600 block of

Douglas Street in Springhill. Charged with aggravated second degree battery.

Jeffery Sumlin, 1700 block of Walnut Road in Cullen. Charged with domestic abuse battery.

Jamarcus Bonapart, 20, 1000 block of Henrietta White in Cullen. Charged with domestic abuse battery.

Donna Mosley, 57, 200 block of 7th Street SW in Springhill. Charged with distribution of amphetamine.

Andy Graves, 29, 200 block of 7th Street SW in Springhill. Charged with distribution of amphetamine.

Brandy Ward, 31, 400 block of Country Place in Shongaloo. Fugitive from Hempstead County.

Reginald Hudson, 52, 200 block

of Edgar Street in Springhill. Charged with theft of purse.

Raquontae Johnson, 17, 700 block of Rosebud Loop. Charged with simple criminal damage to property.

WEBSTER PARISH SHERIFF'S OFFICE

Tom Womack, 33, 100 block of Womack Road in Heflin. Charged with telephone harassment.

Anthony Malone, 38, 200 block of Maple Street in Minden. Charged with violation of probation.

Paul Stevens, 50, 2000 block of South Lakeshore in Shreveport. Fugitive from Marion County in Texas.

David Horn, 33, 12000 block of LA Highway 159 in Shongaloo.

Charged with failure to pay fines.

Kyle Hearnberger, 30, 100 block of Sleepy Hollow in Sarepta. Charged with criminal neglect of family.

Leotha Jackson, 51, 1200 block of Diamond T in Heflin. Charged with contempt of court and violation of probation.

Ashley Hall, 30, 400 block of North Park Drive in Springhill. Charged with contempt of court.

April Germany, 29, 100 block of Oscar Moore in Dubberly. Charged with no seat belt, operating a vehicle with suspended license, require head lamp, aggravated assault, and violation of probation.

Anthony McLaughlin, 56, 200 block of Roy Street in Minden. Charged with distribution of Schedule II CDS.

COURT WATCH

Court News for Oct. 19

Tadazion Jackson: Pled guilty to possession of firearm or carrying concealed weapon by a convicted felon and possession with intent to distribute a Schedule I CDS. Sentenced to 10 years of hard labor at the Louisiana Department of Corrections, credit for time served for possession of a firearm by a convicted felon charge. Sentenced to five years of hard labor at the Louisiana Department of Corrections, credit for time served for possession with intent to distribute a Schedule I CDS charge. Sentences to run concurrent.

Dattrail Washington: Pled guilty to unauthorized entry of an inhabited dwelling. Sentenced to two years of hard labor at the Louisiana Department of Corrections, credit for time served, to run concurrent with any he may have to serve.

Quatarus T. Solomon: Charged with possession with intent to distribute a Schedule I CDS. Pled guilty Oct. 12.

Shannon D. Strother: Charged with racketeering.

Jury trial set for Nov. 30.

Trial set for March 7, 2016.

Dylan Turk: Pled guilty to accessory after the fact to second degree murder. Turk will be sentenced Feb. 1, 2016.

James Walker: Pled guilty to driving while intoxicated (third offense). Unlawful refusal to submit to chemical tests (second offense), careless operation of a motor vehicle, speeding, possession of alcoholic beverages in motor vehicles, and littering charges dismissed. Sentencing set for Feb. 1, 2016.

Carttavius Qualls: Charged with molestation of a juvenile. Trial passed to Jan. 25, 2016.

David Prentice Montgomery: Pled guilty to distribution of a Schedule II CDS. Sentenced to eight years of hard labor at the Louisiana Department of Corrections, credit for time served for this charge only.

Terrel James Smith: Pled guilty to amended charge of simple burglary of an inhabited dwelling and simple burglary of a religious building. Trial remanded for Feb. 22,

2016.

Evangelina C. Green: Charged with two counts of distribution of a Schedule II CDS. Status conference set for Dec. 12.

Mason Dane Barry: Pled guilty to amended charge of attempted simple escape. Charged with two and a half years of hard labor at the Louisiana Department of Corrections, suspended, 18 months of active supervised probation, must pay \$800 fee within six months and \$1,500 plus court costs within one year.

Justin Cassidy Miller: Pled guilty to two counts of misdemeanor domestic abuse battery. Sentenced to six months in the Webster Parish Jail (credit for time served) for each count, for a total of one year. Sentences to run concurrent.

Steven Humphreys: Pled guilty to amended charge of misdemeanor theft. Sentenced to six months in the Webster Parish Jail, concurrent, credit for time served.

James C. Bennett: Charged with simple burglary. Status conference set for Nov. 9.

AROUND THE STATE

USDA expands drought aid in Louisiana

NEW ORLEANS — About 70 percent of Mississippi counties and Louisiana parishes — 57 of 82 counties and 45 of 64 parishes — are now eligible for drought disaster aid, the U.S. Department of Agriculture said Thursday.

The department added 10 Mississippi counties to the list of primary drought disaster areas, bringing the total to 30. Another 25 are eligible because they're next to one of those, and a 26th because it is next to a drought disaster parish in Louisiana, according to news releases.

Louisiana's list now comprises 26 parishes that are primary drought disaster areas and 19 eligible as adjacent to a primary disaster area.

Eight of the Mississippi counties named Thursday as primary disaster areas already had been listed as contiguous counties. Holmes and Leflore were not previously eligible. Another seven — Hinds, Humphreys, Madison, Rankin, Sharkey, Tallahatchie and Yazoo — are new

to the contiguous list.

Winn Parish was added to Louisiana's primary list, and Bienville and Jackson to contiguous parishes.

Parishes and counties now eligible for aid:

Louisiana primary: Allen, Avoyelles, Beauregard, Catahoula, Concordia, East Baton Rouge, East Carroll, East Feliciana, Evangeline, Franklin, Grant, LaSalle, Livingston, Madison, Pointe Coupee, Rapides, Sabine, St. Helena, St. Landry, Tangipahoa, Tensas, Vernon, Washington, West Carroll, West Feliciana, Winn.

Louisiana contiguous: Acadia, Ascension, Bienville, Calcasieu, Caldwell, De Soto, Iberville, Jackson, Jefferson Davis, Lafayette, Morehouse, Natchitoches, Richland, St. John the Baptist, St. Martin, St. Tammany, West Baton Rouge, Winn.

Mississippi primary: Adams, Amite, Attala, Bolivar, Carroll, Choctaw, Claiborne, Clarke, Copiah, Covington, Holmes, Jasper, Jefferson, Jefferson Davis, Jones, Lamar, Lawrence,

Leflore, Lincoln, Marion, Montgomery, Neshoba, Newton, Pearl River, Pike, Sunflower, Walthall, Washington, Wilkinson, Winston.

Mississippi contiguous: Coahoma, Forrest, Franklin, Grenada, Hancock, Harrison, Hinds, Humphreys, Issaquena, Kemper, Lauderdale, Leake, Madison, Noxubee, Oktibbeha, Perry, Rankin, Scott, Sharkey, Simpson, Smith, Stone, Tallahatchie, Wayne, Webster, Yazoo.

Warren County is eligible because it's next to a primary disaster area in Louisiana.

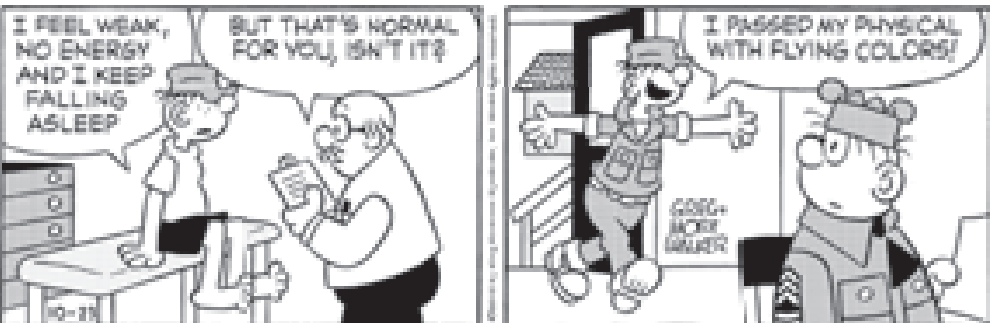
Farmers in those areas have eight months to apply for low-interest emergency loans from the Farm Service Agency.

The agency also has other programs to help farmers and ranchers. It said those include the Livestock Forage Disaster Program, the Livestock Indemnity Program, the Emergency Assistance for Livestock, Honeybees, and Farm-Raised Fish Program, and the Tree Assistance Program.

BABY BLUES | RICK KIRKMAN AND JERRY SCOTT



BEEBLE BAILEY | MORT & GREG WALKER



BLONDIE | DEAN YOUNG AND JOHN MARSHALL



FUNKY WINKERBEAN | TOM BATIUK



HAGAR THE HORRIBLE | CHRIS BROWNE



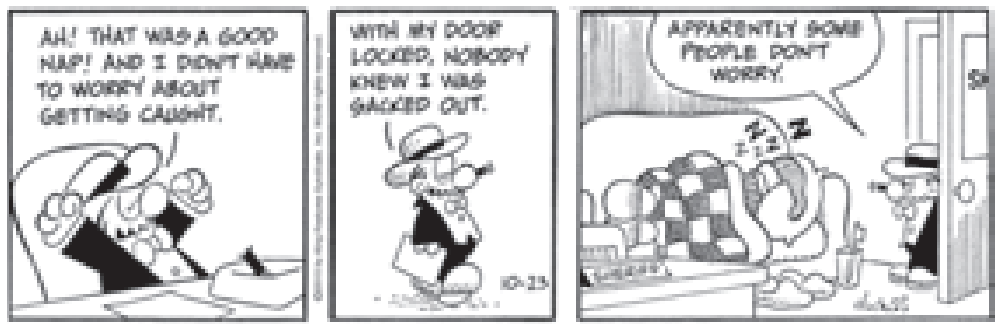
HI AND LOIS | BRIAN WALKER, GREG WALKER AND CHANCE BROWNE



MOTHER GOOSE & GRIMM | MIKE PETERS



SAM AND SILO | JERRY DUMAS



NORTHWEST LOUISIANA CLASSIFIEDS

The Marketplace of Webster and Bossier Parishes.



MINDEN PRESS-HERALD | 203 Gleason Street • Minden, La. 71055 | 318-377-1866 | www.press-herald.com



Grow Your Business
Call Courtney to place your ad!

377-1866
PLACE YOUR
AD TODAY!

Classified line ads are published Monday through Friday in the Minden Press-Herald, Bossier Press-Tribune and online at



Rates

Pricing is easy!

\$7.75

Per Day - Up to 20 words! Additional words are only 30¢ cents more!

Garage Sales
No word limit.

\$11

One Day

\$16.⁵⁰

Two Days

Receive a **FREE Garage Sale Kit** with your two day ad!

*Garage Sale ads must be prepaid.

Deadlines

Ads

Line ads must be submitted by noon the day before publication. Display ads two days prior to publication.

Public Notices

Public notices must be submitted two days prior to publication date depending on the length. Notices may be emailed to classifieds@press-herald.com

Payments

Cash, Checks, Billing



Real Estate Notice

"All real estate advertised herein is subject to the Federal Fair Housing Act, which makes it illegal to advertise any preference, limitation or discrimination based on race, color, religion, sex, handicap, familial status, or national origin, or intention to make any such preference, limitation, or discrimination. We will not knowingly accept any advertising for real estate, which is in violation of the law. All persons are hereby informed that all dwellings advertised are available on an equal opportunity basis."

APARTMENTS FOR RENT

Hillside Apartments
1, 2 & 3 Bedrooms
400 Hillside Lane
Minden, LA 71055
318-377-5550
Lots of Room
Washer & Dryer
connections
Sparkling Pool

Red Oak Villa

1358 Sheppard St.
Minden, LA

Carefree Independent
Living For The Elderly

Low income
subsidized housing.
Free water & garbage.
Mailboxes & laundry
rooms. Emergency call
system. Convenient to
banking & shopping.

377-8474
8:00 - 4:00 - Mon. - Fri.

RENTAL

1259 COUNTRY CLUB CIRCLE
Large completely remodeled, 3br 2ba with out buildings. \$1,200/mo 382-3703

203 MARY DR. 3br 1ba Central A/ H. \$650/ mo \$500/ dep. Call 377-8767

3BR 2 BA MOBILE HOME all electric. Central H/A with carports. \$200/dep. \$600/mo. No Pets!

3BR 2 FULL BATH on 3 acres near Homer. \$450/mo. 433-0071, 584-4373

COUNTRY LIVING 3BD/2BA MH. Central H/A, Appliances all electric. Fenced. NO PETS! \$650/mo. 318-578-8075

SMALL 2BR HOUSE FOR RENT Available Nov 1st. Air and Heat. Stove and Fridge. Furnished \$500/month. Credit app required. Phone-377-5004

MOBILE HOMES

FOR SALE! 14X70 MH \$1,500 as is. Must be moved. 318-268-7937

LAND FOR SALE

TIMBERLAND BID SALE 11-3-2015, 25 acres southeast of Minden, LA, natural pine & hwd forest & residential capabilities, Reynolds Forestry Consulting & Real Estate, Colleen 870-299-0978, reynoldsforestry.com

AUCTIONS

SUNDAY OCT. 25TH 2PM/ ALCO's 7733 Hwy 80E Princeton La. We have Furniture, tools, box lots, rods and reels, shells, several small antiques items, roll around tool box, we have the building full. Auctioneer Al Cox La#626 Snack Bar Open - Call 318-949-3044

TUESDAY, NOVEMBER 24TH

9am. 1442 Sheppard St. Minden La. Absolute Surplus Auction. Webster Parish School Board, Sheriffs Department, Police Jury, and Bossier Webster DA's Office. 13 school buses, 4 - 16X32 metal temporary classroom buildings, trucks, cars, and other seized vehicles, Kyle Towns, Auctioneer, La License 1605-2015 and Jim Towns Auctioneer. LA License 526-2015 318-422-5700. www.facebook.com/circlertrailers

MISC.

DENIED SOCIAL SECURITY DISABILITY and/ or SSI? Please CALL 318-272-3312 ALWAYS leave a message. NO money up front!

SERVICES

APOLLO SPRAY ON KEVLAR BEDLINERS now available at Lewis Tire & Truck Repair. Call Howard 318-377-0359. Finest bedliner available anywhere for your pick-up truck.

HUSBAND FOR HIRE Home maintenance jobs. Call Charles Stubbs 426-5425 or 377-8658

RESIDENTIAL MINI TRACK HOE/ESCAVATOR dozer work. top soil fill dirt, pine straw/ mulch available. No job too small. In town/ out of town. Free quote **Lawn Management** 377-8169

EMPLOYMENT

CARING & COMPASSIONATE CNA'S WANTED Apply in person. Cypress Point Nursing Center Bossier City, LA (behind Lowe's on Douglas Dr.) 318-747-2700 Come & make a difference in someone's life

FAMILY PRACTICE CLINIC is now taking applications for an LPN. Please mail resume to Hines Family Practice Clinic at 1114 Homer Road, Minden, LA 71055.

NOW HIRING qualified servers, hostesses and food runners/ bussers. Email contact information and previous work experience to admin@myromas.com.

STAT HOME HEALTH- Sibley is looking for a Full Time PTA. M-F, 8a-5p. Must have at least 1 yr PTA experience. Competitive pay and benefits. Please come by 252 N Main Street, Sibley to fill out application, email resume to mturley@stathomehealth.net, or fax to 318-371-3675

FOR SALE

8 DRAWER DRESSER WITH MIRROR \$30.00. Gun cabinet (10 guns) \$30.00. Microwave/ TV Cart \$15.00. Brown couch and chair \$50.00. 318-617-5088

Pilates power gym pro w/ 3 dvds, used only 3 times. Paid 300.00 will sell for 200.00 371-0652
Pilates power gym pro w/ 3 dvds, used only 3 times. Paid 300.00 will sell for 200.00 371-0652

GARAGE SALES

BACK ON THE RACK CHILDRENS consignment sale. Friday 10/23 12p-6p and Saturday 10/24 10am-3pm. 1st Presbyterian Church on Main St. Toys, clothes, costumes, baby items, and lots of name brands.

MOVING SALE

Thursday - Saturday 7:00-Until. 137 Lawson Davis Rd. Off Jack Martin Rd. on left. Just passed Beech Springs Church.

TECHNOLOGY COORDINATOR in the Department of Health Information Management Louisiana Tech University seeks a technology coordinator whose role will focus on the area of Health Information Management. This is an unclassified 12 month position, available within the College of Applied and Natural Sciences, Department of Health Information Management. Responsibilities: Successful applicants should be familiar with content delivery systems (i.e. Tegrity, Blackboard), online learning and testing systems, web page development and maintenance, Windows XP and the Windows Server Family. Health Information Systems knowledge is a plus. Applicants should be self-motivated, independent thinkers with good oral and written communication skills, and have the ability to write policies, procedures and guidelines for electronic course delivery and systems use. Applicants must have experience with information technology. A Bachelor's degree in a related field is preferred. Application Procedure: To assure consideration, send cover letter of interest describing qualifications, resume, evidence of professional credentials (if applicable), and the names, addresses, and telephone numbers of three Professional references to: Angela Kennedy Louisiana Tech University Department of Health Information Management PO Box 3171 Ruston, LA 71271 USA or e-mail your application material to angelak@latech.edu. Review of applications will begin immediately and will continue until the position is filled. Louisiana Tech University is an EEO/AA employer. Women and minorities are encouraged to apply.



SHERIFF S SALE

MIDFIRST BANK VS.

GARY GRIFFIN AND SHANA GRIFFIN

In the Twenty-Sixth Judicial District Court of Webster Parish, Louisiana, No. 74422.

By virtue of a WRIT OF SEIZURE AND SALE issued out of the Twenty-Sixth Judicial District Court of Webster Parish, Louisiana, in the above styled and numbered suit and to me directed, I have seized and taken into my possession and will offer for sale at public auction to the last and highest bidder for cash WITH the benefit of appraisal and according to law at the principal front door of the Courthouse in the City of Minden, Webster Parish, Louisiana, on

WEDNESDAY, October 28, 2015, during the legal sale hours, the following property, to wit:

A certain tract or parcel of land situated in the Northeast 1/4 of the Northwest 1/4 of Section 25,

Township 21 North, Range 9 West, Northwestern Land District, Webster Parish, Louisiana, and being more particularly described as follows:

Commence at a railroad spike found marking the Northeast corner of the Northeast 1/4 of the Northwest 1/4 of Section 25, Township 21 North, Range 9 West, Northwestern Land District, Webster Parish, Louisiana; proceed South 00 degrees 22 minutes 01 seconds West along the East line of said Northeast 1/4 of the Northwest 1/4, a distance of 658.08 feet to the Northeast Corner of the North 1/2 of the Southeast 1/4 of the Northeast 1/4 of the Northwest 1/4; thence proceed South 89 degrees 47 minutes 22 seconds West along the North line of said North 1/2 of the Southeast 1/4 of the Northeast 1/4 of the Northwest 1/4, a distance of 588.98 feet; thence proceed South 00 degrees 35 minutes 55 seconds West, a distance of 260.88 feet to a set 5/8 rebar and to the Point of Beginning; thence continue South 00 degrees 35 minutes 55 seconds West, a distance of 260.88 feet to a set 5/8 rebar; thence proceed North 89 degrees 24 minutes 05 seconds West, a distance of 194.29 feet to a 5/8 rebar set on the Easterly right-of-way line of Shiloh Cemetery Road; thence proceed North 13 degrees 31 minutes 34 seconds West along the easterly right-of-way line on Shiloh Cemetery Road, a distance of 2.60 feet to a set 5/8 rebar; thence proceed North 09 degrees 03 minutes 28 seconds West along the Easterly right-of-way line of Shiloh Cemetery Road, a distance of 63.23 feet to a set 5/8 rebar; thence proceed North 05 degrees 49 minutes 23 seconds West along the Easterly right-of-way line of Shiloh Cemetery Road, a distance of 71.65 feet to a set 5/8 rebar; thence proceed North 01 degrees 18 minutes 26 seconds East along the Easterly right-of-way line of Shiloh Cemetery Road, a distance of 124.83 feet to a found 3 iron pipe; thence proceed South 89 degrees 24 minutes 05 seconds East, a distance of 212.00 feet to the Point of Beginning, containing 1.25 acres, more or less, and being subject to all rights-of-way, easements and servitudes of record and/or of use.

In the Twenty-Sixth Judicial District Court of Webster Parish, Louisiana, No. 73868.

By virtue of a WRIT OF SEIZURE AND SALE issued out of the Twenty-Sixth Judicial District Court of Webster Parish, Louisiana, in the above styled and numbered suit and to me directed, I have seized and taken into my possession and will offer for sale at public auction to the last and highest bidder for cash WITH the benefit of appraisal and according to law at the principal front door of the Courthouse in the City of Minden, Webster Parish, Louisiana, on

WEDNESDAY, October 28, 2015, during the legal sale hours, the following property, to wit:

SOLD SUBJECT TO ANY SUPERIOR LIENS, MORTGAGES OR PRIVILEGES THERETO.

Said property seized is that of the defendant and will be sold to satisfy a judgment rendered in our Honorable Court.

GARY S. SEXTON Sheriff and Ex-Officio Auctioneer, Webster Parish, Louisiana

Linda Vaughan-Deputy

September 25, 2015
October 23, 2015
Minden Press-Herald

SHERIFF S SALE

BANK OF AMERICA, N.A.

VS.

TAWNIA R. SMITH A/K/A TAWNIA SMITH LAYFIELD

In the Twenty-Sixth Judicial District Court of Webster Parish, Louisiana, No. 74588.

By virtue of a WRIT OF SEIZURE AND SALE issued out of the Twenty-Sixth Judicial District Court of Webster Parish, Louisiana, in the

Linda Vaughan-

Deputy

September 25, 2015
October 23, 2015
Minden Press-Herald

SHERIFF S SALE

U.S. BANK NATIONAL ASSOCIATION, AS TRUSTEE FOR TERWIN MORTGAGE TRUST 2005-16HE, ASSET-BACKED CERTIFICATES, SERIES 2005-16HE

VS.

JERRY W. SHPHERD AND ANNETTA SHEPHERD

In the Twenty-Sixth Judicial District Court of Webster Parish, Louisiana, No. 73868.

By virtue of a WRIT OF SEIZURE AND SALE issued out of the Twenty-Sixth Judicial District Court of Webster Parish, Louisiana, in the above styled and numbered suit and to me directed, I have seized and taken into my possession and will offer for sale at public auction to the last and highest bidder for cash WITH the benefit of appraisal and according to law at the principal front door of the Courthouse in the City of Minden, Webster Parish, Louisiana, on

WEDNESDAY, October 28, 2015, during the legal sale hours, the following property, to wit:

SOLD SUBJECT TO ANY SUPERIOR LIENS, MORTGAGES OR PRIVILEGES THERETO.

Said property seized is that of the defendant and will be sold to satisfy a judgment rendered in our Honorable Court.

GARY S. SEXTON Sheriff and Ex-Officio Auctioneer, Webster Parish, Louisiana

Linda Vaughan-Deputy

September 25, 2015
October 23, 2015
Minden Press-Herald

SHERIFF S SALE

BANK OF AMERICA, N.A.

VS.

TAWNIA R. SMITH A/K/A TAWNIA SMITH LAYFIELD

In the Twenty-Sixth Judicial District Court of Webster Parish, Louisiana, No. 74588.

By virtue of a WRIT OF SEIZURE AND SALE issued out of the Twenty-Sixth Judicial District Court of Webster Parish, Louisiana, in the

above styled and numbered suit and to me directed, I have seized and taken into my possession and will offer for sale at public auction to the last and highest bidder for cash WITHOUT the benefit of appraisal and according to law at the principal front door of the Courthouse in the City of Minden, Webster Parish, Louisiana, on

WEDNESDAY, October 28, 2015, during the legal sale hours, the following property, to wit:

Begin at the Northwest corner (NW/cor) of Section 21, Township 18 North, Range 9 West, Webster Parish, Louisiana and thence run South 0 degrees 08 00 East 815.62 feet; thence run North 81 degrees 27 00 1,737.05 feet to the Point of Beginning of the property herein described; thence continue North 81 degrees 27 00 East 100 feet; thence run North 8 degrees 33 00 West 138 feet; thence run South 81 degrees 27 00 West 100 feet; thence run South 8 degrees 33 00 East 138 feet to the Point of Beginning, together with all improvements thereon and all rights thereto belonging as shown on plat of survey prepared by Doyle P. Sanders, registered land surveyor, dated December 7, 1967 attached to register number 210,566.

By fee simple deed from Billie O. Ponder, husband and wife and Billy T. Ponder as set forth in Book 1072 Page 52 dated 08/11/2008 and recorded 08/14/2008, Webster Parish Records, State of Louisiana.F

SOLD SUBJECT TO ANY SUPERIOR LIENS, MORTGAGES OR PRIVILEGES THERETO.

Said property seized is that of the defendant and will be sold to satisfy a judgment rendered in our Honorable Court.

GARY S. SEXTON Sheriff and Ex-Officio Auctioneer, Webster Parish, Louisiana

Linda Vaughan-Deputy

September 25, 2015
October 23, 2015
Minden Press-Herald

SHERIFF S SALE

THE BANK OF NEW YORK MELLON TRUST COMPANY, NATIONAL ASSOCIATION FKA THE BANK OF NEW YORK TRUST COMPANY, N.A. AS SUCCESSOR TO JP MORGAN CHASE BANK N.A. AS TRUSTEE FOR RASC 2004-KS2

In the Twenty-Sixth Judicial District Court of Webster Parish, Louisiana, No. 74588.

By virtue of a WRIT OF SEIZURE AND SALE issued out of the Twenty-Sixth Judicial District Court of Webster Parish, Louisiana, in the

VS.

LAQUINITA SMITH A/K/A LAQUINITA ROCHELLE SMITH

In the Twenty-Sixth Judicial District Court of Webster Parish, Louisiana, No. CV72450.

By virtue of a WRIT OF SEIZURE AND SALE issued out of the Twenty-Sixth Judicial District Court of Webster Parish, Louisiana, in the above styled and numbered suit and to me directed, I have seized and taken into my possession and will offer for sale at public auction to the last and highest bidder for cash WITH the benefit of appraisal and according to law at the principal front door of the Courthouse in the City of Minden, Webster Parish, Louisiana, on

WEDNESDAY, November 25, 2015, during the legal sale hours, the following property, to wit:

LOT SEVENTEEN (17), L.T. BROWN SUBDIVISION, located in the W 1/2 of SE 1/4, Section 28, Township 19 North, Range 9 West, Minden, Webster Parish, Louisiana, as per Map and Plat thereof on file in the Office of the Clerk of Court, Webster Parish, Louisiana, in Map Book 3, Page 71, LESS, a part thereof described as beginning at the Northwest corner of Lot Seventeen (17) and run Northeast along curve of road 5.21 feet; thence run South 4 degrees 46 East 185 feet to the rear lot line; thence run Southwest along rear lot line 9 feet to the Southwest corner of Lot Seventeen (17); thence run Northwest along lot line 186 feet to the POINT OF BEGINNING. ALSO a part of Lot Sixteen (16), and run Northeast along curve of road 20.11 feet; thence run South 22 degrees 00 East 142 feet to rear lot line; thence run Southwest along rear line 31 feet to Southwest corner of Lot Sixteen (16); thence run Northwest along lot line 149.85 feet to the POINT OF BEGINNING, together with all improvements located thereon and all rights thereto belonging, subject to restrictions, servitudes, rights-of-way and outstanding mineral rights of record affecting the property.

SOLD SUBJECT TO ANY SUPERIOR LIENS, MORTGAGES OR PRIVILEGES THERETO.

Said property seized is that of the defendant and will be sold to satisfy a judgment rendered in our Honorable Court.

GARY S. SEXTON Sheriff and Ex-Officio Auctioneer, Webster Parish, Louisiana

Linda Vaughan-Deputy

October 23, 2015
November 20, 2015
Minden Press-Herald

SHERIFF S SALE

FEDERAL NATIONAL MORTGAGE ASSOCIATION

VS.

JAMES R LINDSEY, JR

CLASSIFIEDS

facebook.com/mindenph

In the Twenty-Sixth Judicial District Court of Webster Parish, Louisiana, No. 74851.

By virtue of a WRIT OF SEIZURE AND SALE issued out of the Twenty-Sixth Judicial District Court of Webster Parish, Louisiana, in the above styled and numbered suit and to me directed, I have seized and taken into my possession and will offer for sale at public auction to the last and highest bidder for cash WITH the benefit of appraisalment and according to law at the principal front door of the Courthouse in the City of Minden, Webster Parish, Louisiana, on WEDNESDAY, November 25, 2015, during the legal sale hours, the following property, to wit:

Begin at the Northwest Corner of the Southeast Quarter of Northeast Quarter (NW/C of SE/4 of NE/4), Section 12, Township 23 North, Range 11 West, Webster Parish, Louisiana, thence run East 155 feet; thence run South 432.5 feet to the point of beginning; thence continue South 120 feet; thence run West 155 feet; thence run North 120 feet;

thence run East 155 feet to the point of beginning, together with all improvements thereon and all right thereto belonging; subject to restrictions, servitudes, rights-of-way and outstanding mineral rights of record affecting the property.

SOLD SUBJECT TO ANY SUPERIOR LIENS, MORTGAGES OR PRIVILEGES THERETO.
S a i d property seized is that of the defendant and will be sold to satisfy a judgment rendered in our Honorable Court.

GARY S. SEXTON Sheriff and Ex-Officio Auctioneer, Webster Parish, Louisiana

Linda Vaughan-Deputy

**October 23, 2015
November 20, 2015
Minden Press-Herald**

SHERIFF S SALE

U.S. BANK TRUST, N.A., AS TRUSTEE FOR LSF9 MASTER PARTICIPATION TRUST, BY CALIBER HOME LOANS, INC., AS ITS ATTORNEY IN FACT

VS.

HELEN MARIE BURTZEL BROWN

AND ANTHONY NELSON BROWN

In the Twenty-Sixth Judicial District Court of Webster Parish, Louisiana, No. 74772.

By virtue of a WRIT OF SEIZURE AND SALE issued out of the Twenty-Sixth Judicial District Court of Webster Parish, Louisiana, in the above styled and numbered suit and to me directed, I have seized and taken into my possession and will offer for sale at public auction to the last and highest bidder for cash WITH the benefit of appraisalment and according to law at the principal front door of the Courthouse in the City of Minden, Webster Parish, Louisiana, on WEDNESDAY, November 25, 2015, during the legal sale hours, the following property, to wit:

Lot Number Five (5) of Cedar Crest Subdivision, situated in Section 22, Township19 North, Range 9 West, Minden, Webster Parish, Louisiana, as per map and plat showing revision of certain lots thereof, on file and of record in Map Book 2, Page 72A, of the official records of

said parish in the Office of the Clerk of Court, together with all improvements thereon and all rights thereto belonging; subject to restrictions, servitudes, rights-of-way and outstanding mineral rights of record affecting the property.

Being the same property conveyed to Anthony Nelson Brown and Helen Marie Burtzel Broowwn, husband and wife by deed from Vance Hayse Heaberlin and Alice Life Heaberlin, husband and wife recorded 01/03/1997 in Deed Document 407790, in the Clerk s Office of Webster Parish, Louisiana.

SOLD SUBJECT TO ANY SUPERIOR LIENS, MORTGAGES OR PRIVILEGES THERETO.
S a i d property seized is that of the defendant and will be sold to satisfy a judgment rendered in our Honorable Court.

GARY S. SEXTON Sheriff and Ex-Officio Auctioneer, Webster Parish, Louisiana
Linda Vaughan-Deputy

**October 23, 2015
November 20, 2015
Minden Press-Herald**

SHERIFF S SALE

CARRINGTON MORTGAGE SERVICES LLC

VS.

CHARLES R. BOYKIN, III A/K/A CHARLES BOYKIN, III AND JODI MORGAN BOYKIN A/K/A JODI M. BOYKIN A/K/A JODI BOYKIN

In the Twenty-Sixth Judicial District Court of Webster Parish, Louisiana, No. 74556.

By virtue of a WRIT OF SEIZURE AND SALE issued out of the Twenty-Sixth Judicial District Court of Webster Parish, Louisiana, in the above styled and numbered suit and to me directed, I have seized and taken into my possession and will offer for sale at public auction to the last and highest bidder for cash WITH the benefit of appraisalment and according to law at the principal front door of the Courthouse in the City of Minden, Webster Parish, Louisiana, on WEDNESDAY, November 25, 2015, during the legal sale hours, the following property, to wit:

A 0.24 acre, more

or less, tract of land located in the Northeast Quarter of the Southeast Quarter (NE/4 of SE/4), Section 13, Township 22 North, Range 11 West, Sarepta, Webster Parish, Louisiana, being a portion of Lot NO. 5, J.W. NEWMAN S SUBDIVISION, as per map and plat thereof on file and of record int he Webster Parish, Clerk of Court's Office in Map Book 2, Page 3, more particularly described as follows:

Begin at the Southwest Corner of Lot No. 4, J.W. NEWMAN S S U B D I V I S I O N and run South 14 degrees 01 minutes 35 seconds East 13 feet (call South 15 degrees 00 minutes East) to an existing iron pin; thence run South 15 degrees 02 minutes 51 seconds East 100 feet (call South 15 degrees 00 minutes East) to an existing iron rod; thence run North 74 degrees 54 minutes 10 seconds East 150 feet (call North 75 degrees 00 seconds East) to an existing iron rod; thence run South 15 degrees 01 minutes 55 seconds East 45 feet (call South 15 degrees 00 minutes East) to a set 5/8 iron rod for the POINT OF

BEGINNING; thence run North 74 degrees 58 minutes 51 seconds East 120.10 feet to a set 5/8 iron rod on the apparent West right-of-way of Slack Street; thence run South 15 degrees 01 minutes 55 second East 88 feet along said right-of-way to a set 5/8 iron rod; thence run South 74 degrees 58 minutes 51 seconds West 120.10 feet to a set 5/8 iron rod; thence run North 15 degrees 01 minutes 55 seconds West 88 feet (call North 15 degrees 00 minutes West) to the POINT OF BEGINNING.

SOLD SUBJECT TO ANY SUPERIOR LIENS, MORTGAGES OR PRIVILEGES THERETO.
S a i d property seized is that of the defendant and will be sold to satisfy a judgment rendered in our Honorable Court.

GARY S. SEXTON Sheriff and Ex-Officio Auctioneer, Webster Parish, Louisiana

Linda Vaughan-Deputy

**October 23, 2015
November 20, 2015
Minden Press-Herald**

North Parke Apartments

100 North Parke Drive
Dayline

NOW LEASING

318-745-2686

**Carpet
Mini-Blinds
On-Site Laundry
One & Two & Three Bedrooms**

**Eldery, Handicapped & Disabled Welcome
Income Limits Apply
Section 8 Vouchers/Certificates Accepted**

T.D.D. 1-800-546-8277

* This institution is an equal opportunity provider and employer.
Rural Development Properties; In accordance with Federal law and U.S. Department of Agriculture policy, this institution is prohibited from discriminating on the basis of race, color, national origin, sex, age, or disability (not all prohibited basis apply to all programs). To file a complaint of discrimination, write USDA Assistant Secretary for Civil Rights, Office of the Assistant Secretary for Civil Rights, 1400 Independence Ave., S.W. Stop 9410, Washington, DC 20250-9410 or call (866) 532-9992 (English) or (800) 877-8339 (TDD) or (866) 377-6642 (English Federal relay) or (800) 845-8138 (Spanish Federal relay). USDA is an equal opportunity provider and employer.



Professionally Managed by
 Tra-Dor Management, Inc.
 712 Milam Street, St. 201
 Shreveport, LA 71101 • 318-221-1760



CRYPTOQUIP

CROSSWORD

IT PAYS

A man wakes up after sleeping under an **ADVERTISED** blanket on an **ADVERTISED** mattress, shaves with an **ADVERTISED** razor, brushes his teeth with **ADVERTISED** toothpaste, washes with **ADVERTISED** soap, puts on **ADVERTISED** clothes, drinks a cup of **ADVERTISED** coffee, drives to work in an **ADVERTISED** car and then refuses to **ADVERTISE** believing it doesn't **PAY**.

Later, when his business is failing he **ADVERTISES** it for sale in the...

MINDEN PRESS-HERALD
CLASSIFIEDS

Let your customers know what you have.

Call and **ADVERTISE** today! 377-1866

CLASSIFIEDS

www.press-herald.com



CAREY REAL ESTATE

"It's good to be home!"




108 Woodhaven - You need to see this home to appreciate the huge rooms and great layout. It has been totally updated with gorgeous hardwood flooring, new paint, and plush new carpet upstairs. There's plenty of space for everyone with 5BR, plus office and bonus rm, huge LR, separate dining rm, large kitchen, and 4 full baths! \$429,500

619 ELM - Beautiful 4BR, 2BA home in Minden's Historic District! Loaded with gorgeous woodwork, leaded glass windows, and lots of charm, this 3100 sf home sits on a large lot with lovely shade trees. ~~\$227,500!~~ **REDUCED! \$217,500**

FOR COMPLETE LIST OF PROPERTIES WITH DETAILS AND PICTURES, GO TO WWW.CAREYREALESTATE.COM OR COME SEE US AT 415 HOMER ROAD.

415 Homer Road • Minden, LA • 377-5115 • Fax: 377-2642

RESIDENTIAL

209 KITCHENS - Situated on pretty child friendly cull-d-sac lot with 4/2.5 - \$299,999 **REDUCED! \$285,000**

900 DREW LANE - Back on the market with a brand new driveway!! Make moving in a breeze! With 4 large bedrooms, 4 full baths, two living areas plus a large playroom and an extra large lot, this lovely traditional home with curb appeal aplenty is ready for you and all your kin folks to celebrate the holidays. \$225,000

6421 HWY 527 - Lovely 3/2.5 on 12 acres with new deck, outdoor kitchen, playhouse - \$345,000

807 NORTON - Charming 2 bedroom or possibly 3...there is a sunroom! Fenced backyard situated on quiet street, convenient to everything in the neighborhood. Investors???

104 LAUREL CR. - Southern comfort and elegance can be found in this 3BR/2BA plus study with large front and back porches ~~\$295,000~~ **REDUCED! \$275,000**

225 BRUNSON ROAD/HEFLIN - Beautiful 8yr old custom home with gorgeous open floorplan, stone fireplace, wonderful kitchen, sprawling porch overlooking wooded acreage. 4BR/4BA plus office, approximately 5 acres (with 5 more acres possibly available), nice storage building, beautiful setting. ~~\$379,000~~ **REDUCED!!! \$299,000**

571 CENTRAL SCHOOL ROAD/ DUBBERLY - Spacious 3BR, 2BA home with 10' ceilings, huge screened in back porch, large kitchen and open floorplan, situated on a lovely 1.5 acre lot!! \$167,000

217 KITCHENS CT. - Beautiful custom 4BR, 3.5Ba with office, gameroom, incredible kitchen, hearthroom, and plenty of built-ins and storage. Also has lovely pool, patio and landscaping. Priced under appraisal at ~~\$540,000~~ **REDUCED \$525,000**

604 GERMANTOWN RD. 3BR, 1BA on large lot. Only ~~\$80,000~~ **REDUCED \$65,000**

707 BUCHANAN - 1.5 story tastefully remodeled in great neighborhood with lots of charm, 3/1.5 with large deck overlooking big backyard. ~~\$145,000~~ **REDUCED \$140,000**

802 JEFFERSON - Large older beautifully renovated 3/2.5 - ~~\$165,000~~ **REDUCED \$165,000**

403 MARSHALL - Move in ready for a family to enjoy Thanksgiving and Christmas!! Three bedrooms, living room, dining room, and separate den. Has experienced lots of TLC thru the years! \$72,500

109 BARBARA DR - This 3BR/2BA has almost 1400sqfta, central a/h, and nice yard. Priced low at only \$109,000!

NEW LISTING! 210 CRESTVIEW - 3BR/1BA, brick w/ new carpet and fresh pain, extra large fenced backyard. Only \$86,500

323 COLLEGE - Turn of the century 1.5 story with 2784 sq.ft. is statly well maintained home with no loss of integrity situated on a beautiful lot. There are 3 bedrooms with a room-size master closet and 3 baths. Inviting front and back porches add to the charm. \$169,000

LAND & LOTS COMMERCIAL
324'x85' LOT @ MCINTYRE AND MARSHALL - \$15,000
RECREATION DR. - \$26,500

JOYCE CAREY - 469-5136
AMY C. MEALEY - 469-3054 **DARIN A. MEALEY, AGENT** - 469-6603

WWW.CAREYREALESTATE.COM



WILEY REAL ESTATE LLC

"Opening New Doors"

Annette Wiley
Minden, LA

Real Estate Broker

wileyrealestate20@yahoo.com • www.awileyrealestate.com

Office: 377-8652 • Cell: 455-6688

CHARLOTTE HAMM - 422-6471

RONNIE BROUGHTON - 272-2881 • AGENT CARL BROGDON - 518-1666




1166 DORCHEAT RD/MINDEN - 3BR/2BA, M/H, fireplace, large open den & kitchen, approx. 1600 sq.ft., sitting on 2.5 acres, C A/H, 28x60, attached carport, large work shop \$95,000

410 ART CAMP ROAD/HEFLIN - 2BR/2BA, M/H, 08, nice lot, covered carport, storage builds, front covered deck across road from lake bistineau approx. 1300 + sq ft \$85,000

301 EAST UNION -large concrete building on corner lot, 3, 1/2 BA, large parking area, fenced, can be used as a car lot and auto repair shop. New Roof. \$125,000. Owner will consider all offers!

609 LONGLEAF DRIVE- 3BR/2BA, brick, F.P., large lot, new carpet & paint, great neighborhood, covered patio, large den & dining area. \$191,000

300 S. MIDDLE LANDING - 2 large Bedrooms, brick,Central A/H , large bonus room could be bed room on 1/2 acre lot approx. 1400 sq ft heated, corner lot \$79,900

214 MILLER ST. - Commerical Building used as a convention center, 14,221 sqft., lots of parking area, call for more details, owner will consider offers.

1110 RATHBURN - 3/2 Brk. CA/H New Granite countertops/ceramic floors/all appliances. Refinished hardwood floors throughout. Double garage. ~~\$159,999~~ **REDUCED! \$149,000.** Call Charlotte

819 TILLMAN - 3 br, refinished H/W floors, W/D, stove, refrigerator, D/W, D/R, garage, fenced yard, corner lot. Move In Ready! Call Charlotte. \$87,000

137 SHANE DRIVE- 3BR, 2BA, Brick, FP, large open kitchen-den, large fenced yard on 3 lots ~~\$150,000~~ **REDUCED \$148,000**

301 MAIN ST. - large concrete block bldg with approx. 12,000 sq., 8 offices, 2 large accounting offices, parts office, kitchen, 3, 1/2 BA, large shop, showroom, large parking lot, Once used as a Buick dealership. Also, a 93,000 sq ft building, with 4 offices, showroom, shop. Also, two metal buildings; 1500 sq ft.bldg., 2,200 sq ft seven bay garage, on approx. 3 acres. \$1.2 M Call for details

Investment property - 61 McClanchan, Dixie Inn 50x100 lot with 4 rv hook ups that rent for approx \$395 per month for a total income of \$1580 a month--Call for Details!

26 ACRES OF LAND /Angie Road off of Lewisville Road. ~~\$76,000~~ **REDUCED \$69,000** Call Charlotte Hamm

319 BRITT STREET/MINDEN - 2 Lots. \$25,000

14.5 acres of land on Hwy 531/Heflin. \$2,500/acre Owner/Agent

LOT ON HWY 80 - \$12,000

LOT ON LEE STREET - Call for details.

122 WASHINGTON STREET - SOLD

❄ I can show you all the listed properties in the Minden area!

❄ Want to sell your house? List with me, I will make it an easy process.



La. State Realty LLC

Angie Meek 377-8652 Ann Campbell 347-0582

Kenneth Lyle 425-6417 Laura Stanley 425-0203 Susan Preston 347-0888

Jennifer Beale 377-0092 Jennifer Simpson 347-0888 Linda Johnson 347-0888

377-0092 • www.laastaterealty.com

Member of the National L.A. Association of Realtors

HUGE REDUCTION!




332 Woodard Drive - Beautiful 4BR, 2 living areas, gorgeous kitchen, large laundry, private backyard ~~\$249,900~~ **REDUCED \$15,000! \$234,900** - Call Angie.

2200 Peachtree/Dubberly - Under construction, enjoy 2.26 +/- acres, the country and wildlife in your own backyard, 4BR w/ 2376 sq.ft., F/P, tall ceiling, crown molding. Agent related to seller. Call Laura.




1109 GLORIA/MINDEN-Completely remodeled 3BR/3BA, quiet street, darling home with granite countertops. Call Angie. ~~\$187,500~~ **REDUCED \$179,900**

527 Country Club - Priced to sell, 3BR/2BA, 2018 sq.ft. on .92 +/- acre \$159,000. Call Angie

HOMES FOR SALE

211 Fernwood - Your custom dreamhome with land. 6 acres +/-, 2011 brick VN/stucco. 4BR/4BA, 2 story, 3461 sq.ft., (1) woodburn, formal dining, beautiful brick columns, lots of storage \$465,000

216 Woodhaven Dr. - Beautiful, spacious 3br/2ba Brick Stucco home 2710 HTD nicely landscaped wrought iron fence, F/P, huge master closet price to sale \$299,900

3501 Shadow Wood/Haughton - 3BR/2BA, 2068 sq.ft., saltwater pool, fence, F.P. Call Jennifer Swain. \$186,900

1028 Ridgewood -Must see this new home, just completed. Beautiful crown molding through-out, formal dining, large open kitchen w/island, breakfast bar, 2785 sq.ft., game room, & much more!

1101 Sibley Road/Minden - 1.73 +/- acres, gorgeous backyard with pond, manufactured home, needs some TLC. \$70,000

113 Woodhaven - Gorgeous custom built home, wood floors,marble ceramic, open floor plan, den, office room can be used as 4th bedroom. Lots of extras! \$369,900

507 Goode - Great starter home with lots of charm. Fenced backyard, double carport, has shed, 3 bedroom with 1251 sq.ft. Call Susan. \$96,500

3607 Spurgin Rd/Doyline - Darling House in Country, 3 bedrm / 2 ba. completely updated w/granite .mins from Haughton \$165,000

109 S. Tanglewood - Beautiful updated 3BR/2BA, living used as 4 bedroom, gameroom, slab for RV w/ electric hookup, remodeled kitchen. Call Susan **REDUCED \$204,500**

181 Camp Bistno Rd/Doyline - Beautiful home in a quiet country setting. 2.30 acres +/-, 4BR/2BA, 2004 manufactured (2) outside storage. ~~\$147,000~~ **REDUCED \$136,500**

16524 Hwy 79/Minden - One of a Kind 2 story, stone home on 4.67 acres, workshop, completely remodeled, granite countertops, 4BR/3.5BA. ~~\$380,000~~ **REDUCED \$369,900** Call Angie for information.

1208 Constable Street - Lots of house for the money! Huge backyard, 3BR/1.5BA, 2186 sq.ft., fresh paint, move in ready! ~~\$130,000~~ **REDUCED \$115,000**

7554 Hwy 516/Bryceland - 5 Acres +/-, vinyl siding, 2BR/1BA, large living \$89,995

7559 Hwy 516/Bryceland - Country living on 46 +/- acres with pond. House is 1945 sq.ft. 2 carport, central h/c ~~\$249,000~~ **REDUCED \$194,000**

124 Morris Cir/Homer - Really cute 3BR/2BA. Recently remodeled including kitchen w/ granite, new cabinets & stainless appliances, and more. Call Jennifer Simpson \$115,000


LOTS AND LAND FOR SALE

1371 Mims Road - 18.33 +/- acres, PTWD/Mix Brush \$60,000 **Motivated seller!**

COMMERCIAL

11112 Hwy. 371/Sibley - Commerical property, 36x50 pole barn, 70x36 shop, office on 5 acres. Much more, please call for showing. **MOTIVATED SELLERS! FOR SALE! REDUCED! \$229,900**

12091 HWY 80 - Brick vn Commercial Building \$45,000. Call Angie



Got your attention?

Good.

The first rule of advertising is catching their eye.
The second is sustained, repeated advertising.

Advertising doesn't cost, it PAYS!

MINDEN PRESS-HERALD

For more information, call an Advertising Representative today at 377-1866.

SMALL ADS DO SELL!

CALL AND PLACE YOURS TODAY!

377-1866

Having A Garage Sale?

1 Day Ad \$11.00

2 Day Ad \$15.50

Advertise it in the Classifieds!

MINDEN PRESS-HERALD

Recieve a FREE Garage Sale Kit with your 2 day ad!

377-1866





May we have your

ATTENTION

GOT IT? GREAT!

ADVERTISING WORKS

DON'T WAIT!

SPEAK TO AN ADVERTISING REPRESENTATIVE TODAY!

377-1866

BUSINESS & SERVICE DIRECTORY

PROFESSIONAL REFERENCES FOR ALL YOUR NEEDS

ADVERTISE your business!
Call Telma or Curtis
at 377-1866.



T & I ROOFING, LLC

Licensed & Insured

- Leak Repair
- Shingle Roofs
- Metal Roofs
- Flat Roofs
- Construction SVCS
- Senior Citizen Discount

150 Years Combined Roofing Experience

Work Guaranteed in Writing

Ask for Todd • FREE ESTIMATES • 318-458-5544

Pool Problems?

WE NOW OFFER
MONTHLY SERVICE FOR
\$75

**Go Local.
Go Pool Fool.
371-7773**

ACTION REMODELING

- Home Remodeling
- Pressure Washing
- Home Maintenance
- Tile Work
- Interior/Exterior Painting

FREE ESTIMATES!
Family Owned & Operated
Call Joseph at 318-550-1176

HAVE YOU HEARD?

Tru-Tone Hearing Aid Center

has served the NWLA area for over 30 years providing experience, convenience, quality and value, the newest technology, a money back guarantee and easy financing for all your hearing needs!

371-0995
338 Morris Drive • Minden

Herman

Cowart Chair Caning

Home Based • 1014 Providence Road
Bossier • 337-422-4100

Services Include:
Seat Weaving
Cane Webbing
Shaker Tape
Repairs

Visit us on Facebook!

Service Experts

HEATING & AIR CONDITIONING

**AC NOT COOLING?
CALL US TODAY!**

WE DO:
REPAIRS • INSULATION
SCHEDULED MAINTENANCE
NEW INSTALLATIONS
DUCT WORK • SOLAR

318-751-9289
WWW.SERVICEEXPERTS.COM

May Mays Pampered Pets

Grooming, Love and Care for a reasonable price!

Doggy Daycare & Boarding available!

148 Gregory Circle
Minden, LA 71055
318-299-3593

(call for pricing)

Leigh's Maintenance Service

FREE Estimates!
Senior Discounts Available

Home Remodeling
Pressure Washing
Home Maintenance
Interior/Exterior Painting

318-245-0241

LAWN Management

**Call today for a free quote!
318-377-8169**

Weed Eating • Edging • Mowing • Blowing
Pine Straw • Mulch • Top Soil • Garden Soil
Fill Dirt • Other Services

VISA

Shull Tree Service, LLC

Licensed & Insured Arborist
38 Years Experience
Honest, dependable, efficient
FREE ESTIMATES

- Tree Removal
- Tree Trimming
- Chipping & Hauling
- Clean-up
- Stump Grinding
- Firewood

Gerald Shull, Owner • 377-7725 or 470-5570

"Come Ride With Us"

Webster Parish Police Jury
Office of Community Services
PUBLIC TRANSPORTATION

Medical appointments, work, shopping, banking or visiting. From Springhill to Shreveport and all points in between we will get you there with dependable, courteous services.

For information or to schedule a ride
318-377-7022 - Minden
318-534-5696 - Springhill

Handicap & wheelchair accessible
Equal opportunity employees/services

Monthly Bus Passes Available

ADVERTISE HERE!

Call 377-1866 and speak to an advertising representative today!

MITCHELL DIRT & ASPHALT

- Asphalt & Concrete Paving
- Dirt Work & Hauling
- Demolition

Contact Keith
377-8594 or 470-0812

K-9 Couture Sydney Edwards

- Grooming
- Boarding
- Doggie Daycare

Like us on Facebook!

415 Mapleview Drive
Minden, LA 71055
318-718-4582

Computer problems? Call Tom!

Over 25 years of service

LOUISIANA CODEWORKS

VALUE - INTEGRITY - SERVICE
IT ALL STARTS HERE.

Call Tom Grant at 318-415-0204

EMAIL US AT
TOM.GRANT@LACODEWORKS.COM

Brown Service Center

Fast oil changes, starting at \$29.99
The Best and Most Dependable Service in the Area

390-1520
904 Homer Road • Minden

Brown's Glass

See us for all your glass needs!
"Automotive" "Residential" "Commercial"

371-9898
611 Shreveport Road • Minden

"THE SIDING SPECIALIST"

ALTON TEAGUE
Owner
Phone: (318) 528-9962

Competitive Prices
Member BBB

40 YRS. OF HOME IMPROVEMENTS EXCELLENCE
616 N. Giles • Springhill, LA 71075

(318) 218-3609

METAL ROOFING • Replacement Windows
Painting • Carports
FHA Title I - Home Improvement Loans
No Down Payments/Home Improvement
Loan Up To \$48,000 as low as 4.99%

Tri-State SIDING (318)-218-3609

Changing Behavior Services, LLC

Mental Health Rehab Agency
Family, Individual & Group Counseling

Psychiatric Rehabilitation Services Includes:
• Assessment & Reassessment for MH Services
• Individual and Group Psycho-social Skills Training
• Family, Individual and Group Counseling
• Medication Management and Education

Clinical Staff Experience Includes:
• Master Level Staff
• Licensed Professional Counselors
• Licensed Clinical Social Workers

Office: 318-371-6707 Fax: 318-377-8164
114 West Union Street • Minden, LA 71055

CRUMPLER CONSTRUCTION

Custom Homes
Remodeling • Additions
Custom Decks • Driveways

318.927.2325
Licensed & Insured

HOL-MONT

Sales & Rental
YOUR OUTDOOR POWER EQUIPMENT HEAD-QUARTERS

1040 HWY. 531 • MINDEN, LA • (318) 371-0550

YOUR SOURCE FOR OUTDOOR POWER AND RENTAL EQUIPMENT!

YETI COOLERS
FULL LINE YETI DEALER!

KAMADOJOE
GRILL EQUIPMENT FOR YOUR HOME PROJECTS!

Come see us on Highway 531 just 1.5 miles north of I-20 on exit 37
Monday-Friday 8:00-5:00 Saturday 8:00-12:00

Pine Hills Country Club

1918 Lakeside Lane • Minden, LA 71055

For a perfect venue for your event, the facility at Pine Hills Country Club can meet your needs.

The members of Pine Hills Country Club cordially invite you to become a new member and enjoy three months free from dues!

For more information and a fee schedule, please visit our website at www.pinehillscountryclub.com or call 318-371-2148

Dixie Floors, Inc

Serving All Of Northwest Louisiana

Hot Deals!
All prices are INSTALLED
Starting at \$1.87 sq ft Carpet de Pad
Starting at \$3.99 sq ft Laminate
Starting at \$4.99 sq ft Ceramic Tile

Free Estimates

Across the street from Capital One Bank

318.377.8979
617 Main Street, Minden, LA

Carpet
Vinyl
Laminate
Tile
Ceramic
Wood

Exclusively at The Gift Gallery

Music of the Sphreres

HANDCRAFTED IN AUSTIN, TEXAS, USA

Hearing is believing

ACE Hardware Gift Gallery

318-382-9000
807 Homer Road
Minden, LA

WEBSTER

www.press-herald.com

BALLOT

Continued from page 1

District (an estimated \$729,400 reasonably expected at this time to be collected from the levy of the tax for an entire year), for a period of ten (10) years, beginning with the year 2016 and ending with the year 2025, for the purpose of giving additional support to public schools in the Parish of Webster, including acquiring, constructing, improving, maintaining or operating the public school system of the District?"

Statewide
Governor: Scott Angelle, Beryl Billiot, "Jay" Dardenne, Cary Deaton, John Bel Edwards, Jeremy "JW" Odom, Eric Paul Orgeron, S.L. Simpson and David Vitter.
Lieutenant Governor: Elbert Lee Guillory, Melvin L. "Kip" Holden, "Billy" Nungesser and John Young.
Secretary of State: "Tom" Schedler and "Chris" Tyson.
Attorney General: Geraldine "Geri" Broussard Baloney, James D. "Buddy" Caldwell, Isaac "Ike" Jackson, "Jeff" Landry and "Marty" Maley.
Treasurer: John Kennedy and Jennifer Treadway
Commissioner of Agriculture and Forestry: "Charlie" Greer, Adrian "Ace" Juttner, Jamie LeBranche and Michael G. "Mike" Strain.
Commissioner of Insurance: "Jim" Donelon, Donald Hodge Jr., Charlotte C. McDaniel McGehee and Matt Parker.
BESE District 4: Tony Davis, Mary Johnson Harris and Glynis Johnston.
State Senator, 36th Senatorial District: Henry Burns, Ryan Gatti and Todd Hollen-

shead.
Constitutional Amendments
Vote YES or NO
No. 1: Act 473, SB 202, Budget and Transportation Stabilization Trust
"Do you support an amendment to rename the Budget Stabilization Fund to the Budget and Transportation Stabilization Trust; to authorize the mineral revenue base to be increased every five years; to create the Budget Stabilization Subfund as a subfund in the Trust, to be funded with mineral revenues until reaching a maximum balance of five hundred million dollars, to be appropriated and used when the state has a deficit; to create the Transportation Stabilization Subfund as a subfund in the Trust, to be funded with mineral revenues until reaching a maximum balance of five hundred million dollars, to be appropriated and used for planning, design, construction, and maintenance connected with the state highway program, with twenty percent dedicated for use by the Louisiana Intermodal Connector Program; and to provide for the interruption of deposits into the Budget Stabilization Subfund and the Transportation Trust Subfund the year that the state has a deficit and the following year with the resumption of deposit of mineral revenues in the Budget and Transportation Stabilization Trust thereafter?"
A vote for would steer state mineral revenue to a new transportation projects fund and restructure the Budget Stabilization Fund.
A vote against would leave the current revenue flow and Budget Stabilization Fund intact.
No. 2: Act 471, HB 618, Funds for Transportation
"Do you support an

WHERE DO I VOTE?
Find your voting precinct online at www.geauxvote.com.

amendment to authorize the investment of funds for a state infrastructure bank to be used solely for transportation projects?"
A vote for would allow the treasurer to invest public funds in a state infrastructure bank.
A vote against would require the newly created infrastructure bank to rely on other financing.
No. 3: Act 472, HB 518, Fiscal Legislative Session
"Do you support an amendment to allow any legislation regarding the dedication of revenue, rebates and taxes to be considered during a fiscal legislative session?"
A vote for would broadly define what kind of tax and revenue bills can be filed in a legislative fiscal session.
A vote against would leave in place the specific list of allowable tax legislation for fiscal sessions.
No. 4: Act 470, HB 360, Property Tax Exemption for Public Land/Property
"Do you support an amendment to specify that the ad valorem property tax exemption for public lands and other public property shall not apply to land or property owned by another state or a political subdivision of another state?"
A vote for would require states or local governments outside of Louisiana to pay taxes on properties they owe in Louisiana.
A vote against would leave the question to the courts, which recently ruled that state or local governments outside Louisiana are exempt from property tax.
Polls open at 7 a.m. and close at 8 p.m. Saturday.

Re-elect
Jim Bonsall
District 6 Police Jury
of Webster Parish
PLEASE GO VOTE!



■ PLEASE VOTE TOMORROW ■



RYAN

**GATTI**^{#55}

STATE SENATE DISTRICT 36

JOIN US AT SMITH'S MARINE FROM 11-2 FOR HAMBURGERS AND HOT DOGS AFTER YOU VOTE.
THANK YOU, MEL SMITH, FOR YOUR HARD WORK AND SUPPORT

Paid for by Ryan Gatti Campaign Committee

RYANGATTI.COM /// (318) 752-1012