

# MINDEN PRESS-HERALD

WEDNESDAY, MAY 7, 2025 | \$1.00 | MINDEN, LA | SERVING GOD & OUR COMMUNITY | VOL. 56 NO. 19

press-herald.com

## CITY COUNCIL

### City receives clean audit, approves new appointments and legal counsel

**WILL PHILLIPS**  
Minden Press-Herald

The annual audit for the City of Minden was presented at the May meeting of the Minden City Council. Representatives Tim Green and Jennie Henry from Allen, Green, & Williamson, LLP attended to share the findings.

"The opinion, as well as in the previous years, is



COX

an unmodified opinion. That's saying that we're not recommending any modification be made to the report," said Henry.

Henry also noted that a single audit was required this year, as the city received over \$750,000 in federal funding. While last year's federal coverage totaled \$200,000, this year it was up to \$4.6 million.

These funds supported several major projects, including the construction of a parallel taxiway at the Minden Airport, a community development block grant for a sewer project, and state and local fiscal recovery funds used for the public works control center, the Community House, and the REC Center study. Allen, Green, & Williamson tested all three projects, and Green delivered their audit findings.

The main recommendations included transitioning more city departments to a time-clock system for tracking employee hours, adjusting how street infrastructure is accounted for — either by reverting to a depreciation method or changing the rating threshold — and producing an annual report for the airport improvement program.

"I think there was a great improvement on the

See, **COUNCIL**, Page 3



WILL PHILLIPS/PRESS-HERALD PHOTO

## COMMUNITY

### Minden observes National Day of Prayer with community gathering

**WILL PHILLIPS**  
Minden Press-Herald

On May 1, community members gathered at a special ceremony to mark the National Day of Prayer, joining millions across the nation in lifting up the country in faith. Led by Mayor Nick Cox and local clergy, the event focused on unified prayer for key pillars of American life: government, military, media, business, education, church, and family.

"The National Day of Prayer has a rich history, first signed into law by President Harry S. Truman in 1952 and later designated by President Ronald Reagan in 1988 as the first Thursday in May. Every president since has issued a proclamation encouraging Americans to unite in prayer," said Mayor Cox. "Here in Minden, we proudly continue that tradition, joining millions across the country in this sacred act of faith."

The program included Terry Combs leading



WILL PHILLIPS/PRESS-HERALD PHOTO

The program included Terry Combs leading the Pledge of Allegiance and a community recitation of the Lord's Prayer.

the Pledge of Allegiance and a community recitation of the Lord's Prayer. Reverend Knapp of Mt. Calm Missionary Baptist Church prayed over the government, Pastor Leland Crawford of First Baptist Church lifted up prayers for the military, Pastor Keith Mariott of Minden Presbyterian Church prayed for the media, Father Nicho-

las Duncan of St. Paul Catholic Church offered prayers for the business community, Pastor Royal Scott of Greater St. Paul Baptist Church prayed for the education system, Pastor Robert Whitaker of Victory Praise & Worship Center prayed over the church, and Reverend Steve Berger of First Methodist Church closed with a prayer for families,

asking God to strengthen homes and relationships.

Mayor Cox concluded the ceremony with a message of hope. "Let's leave here today carrying the hope and peace we've received, continuing to pray for one another and for our nation. May the God of hope guide us, and may we reflect His love in all we do."

## WPSB

### Webster Parish School Board approves one-year HVAC contract

**AMBER MCDOWN**  
Minden Press-Herald

The Webster Parish School Board approved a one-year contract with Mechanical Cooling Services, LLC during its regular meeting Monday, finalizing a \$228,000 agreement for HVAC maintenance across the district.

The contract provides for an onsite technician responsible for the daily upkeep, repair, and maintenance of heating, ventilation and air conditioning systems at all Webster Parish school facilities. The cost includes the technician's hourly wage, vehicles, tools, and regular cleaning supplies. Funding will come from School Maintenance Funds and Parish Wide Maintenance Funds. "We're hoping this will save us money in the long term," said Denny Finley, supervisor of transportation and maintenance.

Among the additional approvals was a motion to revise the FY 24-25 budget

for several district bond issue tax funds, including Districts 3, 6, 7, 8, 12, and 35. The board also approved Bonvenu Bank to serve as the Kev Group School Cash clearing account bank.

Five 18-by-28-foot metal portable buildings at the central office were declared surplus for demolition. Two additional

18-by-36-foot buildings were added to the item.

Updates to the Employee Evaluation Performance Review were approved for custodian and secretary positions, along with a revised job description for the Special Education Instructional Facilitator: Early Childhood/Low Incidence Populations.

Kevin Thompson of Taylor and Sons recognized Employee of the Month recipient for the month May to Clarence Bryant, bus driver. Details of this award will appear in a future Minden Press-Herald article.

See, **SCHOOLS**, Page 3



ROWLAND

## GRANTS

### Grant opportunity available for historic building restorations in downtown Minden

**STAFF REPORT**  
Minden Press-Herald

Owners of historic commercial buildings in downtown Minden have an opportunity to secure funding for restoration projects through the Louisiana Main Street Restoration Grant Program.

The program, administered by Louisiana Main Street, offers grants ranging from \$2,500 to \$10,000 to support interior and exterior restoration work on historic buildings located within designated Main Street districts. Applications must be submitted by May 30, 2025, and are open to both property owners and business owners.

Eligible buildings must be at least 50 years old, located within Minden's designated Main Street district, and used for commercial purposes.

Exterior work must be approved by Minden's Historic District Commission and the Louisiana Main Street office, and all work must comply with the Secretary of the Interior's Standards for Rehabilitation.

Local applicants will compete with others across the state for funding. Minden has a successful track record with the program, having received nearly \$70,000 in grant funding over the years—supporting more than \$200,000 in local project investments and contributing to job creation and downtown revitalization.

For more information or to request application materials, contact Sarah Overall, City of Minden Main Street & Economic Development Director, at [mainstreet@mindenusa.com](mailto:mainstreet@mindenusa.com).

## CRIME

### Police investigating death of 2-year-old in Minden

**STAFF REPORT**  
Minden Press-Herald

The Minden Police Department is investigating the death of a 2-year-old girl following an incident

that occurred late Thursday morning at a residence on Young Street.

According to Minden Police Chief Jared McIver, the department received a call around 10:45 a.m. reporting an

unresponsive child who was not breathing. While officers were en route to the scene, dispatch was informed that the family was transporting the child to the emergency room in a personal ve-

hicle. Efforts to resuscitate the child were unsuccessful, and she was pronounced dead at the hospital.

Initial findings from the

See, **CHILD**, Page 3

## RIBBON CUTTING

### Minden celebrates Seeds new facility



WILL PHILLIPS/PRESS-HERALD PHOTO

The Greater Minden Chamber held a ribbon cutting Wednesday afternoon, where the local community gathered to celebrate the relocation of Seeds Women's Center to their new facility located at 308 Pine Street. The new location nearly doubled the square footage from their previous offices, giving more room for them to continue their work providing services that aid women with their pregnancies and childcare.



8 95634 00207 6

Submit your news at  
[press-herald.com/submissions](http://press-herald.com/submissions)



# WEBSTER & MORE

COMMUNITY ART

## Third annual Deck'd Out 2025

**WILL PHILLIPS**  
Minden Press-Herald

Parish Design Company made a return with its Deck'd Out event, which saw over forty young talented artists throughout Webster Parish display their artwork on the interesting canvas of a skateboard deck.

"We're here tonight to celebrate some amazing artwork by students from all over Webster Parish," said event creator Patrick Miller.

Miller was inspired to

create the event as skateboard decks were an art form that pushed him to get into graphic design early in his career.

"I started in graphic design because of skateboard artwork like this. Still at fifty years old, I collect skateboard decks because it connects me to my past and the things I was passionate about as a young person learning about the arts," said Miller.

"To see this work is very exciting, because it connects my youth, but it also accentuates the fact that y'all are talented artists,

doing amazing things."

While all the decks were fantastic displays of young talent, some went above and beyond and were recognized for different categories, including most creative, best use of materials, and best in show. The Most Creative title was awarded to Sharia Washington, the Best Use of Materials was awarded to Daisy Collins, and the best in Show was awarded to Itzayeny Urbina. Honorable mentions included Ava, Skyline, Kynlee, Bella, Maggie, and Autumn.



EMPLOYMENT

## Greater Minden Chamber hosts job fair



The Greater Minden Chamber partnered with the City of Minden, The Coordinating & Development Corporation, the Louisiana Workforce Commission, and Northwest Louisiana Technical Community College in order to bring together employers and job seekers for a job fair at the Minden Civic Center. Over 50 businesses registered to put up booths and seek out potential candidates for their companies and businesses.

WILL PHILLIPS/PRESS-HERALD PHOTO

*We Will Always Remember*

# Their Courage & Sacrifice



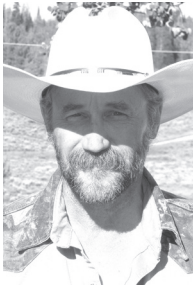
*With gratitude in our hearts, we honor the brave souls who lost their lives defending America and all that it represents. We will always remember their selfless service, their courage and their sacrifice.*

The Minden Press-Herald will be running a  
**MEMORIAL DAY SIG PAGE** on May 21st.  
Deadline to get your business listed is May 16th.  
**CALL NATHAN OR CURTIS - (318) 377-1866**



# WEBSTER & MORE

OBITUARIES



## Alan Finley

Funeral services for Alan Finley will be held Thursday, May 8, 2025, at 10:00 am at Minden Church of Christ in Minden, Louisiana with Tracy Winget officiating. Interment will follow at Evergreen Cemetery in Minden, Louisiana under the direction of Rose Neath Funeral Home in Minden, Louisiana. The family will receive friends on Wednesday, May 7, 2025, from 5:00 until 7:00 p.m. at Rose Neath Funeral Home in Minden.

Alan was born March 25, 1957, in Ft Worth, Texas and went to be with his Lord and Savior on May 4,

2025, in Arcadia, Louisiana. Alan married his childhood sweetheart and best friend in 1974. He and Connie loved traveling, and their special place was Cody Wy and Yellowstone. Alan owned and operated Mobil1 Lube center for 12 years and was an I&E inspector. He was raised with a love for bikes, especially his favorite Harley which he rode for 20 plus years.

He was preceded in death by his parents, Hugh and Glenda Finley and his brother, Cary Finley.

He is survived by his wife, Connie Finley; son Shannon Dale Finley; daughter, Sandy Finley McLeod; sister, Trena Cook; and brother, Terry Finley.

Pallbearers will be Tony Davidson, Jason Winget, Chris Winget, Jonathon Robinson, and Chris Hall.

The family extends special thanks to St. Joseph Hospice staff for the care given to their loved one.

CRIME

## Two arrested, one sought after trespassing incident and tampering with security cameras

STAFF REPORT  
Minden Press-Herald

Two individuals were arrested, Simuel Shaw and Demetrius Miller, and a warrant was issued for the third, Decorry Bridges, after they attempted to evade law enforcement by trespassing onto a residential property, feigning as though they were one of their family members. While they were there, they had removed a security camera from its premises, while a search by officers found both with a gun and drugs.

A Minden Police Officer was out on patrol when they observed three subjects walking northbound on Cherry Street in the middle of the roadway. “As I turned right onto Cherry Street from Theus Street, all three subjects walked onto the property of 636 Cherry Street and approached the front door. This is a common tactic used by criminals to avoid contact with law enforcement,” the book-

ing report stated.

The officer drove up the road, observing the subjects while waiting for officers to arrive on the scene. The officer stated in the report that Bridges appeared to be knocking on the door while Shaw and Miller waited on the side of the house.

The officer eventually approached the house and the subjects, asking what they were doing at the residence. Bridges began speaking for the group and stated that he was attempting to make contact with his Aunt. A little while later, the owners of the residence walked outside and told the officer, “They had never seen these subjects before.”

After going through the databases, it was found that the subjects had serious charges from previous arrests, but no active warrants. A frisk search resulted in law enforcement finding 8.2 grams of synthetic marijuana on Miller’s person. Miller

was advised of their rights per Miranda and taken into custody.

With the other two subjects not having any active warrants, the officers told them they were free to go. Before they left, however, an officer recommended that they walk around the residence to make sure no evidence or property was left there. After receiving permissions from the property owners, they walked to the back of the residence.

“I observed a black glock handgun with a large magazine,” the booking report stated. Another officer, “observed a removed security camera sitting on a window air conditioning unit.”

“I spoke with the residents again and confirmed the firearm did not belong to them. They also stated all previous security cameras were operational. (They) said they now wished to pursue charges.”

One of the officers se-

cured Shaw, handcuffed him, and placed him in the back of his unit. Other officers searched but were unable to locate Bridges.

Both Miller and Shaw were advised of their rights per Miranda and taken to the Minden Police Department for booking. Shaw was charged with possession of a firearm by a convicted felon, resisting an officer, criminal trespassing, and vandalizing, tampering with, or destroying a crime camera system. Miller was charged with possession of synthetic marijuana, criminal trespassing, illegal carrying of a weapon in the presence of controlled dangerous substances, and vandalizing, tampering with, or destroying a crime camera system. The booking report stated that an arrest warrant would be pursued for Bridges.

*All subjects are considered innocent until proven guilty in a court of law.*

CRIME

## Deputy finds meth during traffic stop involving suspended driver and child

STAFF REPORT  
Minden Press-Herald

A Webster Parish Sheriff’s deputy discovered methamphetamine during a traffic stop April 30 on Fire Tower Road, where a woman was found driving with a suspended license, switched tags, and a child in the vehicle, according to an arrest report.

The stop occurred around noon after a deputy observed switched li-

cense plates on a vehicle. The tag did not match the vehicle it was displayed on.

The driver, identified as Tiffany Cunningham, 36, of Shongaloo, told the deputy she did not have her driver’s license on her. During the interaction, the deputy noted Cunningham appeared nervous and avoided eye contact.

When asked if she had anything illegal on her, Cunningham reportedly

admitted to having methamphetamine concealed in her brassiere. She removed the substance and placed it on the hood of the deputy’s patrol vehicle, according to the report.

C u n n i n g h a m ’ s 7-month-old daughter was in the vehicle at the time. The deputy also discovered that Cunningham’s license was suspended and that she had outstanding warrants through the Springhill

Police Department.

She was transported and booked on charges of switched tags, driving under suspension, possession of methamphetamine, possession of a controlled dangerous substance in the presence of a minor, and being a fugitive from Springhill.

*All subjects are considered innocent until proven guilty in a court of law.*

## SCHOOLS

Continued from Page 1

The board approved field trips for Richardson Elementary’s top Accelerated Reader classes and Doyline High School’s 3rd through 5th grade students, both to the Caldwell Zoo in Tyler, Texas. Minden High School’s cheer squad will attend UCA Camp in Fort Worth, Texas in June, and three School Food Service staff members will attend a national conference in San Anto-

nio, Texas in July.

An item requesting services from Civil Design Group LLC was pulled from the agenda after Board Member Susan Addington of District 12 requested to reconsider the estimated \$800,000 parking lot project.

A base bid of \$5,877,000 was awarded to Walker Construction Company of Ruston for athletic improvements at North Webster High School and McMahan Park in Springhill.

Special Education Supervisor Melanie Lewing and staff discussed the Webster Works program, which connects students with special needs to local businesses for work experience. Five businesses are currently participating. “I’m super thrilled with where this is going,” said Jessica McKaskle, special education transition facilitator.

The board entered into executive session regarding Bradford v. WPSB,

Docket #23-05781, and voted afterward to resolve the case based on 60% of the attorney’s recommendation.

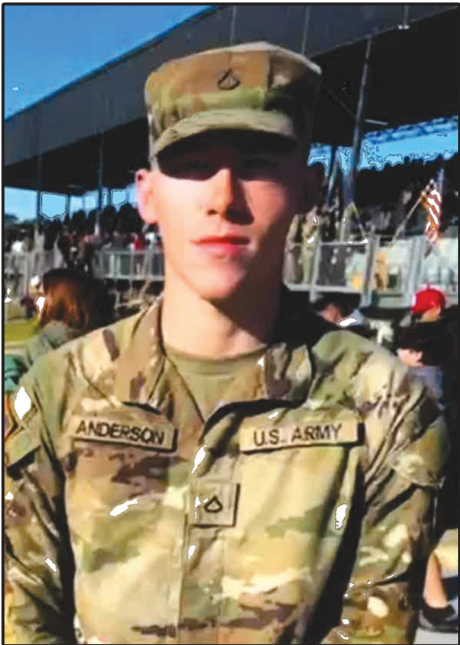
The May 5 meeting was held at the WPSB offices, with all members present except Charles Strong of District 3. All items on the agenda were approved unanimously. The board’s next meeting is scheduled for Monday, June 2 at 6 PM at the school board office on Sheppard Street in Minden.

## DEPENDABLE CAREGIVER SEEKING WORK.

Have references if needed.  
Call **318-224-3813**  
or **318-268-8842.**

*Leave message if no answer.*

## CONGRATULATIONS LANDON ANDERSON!



**Landon recently graduated from Fort Jackson, S.C. as an E3. Landon is also a 2024 graduate of Lakeside High School and is the grandson of Bobby and Teresa Davis.**

## COUNCIL

Continued from Page 1

condition over financial reporting. The condition rating for the street system, you just need to consider that and make a decision on that. The airport improvement program, now that you’re aware that it just needs annual reporting, I think that’s simple to fix,” said Green.

“The other item was just the matter as far as the time clock system, and trying to get everybody on that program.”

Green also extended appreciation to city staff for their cooperation. “Your staff was really great at helping us, and we really appreciate that really much,” he said.

Following the audit presentation, Mayor Nick Cox emphasized its importance: “The audit is how we know if we’re doing our jobs right or not, and keeps us accountable to the citizens, and this is your demonstration that we’re trying our best to run the city as appropriately and right as we can.”

In other council business, several appointments to boards and commissions were approved. Kasi Kendrick was appointed to the Minden Main Street Pro-

gram/Downtown Development Commission, with her term ending September 8, 2026. Derek Peris was appointed to Minden Downtown with a term expiring December 31, 2028. Elizabeth Hollingsworth was re-appointed to continue serving, with her new term also expiring on December 31, 2028.

The council additionally granted the mayor authority to retain attorney Michael Busada as outside counsel for the city. “This is to hire a bonding attorney for our recreation complex enhancement project. We felt like Mike Busada would be good legal counsel from a bonding aspect, although we may very likely not bond. We still need to go through the approval process and get all the clearances and blessings legally that we can,” said Mayor Cox.

The monthly Minden City Council meetings are held on the first Monday of each month at 6 PM at the Minden Civic Center. Meetings are open to the public and are also livestreamed on the City of Minden’s Facebook page and YouTube channel, both titled “City of Minden,” for those who cannot attend in person.

## CHILD

Continued from Page 1

ongoing investigation reveal that the 2-year-old and a 10-month-old child had been left unattended inside the home, strapped in car seats. Chief McIver stated that early indications suggest the child may have slipped into a slouched position within the car seat, possibly leading to restricted breathing. Investigators believe the car seat may not have been properly secured or used in accordance with safety guidelines.

“It appears the child may have been improperly restrained, and we’re trying to determine why they were in car seats inside the home without adult supervision,” McIver said. “We’re still piecing the puzzle together and waiting on the results of the autopsy to confirm the exact cause of death.”

Authorities have

not yet confirmed how long the children were left alone or how many adults reside in the home. “Right now, there’s a lot of fingerprinting, but we do know there were no adults inside the house when this happened,” McIver added.

Detectives are continuing to interview individuals connected to the case. No charges have been filed as of press time, but officials indicated that charges are likely, pending the results of the autopsy and further investigation.

“We may know by tomorrow or the next day whether charges will be handed down,” McIver said. “It’s a very difficult situation, and we want to be thorough in our investigation.”

The identity of the child has not been released, and the case remains under active investigation.

Submit your news at  
[press-herald.com/submissions](https://press-herald.com/submissions)



OPINION

MINDEN  
PRESS-HERALD  
203 GLEASON STREET  
MINDEN, LOUISIANA 71055  
318-377-1866  
www.press-herald.com  
USPS NUMBER 593-340

RANDY BROWN  
Executive Vice President  
& Publisher

JOSHUA SPECHT  
Editor

AMANDA ANDERS  
Accounting/  
Circulation Manager

AMBER MCDOWN  
Reporter

WILL PHILLIPS  
Reporter

RUSSELL HEDGES  
Sports Editor

NATHAN MILLS  
Advertising Manager

CURTIS MAYS  
Advertising Executive

The Minden Press-Herald is  
published Wednesday by  
Specht Newspapers, Inc. at  
203 Gleason Street, Minden,  
Louisiana 71055.

Telephone: (318) 377-1866.

Entered as Periodicals at the  
Post Office as Minden Press-  
Herald, P.O. Box 1339, Minden  
LA 71058-1339.

Subscription rate: \$40 per year.

POSTMASTER: Send address  
changes to Minden Press-  
Herald, P.O. Box 1339, Minden,  
LA 71058-1339.

THE MINDEN  
PRESS-HERALD  
WELCOMES  
LETTERS TO THE EDITOR.

HERE ARE OUR GUIDELINES:  
Letters are published  
identifying name, occupation  
and/or title and the writer's  
city of residence. Letters are  
not to exceed 500 words.

Send letters to: Letters to the  
Editor, Minden Press-Herald,  
P.O. Box 1339, Minden, LA  
71055, or email to:  
newsroom@press-herald.com.

OPINION

The First 100 Days of Trump

*“The Golden Age of America begins right now, during every single day of the Trump administration, I will very simply put America first ... And our top priority will be to create a nation that is proud, prosperous, and free.”  
Trump Inaugural Address*

I would be remiss not to observe the first 100 days of the second Trump Administration. They have been outstanding, one of the most consequential starts to a presidential term in our history. We may not fully recognize for years the fundamental restructuring that is occurring in our country, and the world.

While there is simply not space to list all the Trump 2.0 accomplishments, let me attempt to list the major ones.

He has secured the border—there are virtually no illegals coming in; he has pushed back forcefully against China, with both rhetoric and onerous tariffs, and he has completely unleashed American domestic energy production.

Regarding illegals, Trump has not only dramatically curbed the flow on both our southern and northern borders, he is also fighting back hard against the drug trade (including enormous amounts of fentanyl), human trafficking, and terrorists, as well. He declared a national emergency to stem the illegal invasion, directed military troops to the border, reinstated the highly effective Remain-in-Mexico

policy, completely ended “catch-and-release,” revved border wall construction back up, designated criminal drug cartels as “foreign terrorist organizations,” and ended birthright citizenship.

However, although a stunning amount of progress, illegal immigration, China and unleashing American energy barely scratch the surface.

Trump has also broadly imposed a tariff regime that



ROYAL  
ALEXANDER

Elon Musk and his Department of Government Efficiency (DOGE) to uncover more corruption and fraud than we could have ever imagined was occurring with American taxpayer dollars. All these actions taken together are driving down the inflation rate after four years of the highest inflation in 45 years, if not our nation's history. (See the price of eggs and the cost of a gallon of gasoline.)

Still further, President Trump has attacked the transgender delusion by blocking males from competing against women in sports. (See the state of Maine). He has simultaneously attacked so-called

Diversity, Equity, and Inclusion (DEI) initiatives across the federal government and in any American institution that receives federal funds, by threatening to block those federal funds.

In addition, he is dismantling the Department of Education which has done less to teach—and more to indoctrinate—students than can be imagined. Those education funds will now be—in a fashion that is both targeted and smart—block-granted to the states who know far more about their specific education needs than the federal bureaucracy in D.C.

Trump has also directly attacked antisemitism on college campuses by, again, demanding that if college campuses don't reform their blatant bigotry and viewpoint discrimination, they won't receive federal funds. (See Harvard).

Trump is also vastly improving the morale of our military men and women, see the dramatic increase in military enlistments and individuals wanting to serve in border enforcement. He has returned our military to its one core and critical mission: lethality.

Globally, Trump has our enemies back on their heels. China has halted for now its imperialist designs and Iran is back at the negotiating table, well aware of Trump's demand that Iran will “never possess a nuclear weapon.” I do believe Trump will end the Russia-Ukraine war. I also believe he will do ev-

erything he can to extract valuable commodities from Ukraine to offset the \$350 billion (stupidly unsecured by the Biden Administration) America has given Ukraine.

Perhaps most importantly, Trump is bringing to a head out-of-control federal judges. Who tells the Judicial Branch—nothing more than a co-equal branch—that it has exceeded its authority? Constitutional law expert, Jonathan Turley, asserts that “federal judges have over-extended themselves, they have intruded into areas of Article II, which is presidential authority ...” Trump has now forced the U.S. Supreme Court to address these rogue judges and, in particular, the nationwide injunctions blocking the president from exercising his core powers.

With this dizzying number and pace of accomplishments, the nation waits with great hope and promise for the next 100 days. All patriotic Americans should continue to support and pray for President Trump—for his success and physical safety from additional assassination attempts—as he leads our nation and the world away from the brink of economic and military disaster.

SHREVEPORT ATTORNEY, ROYAL  
ALEXANDER, WORKED IN D.C. IN THE  
U.S. HOUSE OF REPRESENTATIVES FOR  
NEARLY 8 YEARS FOR TWO DIFFERENT  
MEMBERS OF CONGRESS FROM  
LOUISIANA.

INSPIRATION

Mark Twain said, “Write what you know about”

Mark Twain said “write what you know about.”

Back pain -- I could write a book about it!

According to Comprehensive Pain Specialists, “pain not only affects more Americans than diabetes, heart disease and cancer combined but workers lose an average of 4.6 hours per week of productive time due to pain and 20 percentage of Americans pain disrupts their sleep a few nights a week or more and 80 percent of people in the United States will experience back pain at some point in their lives. Besides the common cold, back pain is the number one reason people visit their family doctors.”

The bottom line is that we can't get through this life without a little pain but that doesn't diminish the pain that I have experienced for the past few years. Anyone who has suffered back pain can identify with the misery that goes with not getting a good nights sleep.

Not only has back pain become more intense, interrupting my quality of life for

the past five years, though it has taken all the grit, raw courage and determination I struggle to write the stories that are so much a part of who I am!

I feel I have a mission to legacy for my family and for those who might appreciate my slant on life.



SARAH  
HUDSON  
PIERCE

believe that Bill Moyers, best selling author of Healing and the Mind, was right in teaching that there is a strong connection between the mind and the body!

Ever since 1976 when we lived in Cleveland, Arkansas, where our youngest son, Jeremy, was five months old, I experienced my first bout of back pain, which lasted about a week, I learned that I could

only find relief by lying flat on my back -- often on a heating pad and accompanied by muscle relaxers.

Since then I've discovered other exercises that offer relief within minutes.

I always thank God when I awake without any pain even though my relief may be temporary!

Almost everyone I talk to about my back pain knows exactly what I am talking about!

After numerous tests and x-rays and an MRI a conclusion was reached the conclusion was reached that surgery really isn't an option. I don't really want surgery but I would like a quick fix that would get me on the road to recovery!

After visits with my beloved primary physician and a spine specialist in Shreveport, I think I have made my decision to learn to cope with my pain the best I can. These doctors helped me to see that the only long-term relief is for me to resume my exercise program though I am a bit on the lazy side when it comes to exercise -- but now I am back to walking and my pain some-

times seems more manageable but I just wonder could my pain be psychosomatic?

I am also using Omega-XL, promoted by Larry King, and I have noticed a gradual improvement, being pain free for longer periods of time.

Just to have a few hours of life without pain makes me euphoric! Just to know that others have experienced our kind of pain - whether physical or emotional gives us strength to go on which leads me to my bottom line!

I believe it takes experiencing deep pain to help us grow - to become who we were meant to be - so that we can reach out and lend support to those who need it most and it's when we drop our barriers and allow others into our private world that we are joined together as one large family.

After all “we are angels flying with only one arm and we can only fly embracing each other.”

CONTACT SARAH AT SARAH@AOL.COM

203 GLEASON STREET

Preserving the Heart of Minden: The Vital Role of Our Historic Downtown

In the ever-evolving landscape of retail and commerce, it's easy to be drawn to the convenience of modern shopping centers and bustling corridors like Homer Road. Yet, amidst this progress, we must not overlook the enduring significance of our historic downtown—a place that embodies the soul of Minden.

Downtowns serve as the heartbeat of communities, offering a unique blend of history, culture, and identity. They are where our stories began and continue to unfold. Visitors often form their first impressions of a town based on its downtown, making it a critical touchpoint for tourism and local pride.

Recognizing the impor-

tance of preserving these treasures, the Louisiana Main Street Restoration Grant program has become a beacon of hope for communities like ours.



DAVID  
SPECHT

Offering grants ranging from \$2,500 to \$10,000, this initiative supports the restoration of historic commercial structures within designated Main Street districts, including Minden. These funds can be utilized for both interior and exterior improvements, provided the work aligns with specific

“Downtowns serve as the heartbeat of communities, offering a unique blend of history, culture, and identity. They are where our stories began and continue to unfold.”

preservation standards.

The impact of this program is tangible. Over the years, Minden Main Street has secured nearly \$70,000 in grant funding, catalyzing more than \$200,000 in local project investments. These efforts not only rejuvenate our historic buildings but also stimulate job creation and economic activity, breathing new life into our downtown.

To qualify for the grant, buildings must be at least 50 years old, located within the designated Main Street dis-

trict, and used for commercial purposes. All proposed work must receive approval from the local historic district commission (for exterior projects) and the Louisiana Main Street program, ensuring that restorations honor the architectural integrity and historical significance of our structures.

Applications are due by May 30, 2025. For more information or to apply, interested parties should contact Sarah Overall, Main Street and Economic Development

Director for the City of Minden, at [mainstreet@mindenusa.com].

Investing in our downtown is more than a nod to the past; it's a commitment to our future. By preserving the character and charm of our historic core, we reinforce Minden's unique identity and ensure that our community remains a vibrant place to live, work, and visit.

Let us embrace the opportunity to revitalize our downtown, honoring the legacy of those who came before us while paving the way for generations to come.

DAVID SPECHT IS PRESIDENT OF  
SPECHT NEWSPAPERS, INC., PUBLISHER  
OF THE MINDEN PRESS-HERALD, BOSSIER  
PRESS-TRIBUNE, AND BIZ MAGAZINE.



SPORTS

HIGH SCHOOL BASEBALL

Glenbrook falls in second round

RUSSELL HEDGES  
Minden Press-Herald

The No. 5 seed Glenbrook Apaches fell to No. 12 Ouachita Christian 7-2 in the second round of the select Division IV playoffs last week at Glenbrook.

Glenbrook closed its season 15-10. Ouachita Christian (16-15) avenged a 4-2 loss to Glenbrook in the quarterfinals last year.

The game also brought to an end the outstanding high school career of Glenbrook multi-sport athlete Easton Sanders, a Louisiana Tech signee.

Sanders led the Apaches to a state runner-up finish last season and a semifinal appearance in 2023. As a quarterback, he helped the Apaches make multiple playoff appearances.

Sanders pitched 6 2/3 innings. He allowed five hits, struck out two and walked four.

At the plate, he went 2-for-4 with a double.

Dawson Day also went 2-for-4 with a double.

Ouachita Christian's Karson Trichel pitched a complete game. He allowed



ROBERT SUMMERLIN/PRESS-HERALD  
Glenbrook's Ryan Reagan makes a throw during last week's select Division IV playoff game against Ouachita Christian.

eight hits, struck out nine and walked two.

The Eagles opened the scoring with two runs in the top of the second on two walks, a single and a sacrifice bunt.

OCS went up 4-0 in the fifth, scoring two thanks to a walk, error and single.

The Apaches had their chances in the first four innings. They stranded two in

the second, one in the third and one in the fourth.

Glenbrook finally broke through in the bottom of the fifth.

Hudson Glasscock reached on an error and advanced to second on a sacrifice bunt by Darron Hollingsworth. Seth Mangrum's two-out single scored Glasscock.

But the Eagles answered

in the top of the sixth with a run on a two-out single by Luke Vidrine.

It looked like the Apaches might pull off a comeback in the bottom of the inning.

Ryan Reagan doubled with one out. Sam Ricord and Preston Frye had back-to-back singles, getting the Apaches within three.

A groundout put runners at second and third with two outs. But Trichel ended the threat with a strikeout.

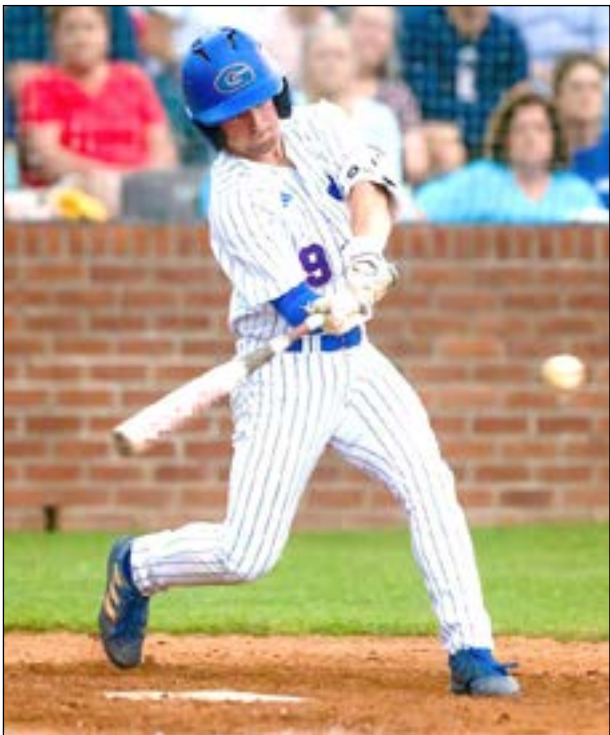
The Eagles then added two more runs in the top of the seventh. William Raymond got the big hit, a two-out, two-RBI single.

Sanders led off the bottom of the seventh with a double in his final at-bat. But the next three Apaches went down in order.

Sanders and teammate Jackson Waller will have one more chance to represent Glenbrook. They have been selected to the West team for the Louisiana Baseball Coaches Association/Louisiana High School Coaches Association All-Star Games to be held May 23-24 in Pineville.



ROBERT SUMMERLIN/PRESS-HERALD  
Glenbrook's Easton Sanders pitched the final game of his outstanding career last week in the second round of the playoffs.



ROBERT SUMMERLIN/PRESS-HERALD  
Glenbrook's Seth Mangrum bats during a select Division IV second-round game against Ouachita Christian last week

Doyline drops heartbreaker in second round of playoffs

RUSSELL HEDGES  
Minden Press-Herald

The No. 14 seed Doyline Panthers were three outs away from knocking off No. 3 Family Community in the second round of the non-select Class B playoffs last Saturday in Winnsboro.

Doyline led 5-3 going into the bottom of the seventh. But the Warriors tied it on a two-RBI double with one out.

The Panthers put two runners on in the top of the eighth but couldn't get a run.

Family Community then won it 6-5 on an RBI-

single by Kyler Roberts with two outs in the bottom of the inning.

It was the second year in a row that Doyline's season ended in heart-breaking fashion against a high seed. Last year, the Panthers lost to eventual champion Quitman 4-3 in the second round.

Doyline finished 13-14. The game brought an end to the outstanding high school career of Doyline pitcher Noah Spears, who is bound for Northwestern State.

Spears scattered eight hits, struck out eight and walked three. Only three runs against him were

earned.

Spears' two-RBI double with two outs in the top of the seventh gave the Panthers the 5-3 lead.

Jonas Florence had a big game, going 3-for-3 with a double. James Dodge and Zack Moseley had singles.

The game resumed last Saturday with Doyline up 1-0 in the bottom of the second after being suspended Friday because of inclement weather.

Family Community took the lead with two runs in the bottom of third. The Warriors went up 3-1 in the fourth.

Doyline tied it with

two in the top of the sixth. Dodge led off with a single. Florence was intentionally walked with one out.

Zach Normand hit a ground ball and reached on an error.

Dodge scored and Florence moved to third. Dario Galvez's sacrifice bunt scored Florence with the tying run.

The Panthers then took the lead in the seventh. Leadoff batter Cooper Hayes was hit by a pitch. Moseley followed with a single. Ayden Moreno-Taule's sacrifice bunt moved the runners up a base. That set the stage for Spears' double.

Lakeside's Jon Jon Dick named District 3-2A Hitter of the Year

RUSSELL HEDGES  
Minden Press-Herald

Lakeside senior Jon Jon Dick has been named the Hitter of the Year on the All-District 3-2A team selected by the district's coaches.

Dick, a catcher, batted .505 with 12 doubles, five triples and 31 RBI.

Lakeside's Bob Gray, a Hall of Famer who returned as head coach this season, was named Coach of the Year. The Warriors went 20-16 overall and shared the district championship with Many at 8-3.

Many's Tuffy Cutrer was named Pitcher of the Year.

Other Lakeside players making the first team were senior pitcher Eli

Campbell, senior infielder Peyton Gray, sophomore infielder Gage Williams, junior outfielder Brock Case and sophomore utility Drake Chreene.

Campbell went 8-3 with an ERA of 2.90. He struck out 47 in 62 2/3 innings.

Gray batted .434 with six doubles, one triple and 19 RBI. Williams batted .404 with five doubles, one home run and 32 RBI.

Case batted .319 with six doubles, one triple and 14 RBI. He also had a fielding percentage of .980. Chreene batted .374 with six doubles and 28 RBI.

Junior infielder Jake Glass and junior outfielder Noah Redding made the second team.



COURTESY PHOTO  
Lakeside's Jon Jon Dick has been named the Hitter of the Year on the All-District 3-2A team.

HIGH SCHOOL SOFTBALL



COURTESY PHOTO  
Lakeside's McKenna Chreene has been named the MVP on the All-District 3-2A team.

Lakeside's Chreene named 3-2A MVP

RUSSELL HEDGES  
Minden Press-Herald

Lakeside senior McKenna Chreene has been named the MVP on the All-District 3-2A team selected by the district's coaches.

Chreene, a pitcher, was 16-5 for the undefeated district champion Lady Warriors. She struck out 151 in 128 1/3 innings with an ERA of 4.09.

Chreene also batted .549 with 18 doubles, one triple, eight home runs and 46 RBI.

Lakeside's Brittany Frazier Smith was named Coach of the Year.

Lakeside went 26-6 and reached the quarterfinals of the non-select Division IV playoffs. The Lady Warriors made the quarterfinals for the first time in school history. The 26 wins and winning percentage of .788 were also school records.

The team hit 28 home runs and scored 360 runs, both school marks. Lakeside defeated 12 teams it had losing records against, including five the Lady

Warriors had never beaten.

Six other Lady Warriors made the first team — sophomore catcher Emily Jones, sophomore infielder Raleah Harris, junior infielder Meredith Robinson, junior outfielder Teal Austin, senior outfielder Paiton Levesque and sophomore utility Madilynn Squyres.

Jones batted .567 with 16 doubles, two triples, 11 home runs and 50 RBI. She also had a fielding percentage of .987.

Harris batted .426 with nine doubles, four triples, three home runs and 42 RBI. Robinson batted .410 with 12 doubles, two home runs and 26 RBI.

Austin batted .320 with three doubles, four triples, one home run and 41 RBI. Squyres batted .343 with three doubles, one triple and 26 RBI. She also had a fielding percentage of .978.

Seventh-grade infielder Madisyn Jernigan, seventh-grade utility Ella Wood and sophomore utility Maggie Mandino made the second team.

COLLEGE FOOTBALL

GSU to open 2025 season in Shreveport

GRAMBLING STATE  
ATHLETIC  
COMMUNICATIONS

Grambling State will open the 2025 football season in the Shreveport Kickoff Classic versus Langston University at Independence Stadium at 7 p.m. on Aug. 30.

"We're thrilled to open our season with the Shreveport Kickoff Classic against a outstanding program like Langston University," said GSU Vice President for Intercollegiate Athletics Dr. Trayvean D. Scott. "This matchup not only showcases two storied institutions but also brings our passionate fan base together in a city with deep cultural and athletic ties to Grambling State. It's more than a game—it's a celebration of tradition, excellence, and community."

"This will surely be an epic battle of the big cats! I am excited for our football team to play in the same location as the Independence Bowl," said Langston Director of Athletics Donnita Drain-Rogers. "Our Lions as well as the Langston University Marching Pride Band will have the opportunity to showcase their talents on one of the biggest HBCU stages of the year."

The 2025 game marks a return to Shreveport for GSU, who last competed in the Shreveport Classic in 2022 when the Tigers defeated Northwestern State 47-21. Grambling State has played 20 games in the city of Shreveport and sports a 16-3-1 all-time record.

GSU and LU have played each other six times since 1977 with the G-Men holding a 5-1 series lead. Grambling State and Langston last met in 2008 with GSU winning 13-2.

The Shreveport Kickoff Classic has its roots in the former Red River State Fair Classic, began in 1911.

Season tickets for the 2025 Grambling State football season will include home games versus Langston (Aug. 30), Kentucky State (Sept. 13), East Texas A&M (Sept. 20), Texas Southern (Homecoming, Oct. 11), Alabama A&M (Nov. 1) and Bethune-Cookman (Nov. 8).

Grambling State is the designated home team for the contest and fans can purchase tickets at [www.gsutigers.com](http://www.gsutigers.com) when sales begin. In addition, fans will have the option for prepaid parking or reserved tailgate space (or RV hookups) at the Independence Bowl Stadium.



SPORTS

Russell Hedges, Sports Editor  
rhedges@spechtnewspapers.com

HIGH SCHOOL TRACK AND FIELD

Minden’s Neal, Britton qualify for 4A state meet

RUSSELL HEDGES  
Minden Press-Herald

Minden’s Porter Neal and Brayden Britton qualified for the Class 4A state meet last week.

Neal won the boys 400 in 49.54 seconds in the Region I-4A meet at Tioga High School. Washing-

ton’s Jaylon Nelson was second in 50.33.

Britton finished second in the boys 110 hurdles in 16.36. West Ouachita’s Lorenzo Price won in 16.10.

The top three finishers in each individual event and relay qualified for the state meet Saturday at LSU. Fourth-place finish-

ers serve as alternates.

Minden’s Prynness Lathon came close to qualifying in the girls 100 with a fourth-place finish in 13.10.

Third-place finisher Malaysia Davis of Northwood ran a 13.07.

Minden finished fourth in the boys 4X400 relay.

Glenbrook’s Clemons, Heflin qualify for 1A state meet

RUSSELL HEDGES  
Minden Press-Herald

Glenbrook’s Trent Clemons and Ella Heflin qualified for the Class 1A state meet with top-three finishes in the Region I-1A meet last week.

The Class 1-1A meet is Thursday at LSU

Clemons finished second in the boys 3,200 in 11 minutes, 36.11 seconds. Cedar Creek’s Luke Alexander won in 10:59.35.

Ella Heflin finished third in the girls discus with a throw of 87 feet,10.5 inches. Plain Dealing’s Brianna Newton won with a 108-4.

Anna Morales finished fourth in the girls javelin



COURTESY OF GLENBROOK YEARBOOK STAFF  
Glenbrook’s Trent Clemons finished second in the 3,200 in the Region I-1A meet last week.

tance was 90-6.5. Third-place finisher Makenzie Jones of Cedar Creek threw a 96-2.25.

Franklin Bridwell finished fifth in the boys shot put. His throw of 39-3.25 was just 4.25 inches less than that of third-place finisher Samplice Simien of St. Frederick.

Clemons also finished fifth in the 1,600, less than five seconds behind third-place finisher Caiden Finley of LaSalle.

Mattison Fowler was fifth in the girls 800 in 2:46.39. Third-place finisher Bradie Eppinette of Cedar Creek ran a 2:28.34.

St. Frederick won the girls division and Haynesville won the boys.



COURTESY OF GLENBROOK YEARBOOK STAFF  
Glenbrook’s Ella Heflin finished third in the discus in the Region I-1A meet last week in Sibley.

Lakeside’s Bradley qualifies for state meet in three events

RUSSELL HEDGES  
Minden Press-Herald

Six Lakeside athletes qualified for the Class 2A state meet with top-3 finishes in the Region I-2A meet last week in Shreveport.

The Class 2A state meet is Friday at LSU.

Lexi Bradley qualified in three events.

She finished second in the 800 in 2 minutes, 34.15 seconds. Ouachita Christian’s Leah Baker won in 2:30.45.

Bradley finished third in the 3,200 in 13:49.20. Ouachita Christian’s

Caroline Pankey won in 13:49.20.

Bradley teamed with Angel Collins, Bailey Mangrum and Alexis McIntosh for a runner-up finish in the 4X800 relay in 11:17.13. Ouachita Christian win in 11:03.48.

McKenzie Chase was second in the pole vault with a 9-0. Ouachita Christian’s Kelsey Woods won with a 9-6.

Ryleigh Taylor and Annie Cooper posted fourth-place finishes and will be alternates for the state meet.

Taylor was fourth in the 200 and long jump.

In the latter, her jump of 15 feet, 7 inches was just one inch less than that of third-place finisher Germanee Robertson of Mansfield.

Cooper was fourth in the 800.

Lakeside finished fourth in the girls division with 43 points. Ouachita Christian won with 102 and Mansfield was second with 88.

Kentravion Miller was Lakeside’s lone state qualifier in the boys division. He finished second in the shot put with a throw of 44-6.75. Ouachita Christian’s Jackson Mann won with a 49-3.5.

Three Doyline athletes qualify for Class B state meet

RUSSELL HEDGES  
Minden Press-Herald

Three Doyline athletes qualified for the Class B state meet with top-three finishes in the Region I-B meet last week at Quitman.

The state meet is Thursday at LSU.

Jonas Florence won the boys discus with a throw of 118 feet, 7.5 inches. Choudrant’s Sawyer Cunningham was second with a 105-7.25

Zach Moreno was a

close second in the boys 3,200 in 12 minutes, 4.58 seconds. Converse’s Clayton Rivers won in 12:01.60.

Zach Normand was third in the boys triple jump with a distance of 38-10. Castor’s DeAndre Clark won with a 43-6.5.

North Webster sweeps 4X100 relays in Region I-3A meet

RUSSELL HEDGES  
Minden Press-Herald

North Webster swept the 4X100 relays in the Region I-3A meet last week at West Monroe.

The foursome of Xaelin Gladney, J’Kobe Lawson, Dejuan Coleman and JD Hardin won the boys 4X100 in 42.25. Bunkie was second in 42.91.

The foursome of Shakyra Hawkins, Tatyana Lawson, Xhailor McGlothan and Kylee Sanders won the girls 4X100 in 50.97. Bunkie was second in 51.82.

The top three finishers in each individual event and relay qualified for the

Class 3A state meet Friday at LSU. Fourth-place finishers serve as alternates.

Gladney finished second in the 100 in 10.80 and the 200 in 22.80. Bunkie’s Kyle Johnson won the 100 in 10.68 and the 200 in 22.67.

McGlothan was second in the 100 in 12.57. Lawson finished third in 12.64. Mamou’s Arionna Ardoin won in 12.19.

The foursome of Lawson, McGlothan, De’Maiyh Moore and Sanders was second in the 4X200 relay in 1:49.17. Bunkie won in 1:46.75.

Tomiyah Hawthorne finished third in the shot put with a throw of 31

feet, 9 inches. Bastrop’s Modesty Smith won with a 35-8.

Sanders was third in the triple jump with a 34-6.25. Sterlington’s Layla Crawley won with a 35-6.5.

J’Kobe Lawson finished fourth in the 100 in 10.98. Third-place finisher Zaylin Singleton of Covington ran a 10.91.

The foursome of Hardin, Coleman, Dante Owens and Jakayden Jackson was fourth in the 4X200 in 1:32.98. Richwood was third in 1:32.51.

Hawkins was fourth in the girls long jump with a 15-6.5. Marksville’s Aneshia Reed was third with a 15-10.

OUTDOORS

Squirrel hunting in spring is not the same

GLYNN HARRIS

Since I was a little bitty kid, squirrel hunting was high on my list of fun things to do. Following along behind my dad, careful not to step on dry sticks or big brown leaves, I watched him as he sneaked up on a feeding squirrel.

Observing the way he did it, sneaking up behind a big tree to conceal his movements, he would get the squirrel in his sights, hit the trigger and to a kid, it was thrilling to watch the squirrel tumble to the ground in a shower of leaves. He would let me go pick up the squirrel, bring it to him as he slipped in in his vest.

As I grew older, dad got me a second-hand .22 rifle, gave instructions about how to handle the rifle safely and taught me to shoot it. Eventually, I was permitted to take my .22 with me as I tagged along with him, finally letting me try my hand at downing a squirrel. I’d miss; he’d finish the job with his shotgun until I was finally proficient at bagging a squirrel or two myself.

Once we got home, I helped him clean squirrels we had bagged where they were turned over to my mom who would convert a freshly cleaned squirrel to a fine meal. Older squirrels, too tough to fry, were slow cooked until tender. If



Hunting squirrels during the May spring hunting season when foliage is green is different from fall when leaves have fallen.

it was young enough to fry, she would place the pieces of squirrel, all crispy and tasty on a platter alongside a bowl of rice and the gravy she made from the drippings. Adding a pile of her homemade biscuits, this was a meal that would rival anything Col. Sanders could produce with his yard birds.

Squirrel hunting, especially on opening day, became a tradition for me and I hunted them early in season for decades until walking the woods and sneaking up on squirrels became more than an aging body could handle.

A few years ago, the Louisiana Department of Wildlife and Fisheries, (LDWF) opened a spring season for squirrels that took place during the month of May. I decided to try it but it just wasn’t

the same as being in the woods on chilly mornings after squirrels. Something about being there in woods that had greened up with purple martins twittering overhead just didn’t seem the same, so I never went back.

That time is on us once again as our spring season started on Saturday May 3 to run through May 25. Daily limit is three with possession limit of nine.

There are some who look forward to the spring squirrel season for a couple of reasons. First, it’s a great time to take a youngster out without having to worry about coming in contact with other hunters after deer or turkeys. Secondly, the quality of squirrels taken in spring is better on the dinner table than those you get in fall. According a friend of

mine from Arkansas who loves to squirrel hunt in spring, the meat is sweeter because the squirrels are feeding on tender buds and shoots while in fall and winter, the diet is hard mast, and this apparently makes the taste stronger.

Season is open on private lands while some state wildlife management areas are closed. If you decide to give it a try on a wildlife management area, you’ll need to check with LDWF to see which areas are open.

Now that spring turkey season is coming to a close but you still have a hankering to hunt, you might want to give spring squirrel hunting a try. As for me, I think I might sneak out to a private pond where the bluegills are bedding. That just seems more natural to me.

Fishing Report

**BUSSEY BRAKE** – Lots of big bass to 12.7 pounds are being caught fishing topwaters early around shallow brush and flipping jigs and soft plastics later. Crappie have moved from the shallows to deeper water. The bream are bedding around the edges of the brush. For latest information, contact the Honey Hole at 323-8707.

**OUACHITA RIVER** – High water. No fishing report. For latest information, contact the Honey Hole Tackle Shop at 323-8707.

**LAKE D’ARBORNE** – Bass are in transition moving away from shallow spawning areas and are around the secondary points where soft plastics and crank baits are picking up some fish. Crappie have begun to move out to deeper water. Jigs and shiners are taking some nice fish. Bream are bedding shallow and hitting worms and crickets and catfish are good fishing off the banks. For latest information, call Anderson Sport Center at 368-9669 or Honey Hole Tackle Shop at 323-8707.

**LAKE CLAIBORNE** – Crappie have moved to deeper water and are suspended in 14-18 foot water where jigs and shiners are picking up some post-spawn fish. Bass have moved to secondary points and

hitting soft plastics and crank baits. Bream are on the beds and worms and crickets are working on them. Strippers are beginning to school and hitting shad imitations. For latest information, call Kel’s Cove at 927-2264 or Terzia Tackle at 278-4498.

**CANEY LAKE** – Crappie have moved from the shallows and are suspending in 14 foot water. Jigs and shiners are picking up a few. Bass have moved off the banks and are suspended around secondary points where crank baits, Sinkos and soft plastics are picking up some fish. Bream both chinquapins and bluegills are on the beds and hitting crickets and worms. No report on catfish. For information contact Caney Lake Landing at 259-6649, Hooks Marina at 249-2347, Terzia Tackle at 278-4498 or the Honey Hole Tackle Shop at 323-8707.

**LAKE POVERTY POINT** – Catfish and bream are biting. Crappie and bass have moved to deeper water away from spawning areas. For information, contact the marina at 318/878-0101.

**LAKE YUCATAN** – Water is high with a slow fall just now starting. Lots of floating logs and debris making boating hazardous. No fishing report. For info call Surplus City Landing at 318/467-2259.



# Good News

GOOD NEWS

## Mama—A Proverb 13: 24 Woman

We all have heard the Proverb 31 passage used to describe some women, I am sure. I have, and rightly so! For some women, yes! But my Mama was not in that league. I guess she was in the “minors” compared to a Proverbs 31 model. Proverbs 13:24 better defined her and my daddy! Now she qualified in some of these areas, but she was more of a “workhorse, a dependable servant, with an humble spirit”. Being a woman of limited education (school drop-out in grade 7 to help her family make a living), Mama did not spend much time writing or reading. No, to birth seven rowdy Crider children, to help put vittles on the table three times a day, plus keep up with all the other duties of a mother and farmer’s wife, made for a very durable and tough package. That’s Mama!

With Mama and Daddy, “work” was the name of the game we played. And we played it from daylight until dark. (I’m using the word “played” very loosely!) To waste an hour of daylight “doing nothing” was akin to sin itself! They set the example. Rising early and working late into the night was just what every “decent farm family” did. And we were no exception! When I think of the amount of work they produced, especially my Mama, I am so conscious of their honesty about a “fair day’s work”. No cheating on Mr. Sunshine. No, sir-ree! Daddy and Mama were a team! And we all

had to pull our weight, be it a cotton sack, hoe, or milking cows, feeding hogs or chickens. The persimmon and peach switches were good sources of motivation to produce “good work”.

Some of Mama’s chores included: birthing, nursing and caring for seven children from 1-3 years apart. A little arithmetic indicates that for 20+ years there was an infant or toddler to be nursed, diapered and attended! The early fire in the wood stove was needed to heat water for coffee, to cook biscuits (large pans of them), fry ham and eggs. More hot water was needed to wash and rinse dishes. (Three times a day)! Drinking water had to be pumped, from a hard-to-prime pump outside. Cows were milked and fed, along with other animals. Corn was shucked and shelled for the chickens. Eggs were gathered. Rainwater from barrels standing in the drip of the tin-topped barn was used to fill the wash pot for the weekly washing.

Building a fire to heat the wash-water, using home-made lye soap and bluing, were all part of the process of ‘gitting the clothes clean’. The barnyard fence made for a good clothesline. Now the “second” rinse water was usually set in the sunshine for late evening baths. “Waste not”! And who was doing

this, or seeing that it got done? Yep! Mama or Granny Crider! (The year I was born, Grandpa Crider died; Granny Crider came to live with us. My parents ‘put her to work as soon as she checked in.’)

Wood stacked by the kitchen stove was a daily affair. In the winter, the fireplace wood was also needed to “keep the fire alive”. The old cast irons used for pressing clothes were on the cook stove or hearth for easy use. In the winter, the warm irons (or brick) were wrapped in towels and placed in the bed to warm the cold feet of kids getting home late from basketball games. Mama was on the job!

My sisters helped with many inside chores along the way while the boys pulled barnyard duty, giving Mama some relief. Hog-killing time meant overtime for sure! Many of the demanding tasks that go with this territory were “assigned” to Mama and Granny. They were always there pushing and shoving, doing their part. That garden seemed like a farm in itself! It seemed like acres to plant, hoe and pick. They were in charge here too. And work it was! Did you ever “stick” English peas, butter beans, green beans, or tomatoes? She was the engineer and consultant in charge, seeing the job was done right. My



Bill Crider

Mama!

Cooking for a family of ten, including Granny, was a full time job in itself. Now her cooking was not the greatest, but remember I said she was not a Proverb 31 model! But to stick to this routine daily for 50 + years should earn Mama some kind of heavenly reward. I think it did! Granny was there to assist, work behind the scenes and help with clean-up duties.

Mama was always so proud to see us in school activities. All the Crider kids played basketball, so she had many opportunities to see “us shine”. There were school plays and other events too. I don’t remember Daddy attending many, but Mama was usually there if she could be. She was so proud when I graduated from college.(the first one to ever achieve this honor.) My parents had struggled to make it possible and I knew it! (And there was no student loan to repay or ask it to be forgiven). Mama was able to attend and sit near the front. Proud Mama! Proud me as well!

Time passed and the children moved away. One day a sister from Florida was visiting “home”. Mama just “collapsed in her chair”, suffering a massive heart attack. Two days later she was gone. At rest now! No more heavy labor and long days of toil for her. No more sacrifices to make. Just eternal rest!

As years pass, I think of Mama, and ask myself, “How did she do it all; Day after day?” That is just

what Mamas do, I decided! They have their job and they “just do it”. Even today, mothers have hectic schedules and responsibilities. Maybe a little different now than it was in Mama’s day! But today, mothers work full time, shop for dinner, cook and serve it, clean house, help with homework, get the kids to bed and then, maybe have a few minutes for their husbands, attend to personal needs and then off to bed so tomorrow’s schedule can be honored. Oh, did I mention washing, making beds, cleaning bathrooms, picking up after everyone, etc? Remember that ole saying about “a man’s work is from sun to sun, but...?” It really is true. Bet every Mama knew it was!

We will always need our Mamas. Her spirit will always be around! That loving touch, soft voice of encouragement and a swift hand of correction when Proverbs 13: 24 needs to be applied. For those whose mother is no longer around....may God bless you with sweet memories? For those whose mother is living..will you take time to do something special for them this Mother’s Day? For all those women who ‘mothered’ children even though they are not biological mothers, may you be blessed too! Happy Mother’s Day to every mother!

**BILL CRIDER IS CHAPLAIN OF MINDEN MEDICAL CENTER**

### THE UPWARD LOOK

#### God Instructs

*“I will instruct you and teach you in the way which you should go; I will counsel you with My eye upon you.” Psalm 32:8 NASB*



Max Hutto

Ultimately it is God who instructs, teaches, and counsels repentant sinners in His ways. It is God who forgives and cleanses us of our sins through the sacrificial and atoning death, burial, and resurrection of Jesus. It is God who guides us through His Word, the Bible. In the Bible we learn how to follow Jesus, how to walk in His righteousness

and love, and how to live each moment of every day in a way that honors and glorifies Him. It is God who watches over us and is the keeper and sustainer of our lives.

Lord God, teach me from Your Word how to live righteously and how to walk each step rejoicing, praising You, and basking in Your great mercy, grace, and love.

**MAX HUTTO IS A BAPTIST MINISTER AND A RESIDENT OF MINDEN. MORE INFORMATION CAN BE FOUND AT [WWW.UPWARDLOOK.ORG](http://WWW.UPWARDLOOK.ORG).**

### INSPIRATION

#### Working for the lord

Have you ever felt like your just getting by at work? Have you ever made the statement I’m just here to get paid? If you answered yes to either of those questions it may be time to invite God to work. Colossians 3:23-24 NIV says “Whatever you do, work at it with all your heart, as working for the Lord, not for human masters, since you know that you will receive an inheritance from the Lord as a reward. It is the Lord Christ you are serving.” We must remember that there is no small job. Every job and every interaction allows us to glorify God. We have to treat every day as a new op-



Bernard Harris

portunity to minister to those around us. As I end this article I would like to leave everyone with three points. Firstly, if we have a healthy and prosperous job God provided that job. Secondly, we should try to find something positive every day on the job even when it seems there is nothing positive. And lastly, the position you have is the position God gave you, and should enjoy and appreciate it until God moves you.

**BERNARD HARRIS III IS A HAUGHTON FIREMAN AND A LOCAL RESIDENT OF MINDEN**

Come

WORSHIP

How can we pray for you?

If you're in need of prayer, we can help you. Contact the FBC 24-Hour Prayer Ministry at 371-PRAY.

FIRST BAPTIST CHURCH  
301 Pennsylvania Avenue • Minden, LA



# CLASSIFIEDS

Classified line ads are published Tuesday, Wednesday and Friday in the Minden Press-Herald, Bossier Press-Tribune and online at [www.press.herald.com](http://www.press.herald.com)

Presbyterian Village of Homer is currently accepting applications for full-time and part-time Cook and Dietary Aid positions. Please contact Bernice Modisette at (318)927-6133.

# LEGALS

SHERIFF'S SALE

CLOSED LOOP FUND LP  
VS.  
INTEGRICO COMPOSITES OF LOUISIANA LLC  
In the Twenty-Sixth Judicial District Court of Webster Parish, Louisiana, No. 81873.  
By virtue of a WRIT OF FIFA issued out of the Twenty-Sixth Judicial District Court of Webster Parish, Louisiana, in the above styled and numbered suit and to me directed, I have seized and taken into my possession and will offer for sale at public auction to the last and highest bidder for cash WITHOUT the benefit of appraisalment and according to law at the principle front door of the Courthouse in the City of Minden, Webster Parish, Louisiana, on WEDNESDAY, May 14, 2025,  
During the legal sale hours, the following property, to wit:  
Finished Good Rail Ties owned by Integrico Composites of Louisiana, LLC. Located at 108 Inducio Way, Sarepta, LA 71071  
SOLD SUBJECT TO ANY SUPERIOR LIENS, MORTGAGES OR PRIVI-LEGES THERETO.  
Said property seized is that of the defendant and will be sold to satisfy a judgment rendered in our Honorable Court.  
JASON R. PARKER Sheriff & Ex-Officio Auctioneer  
Webster Parish, Louisiana  
Pam Brantley  
Pam Brantley - Deputy

May 7, 2025  
Minden Press Herald

SHERIFF'S SALE

FREEDOM MORTGAGE CORPORATION  
VS.  
KATHIE LOLLEY AKA KATHIE LEE DECKER LOLLEY  
In the Twenty-Sixth Judicial District Court of Webster Parish, Louisiana, No. 82083.  
By virtue of a WRIT OF SEIZURE AND SALE issued out of the Twenty-Sixth Judicial District Court of Webster Parish, Louisiana, in the above styled and numbered suit and to me directed, I have seized and taken into my possession and will offer for sale at public auction to the last and highest bidder for cash WITHOUT the benefit of appraisalment and according to law at the principle front door of the Courthouse in the City of Minden, Webster Parish, Louisiana, on WEDNESDAY, June 11, 2025,  
?  
During the legal sale hours, the following property, to wit:  
A 0.50 acre, more or less, tract of land located in the Southwest Quarter of the Northeast Quarter, Section 20, Township 18 North, Range 10 West, Doyline, Louisiana, more particularly described as follows:  
Begin at the Southeast corner of the Southwest Quarter of the Northeast Quarter, said Section 20, and run North 0 degrees 13 minutes 07 seconds East 132 feet; thence run North 89 degrees 11 minutes 28 seconds West 446.49 feet (Call West) to the point of beginning; thence continue North 89 degrees 11 minutes 28 seconds West 124.46 feet (Call West); thence run North 0 degrees 13 minutes 07 seconds East 175 feet; thence run South 89 degrees 11 minutes 28 seconds East 124.46 feet (Call East); thence run South 0 degrees 13 minutes 07 seconds West 175 feet to the point of begining.  
The above described property is shown as Tract No. 3, Plat of Partition Survey for Barbara Kinney, June 14, 1999, by Paul W. Culpepper; subject to restrictions, servitudes, rights-of-way and outstanding mineral rights of record affecting the property.  
That certain manufactured/mobile home situated on the above described property, being a 2001 Skyline Tanglewood, Serial No. 3053-0448N A/B, 28 x 52, which said manufactured home/mobile home was immobilized pursuant to Affidavit to Immobilize Mobile Home dated April 30, 2001 and filed for record as Instrument No. 444682 of the records of Webster Parish, Louisiana.  
SOLD SUBJECT TO ANY SUPERIOR LIENS, MORTGAGES OR PRIVI-LEGES THERETO.  
Said property seized is that of the defendant and will be sold to satisfy a judgment rendered in our Honorable Court.  
JASON R. PARKER Sheriff & Ex-Officio Auctioneer  
Webster Parish, Louisiana  
Pam Brantley  
Pam Brantley - Deputy

May 7, 2025  
June 4, 2025  
Minden Press Herald

SHERIFF'S SALE

LAKEVIEW LOAN SERVICE, LLC  
VS.  
CHRISTOPHER D ELKINS  
In the Twenty-Sixth Judicial District Court of Webster Parish, Louisiana, No. 81303.  
By virtue of a WRIT OF SEIZURE AND SALE issued out of the Twenty-Sixth Judicial District Court of Webster Parish, Louisiana, in the above styled and numbered suit and to me directed, I have seized and taken into my possession and will offer for sale at public auction to the last and highest bidder for cash WITH the benefit of appraisalment and according to law at the principle front door of the Courthouse in the City of Minden, Webster Parish, Louisiana, on WEDNESDAY, June 11, 2025,  
During the legal sale hours, the following property, to wit:  
A 2.25 acre, more or less, tract of land located in the Northwest Quarter of the Southwest Quarter, (NW/4 SW/4), Section 14, Township 19 North, Range 10 West, Webster Parish, Louisiana, more particularly described as follows:  
Begin at a found sucker rod located at the Northwest Corner of the Southwest Quarter of the Northwest Quarter said Section 14; thence run South 01 degrees 40 minutes 14 seconds East for a distance of 1380.10 feet to a set 3/4 inch iron rod with T-Post Guard; thence run North 89 degrees 49 minutes 38 seconds East for a distance of 658.02 feet to a set 3/4 inch iron rod for the Point of Beginning; thence run North 89 degrees 49 minutes 38 seconds East for a distance of 125.30 feet to a set 3/4 inch iron rod; thence run South for a distance of 764.04 feet to a set 3/4 inch iron rod located on the centerline of Dixon Road, with the next 6 calls running along said centerline; thence run North 76 degrees 17 minutes 20 seconds West for a distance of 3.38 feet to a set 3/4 inch iron rod; thence run South 76 degrees 03 minutes 27 seconds West for a distance of 49.49 feet to a set 3/4 inch iron rod; thence run South 67 degrees 21 minutes 53 seconds West for a distance of 80.15 feet to 0 set 3/4 inch iron rod; thence run North for a distance of 805.64 feet to the Point of Beginning; subject to restrictions, servitudes, rights-of-way and outstanding mineral rights of record affecting the property.  
That certain manufactured/mobile home situated on the above described property, being a 2014 Fleetwood Weston, Model No. 240WE32524W, Serial No.FLE240TX14-34789A/B, which said manufactured home/mobile home was immobilized pursuant to Affidavit to Immobilize Mobile Home SOLD SUBJECT TO ANY SUPERIOR LIENS, MORTGAGES OR PRIVI-LEGES THERETO.  
Said property seized is that of the defendant and will be sold to satisfy a judgment rendered in our Honorable Court.  
JASON R. PARKER Sheriff & Ex-Officio Auctioneer  
Webster Parish, Louisiana  
Pam Breathley  
Pam Brantley - Deputy

May 7, 2025  
June 4, 2025  
Minden Press Herald

SHERIFF'S SALE

HOME FEDERAL BANK  
VS.  
BHB RENTALS LLC, AND PHUOC V BUI  
AND HUYEN T BUI  
In the Twenty-Sixth Judicial District Court of Webster Parish, Louisiana, No. CV81953.  
By virtue of a WRIT OF SEIZURE AND SALE issued out of the Twenty-Sixth Judicial District Court of Webster Parish, Louisiana, in the above styled and numbered suit and to me directed, I have seized and taken into my possession and will offer for sale at public auction to the last and highest bidder for cash WITH the benefit of appraisalment and according to law at the principle front door of the Courthouse in the City of Minden, Webster Parish, Louisiana, on WEDNESDAY, June 11, 2025,  
During the legal sale hours, the following property, to wit:  
\*\*\*PLEASE SEE ATTACHED PROPERTY DESCRIPTION\*\*\*  
SOLD SUBJECT TO ANY SUPERIOR LIENS, MORTGAGES OR PRIVI-LEGES THERETO.  
Said property seized is that of the defendant and will be sold to satisfy a judgment rendered in our Honorable Court.  
JASON R. PARKER Sheriff & Ex-Officio Auctioneer  
Webster Parish, Louisiana  
Pam Brantley  
Pam Brantley - Deputy  
Tract 1:  
Begin at point where the East right-of-way line of Louisiana Highway No. 7 intersects the South line of Southwest Quarter of Northeast Quarter (SW/4 of NE/4), Section 16, Township 18 North, Range 9 West, Webster Parish, Louisiana; thence run in a Northerly direction along the East right-of-way line of said highway to a point where Highway No. 7 Intersects the South line of Webster Parish Road No. 19-A, THE POINT OF BEGINNING of the property herein being described; thence run East along the South line of Webster Parish Road No. 19-A 290 feet; thence run in a Southerly direction parallel to Highway No. & a distance of 210 feet; thence run West and parallel with the South line of Webster Parish Road No. 19-A a distance of 290 feet to the East right of way line of Highway No. 7; thence run in a Northerly direction along the East Right of way line of Highway No. 7 a distance of 210 feet to the POINT OF BEGINNING, together with all improvements thereon and all rights thereto belonging.  
The municipal address of the above described property is 595 North Main Street, Sibley, Louisiana, 71073.  
Tract 2:  
Begin at the point where the East right of way line of Louisiana Highway No. 7 intersects the South line of Southwest Quarter of Northeast Quarter (SW/4 of NE/4), Section 16, Township 18 North, Range 9 West, Webster Parish, Louisiana; thence run in a Northerly direction along the East right of way

Public Notice

line of said highway to a point where Highway No 7 intersects the South Line of Webster Parish Road No. 19-A, thence run East along the South line of Webster Parish Road No. 19-A 290 feet, the POINT OF BEGINNING OF THE PROPERTY herein being described; thence continue East along the South line of Webster Parish Road No. 19-A 130 feet; thence run in a Southerly direction parallel to Highway No. 7 a distance of 210 feet; thence run West and parallel with the South line of Webster Parish Road No. 19-A a distance of 130 feet; thence run in a Northerly direction parallel to Highway No. 7 a distance of 210 feet to the POINT OF BEGINNING, together with all Improvements located thereon and all rights thereto belonging. The municipal address of the above described property is 102 North East 5th Avenue, Sibley, Louisiana 71073.  
LESS AND EXCEPT  
Begin at a point where the East right of way line of Louisiana Highway No. 371 (formerly La Highway No. 7) Intersects the South line of the Southwest Quarter of the Northeast Quarter (SW/4 of NE/4), Section 16, Township 18 North, Range 9 West, Webster Parish, Louisiana; thence run in a Northerly direction along the East right of way line of said Highway to a point where Highway No. 371 intersects the South line of the NE 5th Avenue (formerly Webster Parish Road No. 19-A); thence run East along the South line of the NE 5th Avenue 330 feet to the POINT OF BEGINNING of the tract herein descried; thence continue East along the South line of the NE 5th Avenue 110 feet; thence run in a Southerly direction parallel to Highway No. 371 a distance of 210 feet; thence run West parallel with the South line of NE 5th Avenue a distance of 110 feet; thence run in a Northerly direction parallel to Highway No. 371 a distance of 210 feet to the POINT OF BEGINNING, together with all improvements thereon and all rights thereto belonging, net excepted herein. The municipal address of the property being conveyed herein is 135 NE 5th Avenue, Sibley, Louisiana, 71075.

May 7, 2025  
June 4, 2025  
Minden Press Herald

Public Notice

Notice of Public Hearing Meeting  
The Housing Authority of the Town of Cotton Valley will hold a Public Hearing at 5:00 P.M. On Thursday, June 19, 2025, at 437 Crow Street Cotton Valley, LA 71018 to receive comments on the 2025-2029 5 Year PHA Plan, 2025 Annual PHA Plan and the 2025 - 2029 5 Year Action Plan for preparation of the 2025 CFP Annual Statement Capital Fund Program.  
All documents are on display and available for viewing at the office of the Cotton Valley Housing Authority located at 437 Crow Street, Cotton Valley, LA 71018, Monday through Thursday, between the hours of 9:00 A.M. and 2:00 P.M.

May 7, 2025  
Minden Press Herald

Whereabouts

LEGAL NOTICE: Rocket Mortgage, LLC f/k/a Quicken Loans, LLC v. Debbie Pearson a/k/a Debbie Pearson Green and JAMES GREEN; Docket No. 82023; 26th Judicial District Court, Webster Parish, Louisiana. JAMES GREEN has been named as a defendant in the above-captioned suit. Anyone knowing the whereabouts of his succession representative or any relatives is asked to contact Attorney Taunton Melville at (318) 200-0897 or TMeIville@MelvilleLawFirm.com.

May 7, 14, 2025  
Minden Press Herald

Whereabouts

LEGAL NOTICE  
Anyone knowing the whereabouts of THOMAS E. SUTTON, whose last known residence was Haywood County, North Carolina, is asked to contact Jack W. Slaid, Attorney- at-Law at (318) 382-1177 or at 219 Main Street, Minden, LA 71055.

May 7, 14, 2025  
Minden Press Herald

Whereabouts

LEGAL NOTICE  
Any person with knowledge or an interest in the estate of MARY LOUISE GLASS SUTTON is asked to contact Jack W. Slaid, Attorney- at-Law at (318) 382-1177 or at 219 Main Street, Minden, LA 71055.

May 7, 14, 2025  
Minden Press Herald

Whereabouts

LEGAL NOTICE  
Any person with knowledge or an interest in the estate of DELIA BOWEN STEGER is asked to contact Jack W. Slaid, Attorney- at-Law at (318) 382-1177 or at 219 Main Street, Minden, LA 71055.

May 7, 14, 2025  
Minden Press Herald

Whereabouts

LEGAL NOTICE  
Anyone knowing the whereabouts of DANIEL I. SUTTON, JR. or an interest in the estate of DANIEL I. SUTTON, JR. is asked to contact Jack W. Slaid, Attorney- at-Law at (318) 382-1177 or at 219 Main Street, Minden, LA 71055.

May 7, 14, 2025  
Minden Press Herald

Minutes

Village of Doyline Council Meeting  
February 3, 2025  
Meeting was called to Order by Alderman Steve Bridwell as Mayor Gates was absent. Present were Rachel Muniz and Jackie Daniels. Clerk Myra Kilburn, Police Chief Robbie Hayden.  
Invocation was offered by Jackie Daniels and the Pledge of Allegiance was led by Steven Bridwell.  
Motion was made by Rachel Muniz, seconded by Jackie Daniels to accept the January 2025 Minutes as offered. Motion carried.  
Motion was made by Rachel Muniz, seconded by Jackie Daniels to accept the January 2025 Financials as offered. Motion carried.  
Adam Lee, Webster Parish Police Jurymen discussed the approval of the donation of the property currently owned by the Police Jury to the Village of Doyline, located at the end of College Street. The purpose of this property for the Village is to be used as a Maintenance Barn. There was a brief discussion regarding a current water well located on this property and that the lease would be coming up soon for renewal. It was discussed that Mr. McKay, the adjacent property owner would need a Right of Way since the black top ends there in a dirt road to his property. The matter will be investigated and all efforts will be made to accommodate the adjacent land owners wherever possible.  
As there was no further business, Rachel Muniz made motion to Adjourn the meeting, seconded by Jackie Daniels. Motion carried.  
Myra Kilburn  
Crystal Gates

May 7, 2025  
Minden Press Herald

Public Notice

DOCKET NO. 82041  
26TH JUDICIAL DISTRICT COURT  
WEBSTER PARISH, LOUISIANA  
410 MAIN STREET, MINDEN, LOUISIANA  
MARK PHILIP MCINNIS, ET AL  
VERSUS  
THOMAS BOWEN, ET AL  
JUDICIAL NOTICE  
Notice is given to F and G Investments, LLP; Delia Bowen Steger or the estate, heirs and legatees of Delia Bowen Steger if she is deceased; the estate, heirs or legatees of Mary Louise Glass Sutton; Thomas E. Sutton; Daniel I. Sutton, Jr. or the estate, heirs and legatees of Daniel I. Sutton, Jr. if he is deceased; the absent defendants in the proceeding entitled "Mark Philip McInnis, et al versus Thomas Bowen, et al," No. 82041 of the docket of the 26th Judicial District Court for the Parish of Webster in Minden, Louisiana, to those named as well as anyone else asserting an ownership interest in the property described below, that the plaintiffs in this proceeding are seeking to have the property partitioned by licitation, and the absentee defendants have fifteen days from the date of the publication of this notice, to answer the plaintiffs' petition. The property sought to be partitioned by licitation in the proceeding mentioned above is situated in Webster Parish and is described as follows:  
A tract containing 5.79 acres, more or less, located in Section 13, Township 19 North, Range 9 West, Webster Parish, Louisiana (Parcel #102682), more particularly described as follows: Northeast Quarter of Northwest Quarter (NE/4 of NW/4), Section 13, Township 19 North, Range 9 West, Webster Parish, Louisiana, less West Half (W/2) taken into city limits of Minden (Parcel #111392), less approximately 14.21 acres sold; and  
A tract containing 0.48 acre, more or less, located in Section 13, Township 19 North, Range 9 West, Webster Parish, Louisiana (Parcel #111392), more particularly described as follows: West Half of Northeast Quarter of Northwest Quarter (W/2 of NE/4 of NW/4), Section 13, Township 19 North, Range 9 West, Webster Parish, Louisiana, less approximately 19.52 acres sold.

May 7, 2025  
Minden Press Herald

Public Notice

Town of Cotton Valley – Public Notice of Property for Sale  
The Town of Cotton Valley is offering the following surplus properties for sale:  
  
256 Main Street  
Parcel #129079  
Lot #7, Block A  
Building and Land (0.11 acres)  
Price: \$2,500.00  
  
213 Railroad Avenue  
Parcel #129072 and #131844  
Lot size 50' x 130' and Lot size 61' x 130'  
Building and Land (0.51 acres and 0.21 acres)  
Price: \$1,000.00  
  
755 Crow Street  
Parcel #121590  
Lot size 75' x 150' (0.25 acres)  
Price: Included below  
  
773 Crow Street  
Parcel #121417  
Lot size 125' x 150' (0.44 acres)  
Price: \$2,500.00 (for both Crow Street parcels combined)  
  
Interested parties may contact Cotton Valley Town Hall at (318) 832-4283 or visit 478 Resident Street during regular business hours for additional information, to view property details, or to make an offer.  
All properties are sold as-is. The Town of Cotton Valley reserves the right to reject any and all offers.

May 7, 2025  
Minden Press Herald

Liquor Permit

We are applying to the Commission on Alcoholic Beverage Control of the State of Louisiana for a permit to sell beverages of low alcoholic content at retail in the Parish of Webster at the following address:  
Name of Corporation: WBF Investments 3 LLC  
D/B/A: EZ Fuel Stop  
Address: 982 Hwy 531, Minden, LA 71055  
Title: Member  
Printed Name: Mustak Sunesara  
Phone # (832)859-5353

May 7, 14, 2025  
Minden Press Herald

Liquor Permit

We are applying to the Commission on Alcoholic Beverage Control of the State of Louisiana for a permit to sell beverages of low alcoholic content at retail in the Parish of Webster at the following address:  
Name of Corporation: WBF Investments 2 LLC  
D/B/A: EZ Fuel Stop  
Address: 800 Lewisville Rd, Minden, LA 71055  
Title: Member  
Printed Name: Mustak Sunesara  
Phone # (832)859-5353

May 7, 14, 2025  
Minden Press Herald

Liquor Permit

We are applying to the Commission on Alcoholic Beverage Control of the State of Louisiana for a permit to sell beverages of low alcoholic content at retail in the Parish of Webster at the following address:  
Name of Corporation: WBF Investments 4 LLC  
D/B/A: EZ Fuel Stop  
Address: 1403 Sibley Rd, Minden, LA 71055  
Title: Member  
Printed Name: Mustak Sunesara  
Phone # (832)859-5353

May 7, 14, 2025  
Minden Press Herald

ADVERTISEMENT FOR BIDS

Sealed proposals addressed to the Town of Sibley for the construction of Street Improvements (Phase 1) in Webster Parish, Louisiana for the Town of Sibley, hereinafter called "Owner", will be received at the Sibley Town Hall, 345 North Main St. Street, Sibley, LA 71073 on  
  
Tuesday, June 3rd, 2025 @  
  
10:00 a.m. CST  
  
and then publicly opened and read aloud. Any bid received after closing will be returned unopened.  
  
The Contract Documents (including Construction Drawings and Specifications) were prepared by BALAR Associates, Inc., Consulting Engineers, 631 Milam Street, Suite 300, Shreveport, Louisiana, 71101, and may be examined without charge at their office. A full set of Contract Documents (PDF electronic format on CD or USB Drive) may be obtained upon payment of a \$ 25.00 deposit. A PDF electronic format of the Contract Documents may be emailed upon request at no charge.  
  
A cashier's check, certified check, or acceptable Bidder's Bond payable to the Owner in an amount not less than five percent (5%) of the largest possible total for the bid submitted including consideration of alternates, must accompany each bid as a guarantee that, if awarded the contract, the Bidder will promptly enter into a Contract and execute such bonds as may be required. Sureties used for obtaining bonds must appear as acceptable in the Department of Treasury Circular No. 570.  
  
To bid and perform Work covered by these documents, the Contractor must be licensed under Classification II – Highway, Street and Bridge Construction.  
  
The Contractor shall begin mobilization and procurement of materials within ten (10) days of the receipt of the Notice to Proceed.  
  
The Owner reserves the right to reject all bids. Such actions will be in accordance with Title 38 of the Louisiana Revised Statutes.  
  
All bids may be held forty-five (45) days.  
  
Hon. Robert Smart, Mayor  
Town of Sibley

April 30, 2024  
May 7, 14, 2025  
Minden Press Herald

ADVERTISEMENT FOR BIDS

Sealed proposals addressed to the Town of Sibley for the construction of Street Improvements (Phase 2) in Webster Parish, Louisiana for the Town of Sibley, hereinafter called "Owner", will be received at the Sibley Town Hall, 345 North Main St. Street, Sibley, LA 71073 on  
  
Tuesday, June 3rd, 2025 @ 10:30 a.m.  
  
CST  
  
and then publicly opened and read aloud. Any bid received after closing will be returned unopened.  
  
The Contract Documents (including Construction Drawings and Specifications) were prepared by BALAR Associates, Inc., Consulting Engineers, 631 Milam Street, Suite 300, Shreveport, Louisiana, 71101, and may be examined without charge at their office. A full set of Contract Documents (PDF electronic format on CD or USB Drive) may be obtained upon payment of a \$ 25.00 deposit. A PDF electronic format of the Contract Documents may be emailed upon request at no charge.  
  
A cashier's check, certified check, or acceptable Bidder's Bond payable to the Owner in an amount not less than five percent (5%) of the largest possible total for the bid submitted including consideration of alternates, must accompany each bid as a guarantee that, if awarded the contract, the Bidder will promptly enter into a Contract and execute such bonds as may be required. Sureties used for obtaining bonds must appear as acceptable in the Department of Treasury Circular No. 570.  
  
To bid and perform Work covered by these documents, the Contractor must be licensed under Classification II – Highway, Street and Bridge Construction.  
  
The Contractor shall begin mobilization and procurement of materials within ten (10) days of the receipt of the Notice to Proceed.  
  
The Owner reserves the right to reject all bids. Such actions will be in accordance with Title 38 of the Louisiana Revised Statutes.  
  
All bids may be held forty-five (45) days.  
  
Hon. Robert Smart, Mayor  
Town of Sibley

April 30, 2025  
May 7, 14, 2025  
Minden Press Herald

Whereabouts

Anyone knowing the whereabouts of the following: BISHOP RICK COSBY OR PAMELA COSBY, please contact Christopher M. Sylvia, Attorney at Law, Post Office Box 186, Many, Louisiana 71449, (318) 431-5009.

April 30, 2025  
May 7, 2025  
Minden Press Herald



**Public Notice**

EXHIBIT "B"

OFFICE OF THE TAX COLLECTOR-MINDEN, COTTON VALLEY, SAREPTA, DOYLINE, CULLEN AND WEBSTER PARISH, LOUISIANA  
MAY 7, 2025

By virtue of the authority vested in me by the Constitution and Laws of the State of Louisiana, I will sell at the principal front door of the courthouse in which the Civil District Court of Webster Parish, Louisiana is held at 10AM and within the legal hours for Judicial Sales, beginning on Wednesday May 14, 2025 and continuing on each succeeding day until said sales are completed, all immovable property on which taxes are due the Parish of Webster and the State of Louisiana to enforce the collection of taxes assessed for the year 2024, with interest to be added at the rate of 7% per annum for the first 90 days and at the rate of 1% per month thereafter until paid on the taxes due for the said year 2024 and all costs.

INTEREST AND COST WILL BE ADDED TO EACH INDIVIDUAL ASSESSMENT.

On said day of sale I will sell such portion of said property as each tax debtor shall point out, and in case the debtor shall not point out sufficient property, I will at once and without delay sell the least specific amount for taxes, interest and cost due by said debtor. The sale will be without appraisalment, for cash in legal tender money of the United States. The immovable property sold shall be redeemable at any given time for the space of three (3) years by paying the tax sale amount, including interest and cost and 5% penalty and 1% per month interest thereon. Movable property is also listed for collection of outstanding taxes.

NOTICE

TO THE MORTGAGE CREDITORS OF THE PARISH OF WEBSTER, State of Louisiana:

In conformity with section 63 of act 85 of 1888 and the laws as provided in such cases, notice is hereby given to all parties holding mortgages upon real estate in the Parish of Webster, State of Louisiana, on which taxes for the year 2024 have not been paid, that I will sell at the principal front door of the Courthouse on Wednesday, May 14, 2025 beginning at 10 AM said pieces of property and that pieces of property so delinquent are now being advertised in this paper in conformity with law preparatory to such sale. The attention of mortgage creditors is especially called to this advertisement of tax sale and they are hereby warned to take such steps prior to sale as may be necessary to protect their rights.

The name of each said taxpayer, the amount of taxes due on the assessment of said year and the immovable property assessed to each to be offered for sale is as follows, to wit:

Tax information and online payments are available @ www.webstersheriff.org until May 13, 2025.

JASON R. PARKER  
SHERIFF & EX-OFFICIO TAX COLLECTOR  
WEBSTER PARISH, LOUISIANA

CHRISTINA MOSLEY

Tax Collector

May 7, 2025  
Minden Press Herald

Tax Sale		
49913 WARD 1-MN 112698 3 C'S PROPERTIES & INVESTMENT, LLC 1204 SIBLEY RD MINDEN, LA 71055-0000 TAXES OWED ARE \$343.03 WITH INTEREST & COST TO BE ADDED. LOT 70 X 105 FT. IN NW/4 OF SE/4 SEC. 27-19-9	#6 - 8 ON THE WEST), LESS THAT PORTION TO DEPT. OF HWYS.	INTEREST & COST TO BE ADDED. LOT #8, BLK. '1', C. W. THOMPSON SUBDIV.
31614 WARD 1 100609 3 C'S PROPERTIES & INVESTMENTS, LLC 1204 SIBLEY RD MINDEN, LA 71055 TAXES OWED ARE \$660.69 WITH INTEREST & COST TO BE ADDED. LOT 34.45 X 39.26 X 32.9 X 80.74 X 100 X 70 X 220 FT. IN NW/4 OF NE/4 SEC. 3-18-9	19004 WARD 1-MN 111156 3 C'S PROPERTIES INVESTMENTS 708 WOODS ST MINDEN, LA 71055-0000 TAXES OWED ARE \$232.96 WITH INTEREST & COST TO BE ADDED. LOT 100 X 140 FT. IN NE/4 OF NW/4 SEC. 1-18-9 & LOT 100 X 140 FT. IN NE/4 OF NW/4 SEC. 1-18-9 (ADJ.)	13331 WARD 1-MN 129478 ANDERSON, DAVE C/O BEN ANDERSON 1607 BENNINGTON CT MINDEN, LA 71055-0000 OTHER OWNERS: ANDERSON, BENJAMIN ANDERSON, BOBBIE ANDERSON, LOUIE TAXES OWED ARE \$106.80 WITH INTEREST & COST TO BE ADDED. LOTS #1 & 2, BLK. '6', SOUTHSIDE ADDN., LESS PART SOLD TO DEPT. OF HWY., & STRIP 10 X 50 FT. (FORMERLY AN ALLEY, ABANDONED ORDIN #1048)
39497 WARD 1-MN 112883 3 C'S PROPERTIES & INVESTMENTS, LLC 1204 SIBLEY RD MINDEN, LA 71055-0000 TAXES OWED ARE \$1485.38 WITH INTEREST & COST TO BE ADDED. LOT #3, COUNTRY CLUB ESTATES SUBDIV. UNIT #2	47429 WARD 2-CV 121190 ALEXANDER, CHARLIE P O BOX 640 COTTON VALLEY, LA 71018-0000 OTHER OWNERS: ALEXANDER, ROSE MARIE TAXES OWED ARE \$19.58 WITH INTEREST & COST TO BE ADDED. LOT #67, PREMIER PARK SUBDIV. IN W/2 OF SE/4 SEC. 17-21-10 & LOT 10 X 15.62 X 12 FT. OUT OF LOT #63, PREMIER PARK SUBDIV. (ADJ.)	32257 WARD 1 103142 ANDERSON, TAMMY DIANNE 1006 CENTER ST MINDEN, LA 71055-0000 OTHER OWNERS: SMITH, BRETT JOSEPH TAXES OWED ARE \$1031.17 WITH INTEREST & COST TO BE ADDED. 2 ACRES - TRACT 208 X 416 FT. IN NE/4 OF NW/4 SEC. 31-19-8
39590 WARD 1-MN 111089 3 C'S PROPERTIES & INVESTMENTS, LLC 1204 SIBLEY RD MINDEN, LA 71055-0000 TAXES OWED ARE \$488.64 WITH INTEREST & COST TO BE ADDED. LOT #26, DICKENS SUBDIV. UNIT #4	59368 WARD 2-SH 123047 ALLEN, JERRY WAYNE P O BOX 1179 MAGNOLIA, AR 71754-0000 TAXES OWED ARE \$1533.32 WITH INTEREST & COST TO BE ADDED. LOT 100 X 113.97 X 50 X 50 X 89.57 FT. IN SW/4 OF SW/4 SEC. 12-23-11	48282 WARD 2-SH 124137 ANN BUSINESS INVESTMENTS, INC 1010 NORTH ARKAN-SAS ST SPRINGHILL, LA 71075-0000 TAXES OWED ARE \$2844.15 WITH INTEREST & COST TO BE ADDED. LOT 90 X 120 FT. OUT OF GOV'T. LOT #2 IN SW/4 OF NE/4 SEC. 2-23-11
52578 WARD 1-MN 114285 3 C'S PROPERTIES & INVESTMENTS, LLC 1204 SIBLEY RD MINDEN, LA 71055-0000 TAXES OWED ARE \$892.10 WITH INTEREST & COST TO BE ADDED. LOTS #82 & 83, BABB ADDN.	26218 WARD 2 119775 ALLEN, LARRY RAY 409 PERCY BURNS RD SPRINGHILL, LA 71075-0000 TAXES OWED ARE \$155.44 WITH INTEREST & COST TO BE ADDED. 6.50 ACRES - TRACT 1059 X 507 X 210 X 590 X 195 FT. IN S/2 OF NW/4 OF SE/4 & IN SW/4 OF SE/4 SEC. 18-23-10	43879 WARD 1-MN 109692 AZALEA TERRACE APARTMENTS A LIMITED PARTNER-SHIP P O BOX 1037 MINDEN, LA 71058 TAXES OWED ARE \$8636.08 WITH INTEREST & COST TO BE ADDED. 2.82 ACRES - TRACT 268.67 X 104.80 X 368.50 X 46.41 X 178.64 FT. IN NW/4 OF SW/4 SEC. 14 & IN NE/4 OF SE/4 SEC. 15-19-9
53324 WARD 1-MN 114152 3 C'S PROPERTIES & INVESTMENTS, LLC 1204 SIBLEY RD MINDEN, LA 71055 TAXES OWED ARE \$469.23 WITH INTEREST & COST TO BE ADDED. LOT #22 RE-SUBDIV. OF EAST HTS. SUBDIV.	31347 WARD 1 106158 ALLUMS, PEGGY 699 GORTON RD DOYLINE, LA 71023 TAXES OWED ARE \$649.12 WITH INTEREST & COST TO BE ADDED. LOT #261 PALMETTO BEACH ESTATES	43791 WARD 1-MN 101647 BAILEY, DONNA RAYBURN 203 S. ROOSEVELT ST. SPRINGHILL, LA 71075 OTHER OWNERS: BAILEY, LAMAR TAXES OWED ARE \$26.92 WITH INTEREST & COST TO BE ADDED. LOT 130 X 272 FT. IN NE/4 OF SE/4 SEC. 18-23-10
60346 WARD 1 108564 3 C'S PROPERTIES & INVESTMENTS, LLC 1204 SIBLEY RD MINDEN, LA 71055-0000 TAXES OWED ARE \$618.24 WITH INTEREST & COST TO BE ADDED. LOT 70 X 220 FT. IN NW/4 OF NE/4 SEC. 3-18-9	43512 WARD 1 100123 ANDERSON, CHARLES WILLIAM P O BOX 793 DOYLINE, LA 71023-0000 OTHER OWNERS: ANDERSON, HEATHER E TAXES OWED ARE \$55.34 WITH INTEREST & COST TO BE ADDED. 3.85 ACRES - TRACT 218.15 X 799.59 X 200 X 800.6 FT. IN NE/4 OF NW/4 & IN GOV'T. LOT #2 (FRAC. SE/4 OF NW/4) SEC. 14-17-10 & LOT #6, LAKESIDE MEADOWS, UNIT #1 IN NE/4 OF NW/4 SEC. 14-17-10	55010 WARD 2 116417 BAILEY, DONNA RAYBURN 203 S. ROOSEVELT ST. SPRINGHILL, LA 71075 OTHER OWNERS: BAILEY, LAMAR TAXES OWED ARE \$26.92 WITH INTEREST & COST TO BE ADDED. LOT 130 X 272 FT. IN NE/4 OF SE/4 SEC. 18-23-10
30922 WARD 1-MN 128819 3 C'S PROPERTIES AND INVESTMENTS, LLC 1204 SIBLEY RD MINDEN, LA 71055-0000 TAXES OWED ARE \$1873.70 WITH INTEREST & COST TO BE ADDED. LOTS #1, 2, 3, 4, 5, 6, 7 & 8, BLK. 'N', J. M. BROWN ADDN. & STRIP 10 X 250 FT. ADJ. IN NW/4 OF SW/4 OF SW/4 SEC. 27-19-9 (FORMERLY AN ALLEY ADJ. LOTS #1 - 5 ON THE EAST) & STRIP 10 X 150 FT. ADJ. IN NW/4 OF SW/4 SEC. 27-19-9 (FORMERLY AN ALLEY ADJ. LOTS	45951 WARD 1-DL 108841 ANDERSON, CHARLES WILLIAM GEEVES, III P O BOX 793 DOYLINE, LA 71023-0000 OTHER OWNERS: ANDERSON, PATRICIA ANN TAXES OWED ARE \$14.10 WITH	29217 WARD 2-SH 123088 BAILEY, JESSIE LAMAR (ESTATE) 703 DENNIS STREET SPRINGHILL, LA 71075

OTHER OWNERS: BAILEY, DONNA SUE RAYBURN  
RUTH  
TAXES OWED ARE \$446.20 WITH INTEREST & COST TO BE ADDED.  
LOT #1, BLK. 'D', WHITEWAY SUBDIV.

30213 WARD 2 116422  
BAILEY, R. W. ESTATE  
C/O CANDICE H. ROBINSON  
103 DICKERSON PARKWAY  
LAFAYETTE, LA 70501-0000  
OTHER OWNERS: STEWART, NICOLE LYNETTE  
TAXES OWED ARE \$20.33 WITH INTEREST & COST TO BE ADDED.  
7.31 ACRES - UND. 60% INT. IN & TO: UND. 12.17 AC. INT. IN & TO: ALL OF NW/4 OF SW/4 SEC. 28 LYING EAST OF MINDEN-LEWISVILLE RD., SE/4 OF NW/4 SEC. 28 & A STRIP 55 YDS. WIDE OFF NORTH SIDE OF NE/4 OF SW/4 SEC. 28-23-9, BEING 61 AC.

19937 WARD 1-MN 115336  
BAILEY, SEAN GREGORY  
714 SIMS ST  
MINDEN, LA 71055-0000  
TAXES OWED ARE \$32.02 WITH INTEREST & COST TO BE ADDED.  
LOT #17, DICKENS SUBDIV. UNIT #3

14009 WARD 1 100292  
BAKER, BLANCHE SANDERS  
1450 BALBOA ST  
SAN FRANCISCO, CA 94118-0000  
TAXES OWED ARE \$13.42 WITH INTEREST & COST TO BE ADDED.  
LOT 310 X 581 FT. IN NW/4 OF NW/4 SEC. 4-18-10, LESS 75 X 75 FT. SOLD, LESS 182 X 240 FT. SOLD, & LESS 92 X 107 X 17 X 75 X 75 X 32 FT. SOLD

13869 WARD 1-MN 110349  
BALLANTYNE, CHAN-DRA  
6512 TAPROCK DRIVE  
MCKINNEY, TX 75070-0000  
TAXES OWED ARE \$156.41 WITH INTEREST & COST TO BE ADDED.  
SOUTH 150 FT. OF LOT #1, DRAKE SUBDIV. #2

35351 WARD 1-MN 109804  
BARLOW, GRACIE WHITFIELD, EST  
C/O BELINDA R. HERRON  
912 WARREN STREET  
MINDEN, LA 71055  
TAXES OWED ARE \$179.05 WITH INTEREST & COST TO BE ADDED.  
LOT 26.98 X 100.13 X 27 X 101.09 FT. OUT OF LOT #7, MARIAH LEARY EST. PART. IN SE/4 OF NE/4 SEC. 27-19-9 (BEING LOT #4, SURVEY FOR JACK LEARY)

12141 WARD 1-DI 108665  
BEARD, RICHARD DALE  
P O BOX 668  
MINDEN, LA 71058  
TAXES OWED ARE \$210.47 WITH INTEREST & COST TO BE ADDED.  
52.49 ACRES - ALL OF THE SW/4 OF SW/4 SEC. 29-19-9 LYING SOUTH OF DIXIE-OVERLAND HWY., LESS 10 AC. PREV. SOLD & LESS 0.69 AC. , ALL THAT PART OF SE/4 OF SE/4 SEC. 30-19-9 LYING SOUTH OF DIXIE-OVERLAND HWY. & ALL THAT PART OF N/2 OF NE/4 SEC. 31-19-9 LYING SOUTH OF DIXIE-OVERLAND HWY. & EAST OF DOR-CHEAT BAYOU, LESS 0.35 AC. SOLD, LESS 1.33 AC., LESS 0.43 AC. SOLD, LESS 0.42 AC. SOLD, LESS 0.41 AC. SOLD, LESS 75 X 51.57 X 31.8 X 110.75 FT. (0.07 AC.) & LESS 26.28 AC. (ALL PROP. BEING MORE FULLY DESC. AS FOLLOWS: TRACT 420 X 1241.80 X 1153.81 X 177.43 X 274.32 X 177.95 X 405.10 X 231.20 X 58 X 158.82 X 145.63 X 60.55 X 173.30 X 167.70 X 119.95 X 105 X 188 X 122.35 X 197 X 172.30 X 133 X 347.0 FT. IN SECS. 29, 30 & 31-19-9, LESS AC. PREV. SOLD & LESS 26.28 AC.)

52522 WARD 2-CV 121575  
BGRH PROPERTIES  
168

168 PERCY BURNS RD  
SPRINGHILL, LA 71075-0000  
TAXES OWED ARE \$5.35 WITH INTEREST & COST TO BE ADDED.  
LOT #6, BLK. '13', MRS. EMMA CROW ADDN.

12855 WARD 2-SH 125309  
BGRH PROPERTIES, LLC  
170 SKIP ROAD  
COTTON VALLEY, LA 71018-0000  
TAXES OWED ARE \$199.63 WITH INTEREST & COST TO BE ADDED.  
LOT 45 X 100 FT. IN NE/4 OF NE/4 SEC. 14-23-11

55685 WARD 1-SI 115762  
BHB RENTALS, LLC  
15175 COUNTRY CLUB CIR  
MINDEN, LA 71055-0000  
TAXES OWED ARE \$1569.06 WITH INTEREST & COST TO BE ADDED.  
LOT 210 X 290 FT. IN SW/4 OF NE/4 SEC. 16-18-9 & LOT 130 X 210 FT. IN SW/4 OF NE/4 SEC. 16-18-9, LESS LOT 110 X 210 FT. SOLD

41282 WARD 2-SH 123170  
BLACKMAN, WILLIAM  
%MAGGIE BLANKS  
P O BOX 25055  
FORT WORTH, TX  
TAXES OWED ARE \$26.46 WITH INTEREST & COST TO BE ADDED.  
LOT 50 X 100 FT. IN SE/4 OF NE/4 SEC. 14-23-11

57156 WARD 2 116625  
BLAKE, JULIA AMANDA  
1007 HUNTERS CROSSING  
BOSSIER CITY, LA 71111-0000  
TAXES OWED ARE \$14.94 WITH INTEREST & COST TO BE ADDED.  
LOT 210 X 130 X 185 X 160 X 25 X 290 FT. IN NE/4 OF NE/4 SEC. 30-23-10

33980 WARD 2-CL 121780  
BLAKE, JULIE AMANDA  
P O BOX 52  
CULLEN, LA 71021-0052  
OTHER OWNERS: CHANDLER, MINNIE MAE EST  
TAXES OWED ARE \$31.76 WITH INTEREST & COST TO BE ADDED.  
LOT 210 X 210 FT. IN SE/4 OF SW/4 SEC. 19-23-10

43142 WARD 1-MN 112959  
BOSTON, BIANCA  
811 REBECCA ST  
MINDEN, LA 71055-0000  
TAXES OWED ARE \$6.01 WITH INTEREST & COST TO BE ADDED.  
LOT 70 X 101.12 X 55 X 100 FT. IN NW/4 OF NW/4 SEC. 28-19-9

42100 WARD 1-MN 109986  
BOSTON, GENE EST  
C/O MARY BOSTON  
206 S RANDALL ST  
MINDEN, LA 71055-4020  
TAXES OWED ARE \$11.87 WITH INTEREST & COST TO BE ADDED.  
LOT 50 FT. ON RE-BECCA ST. X 162 FT. IN NW/4 OF NW/4 SEC. 28-19-9

32219 WARD 1 102090  
BRANCH REAL ESTATE HOLDINGS, LLC  
1905 HONEYTREE TRAIL  
HAUGHTON, LA 71037-0000  
TAXES OWED ARE \$499.15 WITH INTEREST & COST TO BE ADDED.  
LOTS #10 & 15, BISTINEAU TERRACE SUBDIV., UNIT #2

45004 WARD 1 132194  
BRASWELL, PAUL EGAN  
105 BENTREE CT  
HENDERSONVILLE, TN 37075-0000  
TAXES OWED ARE \$187.03 WITH INTEREST & COST TO BE ADDED.  
LOTS #14, 15 & 16, BARNETT SUBDIV., UNIT #1 IN GOV'T. LOT #5, SEC. 19-18-9

48407 WARD 1 132146  
BRASWELL, PAUL EGAN  
105 BENTREE CT  
HENDERSONVILLE, TN 37075-0000  
TAXES OWED ARE \$187.03 WITH INTEREST & COST TO BE ADDED.  
LOTS #17, 18 & 19, BARNETT SUBDIV., UNIT #1 IN GOV'T. LOT #5, SEC. 19-18-9

48563 WARD 2-SA 122631  
BREEDEN, DANNY JOE  
244 CAVE ST  
SAREPTA, LA 71071-0000  
TAXES OWED ARE \$81.41 WITH INTEREST & COST TO BE ADDED.  
1.43 ACRES - TRACT 179 X 411 FT. IN NE/4 OF NE/4 SEC. 22-11, LESS 0.26 AC. ASSESSED IN WARD 2-OUT

20341 WARD 1

100778 BROOKS, MAMIE LOU  
1687 FULLER RD  
MINDEN, LA 71055  
OTHER OWNERS: ANDERSON, FLORA BROOKS  
BROOKS, ALFRED RAY  
BROOKS, HERBERT ARTHUR, JR.  
BROOKS, MICHAEL COSBY, LINDA  
BROOKS  
DILLARD, SHELIA BROOKS  
TAXES OWED ARE \$62.18 WITH INTEREST & COST TO BE ADDED.  
3.23 ACRES - 5 AC. IN A SQUARE IN SW COR. OF NE/4 OF SW/4 SEC. 9-19-10, LESS 1.77 AC. PREV. SOLD

39279 WARD 2-CL 121759  
BROOKS, VIRGINIA MARTIN  
P O BOX 756  
CULLEN, LA 71021-0756  
TAXES OWED ARE \$223.78 WITH INTEREST & COST TO BE ADDED.  
LOT 75 X 125 FT. IN SW/4 OF NW/4 SEC. 19-23-10

55710 WARD 2-SH 125253  
BROWN, JOHN  
908 7TH STREET, SE  
SPRINGHILL, LA 71075-0000  
TAXES OWED ARE \$137.09 WITH INTEREST & COST TO BE ADDED.  
LOT #64, BLK. '6', SOUTHSIDE SUBDIV.

16455 WARD 2-SH 125228A  
BROWN, LEE CARTER  
206 ELMWOOD ST  
SPRINGHILL, LA 71075-0000  
TAXES OWED ARE \$418.49 WITH INTEREST & COST TO BE ADDED.  
LOT 80 X 110 X 60 X 140 FT. IN SW/4 OF NE/4 SEC. 11-23-11

18961 WARD 1-SI 115724  
BROWN, SAT LEE  
C/O GLORIA TIPPINS  
329 WEATHERTON ST  
SIBLEY, LA 71073  
TAXES OWED ARE \$26.68 WITH INTEREST & COST TO BE ADDED.  
LOT 30 X 100 FT. OUT OF LOT #7, WALLACE A. ATKERSON'S ADDN., SIBLEY IN SE/4 OF SE/4 SEC. 16-18-9

58613 WARD 2-SA 122996  
BROWN, TERRY CLINT  
176 DUCK RD  
COTTON VALLEY, LA 71018-0000  
OTHER OWNERS: BROWN, ROBIN MICHELE WILSON  
TAXES OWED ARE \$342.70 WITH INTEREST & COST TO BE ADDED.  
LOT 125 X 231 FT. IN SE/4 OF NE/4 SEC. 24-22-11

26983 WARD 2-CV 121658  
BUSH, BRIAN JO-SEPH  
9549 OUTLOOK DR  
OVERLAND PARK, KS 66207-0000  
OTHER OWNERS: LOVE, WILLINE  
TAXES OWED ARE \$128.18 WITH INTEREST & COST TO BE ADDED.  
LOT 180 X 210 FT. IN SE/4 OF NE/4 SEC. 18-21-10

61551 WARD 1 101083  
C W & W CONTRACTORS, INC.  
P O BOX 466  
SIBLEY, LA 71073  
TAXES OWED ARE \$2527.39 WITH INTEREST & COST TO BE ADDED.  
30 ACRES - N/2 OF NW/4 OF SW/4 SEC. 4-17-9

21626 WARD 1 108289C  
CAJUN CRETE, LLC  
7688 HWY 371  
SIBLEY, LA 71073-0000  
TAXES OWED ARE \$670.82 WITH INTEREST & COST TO BE ADDED.  
2.42 ACRES - TRACT 542.50 X 202.12 X 512.52 X 200 FT. IN SW/4 OF SW/4 SEC. 35-19-10

38672 WARD 1 101096  
CALDWELL, LOLA E.  
5559 SOUTH LAKE-SHORE DR  
SHREVEPORT, LA 71119  
TAXES OWED ARE \$6.81 WITH INTEREST & COST TO BE ADDED.  
E/2 OF LOT #13, BARNETT SUBDIV., UNIT #1

24181 WARD 2 134491  
CALUMET LUBRICANTS CO., L.P.  
2780 WATERFRONT PKWY E DR, STE 200  
INDIANAPOLIS, IN 46214-0000  
TAXES OWED ARE \$9233.21 WITH INTEREST & COST TO BE ADDED.

11171 WARD 1-MN 113131  
CAMBRE, DIANN D  
2426 AMY DR  
LAPLACE, LA 70068-0000  
TAXES OWED ARE \$940.62 WITH INTEREST & COST TO BE ADDED.  
LOT #8, BLK. 'C', BONNIE HTS. ADDN.

22800 WARD 1-MN 111564  
CANADY, SANDRA GULLETT  
DARBONNE  
217 ELLIS DR  
MINDEN, LA 71055-0000  
OTHER OWNERS: GULLETT, ERIC MCLEAN  
LILES, ANJANETTE GULLETT  
TAXES OWED ARE \$745.56 WITH INTEREST & COST TO BE ADDED.  
LOT #20, BLK. A, BONNIE HTS. ADDN.

24739 WARD 1-MN 110311  
CANDLER, DIANE  
202 BELL STREET  
MINDEN, LA 71055  
TAXES OWED ARE \$1.82 WITH INTEREST & COST TO BE ADDED.  
HOUSE (LOCATED ON LOT #13, TOMPKINS ADDN. ASSESSED TO VIRGINIA WOODS)

15515 WARD 2-SA 122663  
CANSECORAMIREZ, EVELYN  
ESTRELLA  
8940 E PICTUR-ESQUE DR  
GREENWOOD, LA 71033-0000  
TAXES OWED ARE \$74.09 WITH INTEREST & COST TO BE ADDED.  
LOT 105 X 110 FT. ON SAREPTA-PLAIN DEALING HWY. #70 IN W/2 OF SW/4 OF SW/4 SEC. 13-22-11, LESS HWY. R/W. LESS LOT SOLD, & LESS LOT SOLD

22928 WARD 1 101172  
CARR, ELOISE  
BROOKS EST  
C/O PAMELA  
BROOKS JACKSON  
P O BOX 210232  
BEDFORD, TX 76095  
OTHER OWNERS: BROOKS, ARTHUR EST  
BROOKS, ATHELENE  
BROOKS, GRAN-VILLE  
TAXES OWED ARE \$33.40 WITH INTEREST & COST TO BE ADDED.  
20.80 ACRES - UND 4/5 INT. IN & TO: TRACT 857 X 1,320 FT. IN SW/4 OF SE/4 & IN SE/4 OF SW/4 SEC. 8-19-10

31570 WARD 1-MN 130576  
CARR, MICHAEL RAY  
15538 HWY 80  
MINDEN, LA 71055  
TAXES OWED ARE \$198.13 WITH INTEREST & COST TO BE ADDED.  
5.38 ACRES - ALL THAT PART OF TRACT 572.8 X 35 X 1,320 X 905 X 2,021.3 X 880 FT. IN E/2 OF SW/4 SEC. 25-19-9, LESS AC. FOR HWY. R/W (BEING THE EAST 245 FT. OF NE/4 OF SW/4, 7.42 AC. & THE EAST 210 FT. OF SE/4 OF SW/4 LYING NORTH OF U. S. HWY. #80, 2.77 AC.), & ALL THAT PART OF TRACT 49.55 X 327.54 X 15 X 319 FT. BEING LOCATED IN SE/4 OF SW/4 SEC. 25-19-9 (0.19 AC.), LESS 5 ACS DONATED

43001 WARD 1-MN 101179  
CARR, MICHAEL RAY  
15538 HWY 80  
MINDEN, LA 71055  
TAXES OWED ARE \$4405.41 WITH INTEREST & COST TO BE ADDED.  
1.39 ACRES - TRACT 226.23 X 77.65 X 195.91 X 75.65 X 130 X 311.90 FT. IN SW/4 OF SW/4 SEC. 25-19-9

55081 WARD 1 131708A  
CARR, MICHAEL RAY  
15538 HWY 80  
MINDEN, LA 71055-0000  
TAXES OWED ARE \$2016.41 WITH INTEREST & COST TO BE ADDED.  
20.30 ACRES - EAST 552.5 FT. OF W/2 OF NW/4 OF SE/4 & ALL OF EAST 552.5 FT. OF W/2 OF SW/4 OF SE/4 SEC. 25-19-9, LESS 1.77 AC. IN NW/4 OF SE/4 SEC. 25-19-9, S. HWY. 80, & LESS 2.07 AC. IN NW/4 OF SE/4 SEC. 25-19-9, (27.43) X TRACT 49.55 X 327.54 X 15 X 319 FT. IN SE/4 OF SW/4 & SW/4 OF SE/4 SEC. 25-19-9 (0.6 AC ASSESSED OUT CITY LIMITED), & LESS 7.20 ACS DONATED

56495 WARD 1-MN 101178  
CARR, MICHAEL RAY  
15538 HWY 80  
MINDEN, LA 71055  
TAXES OWED ARE \$72.40 WITH INTEREST & COST TO BE ADDED.  
26.17 ACRES - NE/4 OF SW/4 SEC. 25-19-9, LESS 7.22 AC. SOLD. LESS 0.37 AC. SOLD FOR HWY. R/W (32.21 AC.), & TRACT 572.8 X 35 X 1,320 X 905 X 2,021.3 X 880 FT. IN E/2 OF SW/4 & W/2 OF SE/4 SEC. 25-19-9, LESS

0.21 AC. FOR HWY. R/W, LESS 0.06 AC. FOR HWY. R/W, & LESS 1 AC. DONATED IN NW/4 OF SE/4, & LESS ALL THAT PART LOCATED IN E/2 OF SW/4 (10.19 AC.) ANNEXED INTO MINDEN CORP. LIMIT, LESS THE EAST 552.5 FT. OF W/2 OF NW/4 OF SE/4 & LESS ALL OF THE EAST 552.5 FT. OF W/2 OF SW/4 OF SE/4 LYING NORTH OF U. S. HWY. #80, CONT. 25 AC. PARTITIONED (4.69 AC.), LESS 5 ACS DONATED OUT OF NE/4 OF SW/4 SEC. 25-19-09 (IN-SIDE CITY LIMITS)

19181 WARD 1-MN 130576A  
CARR, MICHAEL RAY, SR.  
15538 HWY 80  
MINDEN, LA 71055-0000  
TAXES OWED ARE \$32.08 WITH INTEREST & COST TO BE ADDED.  
10.04 ACRES - TRACT 827.90 X 907.04 FT. IN NW/4 OF SE/4 & NE/4 OF SW/4 SEC. 25-19-9 (17.24 ACS), (LESS 7.20 ACS ASSESSED OUTSIDE CITY LIMITS)

35223 WARD 1 131708B  
CARR, MICHAEL RAY, SR.  
15538 HWY 80  
MINDEN, LA 71055-0000  
TAXES OWED ARE \$13.76 WITH INTEREST & COST TO BE ADDED.  
7.20 ACRES - TRACT 827.90 X 907.04 FT. IN NW/4 OF SE/4 & NE/4 OF SW/4 SEC. 25-19-09 (17.24 ACS) 10.04 ACS ASSESSED INSIDE CITY LIMITED

55243 WARD 1-MN 1110394  
CARTER, KARTHUR  
1202 JACKSON ST  
MINDEN, LA



71075-0000 OTHER OWNERS: COLEMAN, ANEKAHN JANAE COLEMAN, DAJUAN RASHEED TAXES OWED ARE \$173.23 WITH INTEREST & COST TO BE ADDED. LOT #15, BLK. '5', SOUTHSIDE SUBDIV.	SW/4 SEC. 6-21-9, NE/4 OF NE/4 & SE/4 SEC. 11, NW/4 OF NW/4, S/2 OF NW/4, & NE/4 OF SW/4 SEC. 12, N/2 OF NE/4, NE/4 OF NW/4, S/2 OF NW/4, SE/4, E/2 OF SW/4, & NW/4 OF SW/4 SEC. 14-22-10	\$81.15 WITH INTEREST & COST TO BE ADDED. LOTS #116 & 117, BISTINEAU TERRACE SUBDIV., UNIT #5  56732 WARD 2 117169 COMPTON, RUBEN MILTON SR. EST C/O RUBEN M. COMPTON, JR. PO BOX 2330 MAGNOLIA, AR 71754 TAXES OWED ARE \$34.55 WITH INTEREST & COST TO BE ADDED. 12.47 ACRES - UND. 85% INT. IN & TO: UND. 1/6 INT. IN & TO: W/2 OF NW/4 & 8 AC. IN SW CORNER OF SE/4 OF NW/4 SEC. 17-23-9 UND. 3/72 - PARCEL #118766 UND. 1/4 - PARCEL #120060 UND. 15% OF 1/6 - PARCEL #117163 UND. 5/24 - PARCEL #116524 UND. 15/72 - PARCEL #119867 UND. 1/8 - PARCEL #119507 UND. 85% OF 1/6 - PARCEL #117169	#5, BLK. '3', HARRELL HEIGHTS & STRIP 6 X 130 FT. ADJ. IN SW/4 OF NW/4 SEC. 27-19-9 (FORMERLY AN ALLEY)  28400 WARD 1-MN 110651 CORNELIUS, CHAR- LEY (CHARLIE) EST C/O TANISHA ALLEN 36 WATERBURY DR BOSSIER CITY, LA 71111 TAXES OWED ARE \$18.35 WITH INTEREST & COST TO BE ADDED. LOT FRONTING 125 FT. ON BAYOU AVE. X 250 FT. OUT OF LOT #11 WESTON ADDN. IN SW/4 OF SW/4 SEC. 21-19-9	117315 CURTIS, DANNY LAMAR 601 MEADOW CREEK CIRCLE SPRINGHILL, LA 71075 TAXES OWED ARE \$53.86 WITH INTEREST & COST TO BE ADDED. LOT #9, LESS PART PREV. SOLD, & A PORTION OF LOT #8, MEADOW CREEK RANCH SUB- DIV., UNIT #1 IN N/2 OF SW/4 SEC. 7-23-10	TO BE ADDED. LOT 27.9 FT. ON N. MAIN ST. IN SW/4 OF SW/4 SEC. 22-19-9  48526 WARD 1 101788 DANIEL, ELNORA HARDY 5242 HWY 531 DUBBERLY, LA 71024 TAXES OWED ARE \$16.89 WITH INTEREST & COST TO BE ADDED. 3 ACRES - TRACT 210 X 210 X 402 X 210 X 612 X 420 FT. IN SE/4 OF NE/4 SEC. 1-17-9, LESS 1 AC. DONATED	16351 WARD 2 131279A DESSELLE, BAR- BARA ELKINS 4055 HUNTWICK BLVD. ALEXANDRIA, LA 71303-0000 TAXES OWED ARE \$57.93 WITH INTEREST & COST TO BE ADDED. 20 ACRES - S/2 OF NE/4 OF SW/4 SEC. 10-22-9,  55741 WARD 1 102176 DESSELLE, BAR- BARA ELKINS 4055 HUNTWICK BLVD ALEXANDRIA, LA 71303-0000 TAXES OWED ARE \$5.96 WITH INTEREST & COST TO BE ADDED. LOT #21, BLK. 'D', UNIT #2, CYPRESS ISLE LAKE ESTATES SUBDIV.	34577 WARD 1-MN 114714 DORCHEAT REAL ESTATE, LLC 103 PEARL ST MINDEN, LA 71055- 0000 OTHER OWNERS: DELOACH, FRANK ALLEN TAXES OWED ARE \$349.55 WITH INTEREST & COST TO BE ADDED. LOTS #34 & 35, NORTHSIDE SUBDIV.  36293 WARD 1-MN 112559 DORCHEAT REAL ESTATE, LLC 1505 HICKORY DRIVE MINDEN, LA 71055- 0000 TAXES OWED ARE \$428.25 WITH INTEREST & COST TO BE ADDED. LOT #9, BLK. A, RE- SUBDIV. OF COLLEGE ANNEX SUBDIV.	110348 EMERGENCE 180, LLC 25511 BUDDIE RD, STE 2701 THE WOODLANDS, TX 77379-0000 TAXES OWED ARE \$286.92 WITH INTEREST & COST TO BE ADDED. LOT FRONTING 50 FT. ON UNION ST. X 150 FT. OUT OF LOT #2, WARSAW ADDN. IN NW/4 OF NE/4 SEC. 27-19-9, LESS PORTION TO HWY. R/W  47275 WARD 2 118987 EMERSON, DUSTY GARRETT 220 S MURAT NEW ORLEANS, LA 70119-0000 TAXES OWED ARE \$10.87 WITH INTEREST & COST TO BE ADDED. 1.50 ACRES - E/2 OF: TRACT 315 X 420 FT. IN SW/4 OF NW/4 SEC. 30-23-9	
11195 WARD 2 117143A COLLINS, DEREK W 525 SHARP AVE CAMDEN, AR 71701- 0000 TAXES OWED ARE \$14.94 WITH INTEREST & COST TO BE ADDED. LOT FRONTING 105 FT. ON SOUTH SIDE OF SIKES FERRY RD. X 210 X 105 X ? FT.	58340 WARD 2 117161 COMPTON, RUBEN M. SR. EST C/O RUBEN M. COMPTON, JR. PO BOX 2330 MAGNOLIA, AR 71754 TAXES OWED ARE \$289.67 WITH INTEREST & COST TO BE ADDED. 100.33 ACRES - UND. 100.33 AC. INT. IN & TO: E/2 OF NW/4, NE/4 OF SW/4, & SW/4 OF NE/4 SEC. 14-22-9	60839 WARD 1 101464 COMPTON, RUBEN M. SR. EST C/O RUBEN M. COMPTON, JR. PO BOX 2330 MAGNOLIA, AR 71754 TAXES OWED ARE \$13.52 WITH INTEREST & COST TO BE ADDED. LOT #7, AVALON SHORES ESTATES, UNIT #3	18708 WARD 2-CV 121000 COX, MILTON DAVIS 5694 KIPLING PKWY, UNIT 207 NEVADA, CO 80002- 0000 OTHER OWNERS: COX, DONALD RAY COX, MICHAEL LYNN TAXES OWED ARE \$15.15 WITH INTEREST & COST TO BE ADDED. LOT 198.25 X 262.5 FT. IN NE/4 OF NE/4 SEC. 17-21-10	42399 WARD 2-SH 123584 CURTIS, DANNY LAMAR 601 MEADOW CREEK CIRCLE SPRINGHILL, LA 71075 TAXES OWED ARE \$1419.06 WITH INTEREST & COST TO BE ADDED. LOT #8, MEADOW CREEK RANCH SUBDIV. UNIT #1 IN NW/4 OF SW/4 SEC. 7-23-10, LESS THAT PART ASSESSED IN WARD 2-OUT	31010 WARD 1 101802 DARBY, HOWARD 7718 WILLOW ST HOUSTON, TX 77088 OTHER OWNERS: CHAMBERS, CHRIS- TOPHER TODD CHAMBERS, GREGO- RY TONY DARBY, ALEX JOHNSON, DEBORAH ANN CHAMBERS TAXES OWED ARE \$60.23 WITH INTEREST & COST TO BE ADDED. 1 ACRE - A TRIANGU- LAR SHAPED TRACT IN NW COR. OF NE/4 OF SW/4 SEC. 3-17-10	37391 WARD 1-MN 111050 DH COOKSEY PROP- ERTIES, LLC 1425 SHREVEPORT RD MINDEN, LA 71055- 0000 TAXES OWED ARE \$1896.35 WITH INTEREST & COST TO BE ADDED. LOTS #60, 61, 62 & 63, BABB ADDN. IN SE/4 OF SW/4 SEC. 28-19-9	39778 WARD 1-MN 112279 DORCHEAT REAL ESTATE, LLC 103 PEARL ST MINDEN, LA 71055- 0000 OTHER OWNERS: BURNS, BRIAN TAXES OWED ARE \$830.61 WITH INTEREST & COST TO BE ADDED. LOT #3, BLK. 'E', CHANDLER ADDN.	53387 WARD 1-MN 112540 EMERSON, EVERETT KEITH 119 CHRYSLER STREET MINDEN, LA 71055- 0000 OTHER OWNERS: EMERSON, RATHAN KINSEY, WILLIAM A. TAXES OWED ARE \$232.89 WITH INTEREST & COST TO BE ADDED. LOT #13, BLK. F, WASHINGTON HTS., LESS THAT PART PREV. SOLD	
41460 WARD 2-CV 120987 COMPTON, RUBEN M. EST C/O RUBEN M. COMPTON, JR. PO BOX 2330 MAGNOLIA, AR 71754 TAXES OWED ARE \$15.14 WITH INTEREST & COST TO BE ADDED. LOT 40 X 105 FT. IN SW/4 OF NE/4 & LOT 40 X 105 FT. IN SW/4 OF NE/4 IN SEC. 17-21-10	61745 WARD 2 117160 COMPTON, RUBEN M. SR. EST C/O RUBEN M. COMPTON, JR. PO BOX 2330 MAGNOLIA, AR 71754 TAXES OWED ARE \$29.47 WITH INTEREST & COST TO BE ADDED. 10 ACRES - UND. 1/16 INT. IN & TO: E/2 OF NW/4 & SW/4 OF NE/4 & NE/4 OF SW/4 SEC. 14-22-9	53399 WARD 2 117167 COMPTON, RUBEN MILTON, SR. EST C/O RUBEN M. COMPTON, JR. PO BOX 2330 MAGNOLIA, AR 71754-7330 TAXES OWED ARE \$27.05 WITH INTEREST & COST TO BE ADDED. LOT #43, BISTINEAU TERRACE SUBDIV., UNIT #5 IN NW/4 OF SE/4 SEC. 26-18-10	25032 WARD 2 117214 COX, MILTON DAVIS 5694 KIPLING PKWY, UNIT 207 NEVADA, CO 80002- 0000 OTHER OWNERS: COX, DONALD RAY COX, MICHAEL LYNN TAXES OWED ARE \$17.73 WITH INTEREST & COST TO BE ADDED. 10 ACRES - TRACT 165 X 1,320 FT. IN NW/4 OF SW/4 SEC. 19-21-9 & TRACT 165 X 1,320 FT. IN SW/4 OF SW/4 SEC. 23- 21-10	59010 WARD 1-MN 114336 CV CONSULTANTS, L.L.C. 2727 HEARNE AVE STE 301 SHREVEPORT, LA 71103 TAXES OWED ARE \$20995.99 WITH INTEREST & COST TO BE ADDED. LOTS #40 & 41, WIL- LIAMSON JONES MAP OF CITY OF MINDEN IN SW/4 OF SW/4 SEC. 22-19-9, BEING A TRACT 139.95 X 252.00 X 165.45 X 163.83 FT. (0.67 AC.), LESS LOT 40.04 X 20.30 X 40 X 20.20 FT. OUT OF LOT #40 SOLD (0.02 AC.)	33924 WARD 2-SH 123596 DARST, MARK 739 MONTGOMERY DR SPRINGHILL, LA 71075-0000 TAXES OWED ARE \$548.38 WITH INTEREST & COST TO BE ADDED. 3.97 ACRES - TRACT 494.61 X 254.10 X 527 X 444.44 FT. OUT OF GOV'T. LOT #2 IN SW/4 OF NE/4 SEC. 3-23-11	53245 WARD 1 102034 DOERNER, J. B., JR. 515 HORSESHOE LOOP DOYLINE, LA 71023 TAXES OWED ARE \$604.15 WITH INTEREST & COST TO BE ADDED. A LOT OUT OF LOT #12, E. B. & J. B. SMITH SUBDIV. IN IN GOV'T. LOT #9, SEC. 24-18-10	42171 WARD 1-MN 112591 DORCHEAT REAL ESTATE, LLC 1505 HICKORY DRIVE MINDEN, LA 71055- 0000 TAXES OWED ARE \$459.53 WITH INTEREST & COST TO BE ADDED. LOT #1, BLK. 'I', HILL- CREST SUBDIV.	45744 WARD 1-MN 114963 DORCHEAT REAL ESTATE, LLC 103 PEARL ST MINDEN, LA 71055- 0000 TAXES OWED ARE \$699.01 WITH INTEREST & COST TO BE ADDED. LOT #8, KENNON SUBDIV. #4	25714 WARD 2-SH 123756 ERVEN, HOWARD GLEN, EST 207 MORGAN ST SPRINGHILL, LA 71075 TAXES OWED ARE \$265.77 WITH INTEREST & COST TO BE ADDED. W/2 OF LOT #55, J. M. MORGAN ADDN.
52225 WARD 2 117154 COMPTON, RUBEN M. EST C/O RUBEN M. COMPTON, JR. PO BOX 2330 MAGNOLIA, AR 71754-2330 TAXES OWED ARE \$1236.13 WITH INTEREST & COST TO BE ADDED. 3.89 ACRES - TRACT 125 X 660 FT. IN SE/4 OF NE/4 SEC. 10-23-10 (1.89 AC.) & SOUTH 2 AC. OF NW/4 OF SE/4 OF NE/4 SEC. 10-23-10	61745 WARD 2 117160 COMPTON, RUBEN M. SR. EST C/O RUBEN M. COMPTON, JR. PO BOX 2330 MAGNOLIA, AR 71754-2330 TAXES OWED ARE \$29.47 WITH INTEREST & COST TO BE ADDED. 10 ACRES - UND. 1/16 INT. IN & TO: E/2 OF NW/4 & SW/4 OF NE/4 & NE/4 OF SW/4 SEC. 14-22-9	53399 WARD 2 117167 COMPTON, RUBEN MILTON, SR. EST C/O RUBEN M. COMPTON, JR. PO BOX 2330 MAGNOLIA, AR 71754-7330 TAXES OWED ARE \$27.05 WITH INTEREST & COST TO BE ADDED. LOT #43, BISTINEAU TERRACE SUBDIV., UNIT #5 IN NW/4 OF SE/4 SEC. 26-18-10	25032 WARD 2 117214 COX, MILTON DAVIS 5694 KIPLING PKWY, UNIT 207 NEVADA, CO 80002- 0000 OTHER OWNERS: COX, DONALD RAY COX, MICHAEL LYNN TAXES OWED ARE \$17.73 WITH INTEREST & COST TO BE ADDED. 10 ACRES - TRACT 165 X 1,320 FT. IN NW/4 OF SW/4 SEC. 19-21-9 & TRACT 165 X 1,320 FT. IN SW/4 OF SW/4 SEC. 23- 21-10	59010 WARD 1-MN 114336 CV CONSULTANTS, L.L.C. 2727 HEARNE AVE STE 301 SHREVEPORT, LA 71103 TAXES OWED ARE \$20995.99 WITH INTEREST & COST TO BE ADDED. LOTS #40 & 41, WIL- LIAMSON JONES MAP OF CITY OF MINDEN IN SW/4 OF SW/4 SEC. 22-19-9, BEING A TRACT 139.95 X 252.00 X 165.45 X 163.83 FT. (0.67 AC.), LESS LOT 40.04 X 20.30 X 40 X 20.20 FT. OUT OF LOT #40 SOLD (0.02 AC.)	33924 WARD 2-SH 123596 DARST, MARK 739 MONTGOMERY DR SPRINGHILL, LA 71075-0000 TAXES OWED ARE \$548.38 WITH INTEREST & COST TO BE ADDED. 3.97 ACRES - TRACT 494.61 X 254.10 X 527 X 444.44 FT. OUT OF GOV'T. LOT #2 IN SW/4 OF NE/4 SEC. 3-23-11	53245 WARD 1 102034 DOERNER, J. B., JR. 515 HORSESHOE LOOP DOYLINE, LA 71023 TAXES OWED ARE \$604.15 WITH INTEREST & COST TO BE ADDED. A LOT OUT OF LOT #12, E. B. & J. B. SMITH SUBDIV. IN IN GOV'T. LOT #9, SEC. 24-18-10	42171 WARD 1-MN 112591 DORCHEAT REAL ESTATE, LLC 1505 HICKORY DRIVE MINDEN, LA 71055- 0000 TAXES OWED ARE \$459.53 WITH INTEREST & COST TO BE ADDED. LOT #1, BLK. 'I', HILL- CREST SUBDIV.	45744 WARD 1-MN 114963 DORCHEAT REAL ESTATE, LLC 103 PEARL ST MINDEN, LA 71055- 0000 TAXES OWED ARE \$699.01 WITH INTEREST & COST TO BE ADDED. LOT #8, KENNON SUBDIV. #4	25714 WARD 2-SH 123756 ERVEN, HOWARD GLEN, EST 207 MORGAN ST SPRINGHILL, LA 71075 TAXES OWED ARE \$265.77 WITH INTEREST & COST TO BE ADDED. W/2 OF LOT #55, J. M. MORGAN ADDN.
54399 WARD 2-CV 120988 COMPTON, RUBEN M. EST C/O RUBEN M. COMPTON, JR. PO BOX 2330 MAGNOLIA, AR 71754-2330 TAXES OWED ARE \$9.79 WITH INTEREST & COST TO BE ADDED. LOT 31 X 105 FT. IN SW/4 OF NE/4 SEC 8-21-10 (MISDES 17-21-10)	35603 WARD 2-CV 120988 COMPTON, RUBEN M. SR. EST C/O RUBEN M. COMPTON, JR. PO BOX 2330 MAGNOLIA, AR 71754-7330 TAXES OWED ARE \$9.79 WITH INTEREST & COST TO BE ADDED. 1.48 ACRES - 1.48 AC. TRACT IN NW/4 OF NE/4 & IN SW/4 OF NE/4 SEC. 17-21-10	53399 WARD 2 117167 COMPTON, RUBEN MILTON, SR. EST C/O RUBEN M. COMPTON, JR. PO BOX 2330 MAGNOLIA, AR 71754-7330 TAXES OWED ARE \$27.05 WITH INTEREST & COST TO BE ADDED. LOT #43, BISTINEAU TERRACE SUBDIV., UNIT #5 IN NW/4 OF SE/4 SEC. 26-18-10	25032 WARD 2 117214 COX, MILTON DAVIS 5694 KIPLING PKWY, UNIT 207 NEVADA, CO 80002- 0000 OTHER OWNERS: COX, DONALD RAY COX, MICHAEL LYNN TAXES OWED ARE \$17.73 WITH INTEREST & COST TO BE ADDED. 10 ACRES - TRACT 165 X 1,320 FT. IN NW/4 OF SW/4 SEC. 19-21-9 & TRACT 165 X 1,320 FT. IN SW/4 OF SW/4 SEC. 23- 21-10	59010 WARD 1-MN 114336 CV CONSULTANTS, L.L.C. 2727 HEARNE AVE STE 301 SHREVEPORT, LA 71103 TAXES OWED ARE \$20995.99 WITH INTEREST & COST TO BE ADDED. LOTS #40 & 41, WIL- LIAMSON JONES MAP OF CITY OF MINDEN IN SW/4 OF SW/4 SEC. 22-19-9, BEING A TRACT 139.95 X 252.00 X 165.45 X 163.83 FT. (0.67 AC.), LESS LOT 40.04 X 20.30 X 40 X 20.20 FT. OUT OF LOT #40 SOLD (0.02 AC.)	33924 WARD 2-SH 123596 DARST, MARK 739 MONTGOMERY DR SPRINGHILL, LA 71075-0000 TAXES OWED ARE \$548.38 WITH INTEREST & COST TO BE ADDED. 3.97 ACRES - TRACT 494.61 X 254.10 X 527 X 444.44 FT. OUT OF GOV'T. LOT #2 IN SW/4 OF NE/4 SEC. 3-23-11	53245 WARD 1 102034 DOERNER, J. B., JR. 515 HORSESHOE LOOP DOYLINE, LA 71023 TAXES OWED ARE \$604.15 WITH INTEREST & COST TO BE ADDED. A LOT OUT OF LOT #12, E. B. & J. B. SMITH SUBDIV. IN IN GOV'T. LOT #9, SEC. 24-18-10	42171 WARD 1-MN 112591 DORCHEAT REAL ESTATE, LLC 1505 HICKORY DRIVE MINDEN, LA 71055- 0000 TAXES OWED ARE \$459.53 WITH INTEREST & COST TO BE ADDED. LOT #1, BLK. 'I', HILL- CREST SUBDIV.	45744 WARD 1-MN 114963 DORCHEAT REAL ESTATE, LLC 103 PEARL ST MINDEN, LA 71055- 0000 TAXES OWED ARE \$699.01 WITH INTEREST & COST TO BE ADDED. LOT #8, KENNON SUBDIV. #4	25714 WARD 2-SH 123756 ERVEN, HOWARD GLEN, EST 207 MORGAN ST SPRINGHILL, LA 71075 TAXES OWED ARE \$265.77 WITH INTEREST & COST TO BE ADDED. W/2 OF LOT #55, J. M. MORGAN ADDN.
12632 WARD 2 117163 COMPTON, RUBEN M. SR. EST C/O RUBEN M. COMPTON, JR. PO BOX 2330 MAGNOLIA, AR 71754-7330 TAXES OWED ARE \$10.87 WITH INTEREST & COST TO BE ADDED. 2.20 ACRES - UND. 15% INT. IN & TO: UND. 1/6 INT. IN & TO: W/2 OF NW/4 & 8 AC. IN SW CORNER OF SE/4 OF NW/4 SEC. 17-23-9 UND. 3/72 - PARCEL #118766 UND. 1/4 - PARCEL #120060 UND. 15% OF 1/6 - PARCEL #117163 UND. 5/24 - PARCEL #116524 UND. 15/72 - PARCEL #119867 UND. 1/8 - PARCEL #119507 UND. 85% OF 1/6 - PARCEL #117169	43192 WARD 2-SH 123525 COMPTON, RUBEN M. SR. EST C/O RUBEN M. COMPTON, JR. PO BOX 2330 MAGNOLIA, AR 71754-7330 TAXES OWED ARE \$214.05 WITH INTEREST & COST TO BE ADDED. LOT FRONTING 30 FT. ON FIRST ST. SE X 160 FT. IN NW/4 OF SW/4 SEC. 12-23-11	53399 WARD 2 117167 COMPTON, RUBEN MILTON, SR. EST C/O RUBEN M. COMPTON, JR. PO BOX 2330 MAGNOLIA, AR 71754-7330 TAXES OWED ARE \$27.05 WITH INTEREST & COST TO BE ADDED. LOT #43, BISTINEAU TERRACE SUBDIV., UNIT #5 IN NW/4 OF SE/4 SEC. 26-18-10	25032 WARD 2 117214 COX, MILTON DAVIS 5694 KIPLING PKWY, UNIT 207 NEVADA, CO 80002- 0000 OTHER OWNERS: COX, DONALD RAY COX, MICHAEL LYNN TAXES OWED ARE \$17.73 WITH INTEREST & COST TO BE ADDED. 10 ACRES - TRACT 165 X 1,320 FT. IN NW/4 OF SW/4 SEC. 19-21-9 & TRACT 165 X 1,320 FT. IN SW/4 OF SW/4 SEC. 23- 21-10	59010 WARD 1-MN 114336 CV CONSULTANTS, L.L.C. 2727 HEARNE AVE STE 301 SHREVEPORT, LA 71103 TAXES OWED ARE \$20995.99 WITH INTEREST & COST TO BE ADDED. LOTS #40 & 41, WIL- LIAMSON JONES MAP OF CITY OF MINDEN IN SW/4 OF SW/4 SEC. 22-19-9, BEING A TRACT 139.95 X 252.00 X 165.45 X 163.83 FT. (0.67 AC.), LESS LOT 40.04 X 20.30 X 40 X 20.20 FT. OUT OF LOT #40 SOLD (0.02 AC.)	33924 WARD 2-SH 123596 DARST, MARK 739 MONTGOMERY DR SPRINGHILL, LA 71075-0000 TAXES OWED ARE \$548.38 WITH INTEREST & COST TO BE ADDED. 3.97 ACRES - TRACT 494.61 X 254.10 X 527 X 444.44 FT. OUT OF GOV'T. LOT #2 IN SW/4 OF NE/4 SEC. 3-23-11	53245 WARD 1 102034 DOERNER, J. B., JR. 515 HORSESHOE LOOP DOYLINE, LA 71023 TAXES OWED ARE \$604.15 WITH INTEREST & COST TO BE ADDED. A LOT OUT OF LOT #12, E. B. & J. B. SMITH SUBDIV. IN IN GOV'T. LOT #9, SEC. 24-18-10	42171 WARD 1-MN 112591 DORCHEAT REAL ESTATE, LLC 1505 HICKORY DRIVE MINDEN, LA 71055- 0000 TAXES OWED ARE \$459.53 WITH INTEREST & COST TO BE ADDED. LOT #1, BLK. 'I', HILL- CREST SUBDIV.	45744 WARD 1-MN 114963 DORCHEAT REAL ESTATE, LLC 103 PEARL ST MINDEN, LA 71055- 0000 TAXES OWED ARE \$699.01 WITH INTEREST & COST TO BE ADDED. LOT #8, KENNON SUBDIV. #4	25714 WARD 2-SH 123756 ERVEN, HOWARD GLEN, EST 207 MORGAN ST SPRINGHILL, LA 71075 TAXES OWED ARE \$265.77 WITH INTEREST & COST TO BE ADDED. W/2 OF LOT #55, J. M. MORGAN ADDN.
22368 WARD 2 117166 COMPTON, RUBEN M. SR. EST C/O RUBEN M. COMPTON, JR. PO BOX 2330 MAGNOLIA, AR 71754-7330 TAXES OWED ARE \$63.09 WITH INTEREST & COST TO BE ADDED. 20 ACRES - N/2 OF SW/4 OF NE/4 SEC. 10-23-10	19190 WARD 2-CL 121791 COMPTON, RUBEN MILTON EST C/O RUBEN M. COMPTON, JR. PO BOX 2330 MAGNOLIA, AR 71754-2330 TAXES OWED ARE \$33.22 WITH INTEREST & COST TO BE ADDED. LOT 50 X 50 FT. IN NE/4 OF SE/4 SEC. 24-23-11, LOT 50 X 50 FT. IN NE/4 OF SE/4 SEC. 24-23-11, & LOT 100 X 110 FT. IN NE/4 OF SE/4 SEC. 24-23-11	53399 WARD 2 117167 COMPTON, RUBEN MILTON, SR. EST C/O RUBEN M. COMPTON, JR. PO BOX 2330 MAGNOLIA, AR 71754-7330 TAXES OWED ARE \$27.05 WITH INTEREST & COST TO BE ADDED. LOT #43, BISTINEAU TERRACE SUBDIV., UNIT #5 IN NW/4 OF SE/4 SEC. 26-18-10	25032 WARD 2 117214 COX, MILTON DAVIS 5694 KIPLING PKWY, UNIT 207 NEVADA, CO 80002- 0000 OTHER OWNERS: COX, DONALD RAY COX, MICHAEL LYNN TAXES OWED ARE \$17.73 WITH INTEREST & COST TO BE ADDED. 10 ACRES - TRACT 165 X 1,320 FT. IN NW/4 OF SW/4 SEC. 19-21-9 & TRACT 165 X 1,320 FT. IN SW/4 OF SW/4 SEC. 23- 21-10	59010 WARD 1-MN 114336 CV CONSULTANTS, L.L.C. 2727 HEARNE AVE STE 301 SHREVEPORT, LA 71103 TAXES OWED ARE \$20995.99 WITH INTEREST & COST TO BE ADDED. LOTS #40 & 41, WIL- LIAMSON JONES MAP OF CITY OF MINDEN IN SW/4 OF SW/4 SEC. 22-19-9, BEING A TRACT 139.95 X 252.00 X 165.45 X 163.83 FT. (0.67 AC.), LESS LOT 40.04 X 20.30 X 40 X 20.20 FT. OUT OF LOT #40 SOLD (0.02 AC.)	33924 WARD 2-SH 123596 DARST, MARK 739 MONTGOMERY DR SPRINGHILL, LA 71075-0000 TAXES OWED ARE \$548.38 WITH INTEREST & COST TO BE ADDED. 3.97 ACRES - TRACT 494.61 X 254.10 X 527 X 444.44 FT. OUT OF GOV'T. LOT #2 IN SW/4 OF NE/4 SEC. 3-23-11	53245 WARD 1 102034 DOERNER, J. B., JR. 515 HORSESHOE LOOP DOYLINE, LA 71023 TAXES OWED ARE \$604.15 WITH INTEREST & COST TO BE ADDED. A LOT OUT OF LOT #12, E. B. & J. B. SMITH SUBDIV. IN IN GOV'T. LOT #9, SEC. 24-18-10	42171 WARD 1-MN 112591 DORCHEAT REAL ESTATE, LLC 1505 HICKORY DRIVE MINDEN, LA 71055- 0000 TAXES OWED ARE \$459.53 WITH INTEREST & COST TO BE ADDED. LOT #1, BLK. 'I', HILL- CREST SUBDIV.	45744 WARD 1-MN 114963 DORCHEAT REAL ESTATE, LLC 103 PEARL ST MINDEN, LA 71055- 0000 TAXES OWED ARE \$699.01 WITH INTEREST & COST TO BE ADDED. LOT #8, KENNON SUBDIV. #4	25714 WARD 2-SH 123756 ERVEN, HOWARD GLEN, EST 207 MORGAN ST SPRINGHILL, LA 71075 TAXES OWED ARE \$265.77 WITH INTEREST & COST TO BE ADDED.<



OF MINDEN-COTTON VALLEY RD. & THE EAST RAW OF FULLER PUBLIC RD. & RUNNING THENCE NORTH 66 DEG. WEST 100 FT. THENCE NORTH 45 DEG. WEST 440 FT. THENCE NORTH 63 DEG. EAST 372 FT., THENCE SOUTH 227 FT., THENCE SOUTH 6-3/4 DEG. EAST 100 FT., THENCE SOUTH 14-3/4 DEG. EAST 100 FT., THENCE SOUTH 23 DEG. EAST 100 FT. TO POB.

38416 WARD 1 120321 FLOURNOY, SHAUNDA C/O VASHTIC FLOURNOY 365 MATHER ST-APT. #29 HAMDEN, CT 71055 OTHER OWNERS: FLOURNOY, EARNEST FLOURNOY, GEORGE JR. FLOURNOY, VASHTI TAXES OWED ARE \$12.88 WITH INTEREST & COST TO BE ADDED. 8.02 ACRES - TRACT 937.26 X 467.80 X 726.82 X 420.12 FT. IN N/2 OF SE/4 SEC. 10-20-10

51788 WARD 2-CV 121097 FLOWERS, RUBY JOYCE SLACK, EST PO BOX 674 COTTON VALLEY, LA 71018 TAXES OWED ARE \$224.38 WITH INTEREST & COST TO BE ADDED. LOT 164 X 75 X 12 X 50 X 176 X 125 FT. OUT OF BLK. 'B'. LUCKY-MCCLELLAND ADDN. IN NE/4 OF NW/4 SEC. 17-21-10

34235 WARD 1 102359 FOSTER, JOE L. ETAL 303 BOSSIER ST HEFLIN, LA 71039 OTHER OWNERS: FOSTER, CAROLYN TAXES OWED ARE \$32.74 WITH INTEREST & COST TO BE ADDED. LOTS #42 & 43, BLK. 'C', LOTS #4 & 5, BLK. 'D', UNIT #1 & LOT #36, BLK. 'D', LOTS #5 & 6, BLK. 'H', LOTS #12 & 13, BLK. 'J', LOTS #1 & 2, BLK. 'K', UNIT #2 & LOT #8, BLK. 'E', UNIT #4, CY-PRESS ISLE LAKE ESTATES SUBDIV.

17887 WARD 1-MN 102365 FOSTER, RANCE DEWAYNE 399 CAREY LANE MINDEN, LA 71055-0000 TAXES OWED ARE \$1926.69 WITH INTEREST & COST TO BE ADDED. LOTS #18 & 19, UNIT #2, BEAVER CREEK SUBDIV.

56300 WARD 1-MN 102364 FOSTER, RANCE DEWAYNE 399 CAREY LANE MINDEN, LA 71055-0000 TAXES OWED ARE \$177.98 WITH INTEREST & COST TO BE ADDED. LOTS #2 & 3, UNIT #5, BEAVER CREEK SUBDIV.

12151 WARD 2-CL 122114 FRAZIER, JAMORRIS JONTE 401 S PARK DR SPRINGHILL, LA 71075-0000 OTHER OWNERS: COLEMAN, RONNIE TAXES OWED ARE \$31.76 WITH INTEREST & COST TO BE ADDED. 4.49 ACRES - TRACT 75 X 150 X 425 X 510 X 450 X 100 X 50 X 40 X 50 X 240 X 50 X 280 FT., LESS 0.5 AC. EX-CHANGED & TRACT 100 X 150 FT. IN N/2 OF NW/4 OF NE/4 SEC. 25-23-11 (ADJ.), LESS 1 AC. PREV. SOLD & LESS 0.07 AC. SOLD

24938 WARD 1-MN 111216 FRAZIER, ROBERT GEORGE C/O ROBERT FRAZIER, JR 642 CRAWFORD RD ARCADIA, LA 71001-0000 TAXES OWED ARE \$231.92 WITH INTEREST & COST TO BE ADDED. LOT 50 X 100 FT. OUT OF LOT #1, MARIAH LEARY EST. PART. IN SW/4 OF NE/4 SEC. 27-19-9

47230 WARD 1 102624 GIBSON, ULYSSES JR. 3021 RETTA HOUSTON, TX 77026 TAXES OWED ARE \$107.89 WITH INTEREST & COST TO BE ADDED. 9.09 ACRES - TRACT 330 X 2,640 FT. IN SW/4 OF SW/4 & IN SE/4 OF SW/4 SEC. 12-17-9, LESS 1 AC. SOLD, LESS 8.90 AC. DONATED & LESS 1.01 AC. ASSESSED SEPARATELY

13376 WARD 2

117739C GILDON, JIMMY DAR-RELL, EST 880 PONDER RD SHONGALOO, LA 71072-0000 TAXES OWED ARE \$16.81 WITH INTEREST & COST TO BE ADDED. 9.89 ACRES - TRACT 525.63 X 252.66 X 188.48 X 54.40 X 41.08 X 423.54 X 879.91 X 471.73 FT. IN NE/4 OF NE/4 SEC. 35 & NW/4 OF NW/4 SEC. 36-23-10

28215 WARD 2-CV 121120 GOLDSBY, KIRKLEY R. C/O STEVEN GOLDSBY 155 LINDSEY AVE COTTON VALLEY, LA 71018 TAXES OWED ARE \$679.28 WITH INTEREST & COST TO BE ADDED. LOTS #14, 15, 16, 17, 18, 19, 30, 31, 32, 33, 34 & 35, BLK. 'A', SUPPLEMENTARY PLAT OF HODGES ADDN.

24989 WARD 2-SH 123922 GONZALEZ, ANA LOUISE GOODGION P O BOX 581 CULLEN, LA 71021-0000 TAXES OWED ARE \$13.22 WITH INTEREST & COST TO BE ADDED. LOT 140 X 30 X 133 X 6-7/8 FT. IN NW/4 OF SE/4 SEC. 1-23-11

33522 WARD 1-MN 110163 GOODING, VERNON RAY, JR 116 MCARTHUR DR MINDEN, LA 71055-0000 TAXES OWED ARE \$34.64 WITH INTEREST & COST TO BE ADDED. LOT #9, BLK. 'I', HILL-CREST SUBDIV. 37201 WARD 2-SH 123015 GRAYSON BOUCHER APPRAISAL SERVICES, LLC 9008 VUE FLEUR LANE SHREVEPORT, LA 71106-0000 TAXES OWED ARE \$1296.40 WITH INTEREST & COST TO BE ADDED. LOT 40 X 120 FT. OUT OF BLK. 'I', PINEWOODS LUMBER CO. SUBDIV. IN SW/4 OF NW/4 SEC. 12-23-11

15726 WARD 1-MN 111457 GREEN, LONZIE D. 11988 GRAHAM RD KEITHVILLE, LA 71047-0000 OTHER OWNERS: COLLINS, PAMELA D. GREEN, JAMES E. SR. GREEN, JIMMIE B. GREEN, MARTIN A. GREEN, NAPOLEON SR. JOHNSON, JACQUE-LINE TAXES OWED ARE \$262.14 WITH INTEREST & COST TO BE ADDED. LOT #5, BLK. D, WASHINGTON HTS.

57950 WARD 1-MN 111503 GREENING, ROBERT EST. 611 SUNSET LANE MINDEN, LA 71055 TAXES OWED ARE \$130.53 WITH INTEREST & COST TO BE ADDED. LOT FRONTING 50 FT. ON STREET X 100 FT. OUT OF LOT #7, WARSAW ADDN. IN NE/4 OF NE/4 SEC. 27-19-9 (DESC. AS BEING LOT #3)

50724 WARD 1-MN 111531 GRIFFITH, BOBBY JOE, EST 631 ELM ST MINDEN, LA 71055-0000 TAXES OWED ARE \$1887.72 WITH INTEREST & COST TO BE ADDED. LOT FRONTING 180 FT. ON ELM ST. (180 X 322 X 182 X 306 FT.) IN SE/4 OF NW/4 SEC. 22-19-9 & STRIP 15 X 322.05 X 15.05 X 322 FT. ADJ. IN SE/4 OF NW/4 SEC. 22-19-9 (FORMERLY A STREET) 27325 WARD 1 105306 HACKBARTH, PENNY W 143 TOM MURPHY RD JAMESTOWN, LA 71045-0000 TAXES OWED ARE \$1477.33 WITH INTEREST & COST TO BE ADDED. LOT #7, COUNTRY PINES SUBDIV. IN SEC. 25-19-9

14814 WARD 1 102930 HADWIN, THOMAS LEE, EST. C/O JUSTIN HADWIN 633 LESSIE DRIVE STONEWALL, LA 71078-0000 TAXES OWED ARE \$328.47 WITH INTEREST & COST TO BE ADDED. 5 ACRES - TRACT 188.5 X 1,156 FT. IN NW/4 OF NW/4 SEC. 29-18-8

44179 WARD 1-MN 113422 HAMM, DONALD 302 COLLEGE MINDEN, LA 71055-

0000 TAXES OWED ARE \$1328.97 WITH INTEREST & COST TO BE ADDED. LOTS #4, 5 & 6 & WEST 10 FT. OF LOT #3 BLK. '2' GOODE ANNEX IN SW/4 OF NE/4 SEC. 22-19-9

50589 WARD 1-MN 111653 HAMM, DONALD WAYNE 302 COLLEGE ST. MINDEN, LA 71055 TAXES OWED ARE \$665.56 WITH INTEREST & COST TO BE ADDED. LOT FRONTING 40 FT. ON GOODE AVE. X 87 X 70 X 71.20 FT. & LOT 104.30 X 71.20 X 129.9 FT. ADJ. IN SW/4 OF NW/4 SEC. 23-19-9

53952 WARD 1-MN 111654 HAMM, DONALD WAYNE 302 N. COLLEGE ST. MINDEN, LA 71055 TAXES OWED ARE \$672.15 WITH INTEREST & COST TO BE ADDED. LOT 100 X 245 FT. IN NW/4 OF SW/4 SEC. 22-19-9 & STRIP 16 X 245 FT. (ADJ.) FOR- MERLY AN ALLEY IN NW/4 OF SW/4 SEC. 22-19-9

11108 WARD 1 107398 HAMM, GLENN DAVID 108 COLBERT DR MINDEN, LA 71055-0000 OTHER OWNERS: HAMM, CHARLOTTE JONES TAXES OWED ARE \$1499.12 WITH INTEREST & COST TO BE ADDED. LOT #43, SMITH-WOOD SUBDIV.

44377 WARD 1 130781 HANSEN, TEDD JOHN, III 165 GREENPARK RD DOYLIN, LA 71023-0000 TAXES OWED ARE \$1541.65 WITH INTEREST & COST TO BE ADDED. 6.20 ACRES - SOUTH 464.40 FT. OF EAST 815.90 FT. OF SE/4 OF SE/4 SEC. 33-17-10 (INCLUDES LOTS #14, 15, & 16, S. P. BEDINGFIELD SUB-DIV.), LESS 2 AC. BEING LOT # 17 S.P. BEDINGFIELD SUBDIV.

50655 WARD 2-CL 121918 HARDEN, JACKIE (NMI) 819 BURNT BRIDGE RD MAGNOLIA, AR 71753-0007 OTHER OWNERS: HARDEN, FRANCES JOYCE BELL TAXES OWED ARE \$1046.76 WITH INTEREST & COST TO BE ADDED. LOT #10, BOUCHER SUBDIV. & LOT 69 X 118 X 68 X 126 FT. IN NW/4 OF NE/4 SEC. 25-23-11 (ADJ.)

14732 WARD 2-CL 121923 HARRIS, ELIJAH P O BOX 787 CULLEN, LA 71021 TAXES OWED ARE \$15.88 WITH INTEREST & COST TO BE ADDED. LOT 40 X 100 FT. IN NE/4 OF SE/4 SEC. 24-23-11

19023 WARD 1-MN 110938 HARRIS, FREDDIE L. 305 MARTIN LUTHER KING DR MINDEN, LA 71055-0000 TAXES OWED ARE \$94.92 WITH INTEREST & COST TO BE ADDED. LOT #1 & E/2 OF LOT #2, BLK. '11', HARRELL HTS.

14343 WARD 1-MN 110910 HARRIS, FREDDIE LORENZO 305 MARTIN LUTHER KING DR MINDEN, LA 71055-0000 TAXES OWED ARE \$11.87 WITH INTEREST & COST TO BE ADDED. LOT #5, BLK. '2', HAR-RELL HTS. 39319 WARD 1-MN 112302 HARRIS, FREDDIE LORENZO 305 MARTIN LUTHER KING DRIVE MINDEN, LA 71055-0000 TAXES OWED ARE \$35.61 WITH INTEREST & COST TO BE ADDED. LOT 45 X 80 FT. OUT OF LOTS #13 & 14, BLK. 6, HARRELL HTS. & STRIP 6 X 80 FT. ADJ. IN SW/4 OF NW/4 SEC. 27-19-9 (FORMERLY AN ALLEY)

44729 WARD 1-MN 113847 HARRIS, FREDDIE LORENZO 305 MARTIN LUTHER KING DRIVE MINDEN, LA 71055-0000 TAXES OWED ARE \$35.59 WITH INTEREST & COST TO BE ADDED. LOT #31, BLK. 11, HARRELL HTS. 59022 WARD 1-MN 110894 HARRIS, FREDDIE

LORENZO 305 MARTIN LUTHER KING DR MINDEN, LA 71055-0000 TAXES OWED ARE \$32.36 WITH INTEREST & COST TO BE ADDED. LOT #32, BLK. '11', HARRELL HEIGHTS

39365 WARD 1-MN 110361 HARRIS, MARY L 908 DURWOOD DRIVE MINDEN, LA 71055 TAXES OWED ARE \$734.58 WITH INTEREST & COST TO BE ADDED. THE NORTH 75 FT. OF LOTS #1, 2, 3, BLK. 'A', WEST-GATE ADDN.

27766 WARD 1-MN 110736 HARRIS, TRAYERN TYRONE 1309 APPLE ST MINDEN, LA 71055-0000 TAXES OWED ARE \$632.11 WITH INTEREST & COST TO BE ADDED. LOT #45, NORTHSIDE SUBDIV.

29542 WARD 2-SA 122705 HARVILL, LELAND DAWAYNE 146 COYLE ST SAREPTA, LA 71071 OTHER OWNERS: HARVILL, CAROL TREXLER TAXES OWED ARE \$94.16 WITH INTEREST & COST TO BE ADDED. LOT 148 X 220 FT. IN NE/4 OF SE/4 SEC. 24-22-11

17978 WARD 1-MN 113581 HAWKINS, KYNDALL D'ASIA 901 PARK HIGHWAY MINDEN, LA 71055-0000 TAXES OWED ARE \$284.77 WITH INTEREST & COST TO BE ADDED. LOT #10, E/2 OF LOT #11, W/2 OF LOT #11, & , LOT #12, BLK. '8' GOODE ANNEX, STRIP 7 X 150 FT. (ADJ.) (FOR- MERLY AN ALLEY) IN NW/4 OF NE/4 SEC. 22-19-9 & STRIP FRONTING 24 FT. ON PARK HWY. X 150 FT. (ADJ.) LOTS #10, 11 & 12 BLK. '8' (FORMERLY AN ALLEY) IN NW/4 OF NE/4 SEC. 22-19-9

52074 WARD 1 103171 HAYDEN, JAMES E. P O BOX 421 DOYLIN, LA 71023-0000 TAXES OWED ARE \$247.10 WITH INTEREST & COST TO BE ADDED. LOT #3, BISTINEAU TERRACE SUBDIV., UNIT #2

40331 WARD 2-SH 125177 HAYNES, DEBRA FRIDAY 1401 NORTH ACRES CIRCLE SPRINGHILL, LA 71075-0000 TAXES OWED ARE \$1017.41 WITH INTEREST & COST TO BE ADDED. LOT #52, O'BIER PLACE ADDN. #3

19603 WARD 2-SH 124074 HAYNES, JIMMY BRUCE 1401 NORTH ACRES CIRCLE SPRINGHILL, LA 71075 OTHER OWNERS: HAYNES, DEBRA JOY FRIDAY TAXES OWED ARE \$793.72 WITH INTEREST & COST TO BE ADDED. LOTS #3 & 4, NORTH ACRES ADDN., UNIT #4

24633 WARD 2-SH 124073 HAYNES, JIMMY BRUCE 1401 NORTH ACRES CIRCLE SPRINGHILL, LA 71075 OTHER OWNERS: HAYNES, DEBRA JOY FRIDAY TAXES OWED ARE \$554.44 WITH INTEREST & COST TO BE ADDED. LOT #52, BOUCHER & SLACK PARK SUBDIV., UNIT #4, LESS TRIANGULAR STRIP OFF SE SIDE

30149 WARD 1 102133 HEARD, LASHANDRA DYNELL 2611 HWY 532 MINDEN, LA 71055-0000 TAXES OWED ARE \$59.58 WITH INTEREST & COST TO BE ADDED. 1.25 ACRES - TRACT 42.96 X 513.40 X 106.38 X 530.50 X 62.04 FT. IN N/2 OF NW/4 OF NW/4 SEC. 4 & IN N/2 OF NE/4 OF NE/4 SEC. 5-18-8

19624 WARD 1 103233 HEDRICK, NICKY C/O CHRISTOPHER HEDRICK 240 BISTINEAU CHURCH RD HEFLIN, LA 71039 OTHER OWNERS: HEDRICK, JUDY BALLEW TAXES OWED ARE \$303.64 WITH INTEREST & COST TO BE ADDED. 1.71 ACRES - TRACT 250 X 338.3 X 189.5 X 334 FT. IN SE/4 OF SW/4 SEC. 34-17-9

23615 WARD 2-CL 121732 HENDERSON, RICH-ARD DARREN P O BOX 911 CULLEN, LA 71021-0911 TAXES OWED ARE \$40.44 WITH INTEREST & COST TO BE ADDED. S/2 OF LOTS #7 & 8, RHONE SUBDIV.

30823 WARD 2 120604B HERRING, JOHNNY L. 168 WILLIAMSON RD SAREPTA, LA 71071-0000 OTHER OWNERS: CREEL, SAVANNAH M. TAXES OWED ARE \$46.22 WITH INTEREST & COST TO BE ADDED. 0.62 ACRES - TRACT 187.34 X 168.45 X 48.12 X 74.49 X 103.13 X 127.10 X 329.82 X 28.73 FT. IN SW/4 OF NW/4 SEC. 35-23-11

50050 WARD 2-SH 125821 HICKS, JUDY MAE 102 MACHEN STREET APT 8 SPRINGHILL, LA 71075 TAXES OWED ARE \$359.58 WITH INTEREST & COST TO BE ADDED. LOT #15, BLK. 'C' WHITEWAY SUBDIV. & 5 FT. STRIP ADJ. IN REAR (FORMERLY AN ALLEY)

15835 WARD 1-MN 110562 HILL, MALIK OLAJA- JUAN 205 N FAIRVIEW ST MINDEN, LA 71055-0000 TAXES OWED ARE \$559.83 WITH INTEREST & COST TO BE ADDED. LOT #9, BABB ADDN., UNIT #2

19987 WARD 1-MN 111938 HILL, TOM JR. C/O SHELIA HILL 183 SHREVE DR MINDEN, LA 71058 OTHER OWNERS: EDGERSON, GWEN- DOLYN MANNING MANNING, CHRISTO- PHER JOHN

52634 WARD 1-MN 112154 IRBY, BETTY JEAN HUMPHREY C/O SHARON CAS-SEL 439 MCINTYRE STREET MINDEN, LA 71055 TAXES OWED ARE \$59.33 WITH INTEREST & COST TO BE ADDED. 65 FT. OFF SOUTH SIDE OF LOT #13, BLK. E, MILLER-WATKINS ADDN.

19674 WARD 1-MN 115165 IRBY, CODIE MOR- GAN TRUST, THE C/O SHARON CAS-SEL 439 MCINTYRE MINDEN, LA 71055-0000 TAXES OWED ARE \$118.66 WITH INTEREST & COST TO BE ADDED. LOTS #3 & 4, BLK. 'E', MILLER-WATKINS ADDN., LESS 10 FT. STRIP PREV. SOLD

20715 WARD 1-MN 112157 IRBY, CODIE MOR- GAN TRUST, THE C/O SHARON CAS-SEL 439 MCINTYRE MINDEN, LA 71055-0000

59667 WARD 2-SH 123478 IVORY, WALLACE G. 408 6TH STREET NW SPRINGHILL, LA 71075-0000 OTHER OWNERS: KIMBALL, MARLENE M TAXES OWED ARE \$178.02 WITH INTEREST & COST TO BE ADDED. LOTS #1 & 2 BLK. 'B' ROBINSON SUBDIV. & STRIP 20 X 215 FT. ADJ. (FORMERLY A STREET) IN E/2 OF NW/4 OF NE/4 SEC. 11-23-11

58281 WARD 2-SH 124228 JACK, VESTER C/O DOROTHY SALONE 61 COLUMBIA 243 TAYLOR, AR 71861-0000 TAXES OWED ARE \$13.22 WITH INTEREST & COST TO BE ADDED. LOT 40 X 139 X 40 X 143 FT. IN SE/4 OF SE/4 SEC. 11-23-11

47868 WARD 1 103754 JACKSON, CURLY ETAL C/O SUSIE KEY 1221 NORTH BOIS'D ARC TYLER, TX 75702 OTHER OWNERS: JACKSON, OLA BELLE TAXES OWED ARE \$61.02 WITH INTEREST & COST TO BE ADDED. 2.74 ACRES - 3.24 AC. IN SW/4 OF SW/4 SEC. 36-19-10, LESS .50 AC. SOLD

62055 WARD 2-SH 124177

HOOSIER, ROBIN D C/O HOWARD GLEN ERVEN 405 REYNOLDS ST SPRINGHILL, LA 71075 OTHER OWNERS: ERVEN, HOWARD GLEN TAXES OWED ARE \$497.90 WITH INTEREST & COST TO BE ADDED. LOT #26 BLK. 1, SHADY OAKS SUBDIV.

11418 WARD 1-MN 112076 HOUSTON, JERRY DALE, EST C/O JERRY CAS- TILLO HOUSTON 2607 TIMBER RD BURLESON, TX 76028-0000 TAXES OWED ARE \$582.49 WITH INTEREST & COST TO BE ADDED. LOT #4, BLK. 'A', RESUBDIV. OF COLLEGE ANNEX

57408 WARD 2-CL 122200 HUDSON, JERRY W. 1040 STATE ROUTE 197 BEECH BLUFF, TN 38313-0000 OTHER OWNERS: HUDSON, GEORGIA TAXES OWED ARE \$8.70 WITH INTEREST & COST TO BE ADDED. LOT 7.17 X 41.67 X 45 X 50 X 61.33 FT. IN NE/4 OF SE/4 SEC. 24-23-11

58687 WARD 2-SA 122888 HUTCHINSON, THE- RESA J 236 S WILLOW RD SHONGALOO, LA 71072-0000 OTHER OWNERS: SMITH, AMANDA MICHELLE

52634 WARD 1-MN 112154 IRBY, BETTY JEAN HUMPHREY C/O SHARON CAS-SEL 439 MCINTYRE STREET MINDEN, LA 71055 TAXES OWED ARE \$59.33 WITH INTEREST & COST TO BE ADDED. 65 FT. OFF SOUTH SIDE OF LOT #13, BLK. E, MILLER-WATKINS ADDN.

19674 WARD 1-MN 115165 IRBY, CODIE MOR- GAN TRUST, THE C/O SHARON CAS-SEL 439 MCINTYRE MINDEN, LA 71055-0000 TAXES OWED ARE \$118.66 WITH INTEREST & COST TO BE ADDED. LOTS #3 & 4, BLK. 'E', MILLER-WATKINS ADDN., LESS 10 FT. STRIP PREV. SOLD

20715 WARD 1-MN 112157 IRBY, CODIE MOR- GAN TRUST, THE C/O SHARON CAS-SEL 439 MCINTYRE MINDEN, LA 71055-0000 TAXES OWED ARE \$178.02 WITH INTEREST & COST TO BE ADDED. LOTS #1 & 2 BLK. 'B' ROBINSON SUBDIV. & STRIP 20 X 215 FT. ADJ. (FORMERLY A STREET) IN E/2 OF NW/4 OF NE/4 SEC. 11-23-11

59667 WARD 2-SH 123478 IVORY, WALLACE G. 408 6TH STREET NW SPRINGHILL, LA 71075-0000 OTHER OWNERS: KIMBALL, MARLENE M TAXES OWED ARE \$178.02 WITH INTEREST & COST TO BE ADDED. LOTS #1 & 2 BLK. 'B' ROBINSON SUBDIV. & STRIP 20 X 215 FT. ADJ. (FORMERLY A STREET) IN E/2 OF NW/4 OF NE/4 SEC. 11-23-11

58281 WARD 2-SH 124228 JACK, VESTER C/O DOROTHY SALONE 61 COLUMBIA 243 TAYLOR, AR 71861-0000 TAXES OWED ARE \$13.22 WITH INTEREST & COST TO BE ADDED. LOT 40 X 139 X 40 X 143 FT. IN SE/4 OF SE/4 SEC. 11-23-11

47868 WARD 1 103754 JACKSON, CURLY ETAL C/O SUSIE KEY 1221 NORTH BOIS'D ARC TYLER, TX 75702 OTHER OWNERS: JACKSON, OLA BELLE TAXES OWED ARE \$61.02 WITH INTEREST & COST TO BE ADDED. 2.74 ACRES - 3.24 AC. IN SW/4 OF SW/4 SEC. 36-19-10, LESS .50 AC. SOLD

35077 WARD 2

120110 JACKSON, DAVID MICHAEL 512 RUTLEDGE AVE SHREVEPORT, LA 71106-0000 TAXES OWED ARE \$2783.99 WITH INTEREST & COST TO BE ADDED. 3.16 ACRES - TRACT 600 X 230 FT. IN SW/4 OF NE/4 SEC. 36-23-11

60505 WARD 1-MN 115214 JACKSON, KIMBERLY MIMS 122 COUNTRY LANE MINDEN, LA 71055-0000 TAXES OWED ARE \$23.74 WITH INTEREST & COST TO BE ADDED. LOT #5, BLK. G, WASHINGTON HTS.

57437 WARD 1-DI 108661 JACKSON, LEMORIS TRENT 12 MASON ST MINDEN, LA 71055-0000 TAXES OWED ARE \$159.06 WITH INTEREST & COST TO BE ADDED. LOT #7, BLK. '2', NEW DIXIE HTS. SUBDIV.

41068 WARD 2-CV 121268 JACKSON, MARTIN A P O BOX 220 COTTON VALLEY, LA 71018-0000 OTHER OWNERS: JACKSON, FLOYD, III JACKSON, TRACIE DENEICE THOMPSON, TOSHA JACKSON TAXES OWED ARE \$435.13 WITH INTEREST & COST TO BE ADDED. 2.19 ACRES - TRACT 175 X 75 X 205 X 342 X 380 X 267 FT. IN NW/4 OF SW/4 SEC. 17-21-10, LESS FT. SOLD, & LESS 100 X 175 FT. SOLD

55155 WARD 1-DI 108663 JAM PROPERTIES, L.L.C. 1503 SHREVEPORT RD MINDEN, LA 71055 TAXES OWED ARE \$3012.23 WITH INTEREST & COST TO BE ADDED. LOT 200 X 150 FT. IN SW/4 OF SW/4 SEC. 29-19-9

30759 WARD 1 105233 JEANETTE PEARCE MORGAN, L.P. C/O EDGAR D. MORGAN 6121 FERN AVE SHREVEPORT, LA 71105-0000 TAXES OWED ARE \$819.39 WITH INTEREST & COST TO BE ADDED. 515 ACRES - S/2 OF SEC. 6, S/2 OF NW/4 OF SW/4, SOUTH 15 AC. OF NE/4 OF SW/4, S/2 OF SW/4 & S/2 OF SE/4 SEC. 5-19-10

54217 WARD 2-CL 121731 JENNINGS, PAMALA PO BOX 911 CULLEN, LA 71021-0000 TAXES OWED ARE \$40.44 WITH INTEREST & COST TO BE ADDED. WEST 40 FT. OF LOT #3, RHONE SUBDIV.

53002 WARD 1 108274E JET OILFIELD SER- VICES, LLC OF TEXAS 2640 YOUREE DRIVE SHREVEPORT, LA 71104-0000 TAXES OWED ARE \$16736.75 WITH INTEREST & COST TO BE ADDED. 46.22 ACRES - TOWNSHIP 18 NORTH, RANGE 10 WEST, SEC. 3 - ALL THAT PART OF W/2 OF NW/4 LYING NORTH OF HWY. #80, LESS 5.64 AC. PREV. SOLD TO LA. POWER & LIGHT CO., LESS 3.22 AC. PREV. SOLD TO DEPT. OF HWYS. FOR I-20 R/W, & LESS THAT PORTION LY- ING SOUTH OF SOUTH R/W OF I-20 & NORTH OF HWY. #80 PREV. SOLD (17.52 AC.) TOWNSHIP 19 NORTH, RANGE 10 WEST, SEC. 34 - ALL THAT PART OF SW/4 LYING SOUTH OF SOUTHERLY R/W OF L&A RR (28.70 AC.)

14145 WARD 1 108274F JET OILFIELD SER- VICES, LLC OF TEXAS 2640 YOUREE DRIVE SHREVEPORT, LA 71104-0000 TAXES OWED ARE \$49.92 WITH INTEREST & COST TO BE ADDED. 14.05 ACRES - TRACT 665 X 967.07 X 671.75 X ? FT. IN NE/4 OF NE/4 SEC. 4-18-10

33607 WARD 2-CV 121316 JOHNSON, EVA M. C/O ANDREA HARDY P O BOX 33 COTTON VALLEY, LA 71018 OTHER OWNERS: GREEN, KETRA LATRECE GREEN, MICHAEL RASHAD JOHNSON, BRENDA J. TAXES OWED ARE \$130.86 WITH

INTEREST & COST TO BE ADDED. LOT 40 X 105 FT. IN SW/4 OF NE/4 SEC. 17-21-10 25633 WARD 2 120353 JOHNSON, JOHNNY RAY 709 LAKE RD STONEWALL, LA 71078-0000 OTHER OWNERS: JOHNSON, SANDRA KAYE MEREDITH TAXES OWED ARE \$634.52 WITH INTEREST & COST TO BE ADDED. LOT 249 X 180 X 135 X 190 FT. IN NE/4 OF NE/4 & IN NW/4 OF NE/4 SEC. 31-23-10 39444 WARD 2-CV 121540 JOHNSON, SARAH MALESE 310 CROW STREET COTTON VALLEY, LA 71018-0000 TAXES OWED ARE \$28.51 WITH INTEREST & COST TO BE ADDED. LOTS #25, 26 & 27, BLK. 1, MRS. EMMA CROW ADDN.

51956 WARD 2-CV 121060A JOHNSON, SHON- TEAKO V. 153 NORA AVE COTTON VALLEY, LA 71018-0000 TAXES OWED ARE \$2971.83 WITH INTEREST & COST TO BE ADDED. LOTS #1, 2, 3, 4, 5, 6, 7, 8 & 11, BLK. 'C' HI-WAY TERRACE ADDN.

29072 WARD 2-CL 121979 JONES, EULA G. BOX 787 CULLEN, LA. 71021 TAXES OWED ARE \$103.94 WITH INTEREST & COST TO BE ADDED. LOT 40 X 100 FT. IN NE/4 OF SE/4 SEC. 24-23-11

53071 WARD 2-CV 120970



LOT #4 & W/2 OF LOT #3, BLK. 'B', FROST LUMBER IND., INC. SUBDIV. IN NE/4 OF NE/4 SEC. 11-23-11 & STRIP 10 X 75 FT. ADJ. (FORMERLY AN ALLEY) IN NE/4 OF NE/4 SEC. 11-23-11	3.75 ACRES - UND. 1/32 INT. IN & TO: S/2 OF NW/4 & SW/4 OF NE/4 SEC. 25-22-10	0.89 ACRES - TRACT 104.5 X 315 FT. IN SW/4 OF SE/4 SEC. 12-22-11 & STRIP 20 X 312 FT. ADJ. IN SW/4 OF SE/4 SEC. 12-22-11, & LOTS #7 & 8, LAURA NATIONS SUBDIV. (UNRECORDED) IN NW/4 OF NE/4 SEC. 13-22-11	21907 WARD 1 105616 NELSON OIL & GAS, INC. 5547 GREENWOOD ROAD SHREVEPORT, LA 71109 TAXES OWED ARE \$5834.43 WITH INTEREST & COST TO BE ADDED. 69.31 ACRES - NW/4 OF NW/4, E/2 OF NW/4, W/2 OF NE/4 & ALL THAT PART OF SE/4 OF NE/4 LYING WEST OF MARTIN RD. SEC. 7-18-8, LESS 16 AC. PREV. SOLD, LESS 2 AC. IN NE/4 OF NW/4 SOLD, LESS \$7.26 AC. SOLD, & LESS 75.43 AC. SOLD	52979 WARD 1-MN 110216 PATILLO, MARCUS R. C/O TANISHA ALLEN 36 WATERBURY DR BOSSIER CITY, LA 71111 OTHER OWNERS: PATILLO, TANISHA R. TAXES OWED ARE \$1403.36 WITH INTEREST & COST TO BE ADDED. LOT #6, BLK. 'A', MARION ST. SUBDIV. IN NW/4 OF NW/4 SEC. 34-19-9	TAXES OWED ARE \$2530.63 WITH INTEREST & COST TO BE ADDED. LOT 210 X 250 FT. ON U. S. HWY. #80 OUT OF LOT #2, KILLEN ADDN. IN NW/4 OF SW/4 SEC. 28-19-9	37952 WARD 1-MN 115346 R & D FOSTER, L.L.C. 399 CAREY LN MINDEN, LA 71055-0000 TAXES OWED ARE \$4876.80 WITH INTEREST & COST TO BE ADDED. S/2 OF LOT #4, WAR-SAW ADDN. IN NW/4 OF NE/4 SEC. 27-19-9. LESS N. 60 FT. PREV. SOLD. (180 X 210 FT.)	124240 REED, NORMA JEAN JACOBS 555 FILDEW PONTIAC, MI 48341 OTHER OWNERS: JACOBS, JEMICHAEL R. JACOBS, JOHNNY RAY JACOBS, MARY ANN JACOBS, NATHAN, JR. JOHNSON, KITTY JO STANDOKES, PATRICIA ANN JACOBS WAITES, HELEN JACOBS WILLIAMS, DOROTHY JEAN JACOBS TAXES OWED ARE \$50.40 WITH INTEREST & COST TO BE ADDED. LOT 50 X 100 FT. IN SE/4 OF NE/4 SEC. 14-23-11	49426 WARD 1-MN 109868 ROY, WILLIAM MI-CHAE 326 BRAEBURN GLEN DR MINDEN, LA 71055-0000 TAXES OWED ARE \$190.92 WITH INTEREST & COST TO BE ADDED. LOT #43, NORTH SIDE SUBDIV.	OF NE/4 SEC. 22-21-10 (16.67 AC.), & AN UND. 1/30 INT. IN & TO: E/2 OF NE/4 OF SW/4 & NW/4 OF NE/4 OF SW/4 SEC. 15-21-10 (1 AC.)
49951 WARD 1 106828 LYNN, STEPHANIE RENEE 146 STONEWOOD RD MINDEN, LA 71055-0000 TAXES OWED ARE \$87.17 WITH INTEREST & COST TO BE ADDED. 1 ACRE - TRACT 210 X 210 FT. IN NE/4 OF NE/4 SEC. 21-20-10	20290 WARD 1-MN 113024 MILLENER, FREDDIE 320 PERSHING STREET MINDEN, LA 71055-0000 TAXES OWED ARE \$576.02 WITH INTEREST & COST TO BE ADDED. LOTS #1 & 2, BLK. 'S', ROSADEL SUBDIV. & LOT 25 X 92 FT. ADJ. IN SE/4 OF SW/4 SEC. 27-19-9 (FORMERLY A STREET)	22170 WARD 2-SA 122812 MORGAN, FREDDIE RAY 211 SMITH LOOP SAREPTA, LA 71071 TAXES OWED ARE \$26.26 WITH INTEREST & COST TO BE ADDED. 1.59 ACRES - 1.59 AC. TRACT IN E/2 OF NE/4 OF NW/4 SEC. 13-22-11 & LOT 81 X 88 FT. IN NE/4 OF NW/4 SEC. 13-22-11	18132 WARD 1-MN 113548 NELSON, EDMOND ESTATE C/O ANNIE G. NELSON 816 DURWOOD DR MINDEN, LA 71055-0000 OTHER OWNERS: NELSON, ANNIE G. TAXES OWED ARE \$18.34 WITH INTEREST & COST TO BE ADDED. LOT 11-B, RESUBDIV. OF LOT #11, BLK. 'G' WASHINGTON HTS. SUBDIV. IN NE/4 OF NW/4 SEC. 27-19-9	10567 WARD 2 117551 PEARCE, TERRY JOE 27247 HWY 157 SHONGALOO, LA 71072-0000 OTHER OWNERS: PEARCE, MOLLY HOLLAN TAXES OWED ARE \$228.30 WITH INTEREST & COST TO BE ADDED. 5 ACRES - TRACT 210 X 210 X 210 X 420 X 420 X 630 FT. IN SW/4 OF SE/4 SEC. 19-23-9	47042 WARD 1 107947A RACHEL & COMPANY ESTATE AGENCY, LLC 910 PIERREMONT RD, STE 248 SHREVEPORT, LA 71106-0000 TAXES OWED ARE \$29.81 WITH INTEREST & COST TO BE ADDED. 18.64 ACRES - TRACT 836.2 X 507.6 X 424.5 X 282 X 62.8 X 195.5 X 72.7 X 583 X 689.3 X 337 X 434.9 X 841.7 X 330 X 449.2 FT. IN S/2 OF SE/4 SEC. 33-19-8 & IN N/2 OF NE/4 SEC. 4-18-8, & LESS 23.30 AC. SOLD	57586 WARD 1-SI 115807 RELIABLE ENERGY SOLUTIONS, LLC 103 DUNVEGAN CT LAFAYETTE, LA 70503-0000 TAXES OWED ARE \$2534.45 WITH INTEREST & COST TO BE ADDED. 10 ACRES - TRACT 233.5 X 467 X 934 X 467 X 700.5 FT. IN SW/4 OF NW/4 & IN NW/4 OF SW/4 SEC. 21-18-9	52935 WARD 1-MN 109866 ROY, WILLIAM MI-CHAE 326 BRAEBURN GLEN DR MINDEN, LA 71055-0000 TAXES OWED ARE \$220.05 WITH INTEREST & COST TO BE ADDED. LOT #2, BLK. 'C', RESUBDIV. OF COLLEGE ANNEX & LOT ADJ. IN REAR THE WIDTH OF LOT #2 & RUNNING BACK TO CENTER OF BRANCH	61475 WARD 1-MN 109865 ROY, WILLIAM MI-CHAE 326 BRAEBURN GLEN DR MINDEN, LA 71055-0000 TAXES OWED ARE \$602.99 WITH INTEREST & COST TO BE ADDED. 4235 EAST TEXAS STREET BOSSIER CITY, LA 71111-0000 TAXES OWED ARE \$94.92 WITH INTEREST & COST TO BE ADDED. LOT 55 X 98 FT. IN NE/4 OF SE/4 SEC. 24-23-11	61475 WARD 1-MN 109865 ROY, WILLIAM MI-CHAE 326 BRAEBURN GLEN DR MINDEN, LA 71055-0000 TAXES OWED ARE \$602.99 WITH INTEREST & COST TO BE ADDED. 4235 EAST TEXAS STREET BOSSIER CITY, LA 71111-0000 TAXES OWED ARE \$94.92 WITH INTEREST & COST TO BE ADDED. LOT 55 X 98 FT. IN NE/4 OF SE/4 SEC. 24-23-11
49687 WARD 2-SH 123418 MAKLYN HOLDINGS, LLC 11052 AUGUST WALK SHREVEPORT, LA 71106-0000 TAXES OWED ARE \$1285.57 WITH INTEREST & COST TO BE ADDED. 4.38 ACRES - ALL THAT PART OF NE/4 OF NE/4 OF NW/4 SEC. 10-23-11 LYING SOUTH OF SPRINGHILL-PLAIN DEALING HWY. LOCATED INSIDE CITY LIMITS OF SPRINGHILL	38655 WARD 1-MN 115110 MILLER, ROBERTA LYNN, EST 221 S' ROOSEVELT DR MINDEN, LA 71055-0000 TAXES OWED ARE \$476.80 WITH INTEREST & COST TO BE ADDED. LOT #16, BLK. 'D', OAK RIDGE DR. RESUBDIV. IN NW/4 OF SW/4 SEC. 28-19-9	29105 WARD 2-SA 122919 MORGAN, FREDDY RAY 211 SMITH LOOP SAREPTA, LA 71071-0000 TAXES OWED ARE \$16.98 WITH INTEREST & COST TO BE ADDED. LOT #6, LAURA NATIONS SUBDIV. (UNRECORDED) IN NW/4 OF NE/4 SEC. 13-22-11	48982 WARD 1 105637 NELSON, ROSALIND EILEEN DANIELS, EST. 108 SYRUP MILL RD MINDEN, LA 71055-0000 TAXES OWED ARE \$1189.19 WITH INTEREST & COST TO BE ADDED. 1 ACRE - TRACT 200 X 210 FT. IN SE/4 OF NE/4 SEC. 5-18-10	55770 WARD 1-MN 113792 PENTON, KAMITHIA 1316 FOREST DR MINDEN, LA 71055 OTHER OWNERS: PENTON, AR-LILLIAN SHINE TAXES OWED ARE \$264.30 WITH INTEREST & COST TO BE ADDED. LOTS #6 & 7 KENWOOD ADDN. UNIT #2	55700 WARD 2-SH 123138 RAMIREZ, BRENDA M. GARCIA 8940 E PICTURESQUE DR GREENWOOD, LA 71033-0000 TAXES OWED ARE \$372.80 WITH INTEREST & COST TO BE ADDED. LOT #42, BLK. 4, SOUTHSIDE SUBDIV.	31251 WARD 2-CL 122239 ROBINSON, S. L. EST. C/O ELIJAH ROBINSON 4254 DON TOPIA PLACE LOS ANGELES, CA 90008-4236 TAXES OWED ARE \$15.88 WITH INTEREST & COST TO BE ADDED. LOT 55 X 98 FT. IN NE/4 OF SE/4 SEC. 24-23-11	19356 WARD 1 106557F ROWLAND, JASON BRYAN 1024 FAWN HOLLOW BOSSIER CITY, LA 71111-0000 OTHER OWNERS: ROWLAND, JOHNNY RAY, JR. TAXES OWED ARE \$79.79 WITH INTEREST & COST TO BE ADDED. 30.25 ACRES - TRACT 1,320.36 X 1,365.19 X 550.32 X 637.67 X 769.21 X 739.22 FT. IN NW/4 OF SW/4 SEC. 34-17-9	15021 WARD 2-SH 125110 SALLEY, LAUREL ANNETTE 5212 GREEN ACRES CT METAIRIE, LA 70003 TAXES OWED ARE \$39.68 WITH INTEREST & COST TO BE ADDED. LOT #7, BLK. '12', FROST LUMBER IND. INC. SUBDIV. IN E/2 OF NW/4 SEC. 12-23-11 & STRIP 10 X 95 FT. ADJ. (FORMERLY AN ALLEY), LOT 230 X 311.2 FT. IN SE/4 OF NW/4 SEC. 12-23-11, LESS WEST 40 FT. SOLD, & STRIP 10 X 190 FT. ADJ. (FORMERLY AN ALLEY) IN SE/4 OF NW/4 SEC. 12-23-11	41702 WARD 1 106610A SCROGGS, MATTHEW CHRISTOPHER 313 HODGES ROAD RUSTON, LA 71270-0000 OTHER OWNERS: SCROGGS, CYNDI HIGHTOWER TAXES OWED ARE \$25.44 WITH INTEREST & COST TO BE ADDED. 16.87 ACRES - TRACT 669.21 X 209.71 X 209.71 X 668.12 X 55.45 X 823.62 X 893.35 FT. IN SW/4 OF NW/4 SEC. 21-19-8
10653 WARD 2-SH 124486 MALOS, MICHEL EST 148 ANGELA SPRINGHILL, LA 71075 TAXES OWED ARE \$655.41 WITH INTEREST & COST TO BE ADDED. LOT 193 X 126.59 (DESC. AS 26.59) X 189.30 X 116 FT. IN SE/4 OF NW/4 SEC. 7-23-10	30184 WARD 1-MN 113122 MITCHELLE, COLBERT EST. C/O MITCHELL LENNEAR 263 WASHINGTON RD MINDEN, LA 71055 TAXES OWED ARE \$11.87 WITH INTEREST & COST TO BE ADDED. LOT 50 X 100 FT. OUT OF LOT #7, MARIAH LEARY ESTATE PART. IN SE/4 OF NE/4 SEC. 27-19-9	48515 WARD 1 105235 MORGAN, RONALD JACK 83335 N FACTORY RD FOLSOM, LA 70437-0000 OTHER OWNERS: MORGAN, COURTNEY A TAXES OWED ARE \$80.94 WITH INTEREST & COST TO BE ADDED. 54.12 ACRES - ALL THAT PART OF EAST 690 FT. OF THE S/2 OF NW/4 OF NW/4 SEC. 22-20-10, LYING NORTH OF WEBSTER PARISH ROAD 17 (ASHLEY ROAD) (10.33 AC.), LESS 2 AC. SOLD, & ALL THAT PART OF E/2 OF NW/4 SEC. 22-20-10 LYING NORTH OF WEBSTER PARISH ROAD 17 (ASHLEY ROAD) (45.79 AC.)	20834 WARD 1 103475 OAKETREE APARTMENTS 305 HOMER RD MINDEN, LA 71055 TAXES OWED ARE \$189.26 WITH INTEREST & COST TO BE ADDED. 2.54 ACRES - TRACT 387.66 X 347.98 X 493.29 X 190 X 190 FT. IN W/2 OF SE/4 SEC. 25-19-9 (3.29 AC.) & TRACT 60 X 250 FT. IN S/2 OF SE/4 SEC. 25-19-9 (0.34 AC.), & LOTS #57, 58 & 59, SMITHWOOD SUBDIV., & LESS LOT #58 & PART OF LOT #59 SOLD, & LESS LOT #59 SOLD, & LESS LOT #57 SMITHWOOD SUBDIV	60651 WARD 2 119479 PERIMAN, WILLIAM KIRK 5009 BROADWAY AVE HALTOM CITY, TX 76117-0000 OTHER OWNERS: DAVIS, LISA KAYE TAXES OWED ARE \$28.74 WITH INTEREST & COST TO BE ADDED. 20 ACRES - S/2 OF S/2 OF NW/4 OF SE/4 & S/2 OF S/2 OF NE/4 OF SE/4 SEC. 23-21-10	39812 WARD 1 102204 RANDELL, OKIMO ROCHELLE 1310 YOUNG ST MINDEN, LA 71055-0000 TAXES OWED ARE \$184.58 WITH INTEREST & COST TO BE ADDED. 20 ACRES - NW/4 OF NW/4 SEC. 25-17-9, LESS S/2 SOLD	58577 WARD 2 119869 RASBERRY, JERRY WYNNE, EST 8975 HWY 2 SHONGALOO, LA 71072 OTHER OWNERS: RASBERRY, EARNES-TINE TAXES OWED ARE \$341.72 WITH INTEREST & COST TO BE ADDED. 57.72 ACRES - ALL THAT PART OF W/2 OF SW/4 SEC. 2-22-10 NORTH OF SAREPTA-SHONGALOO RD., CONT. 67 AC., LESS APPROX. 4.02 AC. TO DEPT OF HWYS., LESS ALL THAT PART OF SW/4 OF SW/4 LYING NORTH OF NEW HWY #2 R/W & EAST OF DORCHEAT BAYOU SOLD (5.31 AC.), & 30 X 97 FT. STRIP ADJ. FORMERLY HWY #2 R/ (0.06 AC.) IN SW/4 OF SW/4 SEC. 2-22-11	10005 WARD 1-MN 109869 ROY, WILLIAM MI-CHAE 326 BRAEBURN GLEN DR MINDEN, LA 71055-0000 TAXES OWED ARE \$200.64 WITH INTEREST & COST TO BE ADDED. LOT FRONTING 37.5 FT. ON CONSTABLE ST. X 155 FT. OUT OF LOTS #6, 7 & 8, BLK. 'K', JUSTICE HEIGHTS ADDN.	56992 WARD 2 129451 SALLEY, THOMAS A 1259 CHURCH ST SAREPTA, LA 71071-0000 TAXES OWED ARE \$925.62 WITH INTEREST & COST TO BE ADDED. LOT 70 X 300 FT. OUT OF LOT #2, CULVERHOUSE PARTITION IN NE/4 OF SE/4 SEC. 16-18-9	50199 WARD 1 106747 SEXTON, DANNY MILTON 1821 JACK MARTIN RD MINDEN, LA 71055 OTHER OWNERS: SEXTON, ELIZABETH CHRISTINE CHOATE TAXES OWED ARE \$207.60 WITH INTEREST & COST TO BE ADDED. 2 ACRES - TRACT 730.43 X 119.25 FT. IN S/2 OF SW/4 OF SE/4 SEC. 31-19-8
10488 WARD 1 131088 MCGOWAN, CYNTHIA 3021 RETTA STREET HOUSTON, TX 77026 OTHER OWNERS: MCGOWAN, DAVID TAXES OWED ARE \$98.26 WITH INTEREST & COST TO BE ADDED. 1 ACRE - TRACT 220.96 X 200.55 X 220.96 X 200.95 FT. IN SW/4 OF SW/4 SEC. 12-17-9	44160 WARD 1-MN 113145 MONTGOMERY, DREW YOUNG 308 PLATEAU ST. MINDEN, LA 71055 OTHER OWNERS: STRINGER, CARRIE JAMES MORELAND TAXES OWED ARE \$5.24 WITH INTEREST & COST TO BE ADDED. LOT #15, BLK. '2', HARRELL HTS.	51430 WARD 1 105263 MORRIS, CATHERINE JETER ETAL 500 JOANNES ST BOSSIER CITY, LA 71111 OTHER OWNERS: JETER, SHELIA MORRIS, CHRISTOPHER MORRIS, KIMBERLY MORRIS, WILLIE D. JR. TAXES OWED ARE \$449.90 WITH INTEREST & COST TO BE ADDED. 2.69 ACRES - TRACT 280 X 383.45 X 286.6 X 438.7 FT. IN E/2 OF NW/4 OF NE/4 SEC. 26-18-10	50738 WARD 1 105716 OAKETREE APARTMENTS, A LIMITED PARTNERSHIP P O BOX 1037 MINDEN, LA 71058 TAXES OWED ARE \$151.42 WITH INTEREST & COST TO BE ADDED. 4.59 ACRES - TRACT 493.29 X 361.51 X 634.58 X 371 X 62.09 X 655.27 FT. IN S/2 OF SE/4 SEC. 25-19-9	48936 WARD 1-MN 113852 PHIPPS, TREBY ESTATE C/O WILLIE COLQUITT 3828 WEST 109 TH STREET INGLEWOOD, CA 90303 TAXES OWED ARE \$45.32 WITH INTEREST & COST TO BE ADDED. LOT 45 X 154.7 X 45.7 X 165.5 FT., TOMPKINS ADDN. IN NW/4 OF NW/4 SEC. 21-19-9	39812 WARD 1 102204 RANDELL, OKIMO ROCHELLE 1310 YOUNG ST MINDEN, LA 71055-0000 TAXES OWED ARE \$184.58 WITH INTEREST & COST TO BE ADDED. 20 ACRES - NW/4 OF NW/4 SEC. 25-17-9, LESS S/2 SOLD	58577 WARD 2 119869 RASBERRY, JERRY WYNNE, EST 8975 HWY 2 SHONGALOO, LA 71072 OTHER OWNERS: RASBERRY, EARNES-TINE TAXES OWED ARE \$341.72 WITH INTEREST & COST TO BE ADDED. 57.72 ACRES - ALL THAT PART OF W/2 OF SW/4 SEC. 2-22-10 NORTH OF SAREPTA-SHONGALOO RD., CONT. 67 AC., LESS APPROX. 4.02 AC. TO DEPT OF HWYS., LESS ALL THAT PART OF SW/4 OF SW/4 LYING NORTH OF NEW HWY #2 R/W & EAST OF DORCHEAT BAYOU SOLD (5.31 AC.), & 30 X 97 FT. STRIP ADJ. FORMERLY HWY #2 R/ (0.06 AC.) IN SW/4 OF SW/4 SEC. 2-22-11	10005 WARD 1-MN 109869 ROY, WILLIAM MI-CHAE 326 BRAEBURN GLEN DR MINDEN, LA 71055-0000 TAXES OWED ARE \$200.64 WITH INTEREST & COST TO BE ADDED. LOT FRONTING 37.5 FT. ON CONSTABLE ST. X 155 FT. OUT OF LOTS #6, 7 & 8, BLK. 'K', JUSTICE HEIGHTS ADDN.	56992 WARD 2 129451 SALLEY, THOMAS A 1259 CHURCH ST SAREPTA, LA 71071-0000 TAXES OWED ARE \$925.62 WITH INTEREST & COST TO BE ADDED. LOT 70 X 300 FT. OUT OF LOT #2, CULVERHOUSE PARTITION IN NE/4 OF SE/4 SEC. 16-18-9	50199 WARD 1 106747 SEXTON, DANNY MILTON 1821 JACK MARTIN RD MINDEN, LA 71055 OTHER OWNERS: SEXTON, ELIZABETH CHRISTINE CHOATE TAXES OWED ARE \$207.60 WITH INTEREST & COST TO BE ADDED. 2 ACRES - TRACT 730.43 X 119.25 FT. IN S/2 OF SW/4 OF SE/4 SEC. 31-19-8
13666 WARD 2 117862 MCINNIS, ANGIE GRISHAM 360 FRYE RD SPRINGHILL, LA 71075-0000 TAXES OWED ARE \$143.22 WITH INTEREST & COST TO BE ADDED. LOT 210 X 210 FT. IN SE/4 OF NW/4 SEC. 17-23-10 MH ON PROPERTY ASSESSED TO TERRY AND ANJ MCINNIS (117862A) 360 FRYE RD	10864 WARD 1-SI 116020 MOODY, DOCK PO BOX 570 SIBLEY, LA 71073 OTHER OWNERS: MOODY, VERA MAE BRYANT TAXES OWED ARE \$1089.64 WITH INTEREST & COST TO BE ADDED. LOT 210 X 225 X 160 X 78.54 X 175 FT. IN SE/4 OF SE/4 SEC. 21-18-9	60400 WARD 2 120130C MURPHY, CLINT 10855 HWY 69 NORTH TYLER, TX 75706-0000 TAXES OWED ARE \$8.50 WITH INTEREST & COST TO BE ADDED. 4.57 ACRES - TRACT 703.74 X 282.84 X 704.35 X 282.84 FT. IN NW/4 OF NW/4 SEC. 12-23-10	41725 WARD 1-MN 112936 OSBORNE, TABITHA ADELE BRYAN 192 S. CHURCH STREET HEFLIN, LA 71039-0000 OTHER OWNERS: BRYAN, EDGAR WATERS, IV TAXES OWED ARE \$666.64 WITH INTEREST & COST TO BE ADDED. LOTS #39 & 40, PE-CAN VIEW SUBDIV. IN N/2 OF SW/4 SEC. 15-19-9	13981 WARD 1-MN 113875 PIPPINS, INEZ 1913 RHEEM AVE. RICHMOND, CA 94801 OTHER OWNERS: THOMPSON, NATHANIEL TAXES OWED ARE \$6.46 WITH INTEREST & COST TO BE ADDED. LOT 50 X 100 FT. IN NE COR. OF LOT #7, BLK. 7, NOIRA ADDN.	39812 WARD 1 102204 RANDELL, OKIMO ROCHELLE 1310 YOUNG ST MINDEN, LA 71055-0000 TAXES OWED ARE \$184.58 WITH INTEREST & COST TO BE ADDED. 20 ACRES - NW/4 OF NW/4 SEC. 25-17-9, LESS S/2 SOLD	58577 WARD 2 119869 RASBERRY, JERRY WYNNE, EST 8975 HWY 2 SHONGALOO, LA 71072 OTHER OWNERS: RASBERRY, EARNES-TINE TAXES OWED ARE \$341.72 WITH INTEREST & COST TO BE ADDED. 57.72 ACRES - ALL THAT PART OF W/2 OF SW/4 SEC. 2-22-10 NORTH OF SAREPTA-SHONGALOO RD., CONT. 67 AC., LESS APPROX. 4.02 AC. TO DEPT OF HWYS., LESS ALL THAT PART OF SW/4 OF SW/4 LYING NORTH OF NEW HWY #2 R/W & EAST OF DORCHEAT BAYOU SOLD (5.31 AC.), & 30 X 97 FT. STRIP ADJ. FORMERLY HWY #2 R/ (0.06 AC.) IN SW/4 OF SW/4 SEC. 2-22-11	10005 WARD 1-MN 109869 ROY, WILLIAM MI-CHAE 326 BRAEBURN GLEN DR MINDEN, LA 71055-0000 TAXES OWED ARE \$200.64 WITH INTEREST & COST TO BE ADDED. LOT FRONTING 37.5 FT. ON CONSTABLE ST. X 155 FT. OUT OF LOTS #6, 7 & 8, BLK. 'K', JUSTICE HEIGHTS ADDN.	56992 WARD 2 129451 SALLEY, THOMAS A 1259 CHURCH ST SAREPTA, LA 71071-0000 TAXES OWED ARE \$925.62 WITH INTEREST & COST TO BE ADDED. LOT 70 X 300 FT. OUT OF LOT #2, CULVERHOUSE PARTITION IN NE/4 OF SE/4 SEC. 16-18-9	50199 WARD 1 106747 SEXTON, DANNY MILTON 1821 JACK MARTIN RD MINDEN, LA 71055 OTHER OWNERS: SEXTON, ELIZABETH CHRISTINE CHOATE TAXES OWED ARE \$207.60 WITH INTEREST & COST TO BE ADDED. 2 ACRES - TRACT 730.43 X 119.25 FT. IN S/2 OF SW/4 OF SE/4 SEC. 31-19-8
49923 WARD 2-SH 123339 MCPHEETERS, GWENDOLYN RENEE 114 W 88TH STREET LOS ANGELES, CA 90003-0000 OTHER OWNERS: MILLER, JOSEPH CURTIS, JR MILLER, PHYLLIS MILLER, TASHAY SMITH, NORMA TAXES OWED ARE \$815.35 WITH INTEREST & COST TO BE ADDED. LOT #250, EAST SIDE SUBDIV. #3	56991 WARD 1-MN 110905 MOODY, VERA, EST C/O TAMARA MOODY 268 HARTWELL RD MINDEN, LA 71055-0000 TAXES OWED ARE \$294.50 WITH INTEREST & COST TO BE ADDED. LOTS #9 & 10, BLK. '5', SOUTHSIDE ADDN., LESS THAT PORTION SOLD TO DEPT. OF HWYS.	51466 WARD 2-CL 121813 MOORE FAMILY PROPERTIES, LLC 1000 COUSSONS ROAD DUBBERLY, LA 71024-0000 TAXES OWED ARE \$347.95 WITH INTEREST & COST TO BE ADDED. LOT 105 X 420 FT. IN SE/4 OF SW/4 SEC. 19-23-10	43871 WARD 2-CV 121442 PARISH, TOSHA JACKSON 7772 CRYSTAL VIL-LAGE LN LAS VEGAS, NV 89113 TAXES OWED ARE \$9.79 WITH INTEREST & COST TO BE ADDED. LOT 100 X 175 FT. IN NW/4 OF SW/4 SEC. 17-21-10	30970 WARD 2-SH 124972 PLO NLHE PROPS, LLC 26 REYNOLDS STREET SPRINGHILL, LA 71075-0000 TAXES OWED ARE \$1426.28 WITH INTEREST & COST TO BE ADDED. WEST 50 FT. OF LOTS #15, 16 & 17, BLK. '2', PINE WOODS LUMBER CO. SUB-DIV. IN SW/4 OF NW/4 SEC. 12-23-11	39812 WARD 1 102204 RANDELL, OKIMO ROCHELLE 1310 YOUNG ST MINDEN, LA 71055-0000 TAXES OWED ARE \$184.58 WITH INTEREST & COST TO BE ADDED. 20 ACRES - NW/4 OF NW/4 SEC. 25-17-9, LESS S/2 SOLD	58577 WARD 2 119869 RASBERRY, JERRY WYNNE, EST 8975 HWY 2 SHONGALOO, LA 71072 OTHER OWNERS: RASBERRY, EARNES-TINE TAXES OWED ARE \$341.72 WITH INTEREST & COST TO BE ADDED. 57.72 ACRES - ALL THAT PART OF W/2 OF SW/4 SEC. 2-22-10 NORTH OF SAREPTA-SHONGALOO RD., CONT. 67 AC., LESS APPROX. 4.02 AC. TO DEPT OF HWYS., LESS ALL THAT PART OF SW/4 OF SW/4 LYING NORTH OF NEW HWY #2 R/W & EAST OF DORCHEAT BAYOU SOLD (5.31 AC.), & 30 X 97 FT. STRIP ADJ. FORMERLY HWY #2 R/ (0.06 AC.) IN SW/4 OF SW/4 SEC. 2-22-11	10005 WARD 1-MN 109869 ROY, WILLIAM MI-CHAE 326 BRAEBURN GLEN DR MINDEN, LA 71055-0000 TAXES OWED ARE \$200.64 WITH INTEREST & COST TO BE ADDED. LOT FRONTING 37.5 FT. ON CONSTABLE ST. X 155 FT. OUT OF LOTS #6, 7 & 8, BLK. 'K', JUSTICE HEIGHTS ADDN.	56992 WARD 2 129451 SALLEY, THOMAS A 1259 CHURCH ST SAREPTA, LA 71071-0000 TAXES OWED ARE \$925.62 WITH INTEREST & COST TO BE ADDED. LOT 70 X 300 FT. OUT OF LOT #2, CULVERHOUSE PARTITION IN NE/4 OF SE/4 SEC. 16-18-9	50199 WARD 1 106747 SEXTON, DANNY MILTON 1821 JACK MARTIN RD MINDEN, LA 71055 OTHER OWNERS: SEXTON, ELIZABETH CHRISTINE CHOATE TAXES OWED ARE \$207.60 WITH INTEREST & COST TO BE ADDED. 2 ACRES - TRACT 730.43 X 119.25 FT. IN S/2 OF SW/4 OF SE/4 SEC. 31-19-8
20896 WARD 1 104902 METROPOLITAN MANAGEMENT CORP. P O BOX 5477 BOSSIER CITY, LA 71171 TAXES OWED ARE \$40.56 WITH INTEREST & COST TO BE ADDED. 6.32 ACRES - SW/4 OF NW/4 SEC. 22-18-10, LESS TRACTS PREV. SOLD, LESS 2 AC. SOLD, LESS 1 AC. SOLD, LESS 8.6 AC. SOLD, LESS 1 ACRE SOLD	16576 WARD 1 105225 MORGAN, A. V. EST 135 CROFT RD COUSHATTA, LA 71019 TAXES OWED ARE \$20.75 WITH INTEREST & COST TO BE ADDED. LOT #10, M. A. WILLIS SUBDIV. IN SE/4 OF SE/4 SEC. 6-18-10	60400 WARD 2 120130C MURPHY, CLINT 10855 HWY 69 NORTH TYLER, TX 75706-0000 TAXES OWED ARE \$8.50 WITH INTEREST & COST TO BE ADDED. 4.57 ACRES - TRACT 703.74 X 282.84 X 704.35 X 282.84 FT. IN NW/4 OF NW/4 SEC. 12-23-10	41725 WARD 1-MN 112936 OSBORNE, TABITHA ADELE BRYAN 192 S. CHURCH STREET HEFLIN, LA 71039-0000 OTHER OWNERS: BRYAN, EDGAR WATERS, IV TAXES OWED ARE \$666.64 WITH INTEREST & COST TO BE ADDED. LOTS #39 & 40, PE-CAN VIEW SUBDIV. IN N/2 OF SW/4 SEC. 15-19-9	13981 WARD 1-MN 113875 PIPPINS, INEZ 1913 RHEEM AVE. RICHMOND, CA 94801 OTHER OWNERS: THOMPSON, NATHANIEL TAXES OWED ARE \$6.46 WITH INTEREST & COST TO BE ADDED. LOT 50 X 100 FT. IN NE COR. OF LOT #7, BLK. 7, NOIRA ADDN.	39812 WARD 1 102204 RANDELL, OKIMO ROCHELLE 1310 YOUNG ST MINDEN, LA 71055-0000 TAXES OWED ARE \$184.58 WITH INTEREST & COST TO BE ADDED. 20 ACRES - NW/4 OF NW/4 SEC. 25-17-9, LESS S/2 SOLD	58577 WARD 2 119869 RASBERRY, JERRY WYNNE, EST 8975 HWY 2 SHONGALOO, LA 71072 OTHER OWNERS: RASBERRY, EARNES-TINE TAXES OWED ARE \$341.72 WITH INTEREST & COST TO BE ADDED. 57.72 ACRES - ALL THAT PART OF W/2 OF SW/4 SEC. 2-22-10 NORTH OF SAREPTA-SHONGALOO RD., CONT. 67 AC., LESS APPROX. 4.02 AC. TO DEPT OF HWYS., LESS ALL THAT PART OF SW/4 OF SW/4 LYING NORTH OF NEW HWY #2 R/W & EAST OF DORCHEAT BAYOU SOLD (5.31 AC.), & 30 X 97 FT. STRIP ADJ. FORMERLY HWY #2 R/ (0.06 AC.) IN SW/4 OF SW/4 SEC. 2-22-11	10005 WARD 1-MN 109869 ROY, WILLIAM MI-CHAE 326 BRAEBURN GLEN DR MINDEN, LA 71055-0000 TAXES OWED ARE \$200.64 WITH INTEREST & COST TO BE ADDED. LOT FRONTING 37.5 FT. ON CONSTABLE ST. X 155 FT. OUT OF LOTS #6, 7 & 8, BLK. 'K', JUSTICE HEIGHTS ADDN.	56992 WARD 2 129451 SALLEY, THOMAS A 1259 CHURCH ST SAREPTA, LA 71071-0000 TAXES OWED ARE \$925.62 WITH INTEREST & COST TO BE ADDED. LOT 70 X 300 FT. OUT OF LOT #2, CULVERHOUSE PARTITION IN NE/4 OF SE/4 SEC. 16-18-9	50199 WARD 1 106747 SEXTON, DANNY MILTON 1821 JACK MARTIN RD MINDEN, LA 71055 OTHER OWNERS: SEXTON, ELIZABETH CHRISTINE CHOATE TAXES OWED ARE \$207.60 WITH INTEREST & COST TO BE ADDED. 2 ACRES - TRACT 730.43 X 119.25 FT. IN S/2 OF SW/4 OF SE/4 SEC. 31-19-8
53218 WARD 2 118888 MIDDLETON, JAN 822 SLATTERY BLVD SHREVEPORT, LA 71104-4822 OTHER OWNERS: ADAMS, FREDERICK A. & JOHN W. SHEA, CO-TRUSTEES MIDDLETON, STEPHEN EUGENE TAXES OWED ARE \$10.88 WITH INTEREST & COST TO BE ADDED.	12556 WARD 2 119040 MORGAN, FREDDIE RAY 211 SMITH LOOP SAREPTA, LA 71071 TAXES OWED ARE \$29.44 WITH INTEREST & COST TO BE ADDED. 3.16 ACRES - 3.16 AC. IN W/2 OF NE/4 OF NW/4 SEC. 13-22-11	51466 WARD 2-CL 121813 MOORE FAMILY PROPERTIES, LLC 1000 COUSSONS ROAD DUBBERLY, LA 71024-0000 TAXES OWED ARE \$347.95 WITH INTEREST & COST TO BE ADDED. LOT 105 X 420 FT. IN SE/4 OF SW/4 SEC. 19-23-10	43871 WARD 2-CV 121442 PARISH, TOSHA JACKSON 7772 CRYSTAL VIL-LAGE LN LAS VEGAS, NV 89113 TAXES OWED ARE \$9.79 WITH INTEREST & COST TO BE ADDED. LOT 100 X 175 FT. IN NW/4 OF SW/4 SEC. 17-21-10	30970 WARD 2-SH 124972 PLO NLHE PROPS, LLC 26 REYNOLDS STREET SPRINGHILL, LA 71075-0000 TAXES OWED ARE \$1426.28 WITH INTEREST & COST TO BE ADDED. WEST 50 FT. OF LOTS #15, 16 & 17, BLK. '2', PINE WOODS LUMBER CO. SUB-DIV. IN SW/4 OF NW/4 SEC. 12-23-11	39812 WARD 1 102204 RANDELL, OKIMO ROCHELLE 1310 YOUNG ST MINDEN, LA 71055-0000 TAXES OWED ARE \$184.58 WITH INTEREST & COST TO BE ADDED. 20 ACRES - NW/4 OF NW/4 SEC. 25-17-9, LESS S/2 SOLD	58577 WARD 2 119869 RASBERRY, JERRY WYNNE, EST 8975 HWY 2 SHONGALOO, LA 71072 OTHER OWNERS: RASBERRY, EARNES-TINE TAXES OWED ARE \$341.72 WITH INTEREST & COST TO BE ADDED. 57.72 ACRES - ALL THAT PART OF W/2 OF SW/4 SEC. 2-22-10 NORTH OF SAREPTA-SHONGALOO RD., CONT. 67 AC., LESS APPROX. 4.02 AC. TO DEPT OF HWYS., LESS ALL THAT PART OF SW/4 OF SW/4 LYING NORTH OF NEW HWY #2 R/W & EAST OF DOR			











**Pruitt Home Renovations**  
Your Local One Stop Home Improvement Contractor  
• Licensed and Insured •  
For a **FREE** estimate, just give us a call!  
**Abraham Pruitt** **Teddy Pruitt**  
**(318) 382-3272**  
find us on facebook @pruithomerenovations

**The Community Plumber LLC**  
Lic. Master Plumber 4306  
**(318) 382-3272**  
Pruitt Family Owned Business

**Locally Owned & Operated**  
**SPEER ROOFING & Construction, LLC**  
Serving Minden and surrounding areas since 2004!  
Owner **Daniel Speer**  
Free Estimates  
Phone **(318) 371-0008**

**MITCHELL DIRT & ASPHALT**  
Asphalt & Concrete Paving  
Dirt Work & Hauling  
Demolition  
Contact **Keith**  
377-8594 or 470-0812

**BLJJ ROOFING**  
**LARRY BURRELL - OWNER**  
**639-0090**  
**FREE INSPECTIONS**

**Mobile Powerwash Service**  
"CLEAN YOUR HOME WITH POWER"  
• Houses • Mobile Homes  
• Driveways • Pool Decks, etc.  
**BILLY'S INDUSTRIAL CLEANING**  
\*CREDIT CARDS ACCEPTED\*  
**318-965-9002 OR CELL 318-455-4685**

**THE Tree Guys**  
Licensed & Insured Arborists  
Locally Owned & Operated  
Minden, LA  
Jon Conway & Kevin Crawford  
601 Howell St. • Minden, LA 71055  
**Jon (318) 517-3069**  
**Kevin (318) 780-0765**  
jon.threetreeguys@gmail.com • Like Us on Facebook @threetreeguys18

**DALE'S PAVING INC.**  
ASPHALT & CONCRETE  
**747-3140**  
**WWW.DALESPAVING.COM**  
• Asphalt Paving • Concrete Paving  
• Crack Sealing • Seal Coating  
• Parking Lot Overlay  
Like us on facebook

**"Come Ride With Us"**  
Webster Parish Police Jury  
Office of Community Services  
PUBLIC TRANSPORTATION  
Medical appointments, work, shopping, banking or visiting. From Springhill to Shreveport and all points in between we will get you there with dependable, courteous services.  
For information or to schedule a ride  
318-377-7022 - Minden  
318-539-5696 - Springhill  
Handicap & wheelchair accessible  
Equal opportunity employee/services  
**Monthly Bus Passes Available**

Have you been thinking about  
**DIGITAL MARKETING?**

Let us take the guesswork out of it with:

**DIGITAL ADS**  
**LANDING PAGES**  
**SALES FUNNELS**  
**RETARGETING**

**Minden Press MEDIA**  
mindenpressmedia.com

**Your Ad | Two Newspapers | Two Websites | All Business**

**Minden Press MEDIA**

Scan the QR Code to get started



GARDENING

# PLANTS TO USE DURING THE HEAT OF SUMMER

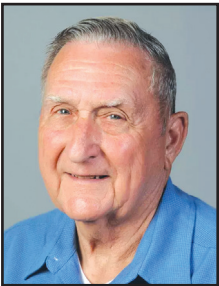
**JOE W. WHITE, PH.D.**  
*Extension Horticulturist, (ret)  
LSU AgCenter  
May 2025*

The kind of weather we've had so far this year has caused several gardeners to delay their planting of some of the plants suited to hot weather although now it appears that there may be somewhat of a return to more normal conditions. However, it's probable that many gardeners went ahead and planted some of their warm season vegetables and flowers anyway and likely some were successful. While that's well and good, do understand that warm season plants get a faster start and begin to thrive sooner when planted in a warm soil accompanied by warm nights and relatively hot days. So now we're in the month of May and condi-

tions for warm season plants have finally arrived. But already it may be a bit late to put out transplants of tomatoes and bell peppers as there is a risk they will not fruit well if temperatures soar before they are old enough to flower. Probably most gardeners will go ahead and plant these two favorites anyway and likely will be able to enjoy some fruits from each before they stop setting fruit. Vegetables that are well-adapted to hot temperatures should be what you are planting now if you have not already taken care of this process. Crops to consider include eggplants, hot peppers, okra, Southern peas, sweet potatoes, watermelons, squash, cantaloupes and sweet corn. Heat-tolerant cultivars of tomatoes will probably work, but the main crop tomatoes will usually be a disappointment. A few crops like Southern

peas and sweet corn should be planted at two-week intervals into late July and early August to give a succession of harvests and prevent a glut of produce all at one time. Unfortunately, late corn is often the target of corn ear worms. So, what flowers should you be planting now? There are several warm season annuals that would be good choices and among them are a few cultivars that are Louisiana Super Plants. Consideration should be given to angelonias, pentas, begonias, cleomes, alternantheras, lantanas, wishbone flowers, coleus and verbenas. All should do well. One flower that I didn't mention is the lisianthus. While not popular, it has especially high heat tolerance along with other desirable qualities. Plant breeders have added other colors to the native light blue flower. Now, it's available in pink, pur-

ple, white, violet-to-blue and yellow. Other improvements include double blossoms on some cultivars that look like a rose and other cultivars that resemble a poppy at maturity. The foliage is usually a gray to gray-green in color. Stem height typically ranges from a foot and a half to two feet, but dwarf forms do exist. While it thrives in hot, dry conditions, it can handle a lot of rain with little or no damage. Another feature that many will like is that it is long lasting as a cut flower.



JOE W. WHITE, Ph.D.



WE'RE YOUR MARKETING SUPERHERO!

**WVPC**

WEBSTER PRINTING COMPANY

WEBSTERPRINTING.NET

**CONNECT MORE,  
STRESS LESS**

WITH CONNECT FIBER INTERNET

- True gig speeds - no data caps or throttling
- Affordable monthly pricing
- Business services available

**SIGN UP TODAY!**

[ConexonConnect.com](https://ConexonConnect.com)

844-542-6663

MAY 1925-2025

## 100 YEARS AGO THIS MONTH: HISTORICAL EVENTS FROM MAY 1925

The month of May has been home to many historical events over the years. Here's a look at some that helped to shape the world in May 1925.

- "Pink's War" comes to an end on May 1. The campaign was a British aerial bombardment against the Mahsud tribe in British India's Punjab Province. The
- zen on May 4. The 64-year-old Naismith, who invented the sport of basketball, was born in Canada but had lived in the U.S. for 35 years before becoming an American citizen.
- Biology teacher John Scopes is arrested in Tennessee on May 5. Scopes is arrested teaching evolution, which was illegal in Tennessee.
- worker Tom Lee saves 32 passengers who had been aboard the steamboat M.E. Norman on May 8. The steamboat capsized and sank on the Mississippi River near Memphis, Tennessee, killing 23 passengers and crew.
- The Brooklyn Bridge reopens to vehicle traffic for the first time in almost three years on May 12. The bridge

# 100 YEARS AGO THIS MONTH

campaign began on March 9.

- King Alexander of Yugoslavia signs a decree to have his brother, Prince George, interned as mentally incompetent on May 2. Prince George remained confined in an asylum for nearly two decades until his release was ordered by German occupying forces during World War II. Perhaps thanks to his internment, Prince George was the lone member of the royal family to avoid being exiled and named an enemy of the state upon conclusion of the war.
- James Naismith becomes a United States citizen.
- see. Scopes's arrest led to one of the most notable trials in American history.
- Two students and a teacher are killed during the Wilno school massacre in Poland on May 6. Two eighth-grade students, one of whom was carrying a hand grenade and a pistol, instigated the massacre by attacking teachers.
- New York Yankees manager Miller Huggins benches Everett Scott on May 6, thus ending the player's record of 1,307 consecutive games played, a streak that began in 1916.
- African American river

was closed in July 1922 due to problems with two suspension cables.

- American Martha Wise is convicted of murder on May 12. Wise poisoned 17 members of her family, killing three. Wise is sentenced to life in prison, where she ultimately died in 1971.
- Editorials in Japanese news media decry American plans to strengthen the naval base at Pearl Harbor on May 15. Some Japanese suggest the decision to strengthen the base is a harbinger of future American aggression towards Japan.
- Casey Stengel plays in his final Major League Baseball game on May 19, ending a 14-year playing career.
- Malcolm Little is born in Omaha, Nebraska, on May 19. Little would grow up and become a central figure in the American civil rights movement, by which time he was known as Malcolm X.
- Visitors from states along the United States and Canada border flock to Ontario on May 21 after legal 4.4 beer goes on sale in the province.
- The crew of the N25 seaplane, part of the Amundsen Polar Expedition led by explorer Roald Amundsen, is forced to touch down on ice on May 22. An accompanying plane, the N24, witnesses the landing and touches down as well. The explorers were attempting to be the first to fly to the North Pole, but spend weeks after touching down trying to chisel a runway out of the ice.
- Chicago mobster Angelo "Bloody Angelo" Genna is shot numerous times during a high-speed car chase on May 26. The North Side Gang is behind the attack, and Genna ultimately dies from his wounds.
- The Los Angeles police announce on May 30 they had foiled a kidnapping plot that targeted Hollywood stars Mary Pickford, Pola Negri and Buster Keaton.
- Peter DePaolo wins the 1925 Indianapolis 500 on May 30. DePaolo becomes the first driver to complete the course in fewer than five hours.

**LOUISIANA STATE MUSEUM**

### Celebrate in Jackson Square

Think outside the ballroom and celebrate surrounded by Louisiana's historical treasures, or revel amid Carnival costumes and festive traditions. Let us help you plan your next soirée at the Cabildo or the Presbytère!

[LouisianaStateMuseum.org/Celebrate](https://LouisianaStateMuseum.org/Celebrate)